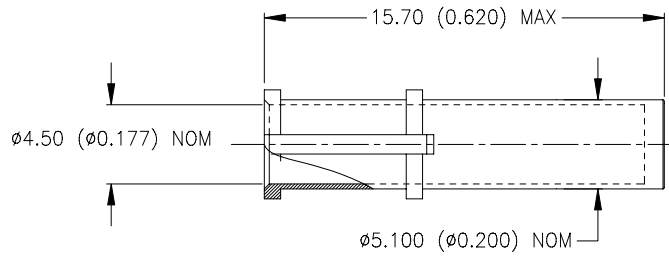


## SPECIFICATION CONTROL DRAWING



### MATERIAL

1. DUMMY PLUG: Beryllium Copper. Plating: see below.

### APPLICATION

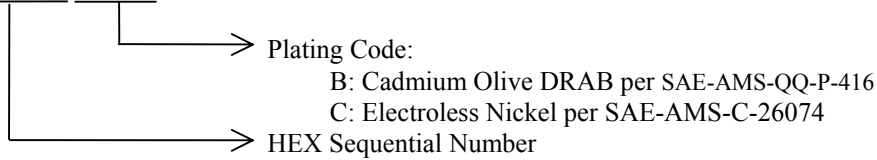
1. A Dummy Plug is designed to replace a HET-A-\*\*\* ferrule where applicable and is purchased separately from the original Hexashield Adaptor assembly.

### INSTALLATION

- The Dummy Plug replaces the HET-A-\*\*\* as shown in the Installation Procedure RPIP-696-04.

### Part Numbering:

HEX07-AB or C



<b>tyco</b> Electronics		Tyco Electronics Corporation 300 Constitution Drive, Menlo Park, CA. 94025, U.S.A.		<b>Raychem</b>		TITLE: <b>DUMMY PLUG FOR HEXASHIELD ADAPTORS</b>	
Unless otherwise specified dimensions are in millimeters. [Inches dimensions are shown in brackets]				DOCUMENT NO.: <b>HEX07-AB/-AC</b>			
TOLERANCES: 0.00 N/A 0.0 N/A 0 N/A		ANGLES: N/A ROUGHNESS IN MICRON		Tyco Electronics reserves the right to amend this drawing at any time. Users should evaluate the suitability of the product for their application.			
DRAWN BY: M. FORONDA		CAGE CODE: 06090		REPLACES: R010433		DCR NUMBER: D030543	
PROD. REV.: A		SCALE: None		SIZE: A		SHEET: 1 of 1	
DOC. ISSUE: 1		DATE: 5-Nov-03					

If this document is printed it becomes uncontrolled. Check the latest revision.

## X-ON Electronics

Largest Supplier of Electrical and Electronic Components

*Click to view similar products for [Conduit Fittings & Accessories](#) category:*

*Click to view products by [TE Connectivity](#) manufacturer:*

Other Similar products are found below :

[M3231GAB](#) [M3231GAC](#) [M3231GAE](#) [M3231GL](#) [M3231GT](#) [VC-937-16/RED](#) [VC-562-16/RED](#) [VC-1125-16/RED](#) [DM0240-1/2A](#) [3408B](#)  
[G6002](#) [M4340GAE](#) [C2016-P](#) [C2012-P](#) [3407B](#) [1660-P](#) [561-87BG11BLK](#) [561-75BG11B](#) [1.533.1201.50](#) [1.533.1601.51](#) [1.533.2001.51](#)  
[BVNV-P428](#) [BVBV-P366](#) [2276](#) [2663-P](#) [3405B](#) [C2070-P](#) [3582V](#) [2643-P](#) [4975](#) [2644-P](#) [2955](#) [M50](#) [2404-P](#) [C2008-P](#) [2723-P](#) [2291](#) [2133-P](#)  
[3048F](#) [VC12516](#) [RC156-0500](#) [DM0523-1/2A](#) [1035A](#) [DMS0250-1A](#) [DMS0313-1A](#) [1040A](#) [1050A](#) [R1/8A](#) [DMPC0490-1/2A](#) [DMPC0521-](#)  
[1/2A](#) [DMPC0552-1/2A](#)