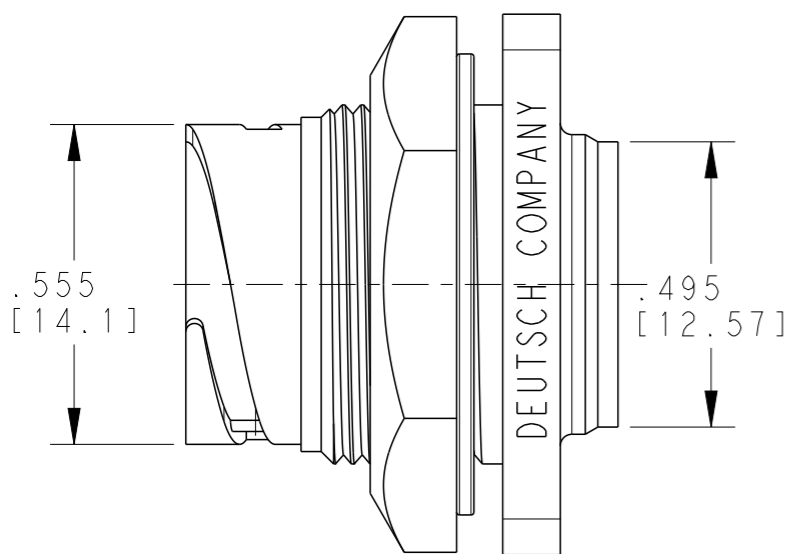


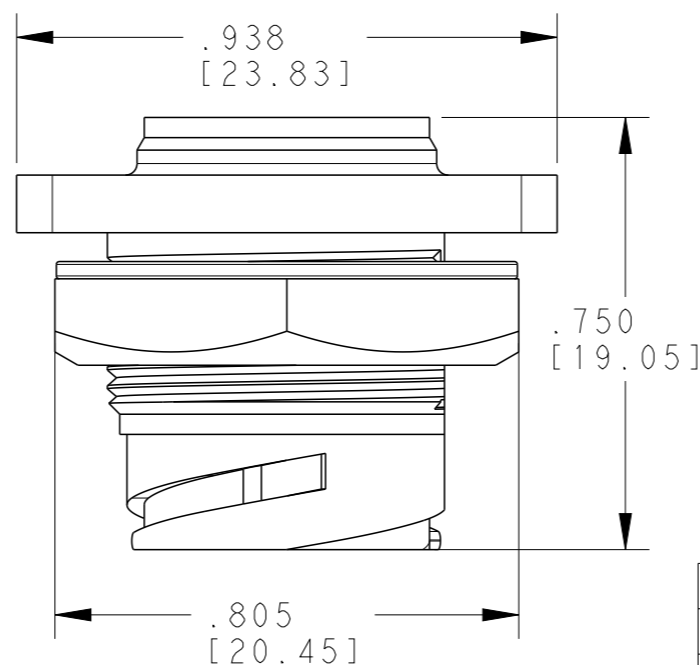
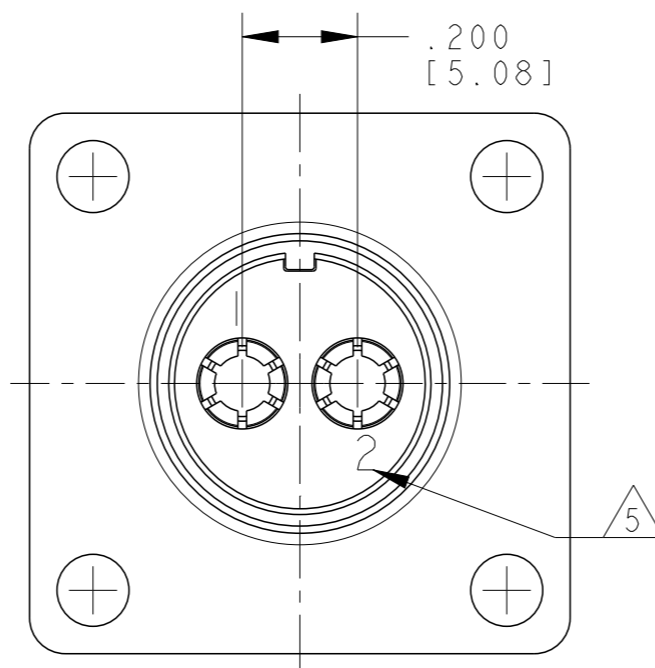
REVISIONS

P	LTR	DESCRIPTION	DATE	DWN	APVD
	A	INITIAL RELEASE	24MAY2017	AP	PV

IMC24-1602X AS SHOWN:



SCALE 3:1

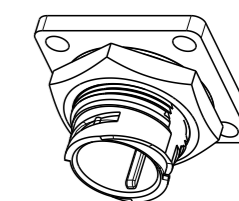


NOTES

1. TE ORDER NUMBER
2. BULK PACKAGING IN CORRUGATED BOX.
3. INSERT ARRANGEMENT SEE PAGE 2.
4. PN SUFFIX "X" = SHIPPED WITH CONTACTS
5. CAVITY NUMBERING
6. SUITABLE COUNTERPART:

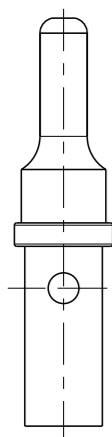
RECEPTACLE (FLANGE)	PLUG
IMC24-1602X	IMC26-1602X
IMC24-2005X	IMC26-2005X
IMC24-2007X	IMC26-2007X
IMC24-2212X	IMC26-2212X

7. ALSO AVAILABLE AS PCB VERSION ON SUITABLE CONTACT (IMC24-2212P-984T) ON REQUEST.



SCALE 1:1

SUITABLE CONTACT:
 6860-201-16278
 SIZE-16, (2X)



CONTACTS SIZE	DESCRIPTION	PART NO
22	IMC 200 SERIES FLANGE RECEPTACLE 12 WAY	IMC24-2212X
20	IMC 200 SERIES FLANGE RECEPTACLE 7 WAY	IMC24-2007X
20	IMC 200 SERIES FLANGE RECEPTACLE 5 WAY	IMC24-2005X
16	IMC 200 SERIES FLANGE RECEPTACLE 2 WAY	IMC24-1602X

THIS DRAWING IS A CONTROLLED DOCUMENT.		DWN AJITH PAI 20MAY2017														
DIMENSIONS: in [mm]		CHK PRAVEENA V 22MAY2017														
TOLERANCES UNLESS OTHERWISE SPECIFIED:		APVD C FINZER 22MAY2017														
<table border="0"> <tr> <td>0 PLC</td> <td>±-</td> </tr> <tr> <td>1 PLC</td> <td>±-</td> </tr> <tr> <td>2 PLC</td> <td>±-</td> </tr> <tr> <td>3 PLC</td> <td>±.025</td> </tr> <tr> <td>4 PLC</td> <td>±-</td> </tr> <tr> <td>ANGLES</td> <td>±1°</td> </tr> </table>		0 PLC	±-	1 PLC	±-	2 PLC	±-	3 PLC	±.025	4 PLC	±-	ANGLES	±1°	PRODUCT SPEC -	NAME IMC 200 SERIES RECEPTACLE FLANGE MOUNTING ASSY	
0 PLC	±-															
1 PLC	±-															
2 PLC	±-															
3 PLC	±.025															
4 PLC	±-															
ANGLES	±1°															
MATERIAL -		FINISH -	APPLICATION SPEC -	SIZE A3	CAGE CODE -	DRAWING NO C-IMC24-XXXXX	RESTRICTED TO -									
CUSTOMER DRAWING			WEIGHT 9.6 g	SCALE 4:1	SHEET 1 OF 3	REV A										

4

3

2

1

THIS DRAWING IS UNPUBLISHED

RELEASED FOR PUBLICATION

2017

© COPYRIGHT 2017

BY TE CONNECTIVITY

ALL RIGHTS RESERVED.

REVISIONS

P	LTR	DESCRIPTION	DATE	DWN	APVD
-	-	SEE SHEET 1	-	-	-

IMC24-2005X

Technical drawing of IMC24-2005X receptacle flange. Side view dimensions: .930 [23.61] (total height), .555 [14.1] (height to contact), .938 [23.83] (height to top of housing), .750 [19.05] (width). Front view dimensions: .216 [5.49] (width between contacts), .063 [1.6] (contact thickness), .126 [3.2] (contact height), .125 [3.18] (contact offset), .938 [23.83] (width).

IMC24-2007X

Technical drawing of IMC24-2007X receptacle flange. Side view dimensions: .930 [23.61] (total height), .555 [14.1] (height to contact), .938 [23.83] (height to top of housing), .750 [19.05] (width). Front view dimensions: .284 [7.2] (width between contacts), .144 [3.66] (contact thickness), .125 [3.17] (contact height), .217 [5.52] (contact offset), .144 [3.66] (contact offset), .025 [0.64] (contact offset), .221 [5.6] (width).

SUITABLE CONTACT:
6860-201-20278
SIZE-20 (5X)

SUITABLE CONTACT:
6860-201-20278
SIZE-20 (7X)

THIS DRAWING IS A CONTROLLED DOCUMENT.

DWN 20MAY2017

AJITH PAI

CHK 22MAY2017

PRAVEENA V

APVD 22MAY2017

C FINZER

PRODUCT SPEC

-

APPLICATION SPEC

-

WEIGHT

9.6 g

CUSTOMER DRAWING

TE Connectivity

NAME
IMC 200 SERIES RECEPTACLE FLANGE
MOUNTING ASSY

SIZE	CAGE CODE	DRAWING NO	RESTRICTED TO
A3	-	IMC24-XXXXX	-

SCALE	SHEET	OF	REV
5:1	2	3	A

DIMENSIONS:
in [mm]

TOLERANCES UNLESS
OTHERWISE SPECIFIED:

0 PLC	±-
1 PLC	±-
2 PLC	±-
3 PLC	±.025
4 PLC	±-
ANGLES	±1°

MATERIAL

-

FINISH

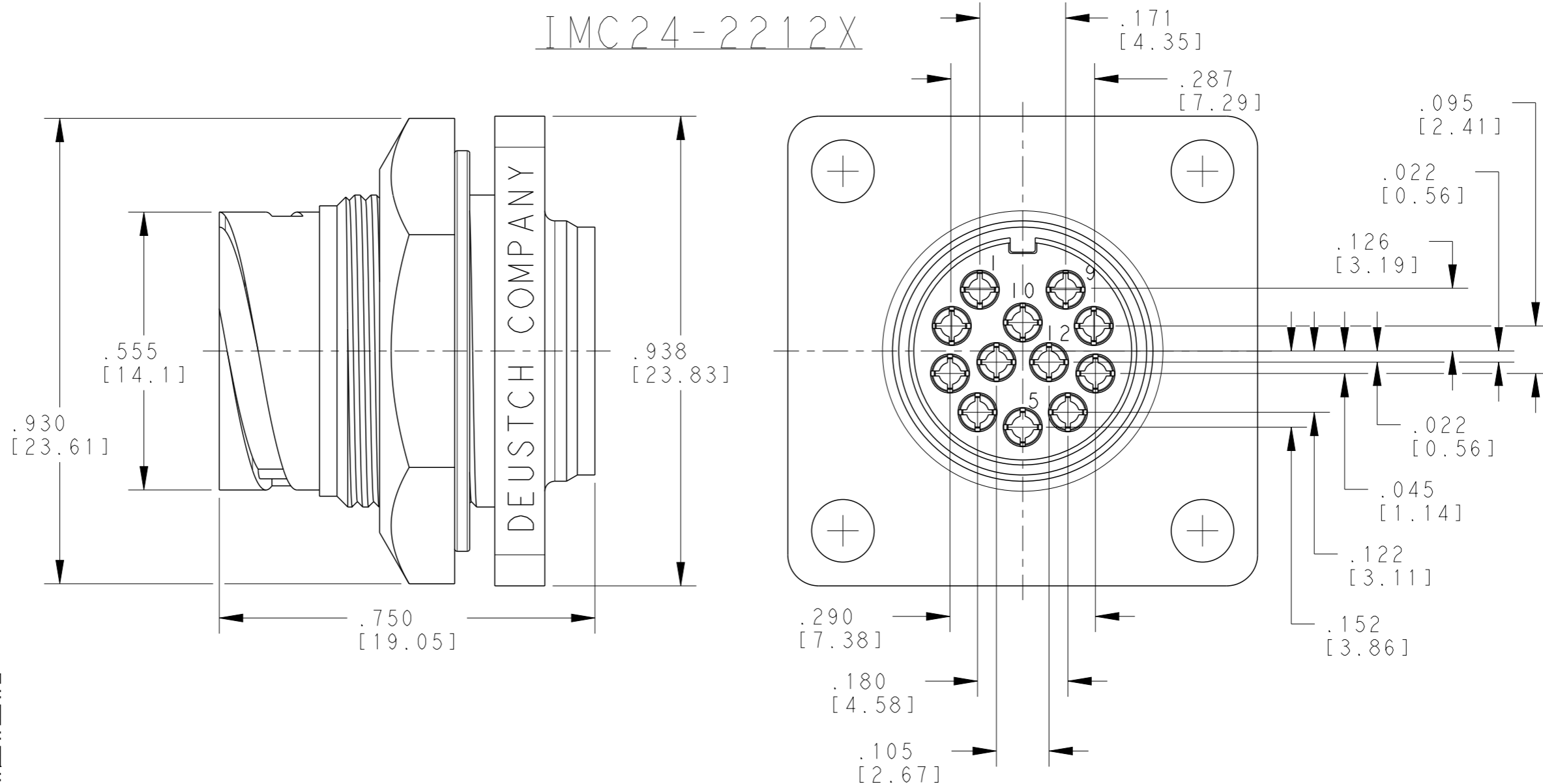
-

1470-19 (3/13)

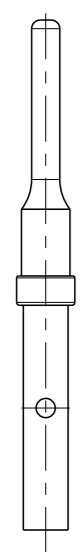
REVISIONS


P	LTR	DESCRIPTION	DATE	DWN	APVD
-		SEE SHEET 1	-	-	-

IMC24-2212X



SUITABLE CONTACT:
 6860-201-22278
 SIZE-22 (12X)



THIS DRAWING IS A CONTROLLED DOCUMENT.		DWN AJITH PAI 20MAY2017	 TE Connectivity	
DIMENSIONS: in [mm]		CHK PRAVEENA V 22MAY2017		
TOLERANCES UNLESS OTHERWISE SPECIFIED:		APVD C FINZER 22MAY2017	NAME IMC 200 SERIES RECEPTACLE FLANGE MOUNTING ASSY	
0 PLC ±- 1 PLC ±- 2 PLC ±- 3 PLC ±.025 4 PLC ±- ANGLES ±1°		PRODUCT SPEC -	RESTRICTED TO -	
MATERIAL -		FINISH -	APPLICATION SPEC -	SCALE 4:1
		WEIGHT 9.6 g	SIZE A3	CAGE CODE -
		CUSTOMER DRAWING	DRAWING NO C-IMC24-XXXXX	SHEET 3 OF 3
				REV A

X-ON Electronics

Largest Supplier of Electrical and Electronic Components

Click to view similar products for [Bench Top Tools](#) category:

Click to view products by [TE Connectivity](#) manufacturer:

Other Similar products are found below :

[6-1372442-6](#) [63801-4462](#) [63801-4561](#) [63801-7269](#) [679527-1](#) [691667-1](#) [7-21000-9](#) [768539-1](#) [854130-1](#) [854946-2](#) [856203-1](#) [904449-1](#) [9-22280-9](#) [986096-2](#) [992438-3](#) [1-21000-3](#) [1-21000-1](#) [1-25022-4](#) [1302263353](#) [1302263355](#) [1302261057](#) [1302261101](#) [1302261206](#) [1302261560](#) [1302263123](#) [1302264036](#) [1424264-1](#) [1424267-1](#) [1428211-1](#) [1428287-1](#) [1-455755-6](#) [1752744-1](#) [18023-9](#) [189763-1](#) [1901726-1](#) [2079747-1](#) [21001-2](#) [2119083-1](#) [2119085-1](#) [2119371-1](#) [2161930-1](#) [2217088-2](#) [2217339-1](#) [2217347-1](#) [22281-9](#) [22374-7](#) [284565-000](#) [F1 Handle Spring](#) [19228-0213](#) [2030790-2](#)