

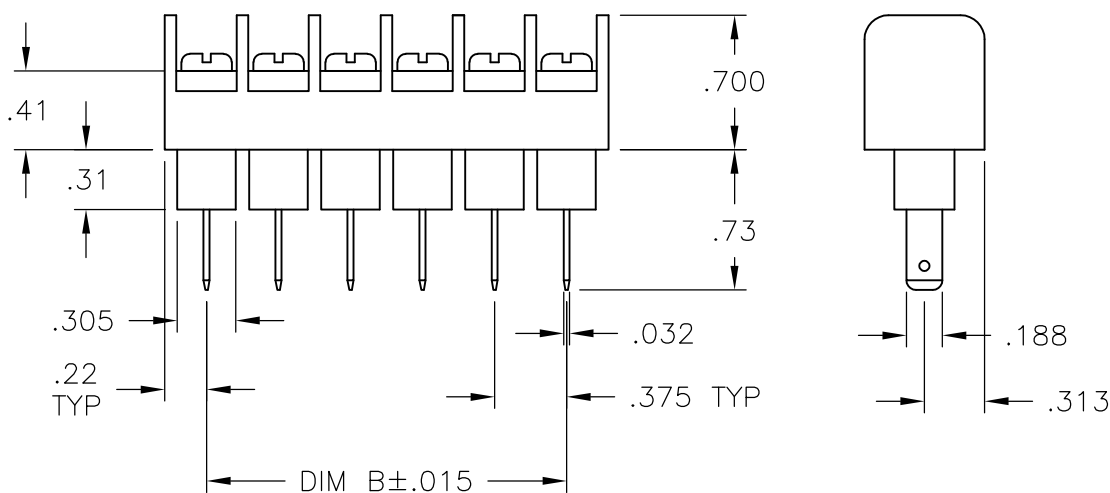
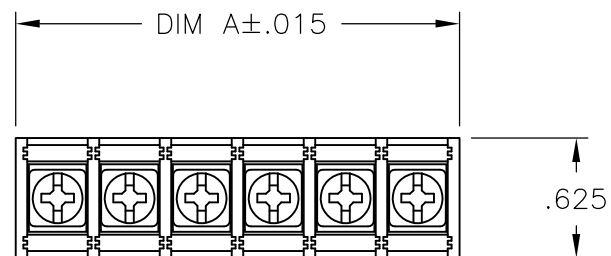
THIS DRAWING IS UNPUBLISHED. RELEASED FOR PUBLICATION  
 © COPYRIGHT BY TYCO ELECTRONICS CORPORATION. ALL INTERNATIONAL RIGHTS RESERVED.

LOC	DIST	REVISIONS					
FT	0	P	LTR	DESCRIPTION	DATE	DWN	APVD
			B	REVISED PER ECO-10-013620	13OCT10	HMR	CR

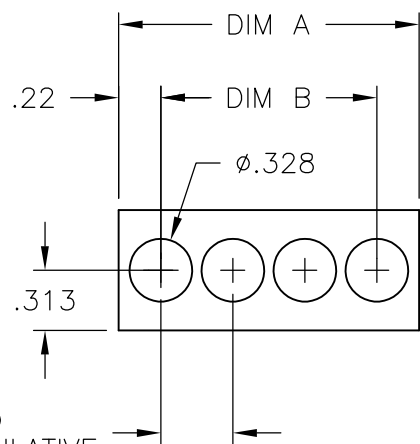
**MATERIALS:**  
 HOUSING: THERMOPLASTIC, UL94V-0, BLACK.  
 TERMINALS: BRIGHT TIN OVER COPPER ALLOY.  
 SCREWS: #6-32 STEEL, ZINC PLATING W/ CLEAR CHROMATE.

**ELECTRICAL:**  
 RATED CURRENT: 20A  
 OPERATING VOLTAGE: 300V  
 WIRE RANGE: 12-22 AWG

**MECHANICAL:**  
 PITCH (TERMINAL SPACING): .375"  
 OPERATING TEMP.: 105°C MAX



DIM B	DIM A	NO OF POS	CATALOG NUMBER	PART NUMBER
9.000	9.436	25	JC6-F407-25	2-1776945-5
8.625	9.061	24	JC6-F407-24	2-1776945-4
8.250	8.686	23	JC6-F407-23	2-1776945-3
7.875	8.311	22	JC6-F407-22	2-1776945-2
7.500	7.936	21	JC6-F407-21	2-1776945-1
7.125	7.561	20	JC6-F407-20	2-1776945-0
6.750	7.186	19	JC6-F407-19	1-1776945-9
6.375	6.811	18	JC6-F407-18	1-1776945-8
6.000	6.436	17	JC6-F407-17	1-1776945-7
5.625	6.061	16	JC6-F407-16	1-1776945-6
5.250	5.686	15	JC6-F407-15	1-1776945-5
4.875	5.311	14	JC6-F407-14	1-1776945-4
4.500	4.936	13	JC6-F407-13	1-1776945-3
4.125	4.561	12	JC6-F407-12	1-1776945-2
3.750	4.186	11	JC6-F407-11	1-1776945-1
3.375	3.811	10	JC6-F407-10	1-1776945-0
3.000	3.436	9	JC6-F407-09	1776945-9
2.625	3.061	8	JC6-F407-08	1776945-8
2.250	2.686	7	JC6-F407-07	1776945-7
1.875	2.311	6	JC6-F407-06	1776945-6
1.500	1.936	5	JC6-F407-05	1776945-5
1.125	1.561	4	JC6-F407-04	1776945-4
.750	1.186	3	JC6-F407-03	1776945-3
.375	.811	2	JC6-F407-02	1776945-2



MOUNTING PANEL LAYOUT

THIS DRAWING IS A CONTROLLED DOCUMENT.		DWN S SCHLEGEL 11/14/06	Tyco Electronics Corporation Harrisburg, PA 17105-3608			
DIMENSIONS: INCHES		CHK S YODER 11/14/06				
TOLERANCES UNLESS OTHERWISE SPECIFIED:		APVD S YODER 11/14/06	NAME			
0 PLC ± - 1 PLC ± - 2 PLC ± .01 3 PLC ± .005 4 PLC ± - ANGLES ± -		PRODUCT SPEC	JC6-F407-XX ASSEMBLY			
MATERIAL		APPLICATION SPEC	SIZE	CAGE CODE	DRAWING NO	RESTRICTED TO
FINISH		WEIGHT	A3	00779	C-1776945	-
CUSTOMER DRAWING			SCALE	SHEET	REV	
			1:1	1 OF 1	B	

## X-ON Electronics

Largest Supplier of Electrical and Electronic Components

*Click to view similar products for [Barrier Terminal Blocks](#) category:*

*Click to view products by [TE Connectivity](#) manufacturer:*

Other Similar products are found below :

[CR151D20104](#) [670A-RZ-15-KT20](#) [6C1N03](#) [6PCR-02](#) [6PCR-02-008](#) [6PCR-05-008](#) [6PCR-08-008](#) [6PCR-09-008](#) [6PCR-13-006](#) [6PCR-15-006](#) [6PCR-21-006](#) [6PCV-06-008](#) [6PCV-06-716](#) [6PCV-09-001](#) [6PCV-10-009](#) [6PCV-15-008](#) [6PCV-17-1206](#) [6PCV-20-323](#) [6PCV-30-006](#) [6STR-06-006](#) [6STR-08-006](#) [6STR-12-008](#) [6STR-13-006](#) [6STR-14-008](#) [6STR-16-008](#) [6STR-17-008](#) [6STR-21-008](#) [6STR-25-008](#) [6STR-27-008](#) [6STV-03-006](#) [6STV-03-008](#) [6STV-04-006](#) [6STV-09-006](#) [6STV-10-006](#) [6WWR-03-693](#) [6WWV-12-008](#) [6WWV-16-008](#) [72212603](#) [72504-C-50](#) [72506-C](#) [72507-C-50](#) [73203](#) [75505-C](#) [75505-C-50](#) [75510-C](#) [77010-50](#) [7C1N08](#) [812-GP-3/4ST-09](#) [8-1437402-5](#) [8-1437402-7](#)