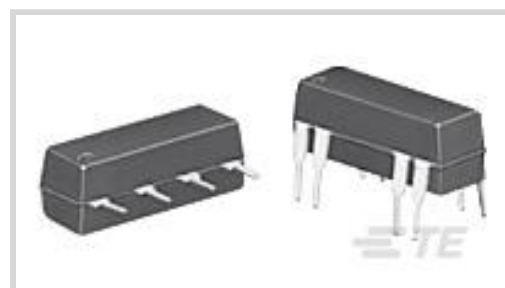




Relays, Contactors & Switches > Relays > Signal Relays



Contact Voltage Rating: **20 VDC**

Signal Relay Coil Power Rating (DC): **262 mW**

Signal Relay Mounting Type: **Printed Circuit Board**

Signal Relay Terminal Type: **PCB-THT**

Signal Relay Coil Voltage Rating: **24 VDC**

Features

Product Type Features

| | |
|--------------|----------------------------|
| Relay Type | JWD/JWS Series Reed Relay |
| Relay Style | JWD/JWS Series Reed Relays |
| Product Type | Relay |

Electrical Characteristics

| | |
|--|--------------------|
| Coil Power Rating Class | 200 – 300 mW |
| Actuating System | DC |
| Insulation Initial Dielectric Between Open Contacts | 250 Vrms |
| Contact Limiting Short-Time Current | .5 A |
| Insulation Initial Dielectric Between Contacts and Coil | 500 Vrms |
| Insulation Initial Dielectric Between Coil/Contact Class | 0 – 500 V |
| Power Consumption | 50 – 288 mW |
| Contact Limiting Making Current | .5 A |
| Coil Resistance | 2200 Ω |
| Contact Limiting Continuous Current | .5 A |
| Coil Type | Monostable |
| Contact Limiting Breaking Current | .5 A |
| Contact Switching Load (Min) | 10mA @ .01V |
| Coil Special Features | UL Coil Insulation |



| | |
|--|----------------|
| Contact Voltage Rating | 20 VDC |
| Signal Relay Coil Power Rating (DC) | 262 mW |
| Signal Relay Coil Voltage Rating | 24 VDC |
| Signal Relay Contact Switching Voltage (Max) | 100 VDC |
| Signal Relay Coil Magnetic System | Monostable, DC |

Body Features

| | |
|--------|-----------------|
| Weight | 2.3 g[.0811 oz] |
|--------|-----------------|

Contact Features

| | |
|-------------------------------------|---------------|
| Contact Plating Material | Ruthenium |
| Contact Current Class | 0 – 2 A |
| Contact Special Features | Reed Contacts |
| Signal Relay Terminal Type | PCB-THT |
| Signal Relay Contact Current Rating | .5 A |
| Signal Relay Contact Arrangement | 1 Form B (NC) |
| Contact Material | Ruthenium |
| Contact Number of Poles | 1 |

Termination Features

| | |
|------------------|--------------|
| Termination Type | Through Hole |
|------------------|--------------|

Mechanical Attachment

| | |
|----------------------------|-----------------------|
| Signal Relay Mounting Type | Printed Circuit Board |
|----------------------------|-----------------------|

Dimensions

| | |
|---------------------------|------------------|
| Width Class (Mechanical) | 6 – 8 mm |
| Width | 7.62 mm[.3 in] |
| Height | 8 mm[.315 in] |
| Length Class (Mechanical) | 16 – 20 mm |
| Length | 19.56 mm[.77 in] |
| Height Class (Mechanical) | 7 – 8 mm |

Usage Conditions

| | |
|---|--------------|
| Environmental Ambient Temperature (Max) | 85 °C[85 °F] |
| Environmental Ambient Temperature Class | 70 – 85°C |
| Operating Temperature Range | -35 – 85 °C |

Operation/Application



| | |
|------------------|----------|
| Performance Type | Standard |
|------------------|----------|

Packaging Features

| | |
|------------------|------------------|
| Packaging Method | Box & Tray, Tray |
|------------------|------------------|

Product Compliance

[For compliance documentation, visit the product page on TE.com>](#)

| | |
|------------------------------|-----------|
| EU RoHS Directive 2011/65/EU | Compliant |
|------------------------------|-----------|

| | |
|-----------------------------|-----------|
| EU ELV Directive 2000/53/EC | Compliant |
|-----------------------------|-----------|

| | |
|---|---|
| China RoHS 2 Directive MIIT Order No 32, 2016 | No Restricted Materials Above Threshold |
|---|---|

| | |
|--|---|
| EU REACH Regulation (EC) No. 1907/2006 | Current ECHA Candidate List: JUL 2021 (219) Candidate List Declared Against: JAN 2021 (211) SVHC > Threshold: Not Yet Reviewed |
|--|---|

| | |
|-----------------|--------------------------------------|
| Halogen Content | Not Yet Reviewed for halogen content |
|-----------------|--------------------------------------|

| | |
|---------------------------|------------------------------|
| Solder Process Capability | Wave solder capable to 265°C |
|---------------------------|------------------------------|

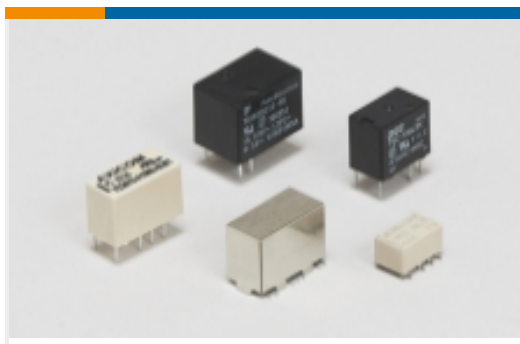
Product Compliance Disclaimer

This information is provided based on reasonable inquiry of our suppliers and represents our current actual knowledge based on the information they provided. This information is subject to change. The part numbers that TE has identified as EU RoHS compliant have a maximum concentration of 0.1% by weight in homogenous materials for lead, hexavalent chromium, mercury, PBB, PBDE, DBP, BBP, DEHP, DIBP, and 0.01% for cadmium, or qualify for an exemption to these limits as defined in the Annexes of Directive 2011/65/EU (RoHS2). Finished electrical and electronic equipment products will be CE marked as required by Directive 2011/65/EU. Components may not be CE marked. Additionally, the part numbers that TE has identified as EU ELV compliant have a maximum concentration of 0.1% by weight in homogenous materials for lead, hexavalent chromium, and mercury, and 0.01% for cadmium, or qualify for an exemption to these limits as defined in the Annexes of Directive 2000/53/EC (ELV). Regarding the REACH Regulation, the information TE provides on SVHC in articles for this part number is based on the latest European Chemicals Agency (ECHA) 'Guidance on requirements for substances in articles' posted at this URL: <https://echa.europa.eu/guidance-documents/guidance-on-reach>

Compatible Parts



Also in the Series | Potter & Brumfield JWD Series



Signal Relays(33)

Customers Also Bought



TE Part #2439450001
RPS-1K-22-18/2.0-9



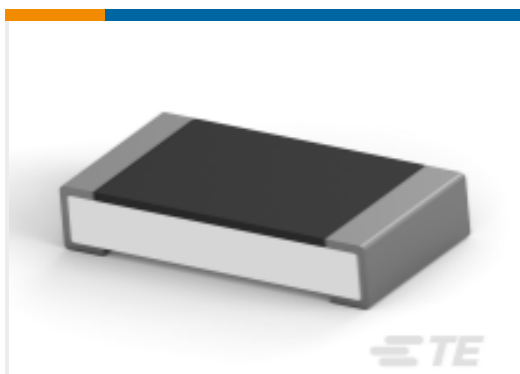
TE Part #6609031-2
1ER3=F7178 S0



TE Part #5745173-1
CABLE CLAMP KIT,SZ 3



TE Part #8-2176414-9
7W STD M/OX 5% 91K



TE Part #3-2176388-8
RQ 1206 24R3 0.1% 10PPM 5K RL



TE Part #202394-2
50 POS. PIN HOOD



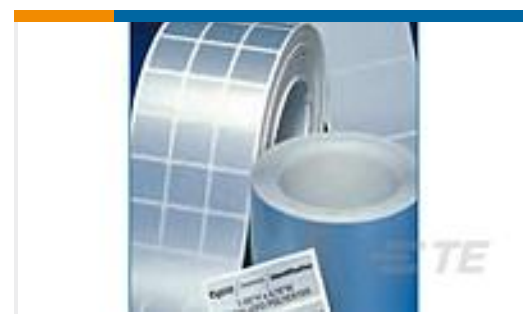
TE Part #5225395-7
BNC PLUG DUAL CRIMP RG174,188



TE Part #2-1437624-0
PKAP70B1/4=KNOB LEX W/POINTER



TE Part #NB18972001
RNF-100-1/4-BU-STK



TE Part #F97088-000
WP-762508-2.5-9

Documents

CAD Files

3D PDF

3D

Customer View Model

[ENG_CVM_CVM_1-1393771-0_99.2d_dxf.zip](#)

English

Customer View Model

[ENG_CVM_CVM_1-1393771-0_99.3d_igs.zip](#)



English

Customer View Model

[ENG_CVM_CVM_1-1393771-0_99.3d_stp.zip](#)

English

By downloading the CAD file I accept and agree to the [Terms and Conditions](#) of use.

Datasheets & Catalog Pages

[JWD/JWS Dual In-Line Package & Single In-Line Package Dry Reed Relays](#)

English

Product Specifications

[Definitions, Handling, Processing, Testing and Use of Relays](#)

English

X-ON Electronics

Largest Supplier of Electrical and Electronic Components

Click to view similar products for [Reed Relays](#) category:

Click to view products by [TE Connectivity](#) manufacturer:

Other Similar products are found below :

[M2C24AH](#) [D1A05HD-3](#) [8000-0211](#) [8000-0217](#) [836C2](#) [922A06C4C](#) [PRMA1A12C](#) [PRMA1A24B](#) [PRMA1A24C](#) [PRMA1B12C](#)
[PRMA1B24C](#) [PRMA1C05F](#) [PRMA2A24C](#) [R1C5DR](#) [R2A5D](#) [1220-0039](#) [RA30521051](#) [RA31232051](#) [HGS1005](#) [HGS1021](#) [HGS1048](#)
[HGS1088](#) [HGS2MT51111F00](#) [HGS2MT51111M00](#) [HGZM1C24](#) [HGZM2C05](#) [HGZM2C48](#) [DA1A24DWD](#) [DA1A-24V](#) [DA1C05FWD](#)
[DA1C12FW](#) [DA2A-6V](#) [134MPCX-3](#) [MRR1ADS8-24D](#) [MRR1ADS8-5D](#) [MRR1ADSK-12D](#) [159-151-T00](#) [MSS62A05](#) [MSS71A05](#)
[MSS71A05B](#) [MSS71A12](#) [MSS71A24](#) [1804-105](#) [191TE1C2M-5S](#) [191TE2A1-5G](#) [191TE2A1-6G](#) [193RE4C3-24G](#) [HYR2001-1520](#)
[195TE1B2E-5S](#) [195TE1B2E-6S](#)