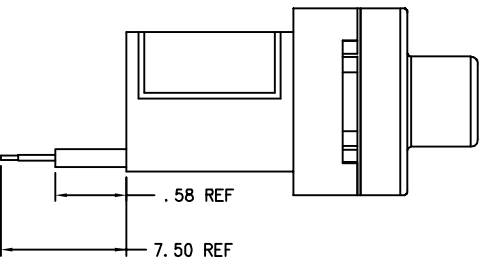
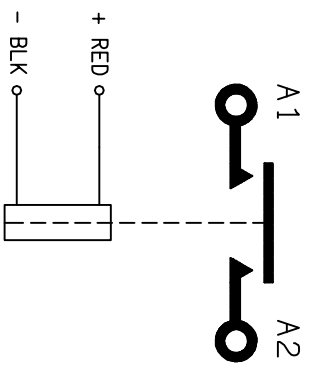
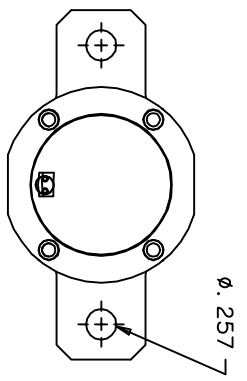
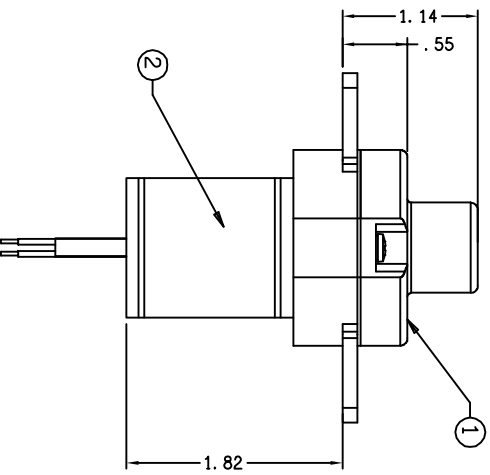
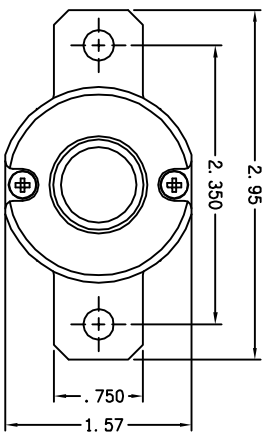


REVISIONS		RELEASED	DATE	APPROVED
S/W	DESCRIPTION			
A	ADDED SHRINK TUBING; MOD. COIL WEIGHT		04/03/12	
B	CHANGED HOLES TO Ø.257; ADDED PLATE-SCHEM.		04/03/22	
C	0531-04 CHANGED DD TO 0.5 - 7.0 VDC; REMOVED SPHERICAL PLATE		04/06/17	
D	0562-04 ADDED REF DIMS .58 & 4.50		04/06/29	EPW
E	0829-04 REMOVED "PRELIMINARY DRAWING"		04/07/28	EPW
F	0903-04 7.50 WAS 4.50		04/12/14	CB
G	08-029031 ADDED COIL CURRENT TO COIL DATA		08/10/08	CB



CONSTRUCTION GASKET SEALED
 MAIN CONTACTS SPST N.O. (DOUBLE BREAK)
 CONFIGURATION 28 VDC
 VOLTAGE 400 AMPS
 CURRENT 4000 AMPS
 RESISTIVE 150 mV MAX @ 400 AMPS
 RUPTURE
 VOLTAGE DROP

COIL DATA CONTINUOUS
 DUTY CYCLE 28 VDC
 NOM. OPERATE VOLTAGE 18 VDC
 MAX. PICKUP VOLTAGE 0.5-7.0 VDC
 DROP/OUT VOLTAGE .55 AMPS @ 32 VDC @ 25° C
 COIL CURRENT

ENVIRONMENTAL DATA
 TEMPERATURE -55 ° C TO 85° C
 ALTITUDE 50,000 FT.
 LIFE ELECTRICAL 50,000 CYCLES
 LIFE MECHANICAL 100,000 CYCLES
 WEIGHT, MAX .61 LBS

QTY	PART OR IDENTIFYING NO	PLATE-NAME	NOMENCLATURE OR DESCRIPTION	CAGE NO	DRAWING OR SPECIFICATION	MATERIAL OR NOTE
2	1	47541-001	PLATE-NAME			
1	1	46095-040	CONTACTOR ASSEMBLY-PRIMARY			

UNLESS OTHERWISE SPECIFIED DIMENSIONS ARE IN INCHES TOLERANCES IN	
F. 06	±.010 ± 1°
DR BY	EPW 04/03/03
CHK BY	CB 04/08/04
ENGR	EPW 04/08/04
MFG	MB 04/08/04
SIZE	CODE IDENT
C	74063
SCALE	NONE SHEET

Tyco Electronics 121 HOT LICKS BLVD., BOX 175 N. DIAMOND STREET, WAINSFIELD, OHIO 44092	
CONTACTOR SPST N.O. DOUBLE BREAK 400 AMP, 28VDC	
DWG NO.	K-400B1F
REF TE P/N 2-1616921-3	

X-ON Electronics

Largest Supplier of Electrical and Electronic Components

Click to view similar products for [Contactors - Electromechanical category:](#)

Click to view products by [TE Connectivity manufacturer:](#)

Other Similar products are found below :

[6-1618400-7](#) [686-117111](#) [686-120111](#) [686-924](#) [686-948](#) [70-901](#) [70-914](#) [MB-3D-6](#) [MC-22A/4-AC120V](#) [8-1616943-9](#) [8-1672124-5](#)
[A40-30-10-84](#) [120-905](#) [A701U](#) [120-904](#) [1393132-9](#) [154-905](#) [154-912](#) [154-913](#) [154-915](#) [154-902](#) [154-910](#) [AVR743D](#) [B6-40-00-84](#) [B7-40-00-84](#) [1616017-5](#) [1616021-1](#) [MVDILM](#) [HP-11D-24](#) [P25-E5019-1](#) [P30C47A12D1-120](#) [P40C47A12D1-120](#) [P40P47D13P1-24-01](#) [CA7-12-10-240](#) [CA7-72-00-24Z](#) [90-162](#) [9-1393132-2](#) [2NC4F0222](#) [A275KXXV2-120VAC](#) [ACC338UMM20](#) [AF80-30-11-13](#) [SZ-B1](#) [CGC-9A-120](#) [3GC2H0M22](#) [3NC0T0A22](#) [3NC1Q0A22](#) [3NC2H0A22](#) [3NC2T0122/SE](#) [3TF3400-0BB4](#) [MC-12B-DC24V](#)