

KUEP Series Panel Plug-in Relay

- 1 Form X, 2 Form A and 2 Form C contact arrangements
- 10 amp current rating
- Magnetic blow-out
- Various mounting options
- Indicator lamp available



Typical applications
DC load switching in industrial controls

Approvals

UL E22575; CSA LR15734; CE (KUEP-11 only)
Technical data of approved types on request

Contact Data

Contact arrangement	1 form X (NO-DM), 2 form A (NO), 2 form C (CO)	
Rated voltage	150VDC	
Rated current	10A	
Contact material	AgCdO	AgSnOInO
Min. recommended contact load	300mA, 12VDC	
Frequency of operation	360 ops./hour	360 ops./hour
Operate/releases time max.	15/10ms	
Bounce time max.	17ms	

Contact ratings

Type	Load	Cycles
UL 508		
KUEP, 1 form X, AgCdO		
	10A, 150VDC	100x10 ³
	1A, 300VDC	100x10 ³
	2.5 A, 170 VDC, resistive	100x10 ³
KUEP, 2 form A, AgCdO		
	5 A, 150 VDC	
	2.5 A, 170 VDC, resistive	100x10 ³
KUEP, 2 form C, AgCdO		
	3 A, 150 VDC	
	2.5 A, 170 VDC, resistive	100x10 ³
	10 A, 240 VAC	
	10 A, 32 VDC	
	5 FLA, 15 LRA, 250 VAC	
	1/3 HP, 120 VAC	
	5 A, 120 VAC, tungsten	
	1/2 HP, 250 VAC	
	10 FLA, 40 LRA, 125 VAC	
	3 A, 600 VAC	
	1/2 HP, 480 VAC	
	1/2 HP, 600 VAC	
	1 HP, 480 VAC, 3 phase	
KUEP, 1 form X, AgSnOInO		
	10A, 150VDC, resistive	30x10 ³
KUEP, 2 form A, AgSnOInO		
	5 A, 150 VDC, resistive	100x10 ³
KUEP, 2 form C, AgSnOInO		
	3 A, 150 VDC, resistive	100x10 ³
Mechanical endurance		10x10 ⁶ ops.

Coil Data

Coil voltage range	5 to 125VDC 6 to 240VAC
Coil insulation system according UL	Class B

Coil versions, DC coil

Coil code	Rated voltage VDC	Operate voltage VDC	Coil resistance Ω±10%	Rated coil power W
One pole versions				
5	5	3.75	21	1.2
6	6	4.5	32	1.125
12	12	9.0	120	1.2
24	24	18.0	472	1.25
48	48	36.0	1800	1.3
110	110	82.5	10000	1.25
125	125	93.75	13000	1.2
Two pole versions				
5	5	3.75	14	1.8
6	6	4.5	20	1.8
12	12	9.0	80	1.8
24	24	18.0	320	1.8
48	48	36.0	1250	1.85
110	110	82.5	6720	1.8
125	125	93.75	8680	1.8

All figures are given for coil without preenergization, at ambient temperature +23°C.

Coil versions, AC coil

Coil code	Rated voltage VAC	Operate voltage VAC	Coil resistance Ω±15%	Rated coil power VA
One pole versions				
6	6	5.1	6	2.0
12	12	10.2	24	2.0
24	24	20.4	85	2.0
120	120	102.0	2250	2.1
240	240	204.0	9110	2.1
Two pole versions				
6	6	5.1	4.2	2.8
12	12	10.2	18	2.8
24	24	20.4	72	2.8
120	120	102.0	1700	2.9
240	240	204.0	7200	2.9

All figures are given for coil without preenergization, at ambient temperature +23°C.

Insulation Data

Initial dielectric strength	
between open contacts	1200V _{rms}
between contact and coil	2200V _{rms}
between adjacent contacts	2200V _{rms}
Initial insulation resistance	
between insulated elements	100MΩ

KUEP Series Panel Plug-in Relay (Continued)

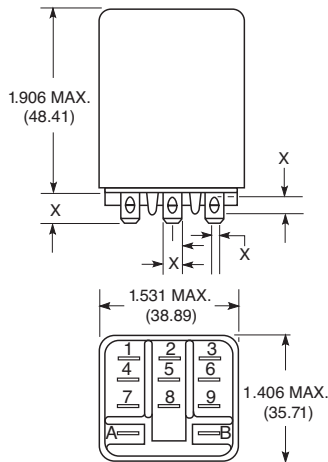
Other Data

Material compliance: EU RoHS/ELV, China RoHS, REACH, Halogen content refer to the Product Compliance Support Center at www.te.com/customersupport/rohssupportcenter

Ambient temperature	
DC coil	-45°C to 70°C
AC coil	1 pole: -45°C to 55°C 2 pole: -45°C to 45°C
Category of environmental protection	
IEC 61810	RT1 - dust protected
Vibration resistance (functional)	.065" double amplitude, 10-55Hz
Shock resistance (functional)	15g, 11ms (non-operating)
Terminal type	
	Quick connects (QC), .187 or .205 PCB-THT
Terminal retention, push force	
QC .205	17 lbs for 3s
QC .187	25 lbs for 3s

Dimensions

Plain case



Other Data (Continued)

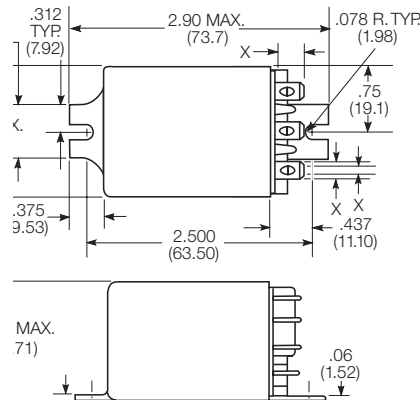
Weight	85g
Packaging/unit	tray/25 pcs., box/150pcs.

Accessories

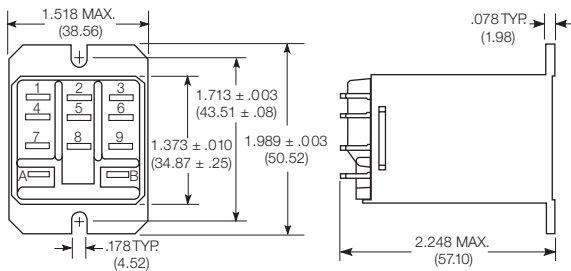
For details see datasheet Sockets and Accessories, KUP Relays

Product Code	Description
27E893	DIN socket (use 20C318 clip)
27E121	Track mount socket (use 20C314 clips)
27E043	Chassis mount/solder eyelet socket (use 20C254 clip)
27E046	Chassis mount/PCB socket (use 20C254 clip)
27E067	Chassis mount/quick connect socket (use 20C254 clip)
27E396	Snap-in/quick connect socket (use 20C254 clip)

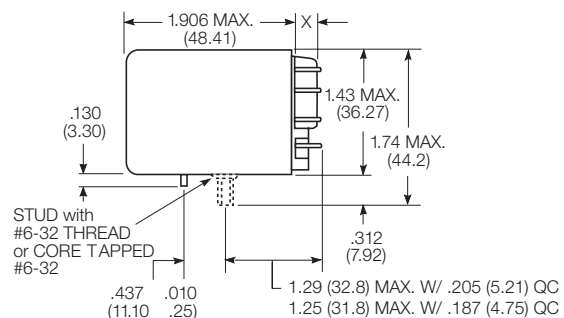
Bracket mount case



Top flange case



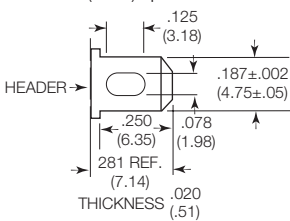
Core / stud mount case



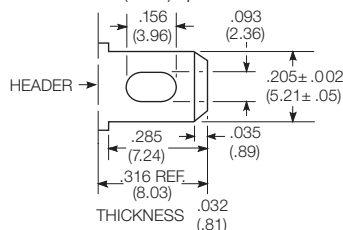
X Is For Terminal Dimensions. See Terminal Drawings.

Terminal dimensions

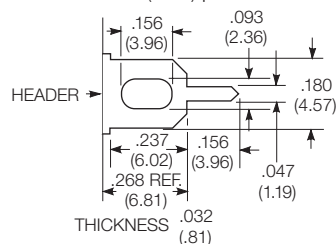
4.75mm (.187) quick connect



5.21mm (.205) quick connect



1.19mm (.047) printed circuit



X-ON Electronics

Largest Supplier of Electrical and Electronic Components

Click to view similar products for [General Purpose Relays](#) category:

Click to view products by [TE Connectivity](#) manufacturer:

Other Similar products are found below :

[PCN-105D3MH,000](#) [59641F200](#) [LY1SAC110120](#) [5X827E](#) [5X837F](#) [5X840F](#) [5X842F](#) [5X848E](#) [LY2N-AC120](#) [LY2S-AC220/240](#) [LY2-US-AC120](#) [LY3-US-AC120](#) [LY4F-UA-DC12](#) [LY4F-UA-DC24](#) [LY4F-US-AC120](#) [LY4F-US-AC240](#) [LY4F-US-DC24](#) [LY4F-VD-AC110](#) [LYQ20DC12](#) [M115C60](#) [M115N010](#) [M115N0150](#) [6031007G](#) [603-12D](#) [61211T0B4](#) [61212T400](#) [61222Q400](#) [61243B600](#) [61243C500](#) [61243Q400](#) [61311BOA2](#) [61311BOA6](#) [61311BOA8](#) [61311C0A2](#) [61311COA1](#) [61311COA6](#) [61311F0A2](#) [61311QOA1](#) [61311QOA4](#) [61311T0D6](#) [61311TOA6](#) [61311TOA7](#) [61311TOB3](#) [61311TOB4](#) [61311U0A6](#) [61312Q600](#) [61312T400](#) [61312T600](#) [61313U200](#) [61313U400](#)