

KUEP Series Panel Plug-in Relay

- 1 Form X, 2 Form A and 2 Form C contact arrangements
- 10 amp current rating
- Magnetic blow-out
- Various mounting options
- Indicator lamp available



Typical applications
DC load switching in industrial controls

Approvals

UL E22575; CSA LR15734; CE (KUEP-11 only)
Technical data of approved types on request

Contact Data

| | | |
|-------------------------------|--|---------------|
| Contact arrangement | 1 form X (NO-DM), 2 form A (NO), 2 form C (CO) | |
| Rated voltage | 150VDC | |
| Rated current | 10A | |
| Contact material | AgCdO | AgSnOInO |
| Min. recommended contact load | 300mA, 12VDC | |
| Frequency of operation | 360 ops./hour | 360 ops./hour |
| Operate/releases time max. | 15/10ms | |
| Bounce time max. | 17ms | |

Contact ratings

| Type | Load | Cycles |
|--------------------------|---------------------------|-------------------------|
| UL 508 | | |
| KUEP, 1 form X, AgCdO | 10A, 150VDC | 100x10 ³ |
| | 1A, 300VDC | 100x10 ³ |
| | 2.5 A, 170 VDC, resistive | 100x10 ³ |
| | KUEP, 2 form A, AgCdO | |
| KUEP, 2 form A, AgCdO | 5 A, 150 VDC | |
| | 2.5 A, 170 VDC, resistive | 100x10 ³ |
| KUEP, 2 form C, AgCdO | 3 A, 150 VDC | |
| | 2.5 A, 170 VDC, resistive | 100x10 ³ |
| | 10 A, 240 VAC | |
| | 10 A, 32 VDC | |
| | 5 FLA, 15 LRA, 250 VAC | |
| | 1/3 HP, 120 VAC | |
| | 5 A, 120 VAC, tungsten | |
| | 1/2 HP, 250 VAC | |
| | 10 FLA, 40 LRA, 125 VAC | |
| | 3 A, 600 VAC | |
| | 1/2 HP, 480 VAC | |
| 1/2 HP, 600 VAC | | |
| 1 HP, 480 VAC, 3 phase | | |
| KUEP, 1 form X, AgSnOInO | 10A, 150VDC, resistive | 30x10 ³ |
| | KUEP, 2 form A, AgSnOInO | |
| KUEP, 2 form A, AgSnOInO | 5 A, 150 VDC, resistive | 100x10 ³ |
| | KUEP, 2 form C, AgSnOInO | |
| KUEP, 2 form C, AgSnOInO | 3 A, 150 VDC, resistive | 100x10 ³ |
| | Mechanical endurance | 10x10 ⁶ ops. |

Coil Data

| | |
|-------------------------------------|----------------------------|
| Coil voltage range | 5 to 125VDC 6 to 240VAC |
| Coil insulation system according UL | Class B |

Coil versions, DC coil

| Coil code | Rated voltage VDC | Operate voltage VDC | Coil resistance $\Omega \pm 10\%$ | Rated coil power W |
|-------------------|-------------------|---------------------|-----------------------------------|--------------------|
| One pole versions | | | | |
| 5 | 5 | 3.75 | 21 | 1.2 |
| 6 | 6 | 4.5 | 32 | 1.125 |
| 12 | 12 | 9.0 | 120 | 1.2 |
| 24 | 24 | 18.0 | 472 | 1.25 |
| 48 | 48 | 36.0 | 1800 | 1.3 |
| 110 | 110 | 82.5 | 10000 | 1.25 |
| 125 | 125 | 93.75 | 13000 | 1.2 |
| Two pole versions | | | | |
| 5 | 5 | 3.75 | 14 | 1.8 |
| 6 | 6 | 4.5 | 20 | 1.8 |
| 12 | 12 | 9.0 | 80 | 1.8 |
| 24 | 24 | 18.0 | 320 | 1.8 |
| 48 | 48 | 36.0 | 1250 | 1.85 |
| 110 | 110 | 82.5 | 6720 | 1.8 |
| 125 | 125 | 93.75 | 8680 | 1.8 |

All figures are given for coil without preenergization, at ambient temperature +23°C.

Coil versions, AC coil

| Coil code | Rated voltage VAC | Operate voltage VAC | Coil resistance $\Omega \pm 15\%$ | Rated coil power VA |
|-------------------|-------------------|---------------------|-----------------------------------|---------------------|
| One pole versions | | | | |
| 6 | 6 | 5.1 | 6 | 2.0 |
| 12 | 12 | 10.2 | 24 | 2.0 |
| 24 | 24 | 20.4 | 85 | 2.0 |
| 120 | 120 | 102.0 | 2250 | 2.1 |
| 240 | 240 | 204.0 | 9110 | 2.1 |
| Two pole versions | | | | |
| 6 | 6 | 5.1 | 4.2 | 2.8 |
| 12 | 12 | 10.2 | 18 | 2.8 |
| 24 | 24 | 20.4 | 72 | 2.8 |
| 120 | 120 | 102.0 | 1700 | 2.9 |
| 240 | 240 | 204.0 | 7200 | 2.9 |

All figures are given for coil without preenergization, at ambient temperature +23°C.

Insulation Data

| | |
|-------------------------------|----------------------|
| Initial dielectric strength | |
| between open contacts | 1200V _{rms} |
| between contact and coil | 2200V _{rms} |
| between adjacent contacts | 2200V _{rms} |
| Initial insulation resistance | |
| between insulated elements | 100M Ω |

KUEP Series Panel Plug-in Relay (Continued)

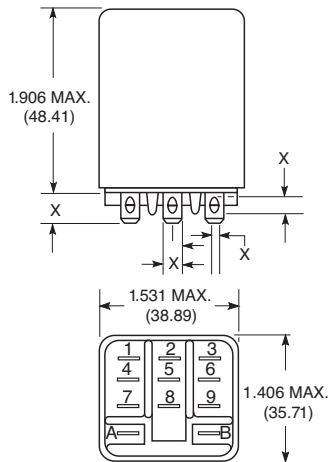
Other Data

Material compliance: EU RoHS/ELV, China RoHS, REACH, Halogen content refer to the Product Compliance Support Center at www.te.com/customersupport/rohssupportcenter

| | |
|--------------------------------------|--|
| Ambient temperature | |
| DC coil | -45°C to 70°C |
| AC coil | 1 pole: -45°C to 55°C 2 pole: -45°C to 45°C |
| Category of environmental protection | |
| IEC 61810 | RT1 - dust protected |
| Vibration resistance (functional) | .065" double amplitude, 10-55Hz |
| Shock resistance (functional) | 15g, 11ms (non-operating) |
| Terminal type | |
| | Quick connects (QC), .187 or .205 PCB-THT |
| Terminal retention, push force | |
| QC .205 | 17 lbs for 3s |
| QC .187 | 25 lbs for 3s |

Dimensions

Plain case



Other Data (Continued)

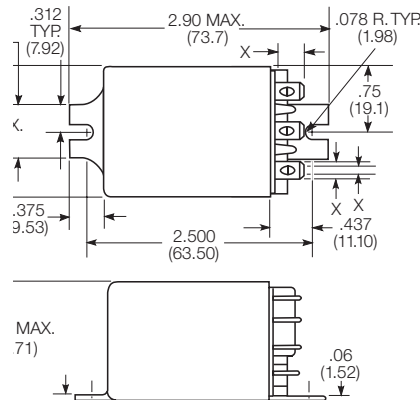
| | |
|----------------|---------------------------|
| Weight | 85g |
| Packaging/unit | tray/25 pcs., box/150pcs. |

Accessories

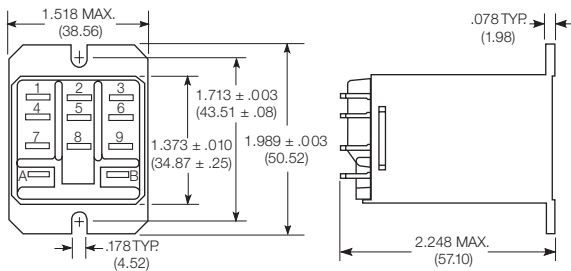
For details see datasheet Sockets and Accessories, KUP Relays

| Product Code | Description |
|--------------|--|
| 27E893 | DIN socket (use 20C318 clip) |
| 27E121 | Track mount socket (use 20C314 clips) |
| 27E043 | Chassis mount/solder eyelet socket (use 20C254 clip) |
| 27E046 | Chassis mount/PCB socket (use 20C254 clip) |
| 27E067 | Chassis mount/quick connect socket (use 20C254 clip) |
| 27E396 | Snap-in/quick connect socket (use 20C254 clip) |

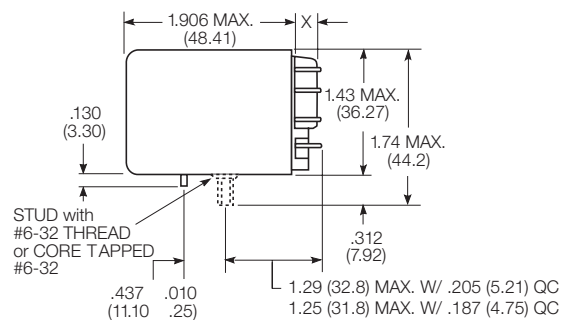
Bracket mount case



Top flange case



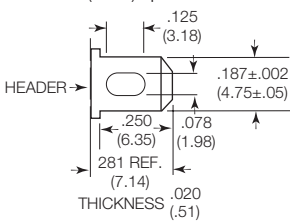
Core / stud mount case



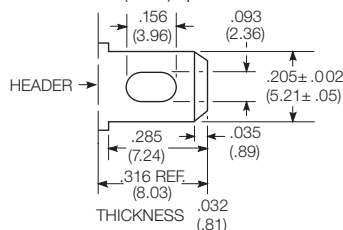
X Is For Terminal Dimensions. See Terminal Drawings.

Terminal dimensions

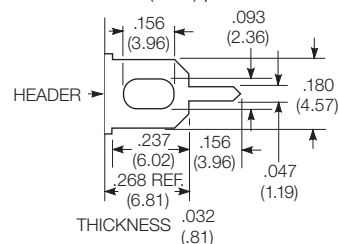
4.75mm (.187) quick connect



5.21mm (.205) quick connect



1.19mm (.047) printed circuit

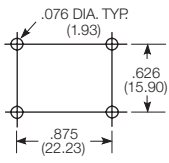


KUEP Series Panel Plug-in Relay (Continued)

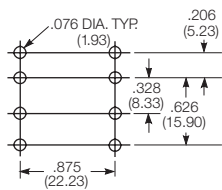
PCB layout

Bottom view on solder pins

1 form X version



2 form C version shown
(Omit unnecessary holes for form A types)

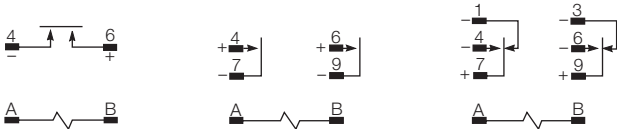


Terminal assignment

1 Form X

2 Form A

2 Form C



Load polarity noted above is recommended for optimum arc suppression.

Product code structure

Typical product code **KUEP -3 A 1 5 -120**

| | |
|---|---|
| Type KUEP Enclosed relay with magnetic blow-outs | |
| Contact arrangement and rating | |
| 3 1 form X (1 NO-DM) | 7 2 form A (2 NO) |
| 11 2 form C (2 CO) | |
| Coil Input | |
| A AC, 50/60Hz | D DC |
| Mounting and options | |
| 1 Socket mount (plain) case | 3 Socket mount (plain) case, with indicator lamp ¹⁾ |
| 5 Bracket mount case | A Plain case with #6-32 stud and locating tab |
| E Plain case with #6-32 tapped core and locating tab | T Top flange case |
| ¹⁾ Indicator lamps are available on models with the following coils: 6-24VAC and VDC, 110VDC and 120-240VAC. Only models with 120-240VAC coils are UL recognized. | |
| Terminal and contact material | |
| 5 4.75mm (.187in) quick connect/solder; AgCdO | 6 5.21mm (.205in) quick connect/solder; AgCdO |
| 7 1.19mm (.047in) PCB, AgCdO | P 4.75mm (.187in) quick connect/solder; AgSnInO |
| R 5.21mm (.205in) quick connect/solder; AgSnInO | S 1.19mm (.047in) PCB, AgSnInO |
| Coil voltage | |
| Coil code: please refer to coil versions table | |

| Product Code | Arrangement | Material | Coil | Terminals | Mounting | Part Number |
|----------------|-------------------|----------|---------|--------------------|--|-------------|
| KUEP-3A15-120 | 1 Form X, 1 NO-DM | AgCdO | 120 VAC | 4.75mm (.187in) QC | Socket mount, plain case | 9-1393113-4 |
| KUEP-3D15-12 | | | 12 VDC | | | 9-1393113-8 |
| KUEP-3D15-24 | | | 24 VDC | | | 1393114-1 |
| KUEP-3D15-48 | | | 48 VDC | | | 1393114-2 |
| KUEP-3D15-110 | | | 110 VDC | | | 9-1393113-7 |
| KUEP-3D35-24 | | | 24 VDC | | Socket mount, plain case w/ indicator lamp | 1393114-5 |
| KUEP-7D15-24 | 2 Form A, 2 NO | | | | Socket mount, plain case | 1-1393114-1 |
| KUEP-11A15-120 | 2 Form C, 2 CO | | 120 VAC | | | 8-1393113-3 |
| KUEP-11D15-12 | | | 12 VDC | | | 8-1393113-6 |
| KUEP-11D15-24 | | | 24 VDC | | | 8-1393113-7 |
| KUEP-11D15-48 | | | 48 VDC | | | 8-1393113-8 |
| KUEP-11D15-110 | | | 110 VDC | | | 8-1393113-5 |

X-ON Electronics

Largest Supplier of Electrical and Electronic Components

Click to view similar products for [General Purpose Relays](#) category:

Click to view products by [TE Connectivity](#) manufacturer:

Other Similar products are found below :

[PCN-105D3MH,000](#) [59641F200](#) [LY1SAC110120](#) [5X827E](#) [5X837F](#) [5X840F](#) [5X842F](#) [5X848E](#) [LY2N-AC120](#) [LY2S-AC220/240](#) [LY2-US-AC120](#) [LY3-US-AC120](#) [LY4F-UA-DC12](#) [LY4F-UA-DC24](#) [LY4F-US-AC120](#) [LY4F-US-AC240](#) [LY4F-US-DC24](#) [LY4F-VD-AC110](#) [LYQ20DC12](#) [M115C60](#) [M115N010](#) [M115N0150](#) [6031007G](#) [603-12D](#) [61211T0B4](#) [61212T400](#) [61222Q400](#) [61243B600](#) [61243C500](#) [61243Q400](#) [61311BOA2](#) [61311BOA6](#) [61311BOA8](#) [61311C0A2](#) [61311COA1](#) [61311COA6](#) [61311F0A2](#) [61311QOA1](#) [61311QOA4](#) [61311T0D6](#) [61311TOA6](#) [61311TOA7](#) [61311TOB3](#) [61311TOB4](#) [61311U0A6](#) [61312Q600](#) [61312T400](#) [61312T600](#) [61313U200](#) [61313U400](#)