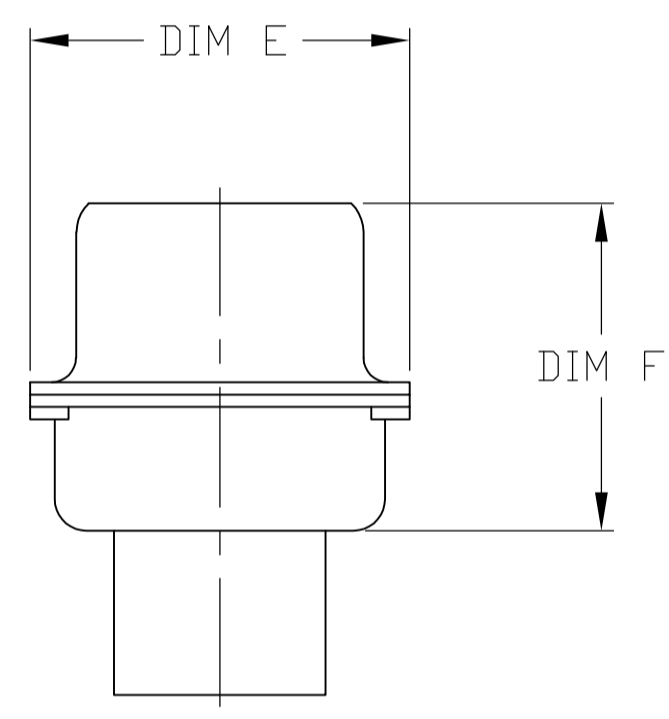
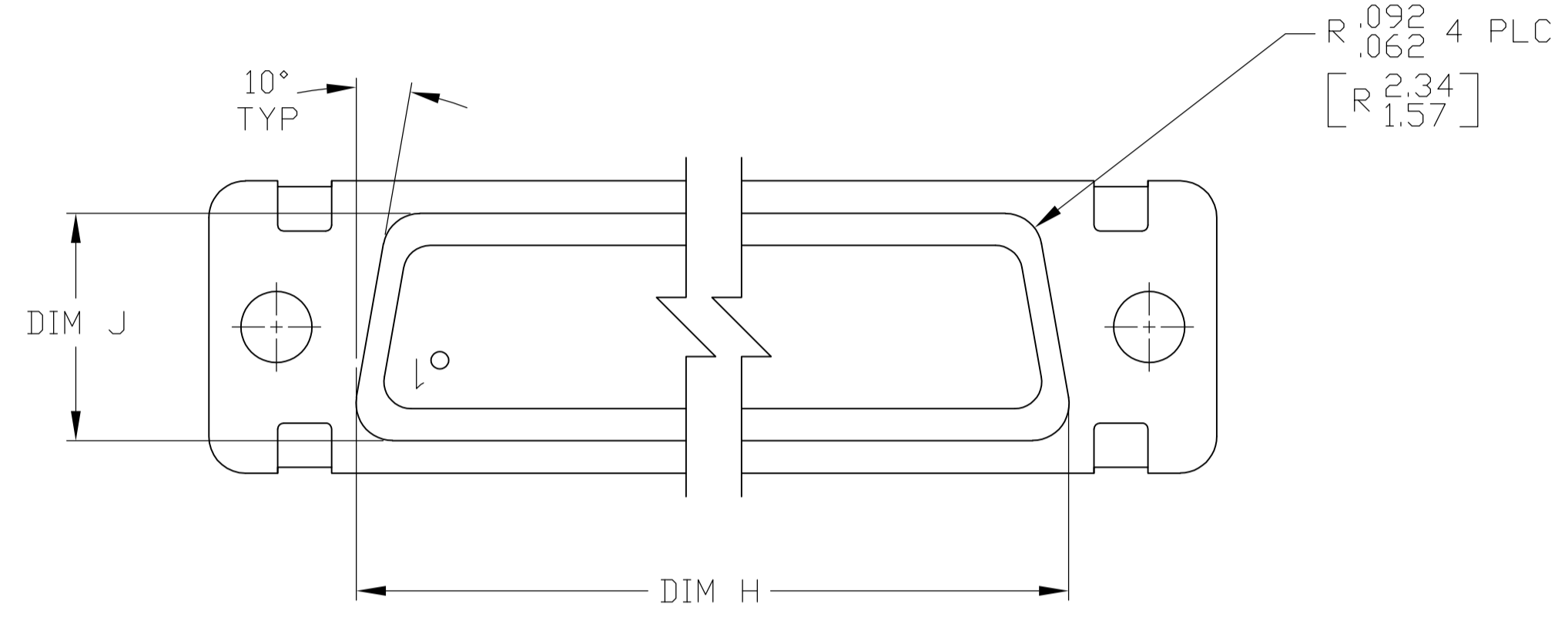
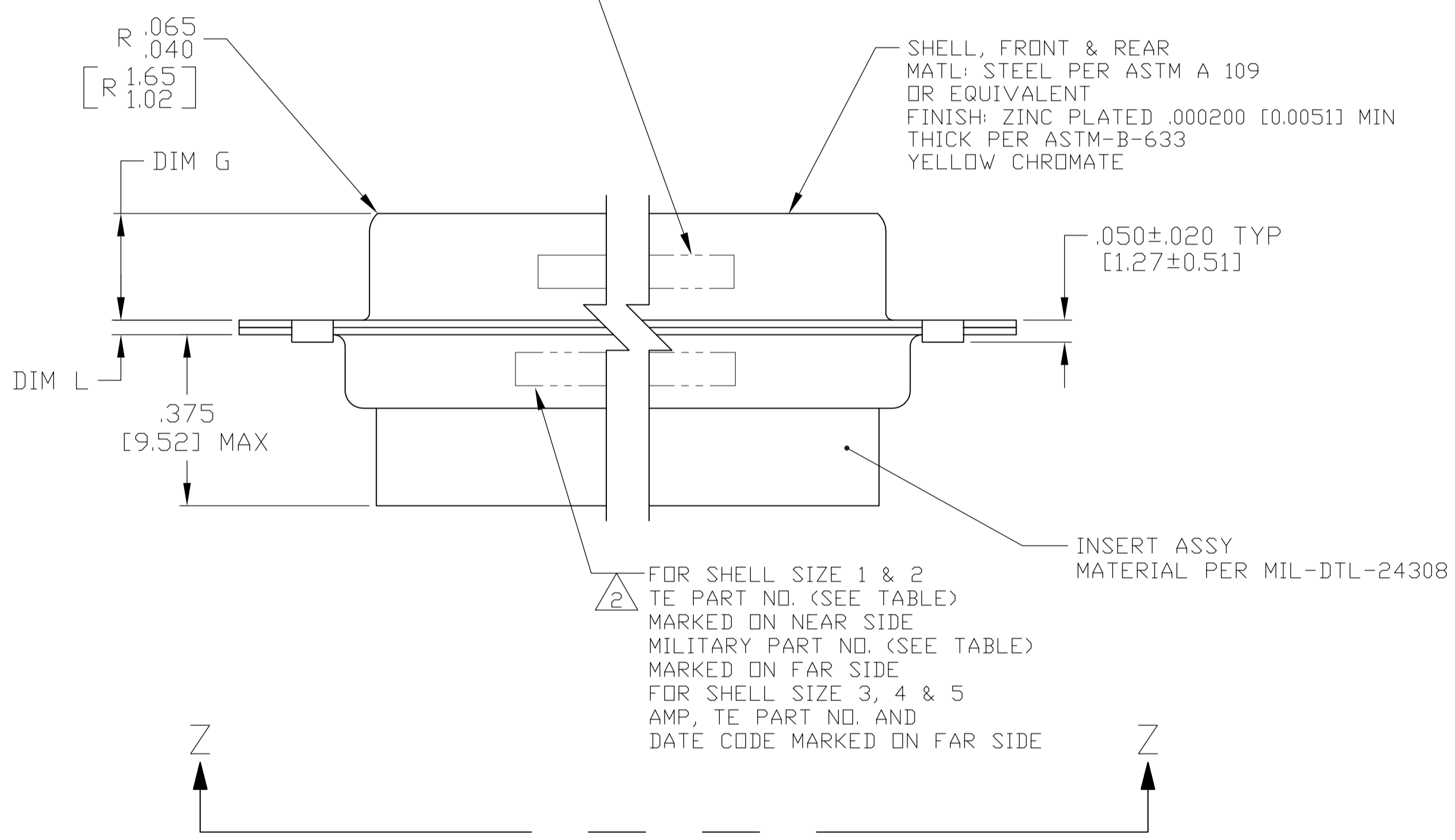


| REVISONS | | DATE | BY | APPV |
|----------|-----------------------|---------|----|------|
| H | REV PER ECO-15-016062 | 09NOV15 | KG | CD |



- THE CONNECTOR DESCRIBED IN THIS DOCUMENT WILL MATE WITH ANY RECEPTACLE CONNECTOR WITH THE SAME INSERT ARRANGEMENT.
- MARKED WITH .047-.062 [1.19-1.57] HIGH CHARACTERS. FAR SIDE REFERS TO THE WIDE SIDE OF THE KEYSTONE. NEAR SIDE REFERS TO THE NARROW SIDE OF THE KEYSTONE. WHEN SPACE IS LIMITED MARKING CAN BE SPLIT BETWEEN FRONT AND REAR SHELL.
- UL/CSA DESIGNATION STAMPED IN THIS AREA.
- CONNECTOR ASSEMBLY WITHOUT CONTACTS, TE CONNECTIVITY P/N 205089-1. MUST BE ORDERED SEPARATELY.
- CONNECTOR ASSEMBLY SUPPLIED WITH CONTACTS, TE CONNECTIVITY P/N 205089-1. PACKAGED IN A SEPARATE CONTAINER. QTY = NO. OF POSN. (SEE TABLE).

FOR SHELL SIZE 1 & 2
AMP & DATE CODE
MARKED ON NEAR SIDE
FOR SHELL SIZE 3, 4 & 5
MILITARY PART NO.
MARKED ON FAR SIDE



VIEW Z-Z

SIZE 20 PIN CONTACT
MATERIAL: COPPER ALLOY PER MIL-C-39029 & MIL-DTL-24308.
PLATING: GOLD PER ASTM-B-488 (TYPEII) OVER NICKEL
PER AMS-QQ-N-290.

| REMARKS | MILITARY P/N ON PACKAGE | MILITARY P/N ON CONNECTOR | MARKED TE PART NUMBER | L | J | H | G | F | E | D | C | B | A | INSERT ARRANGEMENT | NO OF POS | SHELL SIZE | PART NUMBER |
|---------|-------------------------|---------------------------|-----------------------|----------------------------|------------------------------|--------------------------------|----------------------------|------------------------------|------------------------------|------------------------------|--------------------------------|--------------------------------|--------------------------------|--------------------|-----------|------------|-------------|
| 5 | M24308/4-5Z | M24308/4-5Z | 1-1757819-0 | .049 [1.24] .029 [0.74] | .544 [13.82] .524 [13.31] | 2.188 [55.58] 2.168 [55.07] | .236 [5.99] .224 [5.69] | .436 [11.07] .416 [10.57] | .620 [15.75] .590 [14.99] | .446 [11.33] .436 [11.07] | 2.411 [61.24] 2.401 [60.99] | 2.084 [52.93] 2.074 [52.68] | 2.650 [67.31] 2.620 [66.55] | MS18277-1 | 50 | 5 | 1-1757819-0 |
| 5 | M24308/4-4Z | M24308/4-4Z | 1757819-9 | .049 [1.24] .029 [0.74] | .432 [10.97] .412 [10.46] | 2.282 [57.96] 2.262 [57.45] | .236 [5.99] .224 [5.69] | .436 [11.07] .416 [10.57] | .509 [12.93] .479 [12.17] | .334 [8.48] .324 [8.23] | 2.505 [63.63] 2.495 [63.37] | 2.187 [55.55] 2.177 [55.30] | 2.744 [69.70] 2.714 [68.94] | MS18276-1 | 37 | 4 | 1757819-9 |
| 5 | M24308/4-3Z | M24308/4-3Z | 1757819-8 | .049 [1.24] .029 [0.74] | .432 [10.97] .412 [10.46] | 1.635 [41.53] 1.615 [41.02] | .236 [5.99] .224 [5.69] | .436 [11.07] .416 [10.57] | .509 [12.93] .479 [12.17] | .334 [8.48] .324 [8.23] | 1.857 [47.17] 1.847 [46.91] | 1.539 [39.09] 1.529 [38.84] | 2.103 [53.42] 2.073 [52.65] | MS18275-1 | 25 | 3 | 1757819-8 |
| 5 | M24308/4-2Z | M24308/4-2Z | 1757819-7 | .040 [1.02] .020 [0.51] | .432 [10.97] .412 [10.46] | 1.093 [27.76] 1.073 [27.25] | .238 [6.05] .229 [5.82] | .432 [10.97] .412 [10.46] | .509 [12.93] .479 [12.17] | .334 [8.48] .324 [8.23] | 1.317 [33.45] 1.307 [33.20] | .999 [25.37] .989 [25.12] | 1.556 [39.52] 1.526 [38.76] | MS18274-1 | 15 | 2 | 1757819-7 |
| 5 | M24308/4-1Z | M24308/4-1Z | 1757819-6 | .040 [1.02] .020 [0.51] | .432 [10.97] .412 [10.46] | .769 [19.53] .749 [19.02] | .238 [6.05] .229 [5.82] | .432 [10.97] .412 [10.46] | .509 [12.93] .479 [12.17] | .334 [8.48] .324 [8.23] | .989 [25.12] .979 [24.87] | .671 [17.04] .661 [16.79] | 1.228 [31.19] 1.198 [30.43] | MS18273-1 | 9 | 1 | 1757819-6 |
| 4 | M24308/4-263Z | M24308/4-5Z | 1-1757819-0 | .049 [1.24] .029 [0.74] | .544 [13.82] .524 [13.31] | 2.188 [55.58] 2.168 [55.07] | .236 [5.99] .224 [5.69] | .436 [11.07] .416 [10.57] | .620 [15.75] .590 [14.99] | .446 [11.33] .436 [11.07] | 2.411 [61.24] 2.401 [60.99] | 2.084 [52.93] 2.074 [52.68] | 2.650 [67.31] 2.620 [66.55] | MS18277-1 | 50 | 5 | 1757819-5 |
| 4 | M24308/4-262Z | M24308/4-4Z | 1757819-9 | .049 [1.24] .029 [0.74] | .432 [10.97] .412 [10.46] | 2.282 [57.96] 2.262 [57.45] | .236 [5.99] .224 [5.69] | .436 [11.07] .416 [10.57] | .509 [12.93] .479 [12.17] | .334 [8.48] .324 [8.23] | 2.505 [63.63] 2.495 [63.37] | 2.187 [55.55] 2.177 [55.30] | 2.744 [69.70] 2.714 [68.94] | MS18276-1 | 37 | 4 | 1757819-4 |
| 4 | M24308/4-261Z | M24308/4-3Z | 1757819-8 | .049 [1.24] .029 [0.74] | .432 [10.97] .412 [10.46] | 1.635 [41.53] 1.615 [41.02] | .236 [5.99] .224 [5.69] | .436 [11.07] .416 [10.57] | .509 [12.93] .479 [12.17] | .334 [8.48] .324 [8.23] | 1.857 [47.17] 1.847 [46.91] | 1.539 [39.09] 1.529 [38.84] | 2.103 [53.42] 2.073 [52.65] | MS18275-1 | 25 | 3 | 1757819-3 |
| 4 | M24308/4-260Z | M24308/4-2Z | 1757819-7 | .040 [1.02] .020 [0.51] | .432 [10.97] .412 [10.46] | 1.093 [27.76] 1.073 [27.25] | .238 [6.05] .229 [5.82] | .432 [10.97] .412 [10.46] | .509 [12.93] .479 [12.17] | .334 [8.48] .324 [8.23] | 1.317 [33.45] 1.307 [33.20] | .999 [25.37] .989 [25.12] | 1.556 [39.52] 1.526 [38.76] | MS18274-1 | 15 | 2 | 1757819-2 |
| 4 | M24308/4-259Z | M24308/4-1Z | 1757819-6 | .040 [1.02] .020 [0.51] | .432 [10.97] .412 [10.46] | .769 [19.53] .749 [19.02] | .238 [6.05] .229 [5.82] | .432 [10.97] .412 [10.46] | .509 [12.93] .479 [12.17] | .334 [8.48] .324 [8.23] | .989 [25.12] .979 [24.87] | .671 [17.04] .661 [16.79] | 1.228 [31.19] 1.198 [30.43] | MS18273-1 | 9 | 1 | 1757819-1 |

THIS DRAWING IS A CONTROLLED DOCUMENT.

DTN: C.C. THOMAS 5-16-05
CHK: D. MILLER 5-17-05
APPV: D. MILLER 5-17-05

TE Connectivity

AMPLIMITE PLUG ASSY, SIZE 1 THRU 5 SERIES 109 WITH ZINC PLATED SHELLS

SIZE: A1 CAGE CODE: 00779 DRAWING NO: 1757819

CUSTOMER DRAWING SCALE: 4:1 SHEET: 1 OF 1 REV: H

X-ON Electronics

Largest Supplier of Electrical and Electronic Components

Click to view similar products for [D-Sub MIL Spec Connectors](#) category:

Click to view products by [TE Connectivity](#) manufacturer:

Other Similar products are found below :

[M85049/50-5F](#) [D38999/24WG11PB-LC](#) [MDM-9SH006A](#) [850-056-0812](#) [1218697-4](#) [D38999/26WJ61PC L/C](#) [1484349-1](#) [17D25HV](#)
[1996840-1](#) [243082-15](#) [1757682-1](#) [17D-E51218-1](#) [17SDA15S](#) [1883533-1](#) [1883886-1](#) [1883889-1](#) [192900-0377](#) [M24308/8-347](#) [M83513/03-](#)
[E09C](#) [443961-3](#) [5-1218949-1](#) [550-031NF1R6K](#) [3-1236089-2](#) [550E001NF1R3J0L](#) [550T001NF1R6K0L](#) [557T283NF5B08](#) [DC121073157](#)
[443869-3](#) [443869-4](#) [443869-5](#) [550S004NF1R1B0F03](#) [557E283NF1A06](#) [527-019NF0303R2K1F](#) [5-446405-1](#) [550-031NF1R2E](#)
[550E003M2R9J0F04](#) [550E003M3R9J0F05](#) [550E024M104R9J0](#) [550E024NF102R3J0B](#) [550E039NF1R3J1-02](#) [550S003M3R9B0F05](#)
[550S004M4R7M0F04](#) [550S004NF1R1B1F02](#) [550S008M3F0K0F04](#) [550S086M5R3J0L](#) [550S100NF3F0E](#) [550T001M2R7E0L](#)
[550T001NF1F0B1L](#) [550T001NF1R1K0G](#) [550T001NF1R3K0G](#)