

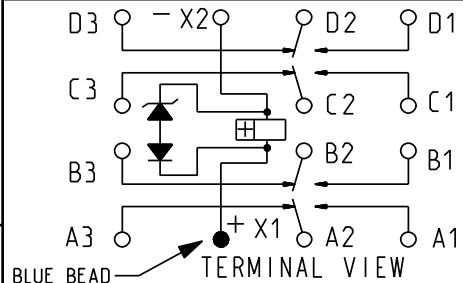
REV. B  
DCO 300825

TOLERANCES  $\pm .010$ " - UNLESS OTHERWISE SPECIFIED

COIL: @ 25°C  
 RESISTANCE \_\_\_\_\_ 400 OHMS  $\pm 10\%$   
 NOMINAL VOLTAGE \_\_\_\_\_ 28 VDC  
 MUST OPERATE \_\_\_\_\_ 13.5 VDC MAX.  
 \_\_\_\_\_ TRANSIENT SUPPRESSION - 42 VDC MAX.  
 MUST RELEASE \_\_\_\_\_ 5.5 VDC MAX., 2.3 VDC MIN.

ENVIRONMENT:  
 VIBRATION \_\_\_\_\_ 57 \_\_\_\_\_ Hz TO \_\_\_\_\_ 3000 \_\_\_\_\_ Hz @ \_\_\_\_\_ 20 \_\_\_\_\_ g's  
 SHOCK \_\_\_\_\_ 100 \_\_\_\_\_ g's \_\_\_\_\_ 6 \_\_\_\_\_ MS. DURATION  
 TEMPERATURE \_\_\_\_\_ -70 \_\_\_\_\_ °C TO \_\_\_\_\_ +125 \_\_\_\_\_ °C  
 NOTES: \_\_\_\_\_ OPERATE, RELEASE 6 MS MAX.  
 \_\_\_\_\_ CONTACT STABILIZATION 2.5 MS MAX.  
 \_\_\_\_\_ CONTACT BOUNCE 1 MS MAX.  
 \_\_\_\_\_ CONTACT BREAK BOUNCE 0.1 MS MAX.

CUSTOMER DATA SHEET



CONTACT RATING: \_\_\_\_\_ LOW LEVEL  
 \_\_\_\_\_ 5 AMPS 28 VDC, 115 VAC 400 Hz RESISTIVE  
 \_\_\_\_\_ 100,000 OPERATIONS

DR. B.D. 30APR2008 | CK. 5/9/08 J.M.B.

**Tyco Electronics** ©COPYRIGHT 2005  
 TYCO ELECTRONICS CORPORATION  
 ALL INTERNATIONAL RIGHTS RESERVED

CUST. \_\_\_\_\_ M83536/6-024M  
 CUST. NO. \_\_\_\_\_ REV. ---

TE NUMBER  
 8-1617760-5

CII PART NUMBER  
 FCB-405-0624M

## X-ON Electronics

Largest Supplier of Electrical and Electronic Components

*Click to view similar products for [General Purpose Relays](#) category:*

*Click to view products by [TE Connectivity](#) manufacturer:*

Other Similar products are found below :

[PCN-105D3MH,000](#) [59641F200](#) [LY1SAC110120](#) [5X827E](#) [5X837F](#) [5X840F](#) [5X842F](#) [5X848E](#) [LY2N-AC120](#) [LY2S-AC220/240](#) [LY2-US-AC120](#) [LY3-US-AC120](#) [LY4F-UA-DC12](#) [LY4F-UA-DC24](#) [LY4F-US-AC120](#) [LY4F-US-AC240](#) [LY4F-US-DC24](#) [LY4F-VD-AC110](#) [LYQ20DC12](#) [M115C60](#) [M115N010](#) [M115N0150](#) [6031007G](#) [603-12D](#) [61211T0B4](#) [61212T400](#) [61222Q400](#) [61243B600](#) [61243C500](#) [61243Q400](#) [61311BOA2](#) [61311BOA6](#) [61311BOA8](#) [61311C0A2](#) [61311COA1](#) [61311COA6](#) [61311F0A2](#) [61311QOA1](#) [61311QOA4](#) [61311T0D6](#) [61311TOA6](#) [61311TOA7](#) [61311TOB3](#) [61311TOB4](#) [61311U0A6](#) [61312Q600](#) [61312T400](#) [61312T600](#) [61313U200](#) [61313U400](#)