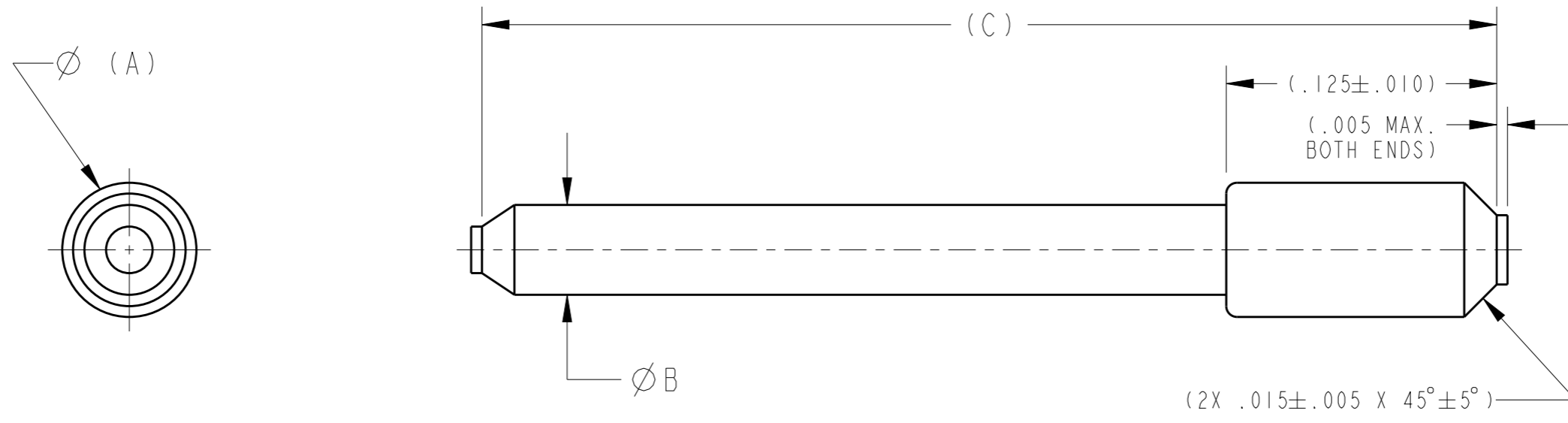


THIS DRAWING IS UNPUBLISHED. RELEASED FOR PUBLICATION 20  
 © COPYRIGHT 20 BY - ALL RIGHTS RESERVED.

LOC	DIST	REVISIONS			
P	LTR	DESCRIPTION	DATE	DWN	APVD
-	-	A	ACTIVE RELEASE PER ECO-14-001075	140221	GS AT
		B	REVISED PER ECO-15-018025	151215	SS BP
		C	REVISED PER ECO-18-018279	181109	PF AR




PART NUMBER ***	SUPERCEDED NUMBER	SIZE	(COLOR CODE)	MILITARY PART NUMBER	$\varnothing(A)$ MAX.	$\varnothing(B)$ MAX.	$(C)$ MAX
MS27488-22-2	-	22	BLACK	MS27488-22-2	.066	.045	.500
MS27488-20-2	-	20	RED	MS27488-20-2	.090	.058	.805
MS27488-16-2	-	16	GREEN	MS27488-16-2	.130	.079	.872
MS27488-12-2	-	12	ORANGE	MS27488-12-2	.170	.125	.841
MS27488-16-3	0613-1-1601	16	BLUE	MS27488-16-3	.130	.079	1.472
MS27488-12-3	0613-1-1201	12	YELLOW	MS27488-12-3	.170	.125	1.441

©

DESCRIPTION:  
 SIZE 22, 20, 16  
 AND 12 PER MS27488

3. MATERIAL: PLASTIC ROD, MOLDED AND EXTRUDED-TEMPERATURE LIMIT 200°C MINIMUM. POLYPHENYLSULFONE (PPSU) PER ASTM-D6394. (B)
  2. (INSULATION RESISTANCE SHALL BE 100 MEGAOHMS MINIMUM WHEN TESTED IN ACCORDANCE WITH ASTM D257.)
  1. DIMENSIONS AND TOLERANCES SHOWN FOR REFERENCE ONLY.
- NOTES: UNLESS OTHERWISE SPECIFIED.

THIS DRAWING IS A CONTROLLED DOCUMENT.		DWN G.S. 130918	 TE Connectivity	
DIMENSIONS: INCHES		CHK A. TEUNISSEN 140122		
TOLERANCES UNLESS OTHERWISE SPECIFIED:		APVD A. RENGIFO 140221	NAME SEAL, PLUG PER MS27488 ENVELOPE	
0 PLC ±- 1 PLC ±0.1 2 PLC ±0.01 3 PLC ±0.005 4 PLC ±0.0001 ANGLES ±0.5		PRODUCT SPEC MS27488	SIZE A3	
MATERIAL SEE NOTE 3		APPLICATION SPEC -	CAGE CODE 11139	DRAWING NO MS27488-x-x-x
FINISH -		WEIGHT -	RESTRICTED TO -	SCALE 15.000
		Customer Drawing	SHEET 1 OF 1	REV C

## X-ON Electronics

Largest Supplier of Electrical and Electronic Components

*Click to view similar products for* [Circular MIL Spec Tools, Hardware & Accessories](#) *category:*

*Click to view products by* [TE Connectivity](#) *manufacturer:*

Other Similar products are found below :

[0113-201-2025](#) [600-079-06](#) [600-146-06](#) [M10-101983-183](#) [M10-454396-008](#) [602GB18808](#) [6134-333-1990](#) [6134-334-1590](#) [6134-334-2190](#)  
[CS3102A-22-14PW](#) [M2887615-CD](#) [627-009](#) [M38999/9-19B](#) [630A007NF083A](#) [630B007M051A](#) [630BJ003NF032H](#) [637-149NF04B](#)  
[M39029/29-215](#) [6408-203V-09273](#) [6426-201-11343](#) [650FS002NF16](#) [660-008NF14S7-01](#) [660-009M22H8-03](#) [660-013NF19U6-210](#) [660-](#)  
[015M10S6-17](#) [660-015NF10S5-01](#) [660-015NF14R3.5-01](#) [660-023NF19H6-19](#) [660-024NF11S12-01](#) [660-024NF11S3-01](#) [660-024NF17S4-](#)  
[109](#) [660-050XM17F4-01](#) [660-068NF25R6-30G](#) [660-070M23S8-04](#) [660-073MTCH9-20](#) [M83723/61-18W](#) [M83723/61-218R](#) [M83723/61-](#)  
[224W](#) [667-084-23C](#) [667-084-35C](#) [667-224NF16](#) [687-697NF-1](#) [M85049/94-10-A](#) [M85049/96-7-A](#) [M855282-10A01A](#) [M85528/2-10B](#)  
[M855282-18A01A](#) [M85528/2-22A01A](#) [M85528/2-22AA](#) [710HS460NF2508](#)