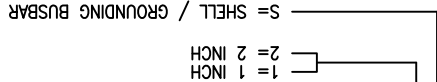


NOTES:

1. SHELL PART NUMBER VARIABLES: (NOT ALL POSSIBLE CONFIGURATIONS SHOWN ON THIS DRAWING ARE AVAILABLE AS STANDARD PRODUCTS. PLEASE CHECK WITH RAYCHEM TO CONFIRM AVAILABILITY.)
 MTC1000-SHX-XZX-XXX

MODIFICATIONS (see table 1) (THIS SPACE BLANK IF NO MODIFICATION IS APPLICABLE)
 2 WITH CABLE CLAMP AND EARS ON SHELL
 3 W/O CABLE CLAMP AND EARS ON SHELL
 2 = ELECTROLESS NICKEL (BLACK MARKING)
 P = PLUG
 F = FLANGED
 R = FLANGELESS RECEPTACLE



2. MATERIAL:

- A) SHELL ALUMINUM ALLOY PER ASTM B85
- B) RETENTION CLIP COPPER ALLOY 172 PER ASTM B194
- C) CAP SCREW STAINLESS STEEL PER SAE-AMS-QQ-S-763, 300 SERIES
- D) POST * STAINLESS STEEL, PER AISI 17-4 PH
- E) ROLL PIN STAINLESS STEEL PER SAE-AMS 5673, 400 SERIES
- F) KEYING PIN HIGH GRADE POLYARYLENE THERMOPLASTIC, MOLDED
- G) KEY PINS INSERT HIGH GRADE POLYARYLENE THERMOPLASTIC, MOLDED
- H) CLAMP BAR STAINLESS STEEL PER SAE-AMS-QQ-S-763, 300 SERIES
- I) CLAMP INSERT SILICONE ELASTOMER PER MIL-DTL-25988B
- J) DRIVER * STAINLESS STEEL, PER AISI 17-4 PH
- K) SPRING STAINLESS STEEL PER AMS 5673, 17-7 PH
- L) HELIX * STAINLESS STEEL, PER AISI 17-4 PH

3. FINISH:

APPLIES TO NICKEL PLATED CONNECTORS

* ACCEPTABLE ALTERNATE, STAINLESS STEEL, PER MPF STD 35, MIM-17-4 PH

- A) SHELL NICKEL PLATED PER SAE-AMS-C-26074 CLASS 3, GRADE B
- B) RETENTION CLIP NICKEL PLATED PER SAE-AMS-C-26074 CLASS 2, 00002 MINIMUM
- C) POST CAP SCREW PASSIVATED PER SAE-AMS-QQ-P-35
- D) POST NICKEL TEFLON PLATED PER TECHMETALS 117C
- E) HELIX NICKEL TEFLON PLATED PER TECHMETALS 117C
- F) ROLL PIN PASSIVATED PER SAE-AMS-QQ-P-35
- G) DRIVER PASSIVATED PER SAE-AMS-QQ-P-35

4 KEYING PIN IS SUPPLIED UNINSTALLED, USER TO PRESS INTO PROPER KEYING POSITION. SEE TABLE 5 FOR STANDARD KEYING PIN POSITIONS.
 FOR ADDITIONAL KEYING OPTIONS REFER TO D-659-0080.

5 STANDARD (RED) DUST CAP ARE SUPPLIED WITH EACH PLUG AND RECEPTACLE. SEE TABLE VI FOR MORE INFORMATION.

6 APPROPRIATE PART NUMBERS AND DATE CODES ARE STAMPED APPROXIMATELY AS SHOWN ON "B" SIDE. ALL "A" SIDE MARKINGS ARE OPTIONAL.

7. THESE PARTS MEET THE REQUIREMENTS OF TE SPECIFICATION C-6114.

8 THESE ITEMS ARE SUPPLIED UNASSEMBLED.

9 SEE TABLE II SHEET II WEIGHTS ARE WITHOUT DUST CAP.

10 RECEPTACLE POST SCREWS (CAP SCREWS) ARE TO BE TORQUED TO 15±1 INCH-LBS (1.0±0.07 N-M)

11 PLUG AND RECEPTACLE SHELLS ARE DESIGNED TO ACCEPT EITHER PIN OR SOCKET INSERTS, OR MIXED IN THE TWO INCHES STYLE.

12 THIS RECEPTACLE IS RECOMMENDED FOR REAR PANEL MOUNTING APPLICATION, REMOVING AS MANY PANEL WASHERS AS REQUIRED TO ACCOMMODATE THE THICKNESS OF THE PANEL BEING USED. SEE SHEET 3, TABLE 4, FIGURE 1. USE ONLY SCREWS SUPPLIED WITH CONNECTOR. POST TO BE FLUSH WITHIN TOLERANCE AS SHOWN SEE VIEW "A" PAGE # 1.

13 WHEN MOUNTING FLANGELESS CONNECTORS ADJACENT TO ONE ANOTHER AND USING THE .400 MINIMUM CENTERLINE LOCATION, THERE WILL BE NO WEB BETWEEN PANEL CUT-OUTS.

14 THE HARDWARE FOR THIS CONNECTOR IS DESIGNED TO BE USED ON 0.063 INCH PANEL THICKNESS. OTHERWISE 2 THIN WASHERS (PANEL WASHERS) ARE REQUIRED FOR EACH POST. USE PART D-659-0042. SEE SHEET 3, TABLE 3, FOR DETAILS.

TABLE I (MODIFICATIONS)	
MODIFICATION DASH NUMBER	DESCRIPTION
-022	SAME AS STANDARD ASSEMBLY, EXCEPT CONTACTS AND SEALING PLUGS ARE INCLUDED.
-023	SAME AS STANDARD ASSEMBLY, EXCEPT CONTACTS SEALING PLUGS AND INSERTION / EXTRACTION TOOL ARE INCLUDED.

REV	MTC1000-SHX-XZX-XXX
DWG. NO.	MTC1000-SHX-XZX-XXX

Raychem MTC CUSTOMER DRAWING

ITEM	PART NUMBER	SIZE	TYPE	USED WITH SHELL	DUCT CAP MATERIAL
1	D-659-0060	1"	PLUG	X	POLYETHYLENE RED ELECTROSTATIC PINK
2	D-659-0062	2"	PLUG	X	
3	CHA-1603	1"	RECEPTACLE	X	
4	CHA-1604	2"	RECEPTACLE	X	
5	CHA-0098	1"	PLUG		
6	CHA-0100	2"	PLUG		
7	CHA-0311	1"	RECEPTACLE		
8	CHA-0312	2"	RECEPTACLE		

TABLE VI
RECOMMENDED DUST CAP

PART NUMBER	WEIGHT MAXIMUM GRAMS
MTC1000-SH1-F22	29.9
MTC1000-SH1-F23	19.0
MTC1000-SH1-R23	18.6
MTC1000-SH2-F22	40.5
MTC1000-SH2-F23	28.9
MTC1000-SH2-P22	39.7
MTC1000-SH2-R22	36.4
MTC1000-SH1-F22	26.2
MTC1000-SH1-P22	29.5
MTC1000-SH1-R23	24.7

THE FOLLOWING TABLE CONSISTS OF WEIGHTS FOR THESE SPECIFIC PART NUMBERS.

TABLE IV	NUMBER OF PANEL WASHERS FOR EACH FASTENER	PANEL THICKNESS
1	0.031/0.036 [0.8]/[0.9]	0.062/0.067 [1.5]/[1.7]
2	0	
0		

SUGGESTED KEYING CODES	
A-A	[Diagram]
A-B	[Diagram]
A-C	[Diagram]
A-D	[Diagram]
B-A	[Diagram]
B-B	[Diagram]
B-C	[Diagram]
B-D	[Diagram]
C-A	[Diagram]
C-B	[Diagram]
C-C	[Diagram]
C-D	[Diagram]
D-A	[Diagram]
D-B	[Diagram]
D-C	[Diagram]
D-D	[Diagram]

WHEN USING STANDARD RECTANGULAR KEYING PINS

RECEPTACLE FACE
PLUG FACE

CONNECTOR SIZE	TYPE:	1 INCH		2 INCH	
		FLANGELESS	FLANGED	FLANGELESS	FLANGED
"Z" (MIN)	"X"	1.750 [44.5]	1.750 [44.5]	2.750 [69.9]	2.750 [69.9]
"Y"	"Y"	1.520 [38.6]	1.520 [38.6]	2.520 [64.0]	2.520 [64.0]
"Z"	"Z"	0.400 [10.16]	0.400 [10.16]	0.400 [10.16]	0.600 [15.24]

TABLE III

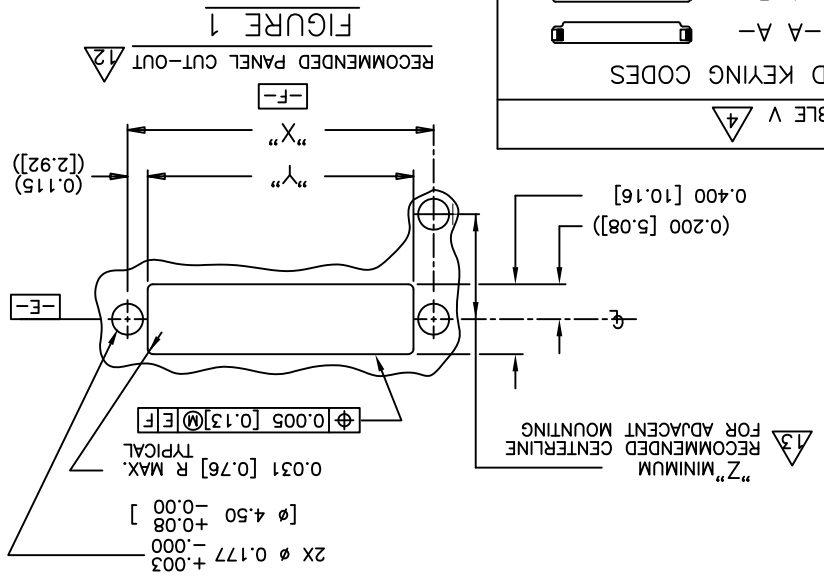


FIGURE 1

RECOMMENDED PANEL CUT-OUT

X-ON Electronics

Largest Supplier of Electrical and Electronic Components

Click to view similar products for [Rack & Panel Connectors](#) category:

Click to view products by [TE Connectivity](#) manufacturer:

Other Similar products are found below :

[00170420102](#) [00171410002](#) [00171420202](#) [00171440002](#) [008026165000265](#) [00-8219-072-000-112P44](#) [008219072000112P5](#)
[008219072000112P61](#) [00-8223-096-580-102](#) [02-014-013-5200-000](#) [00-8129-015-610-108](#) [613467-000](#) [CTJ112E01E-513](#) [CTJ116E03A-513](#)
[CTJ720E01B-513 L/C](#) [M81714/63-22S L/C](#) [M81714/65-12-1](#) [66020-2](#) [CW8958-000](#) [699886-000](#) [D250-50632](#) [70.400.3240.0](#) [70.955.2453.3](#)
[733753-000](#) [F22831-000](#) [780-522-DPX34RG8-02](#) [MMA25-0051R1](#) [MMA25-0341D1](#) [8660-501](#) [87.060.0053.0](#) [900709N001](#) [QRP4-12P-](#)
[C\(01\)](#) [QR/P6-6S-C\(01\)](#) [AC-600003-004](#) [1218600-1](#) [D-659-0061](#) [DMC-MD 24 C-T](#) [1-445717-6](#) [1484398-2](#) [1484399-2](#) [1484469-2](#) [MR-](#)
[34MG](#) [1484225-1](#) [1484398-1](#) [1484510-4](#) [1604997-2](#) [1663130-1](#) [1663767-7](#) [1663767-8](#) [MTC100-BF1-P31CS015](#)