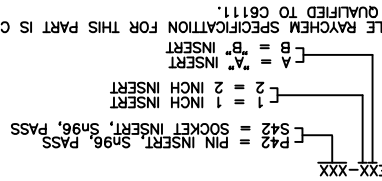


THIS DRAWING AND THE INFORMATION CONTAINED HEREIN ARE THE PROPERTY OF TYCO ELECTRONICS AND ARE TO BE HELD IN TRUST AND CONFIDENCE. PUBLICATION, DUPLICATION, OR USE FOR ANY PURPOSE NOT EXPRESSLY AUTHORIZED IN WRITING BY TYCO ELECTRONICS IS PROHIBITED.

REV	DATE	DESCRIPTION	APPROVED
B1	96/1/30	REVISIONS	M.HIGGY
B	96/6/2011	ADMINISTRATIVE CHANGE PER ECO-11-024448	M.HIGGY

NOTES:
1. PART NUMBER VARIABLE:
MTC50-EXX-XXX

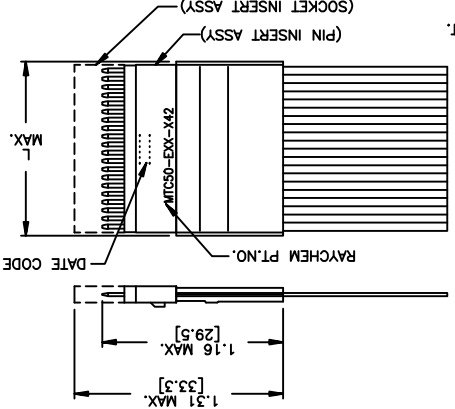


2. THIS PART IS QUALIFIED TO CB111.
3. MATERIAL:
A. SEALING BOOT: TRANSPARENT BLUE HEAT SHRINKABLE, MODIFIED THERMOPLASTIC HOT MELT SEALANT.
C. INSERT BODY: HIGH GRADE POLYARYLENE THERMOPLASTIC OR EQUIVALENT.
D. PIN/SOCKET CONTACTS: COPPER ALLOY C17200 PER ASTM B194. SEE RAYCHEM SPECIFICATION CONTROL DRAWING D-141-0169.
E. PRE-ASSEMBLED Solder sleeves
4. FINISH:
A. PIN/SOCKET INSERT: AS MOLDED
B. PIN/SOCKET CONTACTS: GOLD PLATED PER MIL-G-45204, TYPE 1, GRADE C, CLASS 1 OVER SUITABLE UNDERPLATE.
SOLDER COATED PER QQ-S-571, S96, FLUX COATED PER QQ-S-571, TYPE RMA.

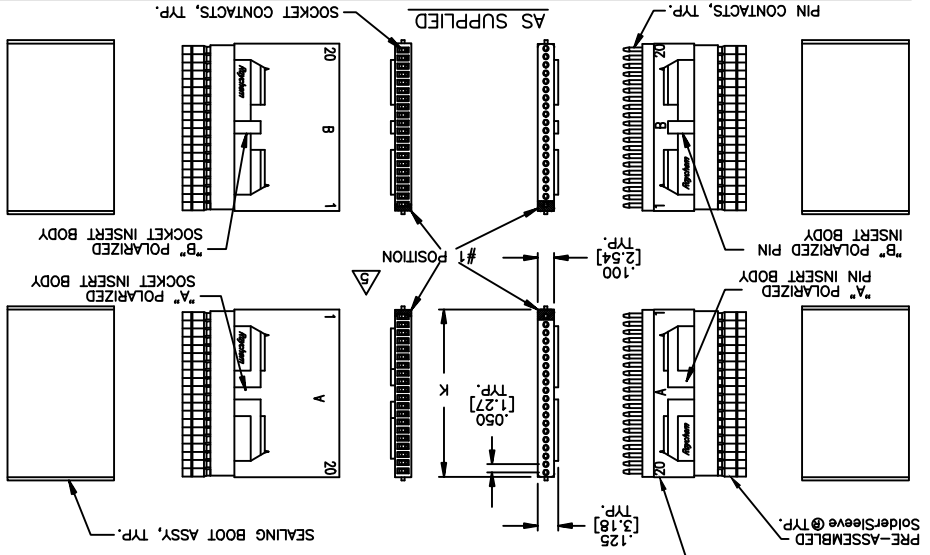
5. POSITION IS MARKED IN CONTRASTING COLOR.
6. DIELECTRIC WITHSTANDING VOLTAGE:
TEST CONDITION (MATED)
TEST VOLTAGE VAC RMS AT 60 HZ.
SEA LEVEL
ALITUDE 70,000 FT. (33.5 TORR) AMBIENT TEMP.
ALITUDE 80,000 FT. (20.6 TORR) -50°C TEMP.
750
500
375

7. CURRENT RATING: 2.0 AMPS PER CONTACT.
8. USABLE WIRE SIZE: FLAT CONDUCTOR CABLE: 28 AWG
9. CONSULT FACTORY FOR RAYCHEM ENGINEERING STANDARD FOR TERMINATION METHOD.
10. THE CORRECT MATING PART FOR A RAYCHEM MTC50 PIN INSERT IS A RAYCHEM MTC50 SOCKET INSERT. THE SPECIFIED PERFORMANCE OF THIS CONNECTOR IS BASED ON TEST PERFORMANCE WHEN ASSEMBLED WITH THE CORRECT MATING PART.

DESCRIPTION	1" INSERT	2" INSERT
WEIGHT (MAXIMUM)	0.074 LBS. [3.357 gm]	0.147 LBS. [6.668 gm]
L	1.140 [28.96]	2.140 [54.36]
K	1.035 [26.29]	2.035 [51.69]



3. AFTER BOOT ASSY & TERMINATION



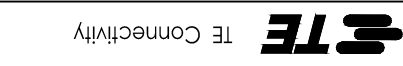
REV	DATE	DESCRIPTION	APPROVED
B1	90NOV29	REVISIONS	MCHOBSON
C	90DEC11	CHANGED TO 125 CELSIUS DEGREE OPERATING TEMPERATURE, FLAT CABLE CONDUCTOR, 28 AWG, MTC50 SERIES	EZ
C	90DEC11	CHANGED TO 125 CELSIUS DEGREE OPERATING TEMPERATURE, FLAT CABLE CONDUCTOR, 28 AWG, MTC50 SERIES	AKN
C	90DEC11	CHANGED TO 125 CELSIUS DEGREE OPERATING TEMPERATURE, FLAT CABLE CONDUCTOR, 28 AWG, MTC50 SERIES	EZ

© 2011 Tyco Electronics. All rights reserved.
Raychem MTC CUSTOMER DRAWING

MTC50-EXX-P42/S42

SHEET 1

SCALE: NONE
MTC50-EXX-P42/S42
REV B1



X-ON Electronics

Largest Supplier of Electrical and Electronic Components

Click to view similar products for te connectivity manufacturer:

Other Similar products are found below :

[570416-000](#) [CLTEQ-M81CE-SSRELAY-4-20V](#) [D38999/24FJ4AN](#) [358838-000](#) [4-1195131-0](#) [650069-000](#) [SMD100-2](#) [CB-1022B-78](#)
[RM707012](#) [RP410012](#) [MMS42](#) [1-640426-8](#) [2EDL4CM](#) [DTS20W19-11PD-3028-LC](#) [RM202615](#) [NC6-P104-06](#) [MSPS103B](#) [DTS26F21-41AE](#) [DTS26F21-41PE-LC](#) [DTS26F21-11SE-3028-LC](#) [1932144-1](#) [293545-4](#) [LVR125S](#) [MS27466T25F4PB](#) [CKB-38-78010](#)
[1206SFF150F/63-2](#) [D38999/20JB35HA](#) [D38999/24WJ20PA](#) [1754138-1](#) [TE1500A2R2J](#) [DTS24F25-29PC-3028-LC](#) [D38999/24WG11HA](#)
[D38999/24WG11HN](#) [MS27467T21F11H](#) [DJT16E21-11HA](#) [1206SFH150F/24-2](#) [DTS24F19-11SC-3028-LC](#) [DTS24F21-41HN-LC](#)
[DTS24F21-41AN](#) [DTS24F21-41PN-LC](#) [RP330024](#) [MS27467T21F35J](#) [MS27467T21F11J](#) [MS27467T21F16H-LC](#) [MS27467T21F35H](#)
[MS27467T21F41H-LC](#) [DJT16E21-11PA-LC](#) [DJT16E21-11HA-LC](#) [DJT16E21-11AA](#) [MS27467T21B11JA](#)