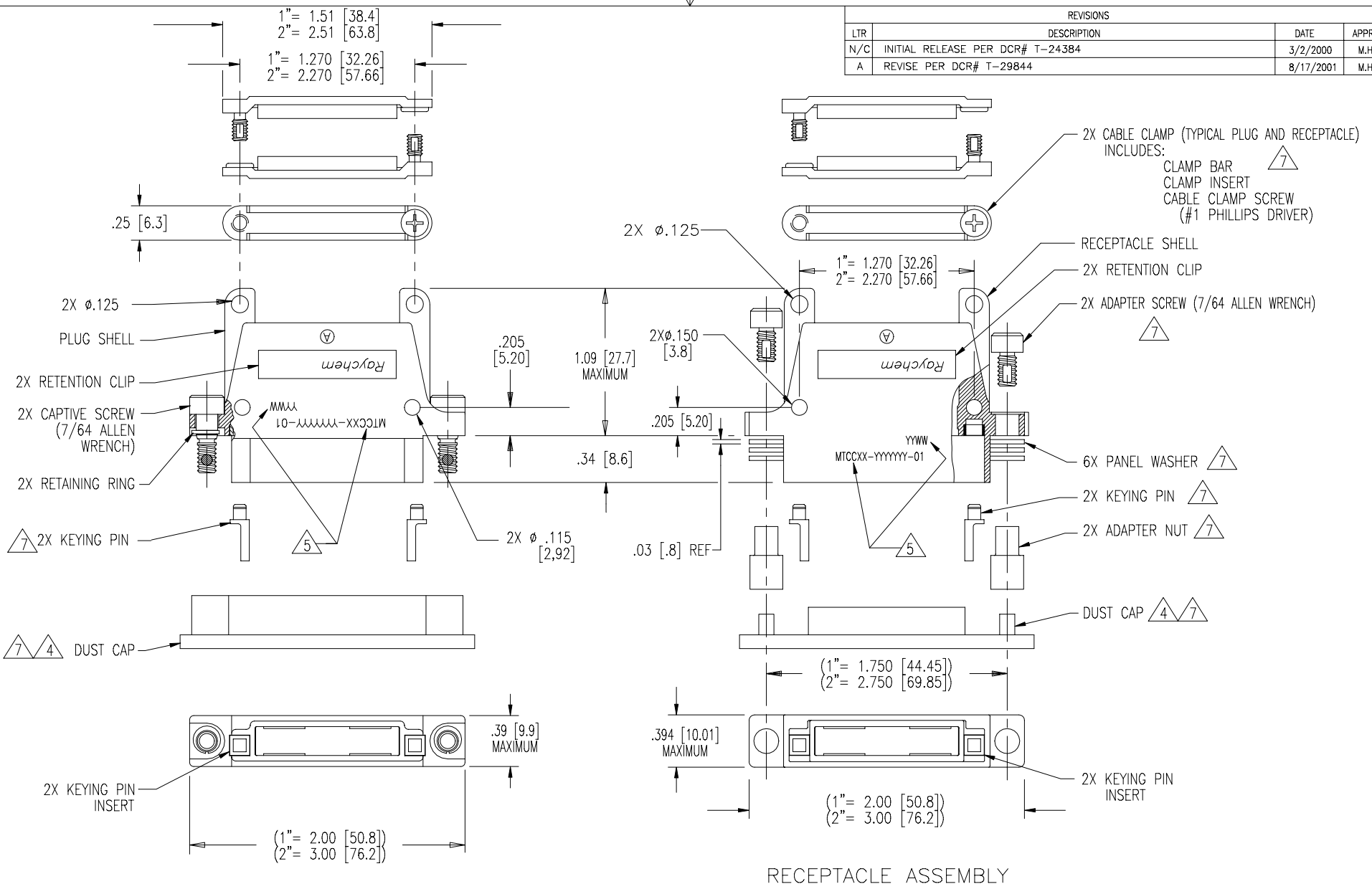


REVISIONS			
LTR	DESCRIPTION	DATE	APPROVED
N/C	INITIAL RELEASE PER DCR# T-24384	3/2/2000	M.HIGGY
A	REVISE PER DCR# T-29844	8/17/2001	M.HIGGY



2X CABLE CLAMP (TYPICAL PLUG AND RECEPTACLE)
INCLUDES:
CLAMP BAR
CLAMP INSERT
CABLE CLAMP SCREW
(#1 PHILLIPS DRIVER)

PLUG ASSEMBLY

RECEPTACLE ASSEMBLY

SPECIFICATION CONTROL DRAWING

NOTES: SEE SHEET 2.

UNLESS OTHERWISE SPECIFIED DIMENSIONS ARE IN INCHES. METRIC DIMENSIONS ARE IN BRACKETS. DECIMALS .XXX ± .005 { .13 mm } .XX ± .02 { .5 mm } ANGLES .X ± WEIGHT:	DRAWN ZS.ORBAN 2/29/2000	tyco / <i>Electronics</i> / <i>Raychem</i> WIRE AND HARNESSING PRODUCTS 307 CONSTITUTION DRIVE MENLO PARK, CALIFORNIA 94025	
	CHECKED		TITLE SHELL, PLUG OR RECEPTACLE, SPECIAL MARKING, 1" AND 2" WITH EARS, CADMIUM PLATED
	APPROVED		SIZE CODE IDENT. NO. DWG. NO.
	APPROVED M.HIGGY 3/2/2000		C 06090 MTCCXX-YYYYYY-01
CAD NAME T29844a,b,DWG	THIRD ANGLE PROJECTION	DO NOT SCALE THIS DRAWING	

SHEET 1
DWG. NO. MTCCXX-YYYYY-01

REV A

NOTES:

1 PART NUMBER VARIABLES:

MTCCXX-YYYYYY-01

01= WITH CABLE CLAMP

CUSTOMER SPECIFIED PART MARKING
(ANY LENGTH)

SHELL TYPES:

P= PLUG WITH EARS
R= RECEPTACLE WITH EARS

CONNECTOR WIDTH:

1= 1 INCH
2= 2 INCH

TABLE I	
PART NUMBER	WEIGHT MAXIMUM GRAMS
MTCC1R-YYYYYY-01	27.3
MTCC1P-YYYYYY-01	23.8
MTCC2R-YYYYYY-01	38.3
MTCC2P-YYYYYY-01	34.2

2. MATERIAL:

- A) SHELL ALUMINUM ALLOY PER QQ-A-591
- B) RETENTION CLIP COPPER ALLOY 172 PER QQ-C-533
- C) ADAPTER SCREW OR CAP SCREW STAINLESS STEEL PER QQ-S-763, 300 SERIES
- D) ADAPTER NUT OR RETAINER BUSHING STAINLESS STEEL PER QQ-S-763, 300 SERIES
- E) PANEL OR LOCK WASHER STAINLESS STEEL PER QQ-S-763 OR QQ-S-766, 300 SERIES
- F) KEYING PIN HIGH GRADE POLYARYLENE THERMOPLASTIC, MOLDED
- G) KEY PINS INSERT HIGH GRADE POLYARYLENE THERMOPLASTIC, MOLDED
- H) CLAMP BAR STAINLESS STEEL PER QQ-S-763, 300 SERIES
- J) CLAMP INSERT SILICONE ELASTOMER PER MIL-R-25988
- K) CAPTIVE SCREW STAINLESS STEEL PER QQ-S-763, 300 SERIES
- L) RETAINING RING COPPER ALLOY 172 PER QQ-C-533
- M) DUST CUP POLYETHYLENE LOW DENSITY PER L-P-390, COLOR RED.

3. FINISH: CADMIUM PLATED CONNECTORS

- A) SHELL CADMIUM PLATED PER QQ-P-416
OVER NICKEL UNDERPLATE
- B) RETENTION CLIP CADMIUM PLATED PER QQ-P-416
- C) ADAPTER OR CAP SCREW CADMIUM PLATED PER QQ-P-416
- D) ADAPTER NUT OR RETAINER BUSHING CADMIUM PLATED PER QQ-P-416
- E) PANEL OR LOCK WASHER CADMIUM PLATED PER QQ-P-416
- F) CLAMP BAR CADMIUM PLATED PER QQ-P-416
- G) CAPTIVE SCREW CADMIUM PLATED PER QQ-P-416
- H) RETAINING RING CADMIUM PLATED PER QQ-P-416

4 DUST CAP SUPPLIED WITH EACH PLUG OR RECEPTACLE.

5 APPROPRIATE PART NUMBER AND DATE CODE ARE STAMPED APPROXIMATELY AS SHOWN.

6. THESE PARTS MEET THE REQUIREMENTS OF RAYCHEM SPECIFICATION C-6111.

7 INDICATED PARTS ARE SHIPPED LOOSE.

8 SEE TABLE I, WEIGHTS ARE WITHOUT DUST CAP.

DWG NO. MTCCXX-YYYYYY-01 SHEET 2

DWG. NO.	REV
MTCCXX-YYYYYY-01	A
CAD FILE No.: T29844b.DWG SHEET 2 OF 2	

X-ON Electronics

Largest Supplier of Electrical and Electronic Components

Click to view similar products for [Rack & Panel Connectors](#) category:

Click to view products by [TE Connectivity](#) manufacturer:

Other Similar products are found below :

[00171410002](#) [00171420202](#) [00171440002](#) [02-014-013-5200-000](#) [613467-000](#) [CTJ112E01E-513](#) [CTJ116E03A-513](#) [66020-2](#) [CW8958-000](#)
[699886-000](#) [D250-50632](#) [70.400.3240.0](#) [70.955.2453.3](#) [733753-000](#) [F22831-000](#) [780-522-DPX34RG8-02](#) [8660-501](#) [87.060.0053.0](#)
[900709N001](#) [928358-1](#) [D-659-0061](#) [1-445717-6](#) [1484469-2](#) [1604997-2](#) [MTC100-BF1-P31CS015](#) [MTC100-KT2-0083](#) [MTC100-KT2-0123-](#)
[003](#) [MTC100-YA1-005](#) [MTCQKT1R2PGCA](#) [MTCR-103-04S](#) [MTCX1X-100-100CS025](#) [1738331-1](#) [1757667-1](#) [1811481-1](#) [1883433-1](#)
[201046-7](#) [202648-4](#) [213364-1](#) [226503-000](#) [937028-164](#) [1663130-2](#) [172305-4](#) [F36711-000](#) [202355-2](#) [202356-2](#) [G16S-A](#) [G20S-AB](#) [CHA-](#)
[0017-003](#) [CHA-0296](#) [354654-000](#)