

OAC Series

AC Output Modules

cULus File E29244

Users should thoroughly review the technical data before selecting a product part number. It is recommended that users also seek out the pertinent approvals files of the agencies/laboratories and review them to ensure the product meets the requirements for a given application.

Features

- .6" (15.2mm) thick package.
- 4000V rms optical isolation.
- High immunity to false operation.
- Series compatible.
- Output modules can be controlled from sinking or sourcing logic.
- Compatible with 2IOM series mounting boards.

Engineering Data

- Switch Form:** 1 Form A (SPST-NO)
- Duty:** Continuous.
- Operating Temperature:** -30°C to +80°C.
- Storage Temperature:** -30°C to +100°C.
- Potting Compound Flammability:** UL94V-0.
- Solderability:** 260°C for 5 seconds, maximum.
- Approximate Weight:** 1.38 oz. (35g).

Ordering Information

| Typical Part Number > | OAC | -5 | A |
|---|-----|----|---|
| 1. Basic Series: OAC = AC output module — black case | | | |
| 2. Input Voltage: 5 = 5VDC 15 = 15VDC 24 = 24VDC | | | |
| 3. Output: Blank = 3A, 12-120VAC, zero voltage turn-on output A = 3A, 24-280VAC, zero voltage turn-on output H = 5A, 24-280VAC, zero voltage turn-on output R = 24-280VAC, Random Turn-On | | | |

Our authorized distributors are more likely to maintain the following items in stock for immediate delivery.

- | | | |
|--------|--------|---------|
| OAC-5 | OAC-5H | OAC-24 |
| OAC-5A | OAC-15 | OAC-24A |

Input Specifications

| Parameter | Conditions | Units | OAC-5 OAC-5A OAC-5H OAC-5R | | | OAC-15 OAC-15A OAC-15H OAC-15R | | | OAC-24 OAC-24A OAC-24H OAC-24R | | |
|---|---------------------|-------|-------------------------------------|------|------|---|------|------|---|------|------|
| | | | Min. | Typ. | Max. | Min. | Typ. | Max. | Min. | Typ. | Max. |
| Control Voltage Range V_{IN} | | VDC | 3 | 5 | 8 | 9 | 15 | 18 | 18 | 24 | 32 |
| Must Operate Voltage $V_{IN(OP)}$ (Min.) | | VDC | | | 3 | | | 9 | | | 18 |
| Must release Voltage $V_{IN(REL)}$ (Min.) | | VDC | 1 | | | 1 | | | 1 | | |
| Input Current | @ V_{IN} =Nominal | mADC | 2 - 10 | | | 6 - 12 | | | 4 - 12 | | |
| Input Resistance R_{IN} | | Ohms | Current Regulator | | | | | | | | |

PIN-3 must be positive with respect to PIN-4 for correct operation.

OAC Series (Continued)

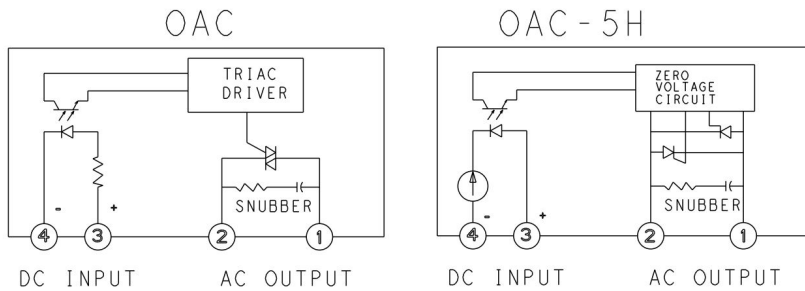
AC Output Modules

Output Specifications (47 to 63 Hz, @+25°C unless otherwise specified)

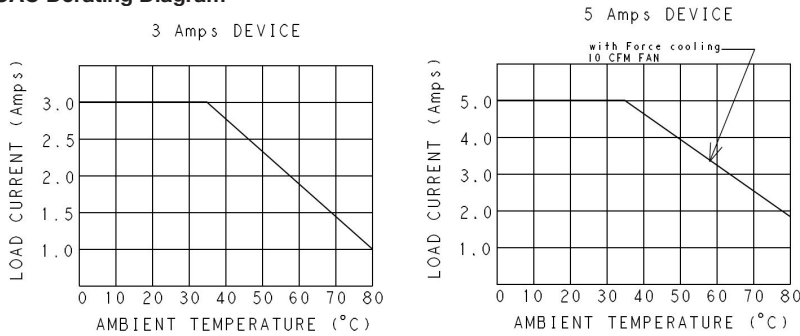
| Parameter | Conditions | Units | OAC-5 OAC-15 OAC-24 | | | OAC-5A OAC-15A OAC-24A | | | OAC-5H OAC-15H OAC-24H | | | OAC-5R OAC-15R OAC-24R | | |
|-----------------------------|--------------|--------|---------------------------|------|----------|------------------------------|------|----------|------------------------------|------|----------|------------------------------|------|------|
| | | | Min. | Typ. | Max. | Min. | Typ. | Max. | Min. | Typ. | Max. | Min. | Typ. | Max. |
| Load Voltage VL | | V rms | 12 | | 120 | 24 | | 280 | 24 | | 280 | 24 | | 280 |
| Repetitive Blocking Voltage | | V peak | | | 400 | | | 600 | | | 600 | | | 600 |
| Load Current IL* | | A rms | .05 | | 3 | .05 | | 3 | .05 | | 5 | .05 | | 5 |
| Single Cycle Surge Current | | A peak | | | 208 | | | 208 | | | 300 | | | 300 |
| Leakage Current (Off-State) | VL=280VAC | mA rms | | | 5 | | | 5 | | | 5 | | | 5 |
| On-State Voltage Drop | IL=Max. | V rms | | | 1.8 | | | 1.8 | | | 1.6 | | | 1.6 |
| Static dv / dt (Off-State) | | V/μs | | | 475 | | | 475 | | | 300 | | | 300 |
| Turn-On Time | @f=60/50 Hz. | ms | | | 8.3 / 10 | | | 8.3 / 10 | | | 8.3 / 10 | | | 0.1 |
| Turn-Off Time | | ms | | | 8.3 / 10 | | | 8.3 / 10 | | | .3 / 10 | | | 8.3 |
| HP / Rating | @ 240VAC | HP | | | 1/4 | | | 1/4 | | | 1/2 | | | 1/2 |

* See Derating curve

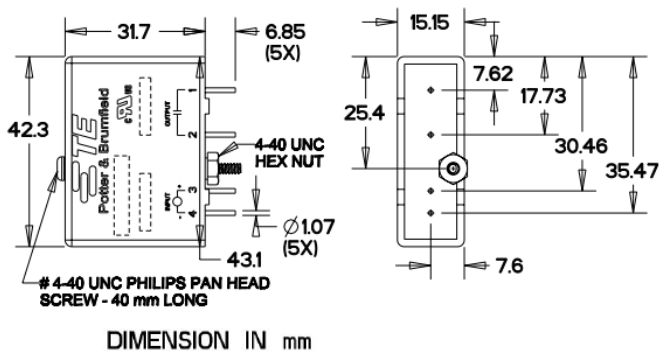
OAC Operating Diagram



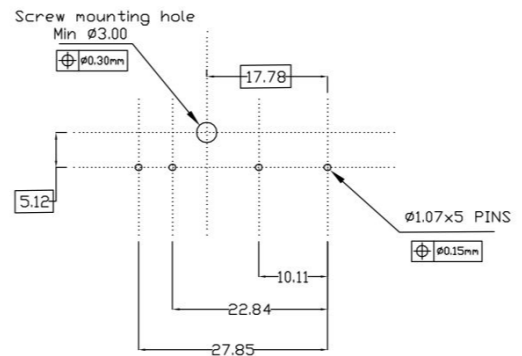
OAC Derating Diagram



Outline Dimensions



PCB Layout



Note : Extra nut and washer will be provided on the screw, which will go under PCB to fix the relay. Hex Nut S= 6.35 (width across flats), Thickness = 2.40; Washer = OD : Φ485±0.25, ID : Φ2.75±0.15, Thickness : 0.55

X-ON Electronics

Largest Supplier of Electrical and Electronic Components

Click to view similar products for I/O Modules category:

Click to view products by TE Connectivity manufacturer:

Other Similar products are found below :

[70L-IDC5S](#) [70L-OAC-L](#) [70Z3289-4](#) [G21960000700](#) [G21960002700](#) [G34960002700](#) [OACU](#) [C4SWOUT](#) [PB16H](#) [G34960001700](#) [G3TA-OA101SZ-1](#) [DC24](#) [G77-S](#) [5607189](#) [DA5](#) [ODC-24A](#) [IDC5P](#) [FC6A-N16B1](#) [6421](#) [FC6A-N32B3](#) [70MRCQ32-HL](#) [G3TAOD201SDC24](#) [C200H-LK201-V1](#) [G3TA-OA202SZ-US](#) [DC12](#) [GT1-OD16](#) [GT1-AD04CST](#) [B7AM-6BS](#) [70GRCQ24-HS](#) [6422](#) [84110410](#) [GT1-OD16MX](#) [G7VC-OC16-B7](#) [70MRCK24-DIN](#) [6202](#) [6402](#) [FC6A-J2C1](#) [FC6A-KC1C](#) [FC6A-R081](#) [FC6A-J8CU1](#) [GP32900003700](#) [641-480-5022](#) [PB16H](#) [84145010](#) [84110210](#) [FRUSB1601](#) [PCL-720+-BE](#) [FRRJ451601](#) [AP24MX3DB25F](#) [ADAM-5053S-AE](#) [WISE-S614-A](#) [ADAM-5051S-AE](#)