

4

3

2

1

THIS DRAWING IS UNPUBLISHED.

RELEASED FOR PUBLICATION

ALL RIGHTS RESERVED.

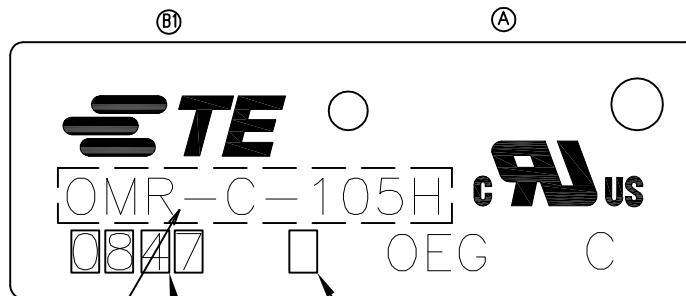
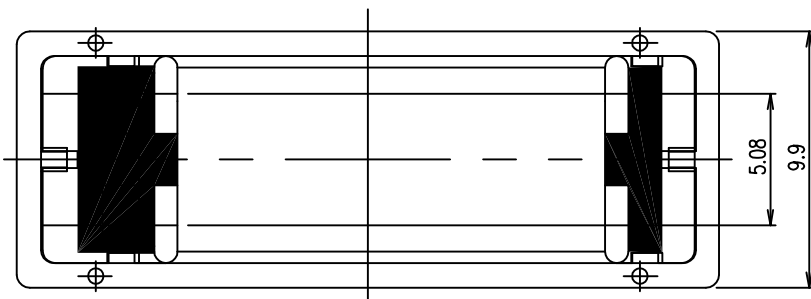
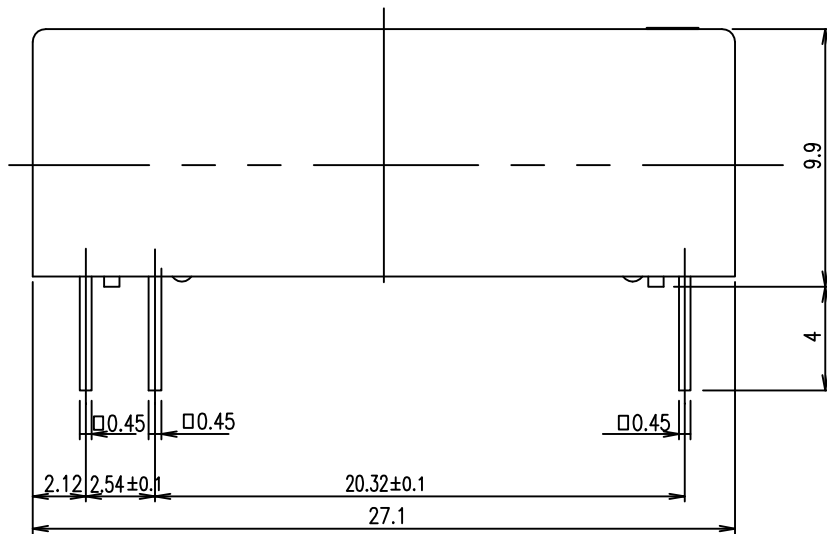
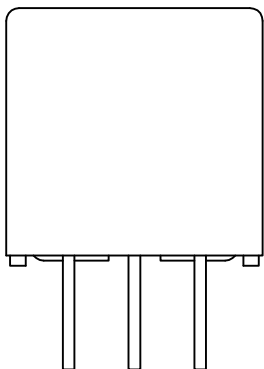
© COPYRIGHT - By TE CONNECTIVITY

LOC
HB

DIST
-

REVISIONS

P	LTR	DESCRIPTION	DATE	DWN	APVD
B1		1.CHANGE TE LOGO 2.ADD LINE IDENTIFICATION 3.PN OBSOLETE	23-AUG-12	S.P	B.H.Y



ONE CHARACTER FOR LINE IDENTIFICATION (B1)
 LOT No. (A)
 PART A
 VIEW C

ACTIVE	2-1440000-6	OMR-C-112H	OMR-C-112H	c
OBSOLETE	2-1440000-4	OMR-C-109H	OMR-C-109H	b
ACTIVE	2-1440000-2	OMR-C-105H	OMR-C-105H	a
STATUS	TE PART NO	EC TYPE NO	PART A	TYPE

(B1)

RELAY TYPE

THIS DRAWING IS A CONTROLLED DOCUMENT.

DWN H.SASAKI	TE Connectivity OMR CUSTOMER DRAWING		
CHK Y.OIKAWA			
APVD A.NAGAI	NAME		
PRODUCT SPEC			
APPLICATION SPEC			
WEIGHT	SIZE A3	CAGE CODE 00779	DRAWING NO C=2-1440000-2
CUSTOMER DRAWING	RESTRICTED TO	SCALE 5:1	SHEET 1 OF 2
			REV B1

THIS DRAWING IS UNPUBLISHED.

RELEASED FOR PUBLICATION

-. - .

© COPYRIGHT - By TE CONNECTIVITY

ALL RIGHTS RESERVED.

LOC

DIST

REVISIONS

HB

P

LTR

DESCRIPTION

DATE

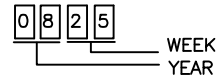
DWN

APVD

SEE SHEET 1

NOTES:

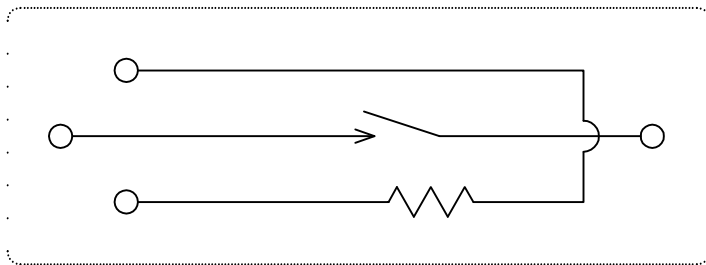
1.LOT NO. SYSTEM AS FOLLOWING:



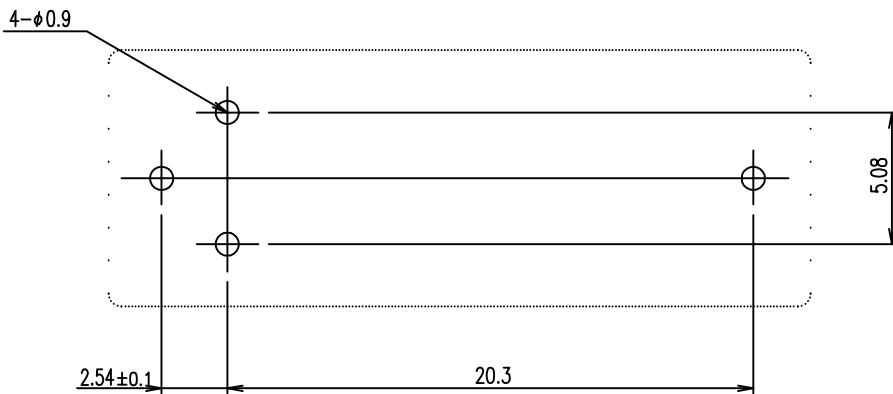
2.GENERAL TOLERANCE AS FOLLOWING:

TOLERANCE	
0~0.99mm	±0.1
1mm~2.99mm	±0.2
3mm MIN.	±0.3

3.TERMINAL DIMENSION IS NOT INCLUDING SOLDER TIP.



CONNECTION DIAGRAM (BOTTOM VIEW)

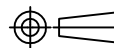


DRILLING DIAGRAM (BOTTOM VIEW)

	—	EPOXY RESIN	SEAL (BOBBIN+CASE)	9
	—	EPOXY RESIN	SEAL (COIL TERMINAL+BOBBIN)	8
	—	POLYESTER	TAPE	7
CLASS E	—	JUEW	MAGNETIC WIRE	6
	—	HCP WIRE	COIL TERMINAL	5
	—	DIRLINE	SPACER	4
	—	—	REED SWITCH	3
V-0	—	PBT	CASE	2
V-0	—	PBT	BOBBIN	1
INCOMBUSTIBILITY	TREATMENT	MATERIAL	DESCRIPTION	ITEM

THIS DRAWING IS A CONTROLLED DOCUMENT.

DIMENSIONS:
mm



TOLERANCES UNLESS OTHERWISE SPECIFIED:

0 PLC	± -
1 PLC	± -
2 PLC	± -
3 PLC	± -
4 PLC	± -
ANGLES	± -

MATERIAL FINISH

DWN

H.SASAKI

CHK

Y.OIKAWA

APVD

A.NAGAI

PRODUCT SPEC

—

APPLICATION SPEC

—

WEIGHT

—

CUSTOMER DRAWING



TE Connectivity

NAME

OMR CUSTOMER DRAWING

SIZE

A3

CAGE CODE

00779

DRAWING NO

G=2-1440000-2

RESTRICTED TO

—

SCALE

5:1

SHEET

2 OF 2

REV

B1

X-ON Electronics

Largest Supplier of Electrical and Electronic Components

Click to view similar products for [Reed Relays](#) category:

Click to view products by [TE Connectivity](#) manufacturer:

Other Similar products are found below :

[M2C24AH](#) [D1A05HD-3](#) [741A10](#) [8000-0211](#) [8000-0217](#) [836C2](#) [922A06C4C](#) [PRMA1A12C](#) [PRMA1A24B](#) [PRMA1A24C](#) [PRMA1B12C](#)
[PRMA1B24C](#) [PRMA1C05F](#) [PRMA2A24C](#) [R1C5DR](#) [R2A5D](#) [1220-0039](#) [RA30521051](#) [RA31232051](#) [HGS1005](#) [HGS1021](#) [HGS1048](#)
[HGS1088](#) [HGS2MT51111F00](#) [HGS2MT51111M00](#) [HGZM1C24](#) [HGZM2C05](#) [HGZM2C48](#) [DA1A24DWD](#) [DA1A-24V](#) [DA1C05FWD](#)
[DA1C12FW](#) [DA2A-6V](#) [134MPCX-3](#) [MRR1ADS8-12D](#) [MRR1ADS8-24D](#) [MRR1ADS8-5D](#) [MRR1ADSK-12D](#) [159-151-T00](#) [MSS62A05](#)
[MSS71A05](#) [MSS71A05B](#) [MSS71A12](#) [MSS71A24](#) [1804-105](#) [191TE1C2M-5S](#) [191TE2A1-5G](#) [191TE2A1-6G](#) [193RE4C3-24G](#) [HYR2001-1520](#)