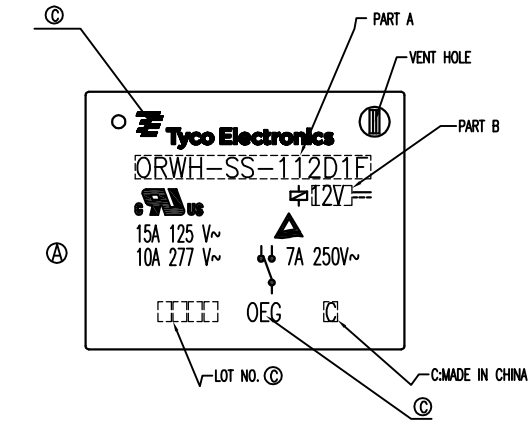
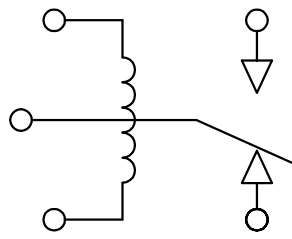


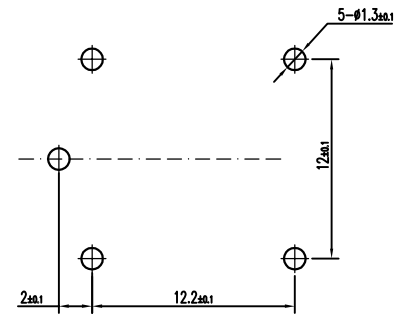
LOC HB	DIST	REVISIONS					
		P	LTR	DESCRIPTION	DATE	DWN	APVD
			D	PN. OBSOLETE ECO-12-004810	24APR12	BL.L	BHY



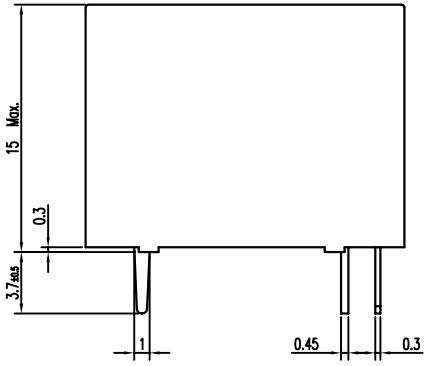
CIRCUIT DIAGRAM (BOTTOM VIEW)



DRILLING DIAGRAM (BOTTOM VIEW)



STATUS	PART NO	PART B	PART A	ITEM
OBSOLETE	1721150-1	3V	ORWH-SS-103D1F	A
ACTIVE	1721150-2	5V	ORWH-SS-105D1F	B
ACTIVE	1721150-3	6V	ORWH-SS-106D1F	C
ACTIVE	1721150-4	9V	ORWH-SS-109D1F	D
ACTIVE	1721150-5	12V	ORWH-SS-112D1F	E
OBSOLETE	1721150-6	18V	ORWH-SS-118D1F	F
ACTIVE	1721150-7	24V	ORWH-SS-124D1F	G
ACTIVE	1721150-8	48V	ORWH-SS-148D1F	H
OBSOLETE	1721150-9	3V	ORWH-SH-103D1F	I
ACTIVE	1-1721150-0	5V	ORWH-SH-105D1F	J
OBSOLETE	1-1721150-1	6V	ORWH-SH-106D1F	K
OBSOLETE	1-1721150-2	9V	ORWH-SH-109D1F	L
ACTIVE	1-1721150-3	12V	ORWH-SH-112D1F	M
OBSOLETE	1-1721150-4	18V	ORWH-SH-118D1F	N
ACTIVE	1-1721150-5	24V	ORWH-SH-124D1F	O
ACTIVE	1-1721150-6	48V	ORWH-SH-148D1F	P
ACTIVE	1-1721150-7	24V	ORWH-SH-124D1F	R



NOTE
 ©1.LOT NO. SYSTEM AS FOLLOWING:

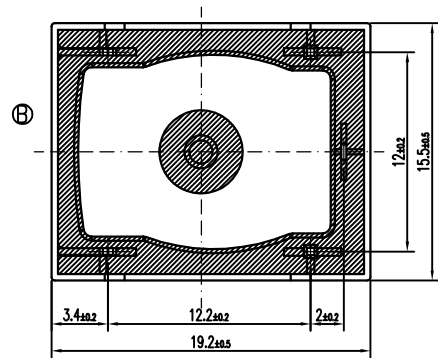
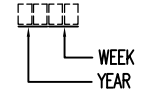


Diagram dimension	Tolerance
0.99mm max.	±0.1mm
1 - 2.99mm	±0.2mm
3mm min.	±0.3mm

DIMENSIONS: mm		TOLERANCES UNLESS OTHERWISE SPECIFIED:		DWN	XN.ZHANG
0 PLC ±		1 PLC ±		CHK	WAYNE.PENG
1 PLC ±		2 PLC ±		APVD	MJ.HO
2 PLC ±		3 PLC ±		PRODUCT SPEC	
3 PLC ±		4 PLC ±		APPLICATION SPEC	
4 PLC ±				WEIGHT	
MATERIAL		FINISH		SIZE	A3
SEE MATERIAL TABLE				GAGE CODE	00779
				DRAWING NO	1721150
				RESTRICT TO	
CUSTOMER DRAWING				SCALE	3:1
				SHEET	1 OF 1
				REV	D

		UV RESIN	UV SEAL (FOR SH)	14	
		EPOXY RESIN	SEAL	13	
CLASS 155 F		MW79	MAGNETIC WIRE	12	
		HCP	COIL TERMINAL	11	
UL94 V-0		PBT	BOBBIN	10	
UL94 V-0		PBT	CASE	9	
		Ag ALLOY	STATIONARY CONTACT	8	
		Ag ALLOY	MOVABLE CONTACT	7	
		Cu ALLOY	MOVABLE SPRING	6	
		Cu ALLOY	NC TERMINAL	5	
		Cu ALLOY	NO TERMINAL	4	
		Cu PLATED	STEEL	CORE	3
		Cu PLATED	STEEL	ARMATURE FORM C	2
		Ni PLATED	STEEL	YOKE	1
INCOMBUSTIBILITY	TREATMENT	MATERIAL	DESCRIPTION	ITEM	



ORWH-1T Cd FREE CUSTOMER DRAWING

X-ON Electronics

Largest Supplier of Electrical and Electronic Components

Click to view similar products for [General Purpose Relays](#) category:

Click to view products by [TE Connectivity](#) manufacturer:

Other Similar products are found below :

[PCN-105D3MH,000](#) [59641F200](#) [LY1SAC110120](#) [5X827E](#) [5X837F](#) [5X840F](#) [5X842F](#) [5X848E](#) [LY2N-AC120](#) [LY2S-AC220/240](#) [LY2-US-AC120](#) [LY3-US-AC120](#) [LY4F-UA-DC12](#) [LY4F-UA-DC24](#) [LY4F-US-AC120](#) [LY4F-US-AC240](#) [LY4F-US-DC24](#) [LY4F-VD-AC110](#) [LYQ20DC12](#) [M115C60](#) [M115N010](#) [M115N0150](#) [6031007G](#) [603-12D](#) [61211T0B4](#) [61212T400](#) [61222Q400](#) [61243B600](#) [61243C500](#) [61243Q400](#) [61311BOA2](#) [61311BOA6](#) [61311BOA8](#) [61311C0A2](#) [61311COA1](#) [61311COA6](#) [61311F0A2](#) [61311QOA1](#) [61311QOA4](#) [61311T0D6](#) [61311TOA6](#) [61311TOA7](#) [61311TOB3](#) [61311TOB4](#) [61311U0A6](#) [61312Q600](#) [61312T400](#) [61312T600](#) [61313U200](#) [61313U400](#)