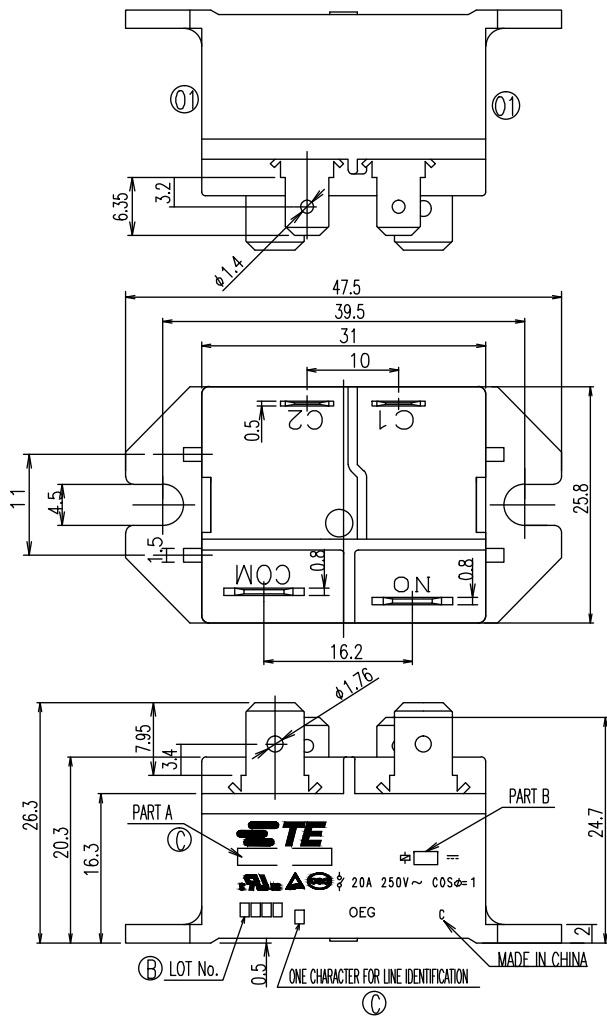


THIS DRAWING IS UNPUBLISHED. RELEASED FOR PUBLICATION  
 © COPYRIGHT - By - ALL RIGHTS RESERVED.

LOC	DIST	REVISIONS			
P	LTR	DESCRIPTION	DATE	DWN	APVD
HB	-				
B1		TE LOGO CHANGE; TERMINALS TOLERANCE CLARIFICATION; ADD LINE IDENTIFIER TO MARKING. ECO-13-013967	02-SPE-13	K.T	B.F
C		PN OBSOLETE. ECO-12-008675	03-NOV-14	K.T	B.F



- NOTES:  
 ① 1. LOT NO. SYSTEM AS FOLLOWING:  
  
 ② 2. ONE CHARACTER DISTINGUISH THE LINE IDENTITY, SUCH AS: A, B...  
 ③ 3. TERMINAL DIMENSION IS BEFORE SOLDER DIP.  
 ④ 4. FOR THE TIN-PLATING OF THE PINS:  
 +0.1mm FOR WIDTH, THICKNESS AND DIAMETER.  
 +0.5mm FOR LENGTH.

CONNECTION DIAGRAM

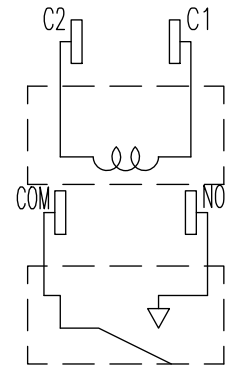


DIAGRAM DIMENSION	TOLERANCE
0.99mm MAX.	±0.1mm
1 - 2.99mm	±0.2mm
3mm MIN.	±0.3mm

THIS DRAWING IS A CONTROLLED DOCUMENT.		DWN N. FUNAYAMA		TE Connectivity	
DIMENSIONS: mm		CHK M.J. Ho			
TOLERANCES UNLESS OTHERWISE SPECIFIED:		APVD Y. ADACHI		NAME PCFL CUSTOMER DRAWING	
0 PLC ±- 1 PLC ±- 2 PLC ±- 3 PLC ±- 4 PLC ±- ANGLES ±-		PRODUCT SPEC -		DRAWING NO A3 00779 C=1649000	
MATERIAL -		FINISH -		RESTRICTED TO -	
CUSTOMER DRAWING				SCALE 2:1	SHEET 1 OF 2
				REV C	

4

3

2

1



THIS DRAWING IS UNPUBLISHED. RELEASED FOR PUBLICATION  
 © COPYRIGHT - By - ALL RIGHTS RESERVED.

LOC	DIST	REVISIONS			
P	LTR	DESCRIPTION	DATE	DWN	APVD
HB	-	SEE SHEET 1	-	-	-

ⓑ	ACTIVE	2-1649000-1	PCFL-112D2M ,13000	12V	PCFL-112D2M	o
Ⓒ	OBSOLETE	1-1649000-4	PCFL-110D1M ,000	10.5V	PCFL-110D1M	n
	ACTIVE	1-1649000-3	PCFL-110D2M ,000	10.5V	PCFL-110D2M	m
Ⓒ	OBSOLETE	1-1649000-2	PCFL-105D1M ,000	5V	PCFL-105D1M	l
Ⓒ	OBSOLETE	1-1649000-1	PCFL-105D2M ,000	5V	PCFL-105D2M	k
Ⓒ	OBSOLETE	1-1649000-0	PCFL-148D1M ,000	48V	PCFL-148D1M	j
Ⓒ	OBSOLETE	1649000-9	PCFL-124D1M ,000	24V	PCFL-124D1M	i
Ⓒ	OBSOLETE	1649000-8	PCFL-112D1M ,000	12V	PCFL-112D1M	h
Ⓒ	OBSOLETE	1649000-7	PCFL-109D1M ,000	9V	PCFL-109D1M	g
Ⓒ	OBSOLETE	1649000-6	PCFL-106D1M ,000	6V	PCFL-106D1M	f
Ⓒ	OBSOLETE	1649000-5	PCFL-148D2M ,000	48V	PCFL-148D2M	e
	ACTIVE	1649000-4	PCFL-124D2M ,000	24V	PCFL-124D2M	d
	ACTIVE	1649000-3	PCFL-112D2M ,000	12V	PCFL-112D2M	c
Ⓒ	OBSOLETE	1649000-2	PCFL-109D2M ,000	9V	PCFL-109D2M	b
Ⓒ	OBSOLETE	1649000-1	PCFL-106D2M ,000	6V	PCFL-106D2M	a
	PN STATUS	PART NUMBER	EC TYPE NAME	PART B	PART A	No

RELAY TYPE

		UEW	MAGNETIC WIRE	17
		Ag ALLOY	STATIONARY CONTACT	16
		Ag ALLOY	MOVABLE CONTACT	15
		Cu ALLOY	COIL TERMINAL	14
		Cu ALLOY	COIL TERMINAL R	13
		Cu ALLOY	COIL TERMINAL L	12
		Cu ALLOY	MOVABLE SPRING	11
		Cu ALLOY	STATIONARY TERMINAL	10
		Cu ALLOY	MOVABLE TERMINAL	9
UL94 V-0		PPS	CARD	8
		Cu ALLOY	HINGE SPRING	7
		Ni PLATED	STEEL CORE	6
		Ni PLATED	STEEL ARMATURE	5
		Ni PLATED	STEEL YOKE	4
UL94 V-0		PBT	BOBBIN	3
UL94 V-0/CTI600		PBT	BASE	2
UL94 V-0		PBT	CASE	1
INCOMBUSTIBILITY	TREATMENT	MATERIAL	DESCRIPTION	ITEM

THIS DRAWING IS A CONTROLLED DOCUMENT.		DWN N.FUNAYAMA	 TE Connectivity	
DIMENSIONS: mm		CHK M.J.Ho		
		APVD Y.ADACHI	NAME PCFL CUSTOMER DRAWING	
TOLERANCES UNLESS OTHERWISE SPECIFIED:		PRODUCT SPEC -	DRAWING NO C=1649000	
0 PLC ±- 1 PLC ±- 2 PLC ±- 3 PLC ±- 4 PLC ±- ANGLES ±-		APPLICATION SPEC -	SIZE A3	CAGE CODE 00779
MATERIAL -	FINISH -	WEIGHT -	DRAWING NO C=1649000	RESTRICTED TO -
CUSTOMER DRAWING			SCALE 2:1	SHEET 2 of 2
			REV C	

## X-ON Electronics

Largest Supplier of Electrical and Electronic Components

*Click to view similar products for [General Purpose Relays](#) category:*

*Click to view products by [TE Connectivity](#) manufacturer:*

Other Similar products are found below :

[APF30318](#) [JVN1AF-4.5V-F](#) [PCN-105D3MHZ](#) [5JO-10000S-SIL](#) [5JO-1000CD-SIL](#) [5JO-400CD-SIL](#) [LY2S-AC220/240](#) [LYQ20DC12](#)  
[6031007G](#) [6131406HQ](#) [6-1393099-3](#) [6-1393099-8](#) [6-1393122-4](#) [6-1393123-2](#) [6-1393767-1](#) [6-1393843-7](#) [6-1415012-1](#) [6-1419102-2](#) [6-](#)  
[1423698-4](#) [6-1608051-6](#) [6-1608067-0](#) [6-1616170-6](#) [6-1616248-2](#) [6-1616282-3](#) [6-1616348-2](#) [6-1616350-1](#) [6-1616350-8](#) [6-1616358-7](#) [6-](#)  
[1616359-9](#) [6-1616360-9](#) [6-1616931-6](#) [6-1617039-1](#) [6-1617052-1](#) [6-1617090-2](#) [6-1617090-5](#) [6-1617347-5](#) [6-1617353-3](#) [6-1617801-8](#) [6-](#)  
[1617802-2](#) [6-1618107-9](#) [6-1618248-4](#) [M83536/1-027M](#) [CX-4014](#) [MAHC-5494](#) [MAVCD-5419-6](#) [703XCX-120A](#) [7-1393100-5](#) [7-1393111-7](#)  
[7-1393144-5](#) [7-1393767-8](#)