

QUICK CONNECT

The *ULTEMate* electrical connection solution for harsh environments.

Being constructed from Ultem®, a high temperature and corrosion resistant composite material, makes this the '*ULTEMate*' electrical connection solution. The Quick Connect series of 2, 7 and 12 way composite connectors are chemical resistant and environmentally sealed to IP68.

They are ideal for the most rigorous applications. In addition, the cable sealing options together with stamped and formed contacts match durability with economy.



FEATURES

- Quick latch mechanism
- Universal mounting
- Choice of wire seal, gland nut & over moulding
- Standard sealing O-ring
- Constructed from Ultem®, a high temperature resistant composite material
- Meets UL94 Class V-0 flammability requirements
- Sealed against dust and moisture to IP68
- Available in 3 contact configurations

BENEFITS

- Positive location
- Flexible panel mounting of both halves
- Variety of options for maximum design-in flexibility
- Cost effective
- O-ring's match design requirements
- Can be washed, sterilised and autoclaved without performance degradation
- Withstands heat, dust and moisture

GENERAL SPECIFICATION

Crimp and PCB contacts, insert / extraction tools, dust caps and back fittings

Materials

Shell / Insulators: Temperature and corrosion resistant composite, Ultem®

Contacts: Copper Alloy / Gold Plated

Back Fitting Options:

Cable Compression Seal and/or Wire Seal
Overmould

Panel and Flange mount

Can be used with Conduit, Heat Shrink Tube/Boots

Contact Rating

Current Rating: 2 Way 13 Amps
7 Way 7.5 Amps
12 Way 5 Amps

Voltage: up to 1000 Vac (rms)

Insulation resistance: 1000 MΩ

Temperature Rating [connector]

-55°C to 150°C (The upper limit is the maximum internal Hot spot temperature resulting from the combination of ambient temperature and heating due to current)

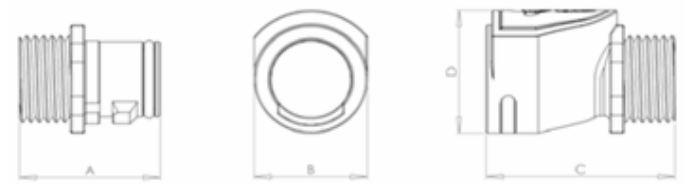


DEUTSCH

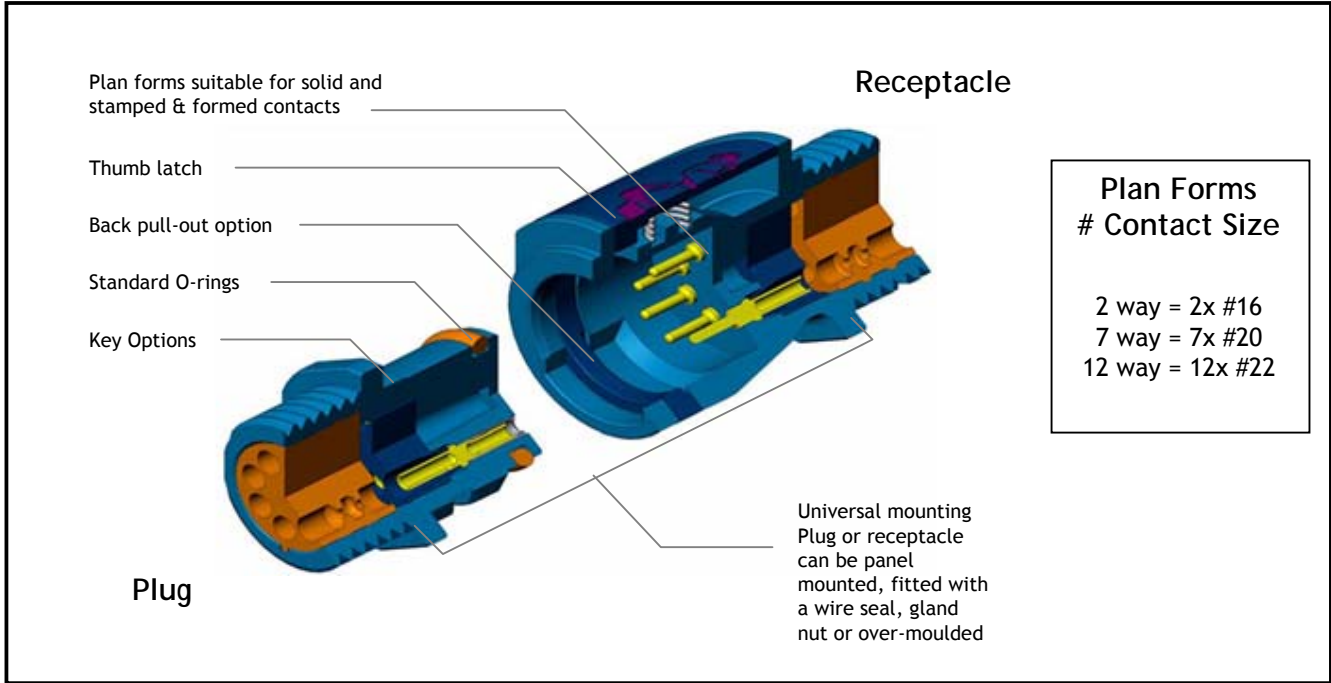
Dimensions (mm)

	A	B	C	D
QC2	25	16	33	22.5

Envelope dimensions are for reference only.
Contact Deutsch UK if more detail is required.



Construction



Ordering Information

Plug

Description	Part No.
200 series in/lp 2way #16	QC26-1602X
200 series in/lp 7way #20	QC26-2007X
200 series in/lp 12way #22	QC26-2212X

Receptacle

Description	Part No.
200 series in/lr 2way #16	QC24-1602X
200 series in/lr 7way #20	QC24-2007X
200 series in/lr 12way #22	QC24-2212X

Sealing Caps

Description	Part No.
pro-cap lowcost plug only	QC28
plug pro-cap with lanyard	QC38
recep pro-cap with lanyard	QC39

Contacts Solid

Description	Part No.
contacts #16 pins	6860-201-16278
contacts #20 pins	6860-201-20278
contacts #22 pins	6860-201-22278
contacts #16 sockets	6862-201-16278
contacts #20 sockets	6862-201-20278
contacts #22 sockets	6862-201-22278

PCB options made to specific customer specifications.

Contacts - Stamped and Formed

Description	Part No.
#20 Pin 24-28 AWG Reel 10K	6860-101-2013
#20 Skt 24-28 AWG Reel 10K	6862-101-2013
#20 Pin 20-24 AWG Reel 10K	6860-101-2023
#20 Skt 20-24 AWG Reel 10K	6862-101-2023

Stamped and formed contacts rated for 3 Amps - fully populated plan form
(5 Amps for two conductor applications)

Smaller pack quantities available upon request

Contact Insert/Extract Tools

Description	Part No.
insert/extraction tool #16	6757-201-1601
insert/extraction tool #20	6757-201-2001
insert/extraction tool #22	6757-201-2201

A step ahead in technology

Castleham Industrial Estate
2 Stanier Road, St Leonards on Sea
East Sussex TN38 9RP
England

Telephone: +44 (0) 1424 852722

Fax: +44 (0) 1424 855979

Email: industrialuk@deutsch.net

www.deutschuk.com

Subject to change without prior notification



DEUTSCH



X-ON Electronics

Largest Supplier of Electrical and Electronic Components

Click to view similar products for [Automotive Connectors](#) category:

Click to view products by [TE Connectivity](#) manufacturer:

Other Similar products are found below :

[003-018-000](#) [60403001](#) [60993906-B](#) [M902-2131](#) [M902-2161](#) [72.330.1035.1](#) [73.353.4028.0](#) [F119300-B](#) [F166900](#) [F258300-B](#) [F358300-B](#)
[F407400](#) [F444110](#) [F487000](#) [F509500B-B](#) [827153-1](#) [8N1515-32-24P](#) [9-1326729-8](#) [925474-1](#) [928905-1](#) [964562-4](#) [968782-1](#) [GT17SA-8DS-](#)
[HU](#) [98891-1012](#) [98947-1016](#) [12004147](#) [12004475-L](#) [12010290](#) [12010309-B](#) [12015454](#) [12020219-B](#) [12020308](#) [12041318-B](#) [12052225-L](#)
[12052466](#) [12059125](#) [12064869](#) [12004327-B](#) [12010503-B](#) [12015308](#) [12015384](#) [12015909](#) [1-21030-1](#) [12041254](#) [12041318](#) [12047946-B](#)
[12047957](#) [12047957-L](#) [12059473](#) [12066261](#)