

4

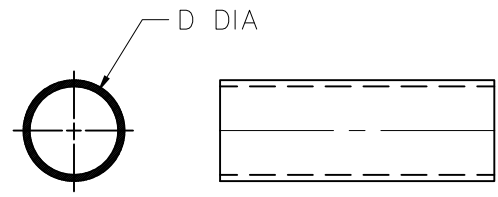
3

2

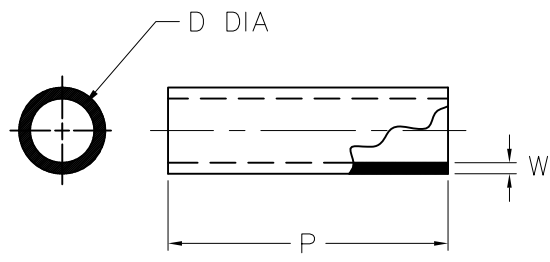
1

REVISIONS		
LTR	DESCRIPTION	DATE
R	REVISED PER ECO-11-003178	02/14/2011
S	REVISED DWG PER ECO-11-014498	07/13/2011
T	ADDED -87 TO TABLE PER ECO-14-004606	03/26/2014

D



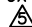
AS SUPPLIED



AFTER UNRESTRICTED RECOVERY

C

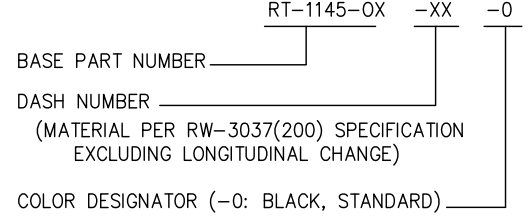
TABLE OF DIMENSIONS

PART DESCRIPTION	D		P REF b	W b	PART DESCRIPTION	D		P REF b	W b
	MIN a	MAX b				MIN a	MAX b		
RT-1145-OX-7-0	2.67	.75	2.50	.055 - .095	RT-1145-OX-30-0	1.00	.25	1.00	.033 - .053
RT-1145-OX-9-0	2.67	.75	1.50	.055 - .095	RT-1145-OX-32-0	2.00	.50	2.50	.045 - .085
RT-1145-OX-11-0	2.37	.63	6.00	.050 - .090	RT-1145-OX-34-0	2.00	.50	1.50	.045 - .085
RT-1145-OX-12-0	2.37	.63	2.50	.050 - .090	RT-1145-OX-35-0	2.00	.50	1.00	.045 - .085
RT-1145-OX-14-0	2.37	.63	1.50	.050 - .090	RT-1145-OX-36-0	2.67	.75	4.00	.055 - .095
RT-1145-OX-15-0	2.37	.63	1.00	.050 - .090	RT-1145-OX-37-0	2.37	.63	4.00	.050 - .090
RT-1145-OX-16-0	1.37	.38	3.00	.042 - .066	RT-1145-OX-38-0	2.00	.50	4.00	.045 - .085
RT-1145-OX-17-0	1.37	.38	2.50	.042 - .066	RT-1145-OX-39-0	1.37	.38	4.00	.042 - .066
RT-1145-OX-18-0	1.37	.38	2.00	.042 - .066	RT-1145-OX-40-0	1.25	.31	4.00	.035 - .059
RT-1145-OX-19-0	1.37	.38	1.50	.042 - .066	RT-1145-OX-41-0	1.00	.25	4.00	.033 - .053
RT-1145-OX-20-0	1.37	.38	1.00	.042 - .066	RT-1145-OX-75-0	1.50	.38	6.00	.042 - .066
RT-1145-OX-22-0	1.25	.31	2.50	.035 - .059	RT-1145-OX-76-0	1.25	.31	6.00	.035 - .059
RT-1145-OX-24-0	1.25	.31	1.50	.035 - .059	RT-1145-OX-87-0	2.00	.50	18.00	.045 - .085
RT-1145-OX-25-0	1.25	.31	1.00	.035 - .059	RT-1145-OX-97-0	1.75	.38	6.00	.042 - .066
RT-1145-OX-26-0	1.00	.25	3.00	.033 - .053	RT-1145-OX-98-0	2.00	.50	10.00	.045 - .085
RT-1145-OX-27-0	1.00	.25	2.50	.033 - .053	RT-1145-OX-100-0 (SEE  )	3.00	1.00	4.00	.090 - .130
RT-1145-OX-29-0	1.00	.25	1.50	.033 - .053	RT-1145-OX-132	0.38	0.13	2.00	.028 - .042
					RT-1145-OX-133	0.50	0.19	2.00	.028 - .042

B

NOTES:

- ALL DIMENSIONS ARE IN INCHES
- DIMENSIONS APPEARING IN TABLE ARE AS FOLLOWS:  
a \_ AS SUPPLIED  
b - AFTER UNRESTRICTED RECOVERY
- ADD DASH NUMBER AS SUFFIX TO BASE PART NUMBER TO SPECIFY ID AND LENGTH REQUIRED
- ORDERING INFORMATION:



 RT-1145-OX-100-0 HAS ADHESIVE S-1337 LINED ON INSIDE OF TUBING

Raychem Molded Parts

CUSTOMER DRAWING



TE Connectivity

UNLESS OTHERWISE SPECIFIED DIMENSIONS ARE IN INCHES. METRIC DIMENSIONS ARE IN BRACKETS.

DECIMAL TOLERANCES  
 .XXX ± 0.005 [0.13 mm]  
 .XX ± 0.01 [0.25 mm]  
 .X ± 0.1 [0.50 mm]

ANGLE TOLERANCE  
 .X ± 1 DEG.

REVISED  
UNGUYEN

APPROVED  
JKUSTER

THIRD ANGLE PROJECTION 

TITLE <b>TUBING, SHRINK OVER-EXPANDED</b>		
SIZE B	CODE IDENT. NO. 06090	DWG. NO. RT-1145-OX-XX-0

TYCO ELECTRONICS RESERVES THE RIGHT TO AMEND THIS DRAWING AT ANY TIME. USERS SHOULD EVALUATE THE SUITABILITY OF THE PRODUCT FOR THEIR APPLICATION.

© 2005-2014 Tyco Electronics Corporation. All rights reserved.

DO NOT SCALE THIS DRAWING

SHEET 1 OF 1

4

3

2

1

A

A

## X-ON Electronics

Largest Supplier of Electrical and Electronic Components

*Click to view similar products for [Heat Shrink Tubing and Sleeves](#) category:*

*Click to view products by [TE Connectivity](#) manufacturer:*

Other Similar products are found below :

[5685710001](#) [CR9960-000](#) [5734012004](#) [607381P039](#) [611112-000](#) [6284592002](#) [CX4711-000](#) [CZ1420-000](#) [D-306-38](#) [770-006S302](#) [770-010Y106W1](#) [770-018S103](#) [770-018S202W1](#) [770-018S205W1](#) [770-020S704W1](#) [770-020S705](#) [MFP-3/64"-Clear](#) [790-3012](#) [MHHT-4-15K2-G-104](#) [8003012003](#) [MIL-LT-1-1/2-4-SP](#) [MIL-LT-1-1/2-9-STK](#) [MIL-LT-1/2-2-STK](#) [MIL-LT-3-0-SP](#) [MIL-LT-3/32-0-SP](#) [MIL-LT-3/32-6-SP](#) [MIL-LT-3/4-4-STK](#) [MIL-LT-3/4-6-SP](#) [839602-000](#) [8423-6](#) [FP301-116-48"-Clear](#) [FP301-12-6"-Clear](#) [FP301-1/4-48"-White-Hdr](#) [FP301-18-48"-Black-Hdr](#) [FP301-1/8-6"-Black](#) [FP301-18-6"-Black-Bulk](#) [FP301-316-48"-Blue-Hdr](#) [912229N002](#) [R280637030](#) [HDCW-5515-1000](#) [HDT-0300-48A-BLACK](#) [HDT-0400-48A-Black](#) [HDT-0800-48A-RED](#) [HDT1100-48A-BLK](#) [HDT1500-48A-BLK](#) [HDT-2000-48A-Black](#) [RHW-70/20-1200/ADH-0](#) [DWP-125-0.450-4-55MM-CS879](#) [156082-000](#) [MT5500-3/8-X-SP](#)