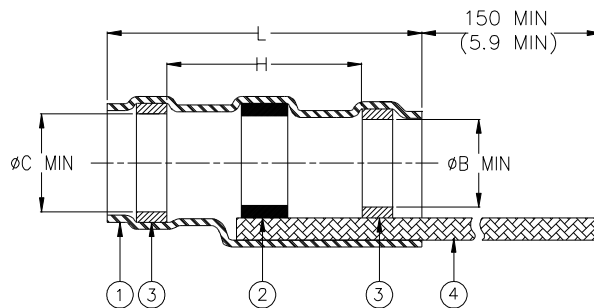


CUSTOMER DRAWING



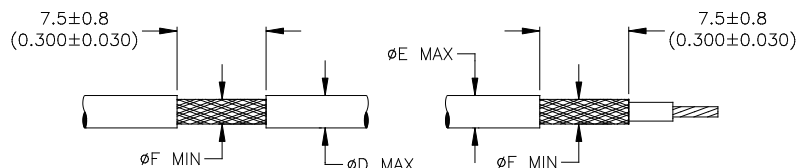
| Product Name | Component Dimensions | | | | | Shall Accommodate Cable with Dimensions | | |
|--------------|----------------------|---------------------|-----------------|-----------------|-----------------|---|-----------------|-----------------|
| | Ident. Code | L±1.75 (L±0.070) | Ø B min | Ø C min | H min | Ø E max | Ø F min | Ø D max |
| S03-01-R | S0301R | 16.50 (0.650) | 1.90 (0.075) | 2.65 (0.105) | 8.25 (0.325) | 2.65 (0.105) | 0.90 (0.035) | 1.90 (0.075) |
| S03-02-R | S0302R | 16.50 (0.650) | 2.65 (0.105) | 3.68 (0.145) | 8.25 (0.325) | 3.68 (0.145) | 1.40 (0.055) | 2.65 (0.105) |
| S03-03-R | S0303R | 16.50 (0.650) | 4.30 (0.170) | 5.08 (0.200) | 8.25 (0.325) | 5.08 (0.200) | 2.15 (0.085) | 4.30 (0.170) |
| S03-04-R | S0304R | 19.10 (0.750) | 5.95 (0.235) | 6.45 (0.255) | 8.25 (0.325) | 6.45 (0.255) | 3.30 (0.130) | 5.95 (0.235) |
| S03-05-R | S0305R | 19.10 (0.750) | 7.00 (0.275) | 7.60 (0.300) | 8.25 (0.325) | 7.60 (0.300) | 4.30 (0.170) | 7.00 (0.275) |

MATERIALS

- INSULATION SLEEVE: Heat-shrinkable, transparent blue, radiation cross-linked modified polyvinylidene fluoride.
- SOLDER PREFORM WITH FLUX AND THERMAL INDICATOR
 SOLDER: TYPE Sn63 per ANSI-J-STD-006.
 FLUX: TYPE ROL1 per ANSI-J-STD-004.
 THERMAL INDICATOR: Color change violet to colorless.
- MELTABLE RINGS: Stabilized thermoplastic. Color: blue.
- PRE-INSTALLED BRAID: Tin-plated copper strands. CMA 640.

APPLICATION

- These parts are designed to provide an environment protected shield termination on cables, rated for 125°C minimum, meeting the dimensional criteria listed and having tin or silver-plated shields and insulation compatible with the insert material. For compatible insulations, see MIL-S-83519/2 or consult TE Connectivity.
- When installed per TE Connectivity /Raychem process standard RCPS-100-70, assemblies will meet those requirements of TE Connectivity /Raychem Specification RT-1404 and MIL-S-83519/2, which do not require electrical testing while parts are immersed in water.
- Temperature range: -55°C to +150°C.
- Parts shall be marked with identification code per table. For best results prepare the cable as shown below.



| | | | | | |
|--|---|--|--|---------------------------|------------------|
| | | Raychem DEVICES | TITLE: SOLDERSLEEVE* DEVICES SHIELD TERMINATION WITH PRE-INSTALLED BRAID | | |
| Unless otherwise specified dimensions are in millimeters. [Inches dimensions are shown in brackets] | | | DOCUMENT NO.: | | |
| | | | S03-01/-05-R | | |
| TOLERANCES: 0.00 N/A 0.0 N/A 0 N/A | ANGLES: N/A ROUGHNESS IN MICRON | TE Connectivity reserves the right to amend this drawing at any time. Users should evaluate the suitability of the product for their application. | REV : E | DATE : 30-Mar-2020 | |
| PREPARED BY: M. FORONDA | CAGE CODE: 06090 | ECO: ECO-20-004510 | SCALE: NTS | SIZE: A | SHEET: 1 of 1 |

© 2020 TE Connectivity Ltd. Family of Companies. All Rights Reserved.

If this document is printed it becomes uncontrolled. Check for the latest revision.

*TE Connectivity, TE connectivity (logo), Raychem, SolderSleeve are trademarks

X-ON Electronics

Largest Supplier of Electrical and Electronic Components

Click to view similar products for [Solder Sleeves & Shield Tubing](#) category:

Click to view products by [TE Connectivity](#) manufacturer:

Other Similar products are found below :

[899170-000](#) [620040N001](#) [620069N003](#) [CTA-0050-01](#) [629624-000](#) [6500750004](#) [6501390002](#) [CX0781-000](#) [696396-000](#) [697080-000](#) [D-150-0331CS2902](#) [D-181-1222-90/9CS2800](#) [D-300-01CS1108](#) [715325N001](#) [908357N001](#) [982127-1](#) [D-436-0182CS246](#) [D-436-37CS2651](#) [D-436-61CS246](#) [D-436-82-CS2621](#) [D-659-0087](#) [E53797N001](#) [CB0213-000](#) [CB0219-000](#) [S200-2-01](#) [S200-4-00CS2904](#) [LSS-81-16AA-CS5575](#) [ST18-2-00](#) [FLX40-020-04-CS8651](#) [325534-000](#) [CTA-0025](#) [D-108-07CS436](#) [D-128-0010](#) [D-141-0108CS404](#) [D-144-41CS1371](#) [D-150-0231-NRCS2896](#) [D-150-1011](#) [395947-000](#) [427243N001](#) [B-801-18-01](#) [515-9](#) [C67137-000](#) [CB0220-000](#) [D-436-0185CS1102](#) [D-436-36CS2908](#) [D-436-37CS2908](#) [D-436-52CS246](#) [D-436-83CS2705](#) [D44133N001](#) [LSS-26-8A](#)