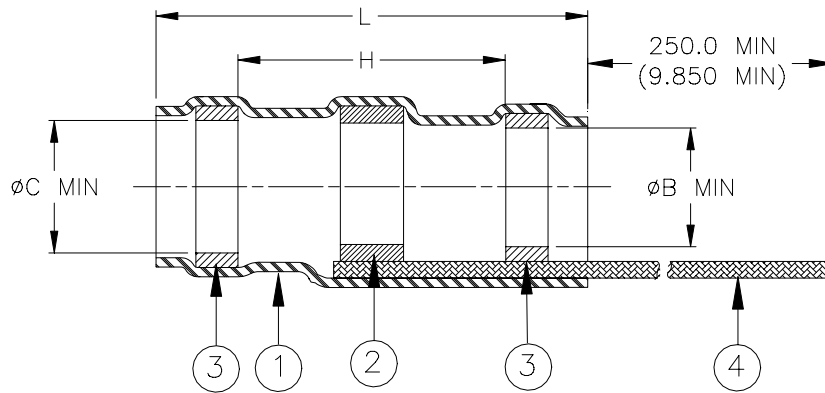


SPECIFICATION CONTROL DRAWING



Product Revision		Product Dimensions					Cable Dimensions		
Product Name		Ident. Code	L±1.75 (L±0.070)	øB min	øC min	H min	øE max	øF min	øD max
S03-11-R-100	N/C	SIZE1R	16.50 (0.650)	1.90 (0.070)	2.67 (0.105)	8.25 (0.325)	2.67 (0.105)	0.90 (0.035)	1.90 (0.070)
S03-12-R-100	N/C	SIZE2R	16.50 (0.650)	2.67 (0.105)	3.68 (0.145)	8.25 (0.325)	3.68 (0.145)	1.40 (0.055)	2.67 (0.105)
S03-13-R-100	N/C	SIZE3R	16.50 (0.650)	4.32 (0.170)	5.08 (0.200)	8.25 (0.325)	5.08 (0.200)	2.15 (0.085)	4.32 (0.170)
S03-14-R-100	N/C	SIZE4R	19.10 (0.750)	5.97 (0.235)	6.48 (0.255)	8.25 (0.325)	6.48 (0.255)	3.30 (0.130)	5.97 (0.235)
S03-15-R-100	N/C	SIZE5R	19.10 (0.750)	6.98 (0.275)	7.62 (0.300)	8.25 (0.325)	7.62 (0.300)	4.32 (0.170)	6.98 (0.275)

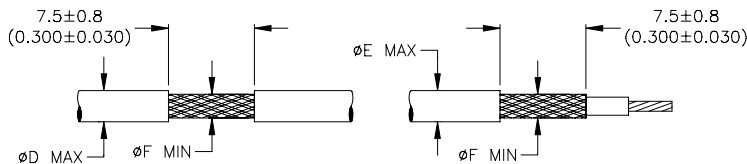
MATERIALS

- INSULATION SLEEVE: Heat-shrinkable, transparent blue, radiation cross-linked modified polyvinylidene fluoride.
- SOLDER PREFORM WITH FLUX AND THERMAL INDICATOR:
 SOLDER: TYPE Sn63 per ANSI/J-STD-006.
 FLUX: TYPE ROL1 per ANSI/J-STD-004.
 THERMAL INDICATOR: Color change violet to colorless.
- MELTABLE RINGS: Stabilized thermoplastic. Color: blue.
- PRE-INSTALLED BRAID: Silver-plated copper strands. CMA 640.

APPLICATION

- These parts are designed to provide an environment protected shield termination on cables, rated for 125°C minimum, meeting the dimensional criteria listed and having tin or silver-plated shields and insulation compatible with the insert material. For compatible insulations, see MIL-S-83519/2 or consult Tyco Electronics/Raychem.
- For installation procedure, consult Tyco Electronics/Raychem process standard RCPS-100-70.
- Temperature range: -55°C to +150°C.
- Parts shall be marked with identification code per table.

For best results, prepare the cable as shown:



		Tyco Electronics Corporation 300 Constitution Drive, Menlo Park, CA. 94025, U.S.A.				TITLE: SOLDERSLEEVE DEVICE SHIELD TERMINATION WITH SILVER-PLATED BRAID	
Unless otherwise specified dimensions are in millimeters. [Inches dimensions are shown in brackets]						DOCUMENT NO.: S03-1X-R-100	
TOLERANCES: 0.00 N/A 0.0 N/A 0 N/A		ANGLES: N/A ROUGHNESS IN MICRON		Tyco Electronics reserves the right to amend this drawing at any time. Users should evaluate the suitability of the product for their application.			
PROD. REV.: SEE TABLE		DOC. ISSUE: 0		DATE: 20-May-03			
PREPARED BY: mforonda		DCR NUMBER: D030278		REPLACES: N/A		CAGE CODE: 06090	
SCALE: ---		SIZE: A		SHEET: 1 of 1			

If this document is printed it becomes uncontrolled. Check for the latest revision.

X-ON Electronics

Largest Supplier of Electrical and Electronic Components

Click to view similar products for [TE Connectivity](#) manufacturer:

Other Similar products are found below :

[D38999/24FJ4AN](#) [570416-000](#) [CLTEQ-M81CE-SSRELAY-4-20V](#) [4-1195131-0](#) [650069-000](#) [SMD100-2](#) [358838-000](#) [CB-1022B-78](#)
[RM707012](#) [RP410012](#) [MMS42](#) [1-640426-8](#) [2EDL4CM](#) [DTS20W19-11PD-3028-LC](#) [RM202615](#) [NC6-P104-06](#) [MSPS103B](#) [DTS26F21-](#)
[41HE-LC](#) [DTS26F21-41AE](#) [DTS26F21-41PE-LC](#) [DTS26F21-11SE-3028-LC](#) [30DCB6](#) [1932144-1](#) [293545-4](#) [LVR125S](#) [MS27466T25F4PB](#)
[CKB-38-78010](#) [TR04AI-TINELLOCKRING](#) [1206SFF150F/63-2](#) [D38999/20JB35HA](#) [TE1500A2R2J](#) [D38999/20WC8BB](#) [DTS24F19-11SC-](#)
[3028-LC](#) [D38999/24WG11HA](#) [D38999/24WG11HN](#) [MS27467T21F11H](#) [DJT16E21-11HA](#) [MS27467T21F35J](#) [MS27467T21F11J](#)
[MS27467T21F16H-LC](#) [MS27467T21F35H](#) [MS27467T21F41H-LC](#) [1206SFH150F/24-2](#) [RP330024](#) [DJT16E21-11PA-LC](#) [DJT16E21-11HA-](#)
[LC](#) [DJT16E21-11AA](#) [MS27467T21B11JA](#) [DJT16E21-11JA](#) [MS27467T21B11JA-LC](#)