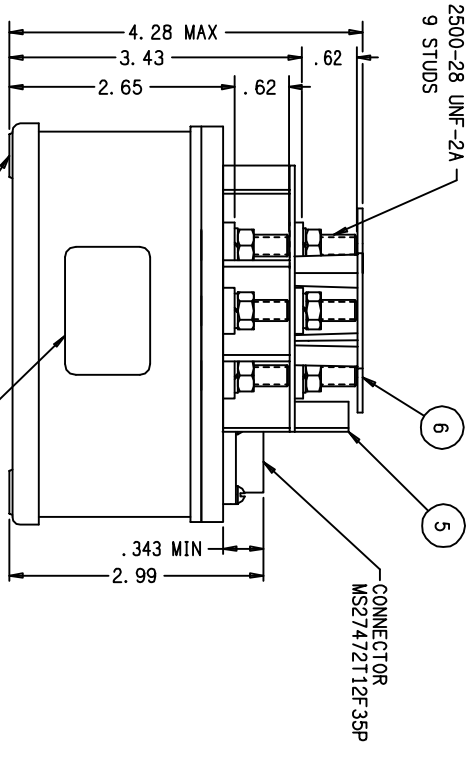
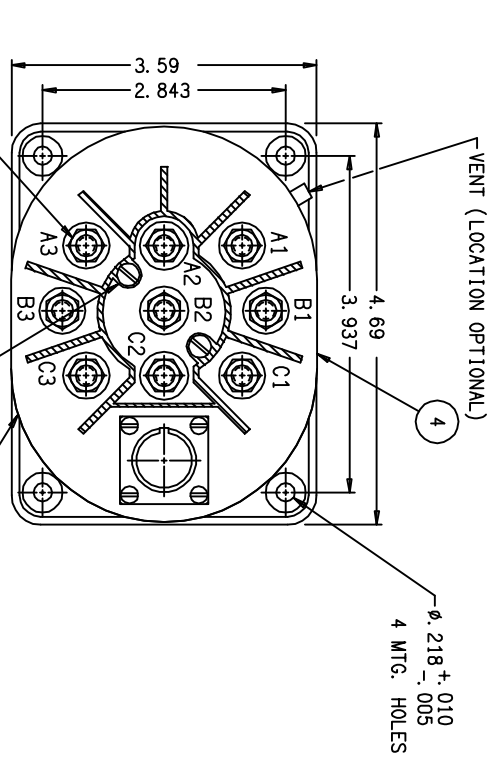
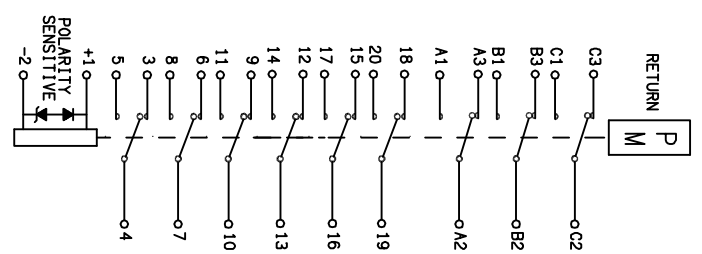


REV	DESCRIPTION	DATE	APPROVED
K 38541	PARTS LIST UPDATED	99/02/12	RS
L 43073	RELOCATED .62 DIM TO TOP OF TERMINAL	99/02/12	CC
M 09-0025474	ALIGN W/ GVI-CER-7218	09/06/02	DLM



FOUR MTG. HOLES SHALL BE PAINT FREE ON BOTH SIDES OF THE MOUNTING FLANGES FOR GROUNDING PURPOSES

CONFIGURATION MANAGED



CONSTRUCTION
 MAIN CONFIGURATION VOLTAGE (NOMINAL) 115/200 VAC 400HZ
 CURRENT RESISTIVE INDUCTIVE OVERLOAD (5 MIN) 60 AMPERES 75 AMPERES 175 AMPERES 600 AMPERES
 OVERLOAD (10 SEC) 60 AMPERES
 RUPTURE 600 AMPERES

AUX CONTACTS
 CONFIGURATION VOLTAGE (NOMINAL) 115/200 VAC 400/60 HZ
 CURRENT RESISTIVE INDUCTIVE LAMP LOW LEVEL 600 AMPERES

COIL DATA
 DUTY CYCLE 3PDT
 OPERATE VOLTAGE (MAX) 28 VDC
 OPERATE VOLTAGE (MIN) 18 VDC
 DROP-OUT VOLTAGE (MAX) 2-7 VDC
 HOLD VOLTAGE (MAX) 7 VDC
 COIL CURRENT (MAX) .40 AMPERES AT 20°C 28 VDC
 OPERATE TIMES AT 20°C 32 VDC
 AT -55°C 18 VDC
 PICKUP TIME 50 MS (MAX) 10 MS (MIN) AT 71°C
 TIMING (MAX) 25 MS (MAX) 40 MS (MAX) 100 MS (MAX)
 BOUNCE (MAX) 2 MILLISECONDS
 STAGGER TIME (MAX) 3 MILLISECONDS
 TRANSIENT SUPPRESSION 5 MILLISECONDS
 ALTITUDE (MAX) 50,000 FEET
 LIFE ELECTRICAL (MIN) 50,000 CYCLES
 LIFE MECHANICAL (MIN) 100,000 CYCLES
 WEIGHT (MAX) 2.7 LBS

ENVIRONMENTAL
 ALTITUDE (MAX) 50,000 FEET
 LIFE ELECTRICAL (MIN) 50,000 CYCLES
 LIFE MECHANICAL (MIN) 100,000 CYCLES
 WEIGHT (MAX) 2.7 LBS

QTY	PART OR IDENTIFYING NO	NOMENCLATURE OR DESCRIPTION	CAGE NO	DRAWING OR SPECIFICATION	MATERIAL OR NOTE
2	51804-040	LOCKWASHER #4 SPLIT			S. STEEL
2	51204-721	SCREW #4-40 X 1.50 PAN HD.			STEEL
1	SA120B10	PRIMARY ASSEMBLY			
1	TS018001	TOP SHIELD			
1	TS017020	BOTTOM SHIELD ASS'Y			
1	WD016001	SCHEMATIC			
1	16043-001	NAMEPLATE			BRONZE
2	51807-034	LOCKWASHER 1/4 SPLIT			BRASS
1	50407-074	NUT 1/4-28 X 3/8 X 3/16			

UNLESS OTHERWISE SPECIFIED DIMENSIONS ARE IN INCHES TOLERANCES IN

F. 06	±.010	±.5°
DR BY	CSC100/09/12	
CHK BY	CC 100/09/14	
ENGR	MRR 100/09/14	
MFG	MES100/09/15	
SIZE	CODE IDENT	
A	74063	

GULFSTREAM

Tyco Electronics
 1800 Hotchkiss Blvd., Suite 1175 N. Diamond Street, Mansfield, OH 44902

CONTACTOR, 3PDT
 60 AMP, 28 VDC COIL
 GASKET SEALED

DWG NO. SA120B

SCALE 1/2" SHEET

REF TE P/N 1616042-3

X-ON Electronics

Largest Supplier of Electrical and Electronic Components

Click to view similar products for [Contactors - Electromechanical category:](#)

Click to view products by [TE Connectivity manufacturer:](#)

Other Similar products are found below :

[6-1618400-7](#) [686-117111](#) [686-120111](#) [686-924](#) [686-948](#) [70-901](#) [70-914](#) [MB-3D-6](#) [MC-22A/4-AC120V](#) [8-1616943-9](#) [8-1672124-5](#)
[A40-30-10-84](#) [120-905](#) [A701U](#) [120-904](#) [1393132-9](#) [154-905](#) [154-912](#) [154-913](#) [154-915](#) [154-902](#) [154-910](#) [AVR743D](#) [B6-40-00-84](#) [B7-40-00-84](#) [1616017-5](#) [1616021-1](#) [MVDILM](#) [HP-11D-24](#) [P25-E5019-1](#) [P30C47A12D1-120](#) [P40C47A12D1-120](#) [P40P47D13P1-24-01](#) [CA7-12-10-240](#) [CA7-72-00-24Z](#) [90-162](#) [9-1393132-2](#) [2NC4F0222](#) [A275KXXV2-120VAC](#) [ACC338UMM20](#) [AF80-30-11-13](#) [SZ-B1](#) [CGC-9A-120](#) [3GC2H0M22](#) [3NC0T0A22](#) [3NC1Q0A22](#) [3NC2H0A22](#) [3NC2T0122/SE](#) [3TF3400-0BB4](#) [MC-12B-DC24V](#)