

REVISIONS

P	LTR	DESCRIPTION	DATE	DWN	APVD
	A	Initial Release	19DEC2019	RS	DV

**Slit Adhesive Sleeve
(S-1048)**

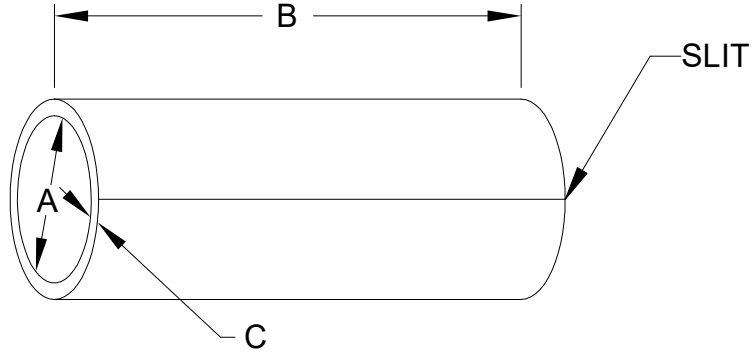


Table: Dimensions (inches)

Size	Extruded ID (A)	Cut Length (B)	Extruded Wall (C)
SAS-090-1.00-1048	.090 ± .005	1.000 ± .050	.024± .005
SAS-115-1.00-1048	.115 ± .005	1.000 ± .050	.032± .005
SAS-160-1.00-1048	.160 ± .005	1.000 ± .050	.032± .005
SAS-200-1.00-1048	.200 ± .005	1.000 ± .050	.035± .005
SAS-250-1.00-1048	.250 ± .010	1.000 ± .050	.035± .005
SAS-300-1.00-1048	.300 ± .010	1.000 ± .050	.067± .010

Color: Amber

Requirement: The Silt Adhesive Sleeves shall meet all the requirements of TE specification 108-20052.

THIS DRAWING IS UNPUBLISHED.
 ALL RIGHTS RESERVED.
 © COPYRIGHT - TE Connectivity Ltd.

DIMENSIONS: INCHES	DWN RS	15MAY2019	MATERIAL	-	FINISH	-		
	CHK HL	19DEC2019						
TOLERANCES UNLESS OTHERWISE SPECIFIED: 0 PLC ± - 1 PLC ± - 2 PLC ± - 3 PLC ± - 4 PLC ± - ANGLES ± -	APVD DV	19DEC2019					NAME SLIT ADHESIVE SLEEVE SAS-XXX-XXX-1048	
	PRODUCT SPEC	-	SIZE	CAGE CODE	DRAWING NO	RESTRICTED TO		
	APPLICATION SPEC	108-120052	A4	06090	Ⓒ SAS-XXX-XXX-1048	-		
	WEIGHT	-	CUSTOMER DRAWING			SCALE 1:1	SHEET 1 OF 1	REV A

X-ON Electronics

Largest Supplier of Electrical and Electronic Components

Click to view similar products for [Non-Heat Shrink Tubing and Sleeves](#) category:

Click to view products by [TE Connectivity](#) manufacturer:

Other Similar products are found below :

[601203-000](#) [CTA-0053](#) [8429-9](#) [8445-7.5](#) [8450](#) [120-116-1-1-09BE](#) [120-116-1-1-09BF](#) [120-116-1-1-09BP](#) [120-116-1-1-12BE](#) [120-116-1-1-12BP](#) [120-123-06](#) [120-123-10](#) [120-125-12BL](#) [120-125-12R](#) [120-125-20R](#) [120-126-09](#) [120-126-09BL](#) [120-126-12](#) [120-126-12BL](#) [120-126-52](#) [120-126-52BL](#) [120-104-12](#) [120-105-1-1-06BE](#) [120-105-1-1-06CE](#) [120-108-10B](#) [120-116-1-1-06BP](#) [120-116-1-1-10BP](#) [120-116-1-1-12BF](#) [120-123-12](#) [120-125-09](#) [120-125-12](#) [120-125-12Y](#) [120-125-52BL](#) [120-S002-12](#) [HC1B-7008-0375-0](#) [120-S001-09](#) [120-S002-09](#) [121-101-1-1-56BFC](#) [121-101-1-1-64BFC](#) [121-103-1-1-12BFTTH](#) [RAY-90-3.0\(100\)](#) [20675-2](#) [8S42-100FR-CS8184](#) [SAS-115-1-1048-1X](#) [SAS-160-1-1048-1X](#) [RAY-103-10.0\(100\)](#) [RAY-103-4.0\(100\)](#) [4627-S](#) [3-1991136-0](#) [561-SL1000PP](#)