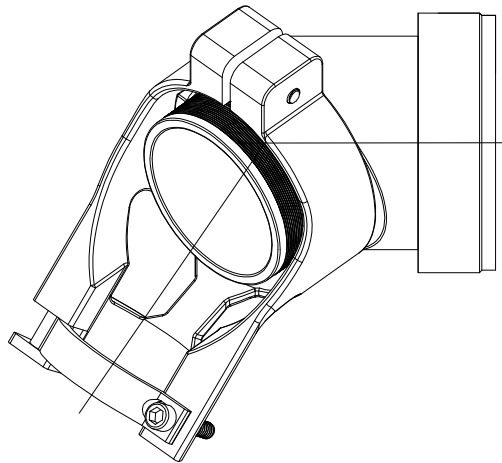


| REVISIONS | | | | |
|-----------|-----|---------------------------|-----------|-------|
| P | LTR | DESCRIPTION | DATE | APVD |
| | C | REVISED PER ECO-19-018565 | 09DEC2019 | JM AS |



SPIN-LOCK ADAPTER, SADDLE CLAMP

NOTES:


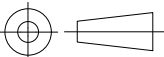
1. THIS PRODUCT IS DESIGNED TO TERMINATE A BRAIDED CABLE SHIELD TO A CONNECTOR AND PROVIDE STRAIN RELIEF.
2. SEE DRAWING "TR" FOR DETAIL ON TINEL-LOCK RING. RINGS ARE DESIGNED TO BE HEATED ELECTRICALLY. ALL RINGS ARE MARKED WITH THERMOCHROMIC PAINT WHICH CHANGES COLOR WHEN INSTALLATION TEMPERATURE IS REACHED.
3. ADAPTER TO BE PERMANENTLY MARKED WITH CODE IDENT. NO. AND PART NO. LESS RING DESIGNATOR (E.G.: 06090-XXXXXXX-XXXXX).
4. ADAPTER MATES TO MIL-C-81703, SERIES III, MS3424, MS3446, MS3464, MS3467, MS3468, CLASS E AND L.
5. ADAPTER MATES TO MIL-C-5015G, MS3400 SERIES, CLASS D, E, K, L, U & W; MS3400 MS3401, MS3404, MS3406, MS3450, MS3451, MS3454, MS3456, MS3470, MS3471, MS3472, MS3474, MS3475, MS3476. MIL-C-83723, SERIES II, CLASS A & L. MIL-C-83723, /14, /36, /37, /38, /39, /40, /41, /42, /43, /48, /49, /65, /66, /67, /68, /69, /70, /71, /72, /73, /74, /75, /76, /77, /78, /82, /83, /84, /85, /86, /87, /91, /92, /95, /97, /98, (MS3155 CONTROLLED INTERFACE).
6. INSTALLATION PROCEDURE MIP-103.
7. PERFORMANCE SPECIFICATION MPS-103.
8. FOR ADDITIONAL ORDERING INFORMATION SEE CH00-0250-019.

RELEASED FOR PUBLICATION

ALL RIGHTS RESERVED.

THIS DRAWING IS UNPUBLISHED.

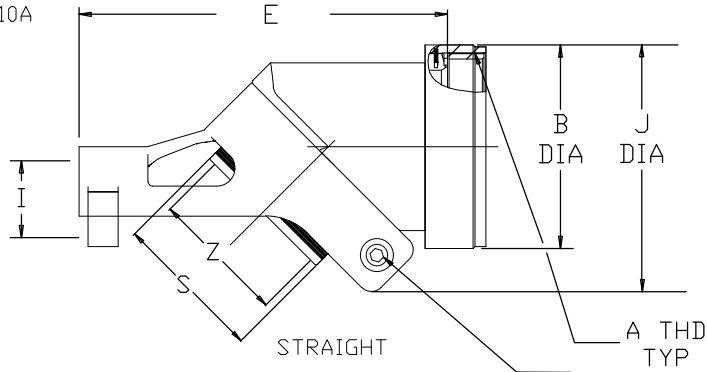
© COPYRIGHT - TE Connectivity Ltd.

| | | | | |
|---|---|-------------------|--|--------------------|
| DIMENSIONS: mm | DWN C.C.THOMAS | 18JUN2019 | MATERIAL - | FINISH - |
| | CHK O.CANO | 6-18-19 |  TE Connectivity | |
| TOLERANCES UNLESS OTHERWISE SPECIFIED: | APVD O.CANO | 6-18-19 | | |
| | 0 PLC ± - 1 PLC ± - 2 PLC ± - 3 PLC ± - 4 PLC ± - ANGLES ± - | PRODUCT SPEC - | APPLICATION SPEC - | SIZE A4 |
|  | WEIGHT 0 | | DRAWING NO C-SLC54 | RESTRICTED TO - |
| | CUSTOMER DRAWING | | | SCALE NTS |
| | | | | REV C |

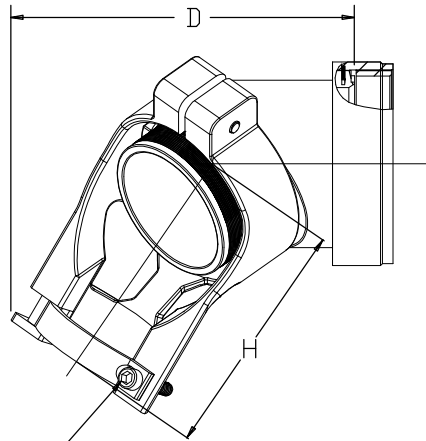
REVISIONS

| P | LTR | DESCRIPTION | DATE | DWN | APVD |
|---|-----|-------------|------|-----|------|
| - | - | SEE SHEET 1 | - | - | - |

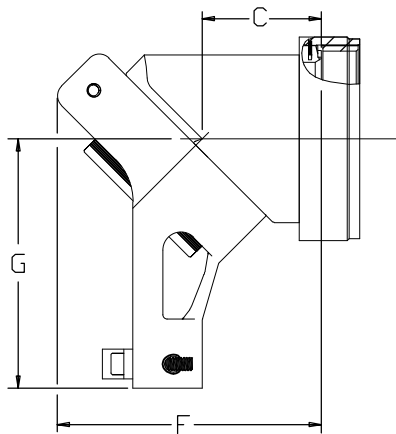
e.g SLC 54AB - 1610A



SCREW
4-40 UNC



CLAMP SCREW
SEE TABLE ON SHEET 3
FOR DETAILS




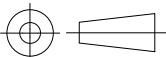
AT 90 DEGREE

RELEASED FOR PUBLICATION

ALL RIGHTS RESERVED.

THIS DRAWING IS UNPUBLISHED.

© COPYRIGHT - TE Connectivity Ltd.

| | | | | | | | | | | |
|--|---|--------------------------------------|------------------|--|-----------|--------|------------|---------|---------------|---|
| DIMENSIONS: mm | DWN | C.C.THOMAS | 18JUN2019 | MATERIAL | - | FINISH | - | | | |
| | CHK | O.CANO | 6-18-19 |  TE Connectivity | | | | | | |
| TOLERANCES UNLESS OTHERWISE SPECIFIED: | APVD | O.CANO | 6-18-19 | | | | | | | |
| 0 PLC ± - | PRODUCT SPEC | NAME SPIN LOCK ADAPTER CODE 54 | | | | | | | | |
| 1 PLC ± - | APPLICATION SPEC | | | | | | | | | |
| 2 PLC ± - | WEIGHT | 0 | SIZE | A4 | CAGE CODE | 06090 | DRAWING NO | C-SLC54 | RESTRICTED TO | - |
| 3 PLC ± - |  | | CUSTOMER DRAWING | | SCALE | NTS | SHEET | 2 OF 3 | REV | C |
| 4 PLC ± - | | | CUSTOMER DRAWING | | SCALE | NTS | SHEET | 2 OF 3 | REV | C |
| ANGLES ± - | | | | | | | | | | |

REVISIONS

| P | LTR | DESCRIPTION | DATE | DWN | APVD |
|---|-----|-------------|------|-----|------|
| - | - | SEE SHEET 1 | - | - | - |

TABLE I

| ORDER NO. | SHELL SIZE | | AVAILABLE ENTRY SIZES | | A METRIC CLASS THD 6H | B DIA MAX | C MAX DIM | D MAX DIM | E MAX DIM | F MAX DIM | CLAMP SCREW |
|-----------|------------|----------------|-----------------------|-------|-----------------------|-----------|--------------|--------------|--------------|--------------|-------------|
| | 4 | 5 | SMALL | LARGE | | | | | | | |
| 08 | | 8 & 8S | 04 | - | .500*-20 UNF | .610 | .61 [15.49] | 1.61 [40.89] | 1.73 [43.94] | 1.23 [31.24] | 1-64 UNC |
| 10 | | 10, 10S & 10SL | 04 | 06 | .625*-24 UNEF | .728 | .55 [13.97] | 1.62 [41.14] | 1.79 [45.46] | 1.24 [31.49] | 1-64 UNC |
| 12 | 7 | 12 & 12S | 06 | 08 | .750*-20 UNEF | .856 | .73 [18.54] | 1.80 [45.72] | 2.03 [51.46] | 1.42 [36.06] | 1-64 UNC |
| 14 | 12 | 14 & 14S | 08 | 10 | .875*-20 UNEF | .964 | .97 [24.63] | 2.10 [53.34] | 2.34 [59.43] | 1.77 [44.95] | 5-40 UNC |
| 16 | 19 | 16 & 16S | 10 | 12 | 1.000*-20 UNEF | 1.082 | 1.04 [26.41] | 2.20 [55.88] | 2.50 [63.5] | 1.92 [48.76] | 5-40 UNC |
| 18 | 27 | 18 | 10 | 14 | 1.062*-18 UNEF | 1.161 | .85 [21.59] | 2.30 [58.42] | 2.49 [63.24] | 1.80 [45.95] | 5-40 UNC |
| 20 | 37 | 20 | 12 | 16 | 1.188*-18 UNEF | 1.338 | 1.16 [29.46] | 2.50 [63.5] | 2.83 [71.88] | 2.16 [54.86] | 5-40 UNC |
| 22 | | 22 | 14 | 18 | 1.312*-18 UNEF | 1.466 | 1.14 [28.95] | 2.60 [66.04] | 3.09 [78.48] | 2.19 [55.62] | 5-40 UNC |
| 24 | | 24 | 16 | 20 | 1.438*-18 UNEF | 1.592 | 1.13 [28.70] | 2.80 [71.12] | 3.08 [78.23] | 2.23 [56.64] | 5-40 UNC |

TABLE II

| ORDER NO. | G MAX DIM | H MAX DIM | I MAX DIM | J MAX DIM |
|-----------|--------------|--------------|-------------|---------------|
| 08 | 1.12 [28.44] | 1.05 [26.67] | .34 [8.63] | 0.929 [23.59] |
| 10 | 1.24 [31.49] | 1.10 [27.94] | .32 [8.12] | 0.992 [25.19] |
| 12 | 1.30 [33.02] | 1.20 [30.48] | .38 [9.65] | 1.108 [28.14] |
| 14 | 1.37 [34.79] | 1.15 [29.21] | .48 [12.19] | 1.274 [32.35] |
| 16 | 1.46 [37.08] | 1.20 [30.48] | .56 [14.22] | 1.505 [38.22] |
| 18 | 1.64 [41.65] | 1.15 [29.21] | .50 [12.7] | 1.622 [41.19] |
| 20 | 1.67 [42.41] | 1.20 [30.48] | .59 [14.98] | 1.671 [42.44] |
| 22 | 1.95 [49.53] | 1.20 [30.48] | .59 [14.98] | 1.810 [45.97] |
| 24 | 1.95 [49.53] | 1.20 [30.48] | .64 [16.25] | 1.905 [48.38] |

TABLE III

| MAX ENTRY SIZE TYPE I | S DIA | Z +.010 -0.020 |
|-----------------------|--------------------------------|----------------|
| 04 | .376 [9.55] .370 [9.40] | .250 [6.35] |
| 06 | .501 [12.73] .495 [12.57] | .375 [9.53] |
| 08 | .626 [15.90] .619 [15.72] | .500 [12.70] |
| 10 | .752 [19.10] .742 [18.85] | .625 [15.88] |
| 12 | .877 [22.28] .867 [22.02] | .750 [19.05] |
| 14 | 1.002 [25.45] .991 [25.17] | .875 [22.23] |
| 16 | 1.127 [28.63] 1.116 [28.35] | 1.000 [25.40] |
| 18 | 1.252 [31.80] 1.241 [31.52] | 1.125 [28.58] |
| 20 | 1.377 [34.98] 1.366 [34.70] | 1.250 [31.75] |

RELEASED FOR PUBLICATION

ALL RIGHTS RESERVED.

TE Connectivity Ltd.

THIS DRAWING IS UNPUBLISHED.

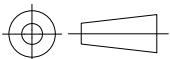


DIMENSIONS:

mm

TOLERANCES UNLESS OTHERWISE SPECIFIED:

- 0 PLC ± -
- 1 PLC ± -
- 2 PLC ± -
- 3 PLC ± -
- 4 PLC ± -
- ANGLES ± -



| | | | | | |
|--------------------------------|--------------------------------------|--------------------|-----------------------|--------------------|----------|
| DWN C.C.THOMAS 18JUN2019 | MATERIAL - | FINISH - | | | |
| CHK O.CANO 6-18-19 | TE Connectivity | | | | |
| APVD O.CANO 6-18-19 | | | | | |
| PRODUCT SPEC - | NAME SPIN LOCK ADAPTER CODE 54 | | | | |
| APPLICATION SPEC - | SIZE A4 | CAGE CODE 06090 | DRAWING NO C-SLC54 | RESTRICTED TO - | |
| WEIGHT 0 | CUSTOMER DRAWING | | SCALE NTS | SHEET 3 OF 3 | REV C |

X-ON Electronics

Largest Supplier of Electrical and Electronic Components

Click to view similar products for [Circular MIL Spec Backshells](#) category:

Click to view products by [TE Connectivity](#) manufacturer:

Other Similar products are found below :

[5M2919-3DW](#) [5M2920-3CW](#) [5M2953-1HW](#) [60-036152-022](#) [610HS012M15](#) [M28840/504WA](#) [M28840/805WB](#) [M28840/809WA](#)
[M28840/815WA](#) [M28840/816WA](#) [627AS017M14](#) [62GB5851608S](#) [655HS002NF11](#) [CW3703-000](#) [CW3899-000](#) [M85049/10-134S](#)
[M85049/10-17S](#) [M85049/10-33S](#) [M85049/10-94W](#) [M85049/11-09W](#) [M85049/11-28N](#) [M85049/11-37N](#) [M85049/11-53N](#) [M85049/11-63N](#)
[M85049/118-20W](#) [M85049/124-23W](#) [M85049/124S09W](#) [M85049/126S23W](#) [M850491712W02](#) [M85049/1720N04B](#) [M85049/1817N06](#)
[M850491819W03](#) [M85049/1821W05C](#) [M85049/1825W06C](#) [M85049/1919N05](#) [M85049/1919W04](#) [M850491919W07](#) [M85049/23-59W](#)
[M85049/23-74W](#) [M8504924-5W](#) [M85049/24-71N](#) [M85049/25-47N](#) [M85049/25-94W](#) [M85049/27S12N](#) [M8504938-13S](#) [M85049/38-19S](#)
[M85049/39-11S](#) [M85049/39-17S](#) [M85049/39-9S](#) [M85049/3W4A2](#)