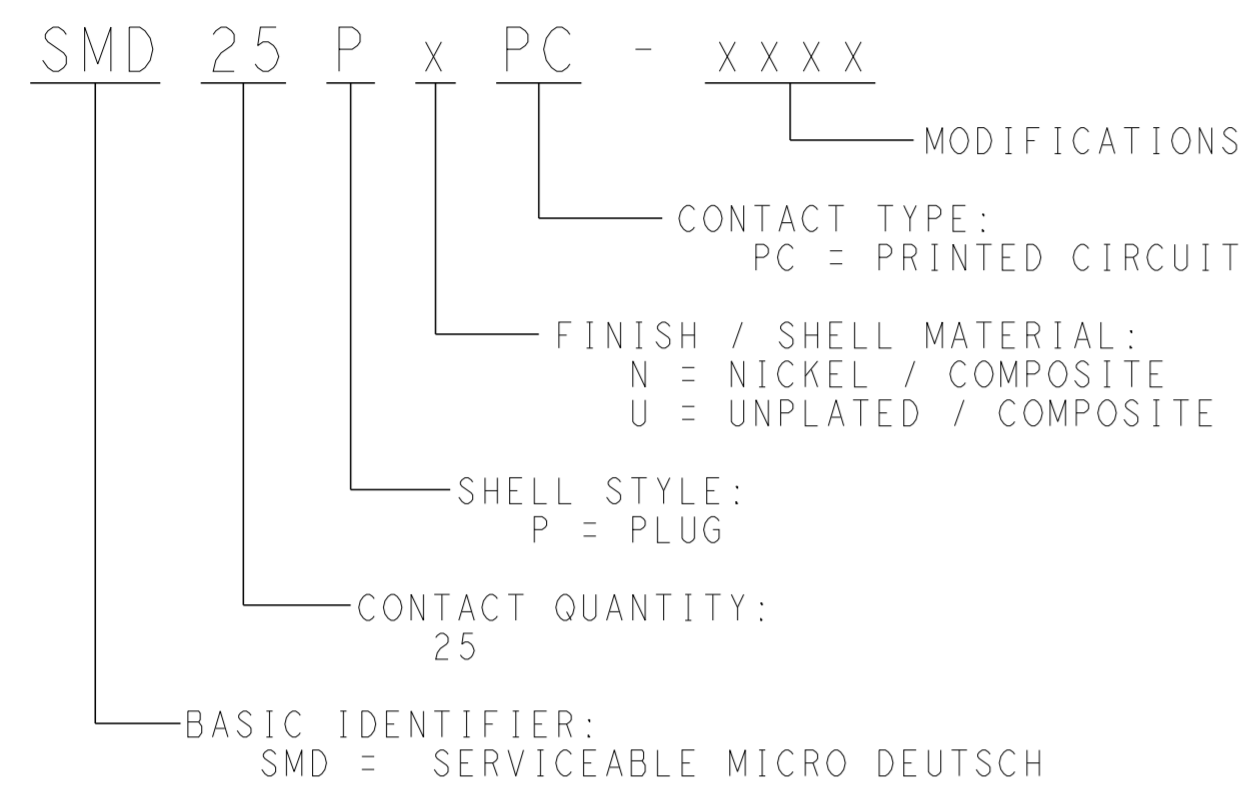


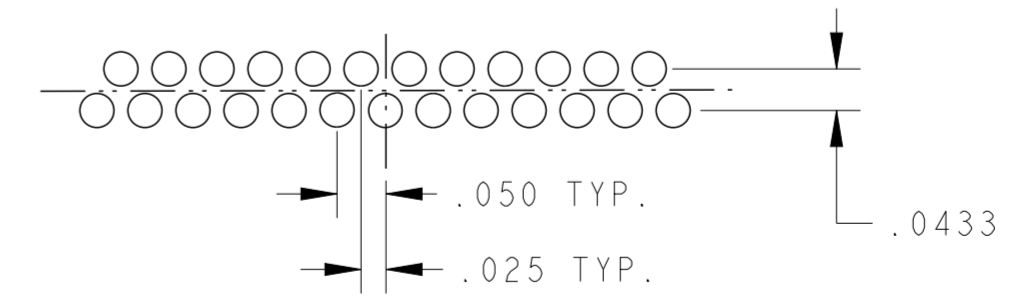
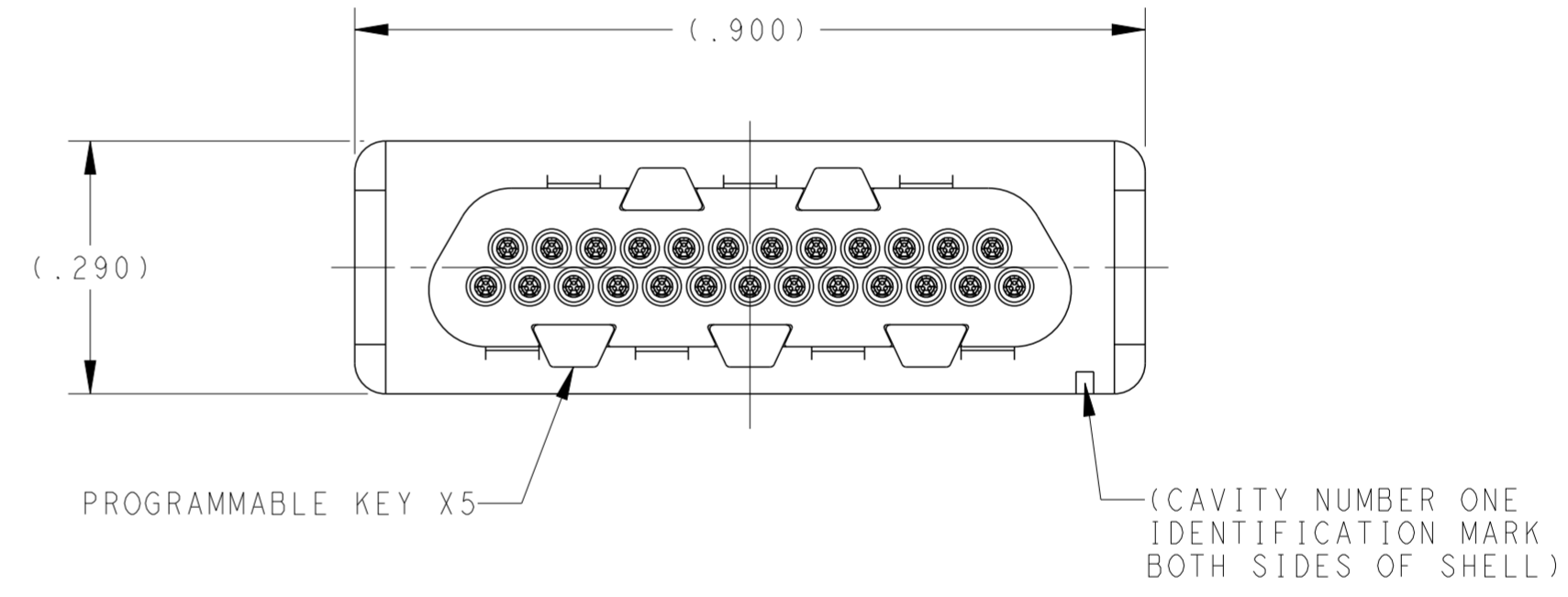
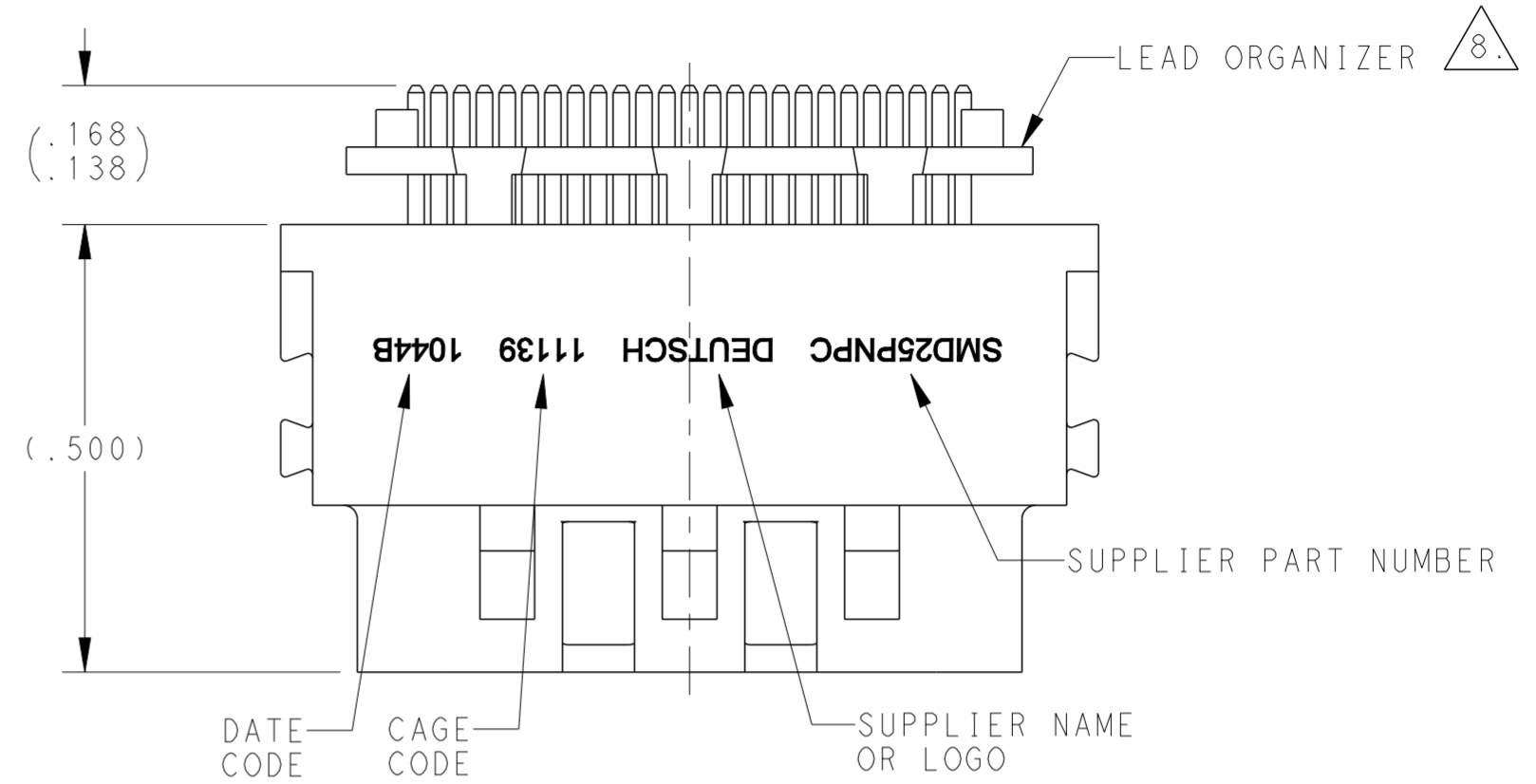
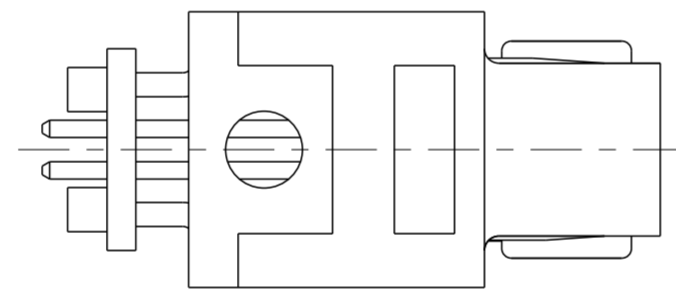
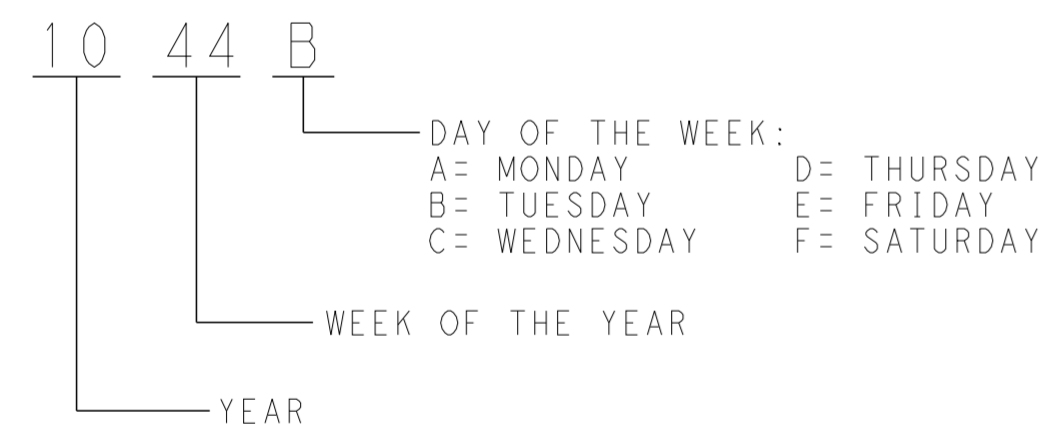
T.E. PROPRIETARY AND CONFIDENTIAL
 This drawing contains proprietary information that shall not be disclosed, duplicated nor used in whole or in part for any purpose other than to evaluate this drawing.

REVISIONS				
P	LTR	DESCRIPTION	DATE	APVD
A		REVISED PER E.O D0196	120831	JH
B		REVISED PER ECO-16-012131	160721	BN AR

PART NUMBER BREAKDOWN



DATE CODE FORMAT



RECOMMENDED CIRCUIT BOARD CUT-OUT

NOTES CONTINUED ON SHEET TWO

- MATERIAL / FINISH:
 SHELL: RIGID COMPOSITE / SEE PART NUMBER BREAKDOWN
 INSERT: RIGID: COMPOSITE / NATURAL
 CONTACTS: COPPER ALLOY / GOLD
 KEYS: RIGID COMPOSITE / NATURAL
 - DIMENSIONS ARE IN INCHES
- NOTES: UNLESS OTHERWISE SPECIFIED

THIS DRAWING IS A CONTROLLED DOCUMENT.		DWN 21 JUL 2016 A RASMUSSEN	STE TE Connectivity	
DIMENSIONS: inches		CHK W ALLEN 110621		
TOLERANCES UNLESS OTHERWISE SPECIFIED:		APVD A RENGIFO 120904	NAME CONNECTOR, PLUG IN-LINE, P.C. MOUNTING SMD SERIES, SIZE 25	
0 PLC ±.1		PRODUCT SPEC	SIZE CAGE CODE DRAWING NO RESTRICTED TO	
1 PLC ±.01		APPLICATION SPEC	A211139 C-SMD25PxPC_ENV	
2 PLC ±.005		WEIGHT	SCALE 5:1 SHEET 1 OF 2 REV B	
3 PLC ±.0005		CUSTOMER DRAWING		
4 PLC ±.0005 ±.5°				
MATERIAL FINISH				
SEE NOTE 2				

THIS DRAWING IS UNPUBLISHED. RELEASED FOR PUBLICATION 2016
 © COPYRIGHT 2016 BY TE CONNECTIVITY ALL RIGHTS RESERVED.

T.E. PROPRIETARY AND CONFIDENTIAL
 This drawing contains proprietary information that shall not be disclosed, duplicated nor used in whole or in part for any purpose other than to evaluate this drawing.

REVISIONS				
P	LTR	DESCRIPTION	DATE	APVD
		SEE SHEET 1		



- 8. LEAD ORGANIZER TO REMAIN ON PART DURING PCB MOUNTING AND SEATS WITHIN CONNECTOR BODY AFTER MOUNTING.
- 7. MARKING CONTAINS AT MINIMUM: DEUTSCH PART NUMBER, DEUTSCH NAME OR SYMBOL, CAGE CODE AND DATE CODE. MARKING MAY NOT APPEAR EXACTLY AS ILLUSTRATED.
- 6. CONSULT FACTORY FOR AVAILABILITY.
- 5. PROGRAMMABLE KEYS (5 EA) SHIPPED LOOSE.
- 4. FOR ARRANGEMENT PATTERN, SEE MIL-DTL-83513/3.
- 3. PERFORMANCE DATA:
 - OPERATING TEMPERATURE: -55°C TO +125°C
 - WIRE SIZE: 25 AWG SOLID WIRE
 - BLIND MATEABLE WITH SMD25Rxxx
 - CONTACT ENGAGEMENT AND SEPARATION FORCES: IN ACCORDANCE WITH MIL-DTL-83513
 - CONTACT RESISTANCE: 7 MILLIOHMS MAXIMUM INITIAL (CRIMP-TO-CRIMP)
 - CANTACT RETENTION: 3 POUNDS MINIMUM
 - CRIMP TENSILE STRENGTH: IN ACCORDANCE WITH MIL-DTL-83513
 - CURRENT RATING: 2.5 AMPS (CONTINUOUS) WHEN TESTED IN ACCORDANCE WITH MIL-DTL-83513
 - DURABILITY: IN ACCORDANCE WITH MIL-DTL-83513
 - DWV AT SEA LEVEL: 500 VAC
 - EMI SHIELDING EFFECTIVENESS WHEN TESTED IN ACCORDANCE WITH MIL STD-13444 METHOD 3008:
 - 50 DB ATTENUATION AT 1GHZ
 - 35 DB ATTENUATION AT 2GHZ
 - 30 DB ATTENUATION AT 4GHZ
 - 25 DB ATTENUATION AT 6GHZ
 - ENDURANCE AT TEMPERATURE: WHEN TESTED IN ACCORDANCE WITH EN2591-301 METHOD B DURATION 1000 HOURS
 - FLUID RESISTANCE: IN ACCORDANCE WITH EN2591-315 WHEN TESTED WITH PHASE I AMBIENT TEMPERATURE AND THIRD PHASE PER EN3909 TABLE I
 - HUMIDITY: IN ACCORDANCE WITH MIL-DTL-83513
 - INSERT RETENTION: IN ACCORDANCE WITH MIL-DTL-83513
 - INSULATION RESISTANCE: IN ACCORDANCE WITH MIL-DTL-83513
 - LOW SIGNAL LEVEL CONTACT RESISTANCE: IN ACCORDANCE WITH MIL-DTL-83513
 - MAGNETIC PERMEABILITY: IN ACCORDANCE WITH MIL-DTL-83513
 - MARKING PERFORMANCE: IN ACCORDANCE WITH MIL-DTL-83513
 - SALT MIST: 48 HOURS FOR EXPOSED CONTACTS, 500 HOURS FOR REMAINING ITEMS, WHEN TESTED IN ACCORDANCE WITH EN2591-307
 - SHOCK: 30G (HALF-SINE) WHEN TESTED IN ACCORDANCE WITH EIA-364-27 TEST CONDITION H
 - VIBRATION: 10G (10 HZ TO 500 HZ) WHEN TESTED IN ACCORDANCE WITH EIA-364-28 TEST CONDITION II DURATION PER CONDITION IV

NOTES CONTINUED FROM SHEET ONE

THIS DRAWING IS A CONTROLLED DOCUMENT.		DWN A. RASMUSSEN	110505	TE Connectivity	
DIMENSIONS: inches		CHK M. ALLEN	110621		
TOLERANCES UNLESS OTHERWISE SPECIFIED:		APVD A. RENGIFO	120904	NAME CONNECTOR, PLUG IN-LINE, P.C MOUNTING SMD SERIES, SIZE 25	
		PRODUCT SPEC		SIZE A2	
0 PLC ± 1 PLC ±1 2 PLC ±01 3 PLC ±005 4 PLC ±0005 ANGLES ±5° FINISH		APPLICATION SPEC		CAGE CODE 11139	
MATERIAL SEE PAGE 1 SEE PAGE 1		WEIGHT -		DRAWING NO SMD25P x PC	
CUSTOMER DRAWING				SCALE 5:1	SHEET 2 OF 2
				RESTRICTED TO -	REV B

X-ON Electronics

Largest Supplier of Electrical and Electronic Components

Click to view similar products for [Rectangular Mil Spec Connectors](#) category:

Click to view products by [TE Connectivity](#) manufacturer:

Other Similar products are found below :

[891-011-15SA2-BSST](#) [CTS-S16/16](#) [65002-062](#) [CY4602-000](#) [732-8020-01](#) [77058-22-55PN](#) [81542-20](#) [86.030.0053.0](#) [1241346-1](#) [RM252-020-311-2900](#) [DMC-M 08-16 SA](#) [1589051-4](#) [MSO34MPK1E1](#) [BACC65CAMA](#) [BACC65CP1PN](#) [BACI10BC0816PNBA](#) [HSB-D4S03DM222X](#) [2217548-1](#) [891-006-9PS-BST1T](#) [891-009-15SA2-BRT1T](#) [27963-20T12](#) [SIM2N40NC3](#) [SIM2S100A](#) [1604996-2](#) [SMD25PN90L-4055](#) [1900ND08S1B00A](#) [22628-10-6P-791](#) [33526M11-08PD](#) [RE04-212S](#) [M32139/03-G05SN](#) [CTD160E01F-6148](#) [CTJ112E03B](#) [CTJ122E02D-8000](#) [CTJ-3D-12](#) [CTJ920E06N-513](#) [CTJ920E12N-513](#) [CTL-16-090](#) [RM300-000-581-0000](#) [CY4600-000](#) [CY4601-000](#) [38111-14-15SN](#) [38112-14-15PN](#) [MMA23-0111R1](#) [MMD25-0071P1](#) [33516062020](#) [33526M11-08PE](#) [DMC-M99-01AN](#) [Y59113WE20PNV00300](#) [ZPF000000000106310](#) [105979-31](#)