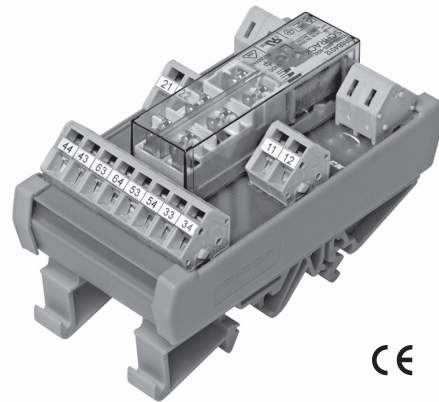


Force Guided Relay on DIN-rail SR6 Z

- 6 pole relay with force guided contacts according to EN50205
- DIN rail mounting
- AC / DC input

Typical applications
contact monitoring in railway, elevator and machine controls



Approvals

relay SR6: VDE, UL, TUV, CQC
module SR6Z: CE
Technical data of approved types on request

Contact Data

| | |
|--|---|
| Contact arrangement | 3 form A (NO) and 3 form B (NC), 4 form A (NO) and 2 form B (NC), 5 form A (NO) and 1 form B (NC) |
| Rated voltage | 250VAC |
| Max. switching voltage | 250VAC |
| Rated current | 8A |
| Contact material | AgSnO ₂ |
| Contact style | single contact, force guided type A according to EN 50205 |
| Min. recommended contact load | 5V, 10mA |
| Initial contact resistance | ≤100mΩ at 1A, 24VDC ≤20Ω at 10mA, 5VDC |
| Frequency of operation, with/without load | 6/150min ⁻¹ |
| Contact ratings, IEC60947-5-1, on 1 form A (NO) contact | AC15-5A DC13-6A |
| Mechanical endurance | 10x10 ⁶ operations |

Coil Data

| | |
|--|---|
| Coil voltage range | 6 to 115 VAC/VDC, 230VAC |
| DC energizing voltage U _{rtid} | 6, 12, 18, 21, 24, 36, 40, 48, 60, 115VDC |
| AC/DC energizing voltage U _{rtid} | 24, 115VAC/VDC |
| AC energizing voltage U _{rtid} | 230VAC |
| Operative range | 90 to 110% of U _{rtid} |
| Release voltage (+23°C) | 10% of U _{rtid} |
| Max. coil power DC versions | 1200mW |
| Max. system power AC/DC versions | 2400mVA |

Insulation Data

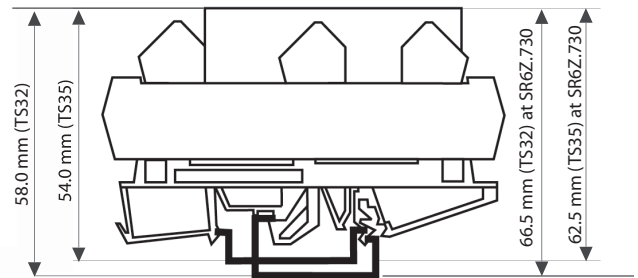
| | |
|--|----------------------|
| Initial dielectric strength | |
| between open contacts | 1000V _{rms} |
| between contact and coil | 3000V _{rms} |
| between adjacent contacts | 2000V _{rms} |
| Clearance/creepage | |
| between open contacts | microdisconnection |
| between contact and coil | ≥5.5/5.5mm |
| between adjacent contacts | ≥2,8 /2.8mm |
| Insulation to EN 50178, type of insulation | |
| between contact and coil | reinforced |
| between adjacent contacts | basic |

Other Data

Material compliance: EU RoHS/ELV, China RoHS, REACH, Halogen content refer to the Product Compliance Support Center at www.te.com/customer-support/rohssupportcenter

| | |
|-----------------------------------|----------------------------|
| Ambient temperature | |
| for mounting/handling | 0 to 40°C |
| in operation | -25 to 50°C |
| SR6ZC 730 only | -25 to 40°C |
| Terminal type | screwless clamp connectors |
| Wire cross section | |
| solid wire | 2.5mm ² |
| stranded wire | 2.5mm ² |
| stranded wire with bootlace crimp | 1.5mm ² |
| Mounting position | any |
| Weight | 90g |
| Packaging unit | 2 |

Dimensions



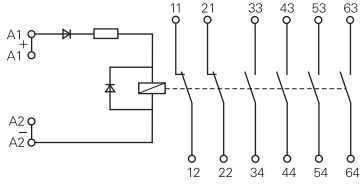
Module width 46 mm
Module length 87 mm

Fit onto mounting rails according to
DIN EN 60175

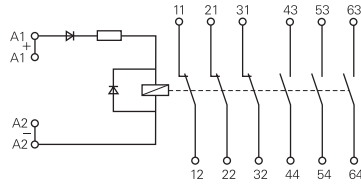
Force Guided Relay on DIN-rail SR6 Z (Continued)

Terminal assignment

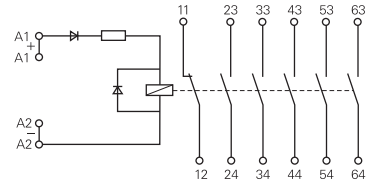
DC module, 4 NO+2 NC version



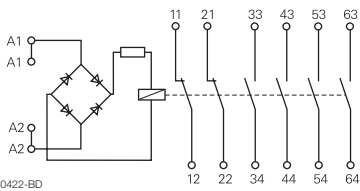
DC module, 3 NO+3 NC version



DC module, 5 NO+1 NC version

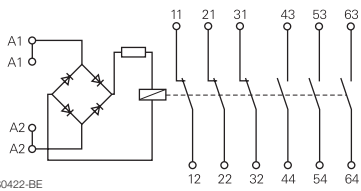


AC/DC module, 4 NO+2 NC version



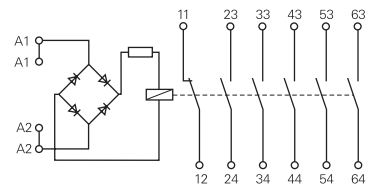
S0422-BD

AC/DC module, 3 NO+3 NC version



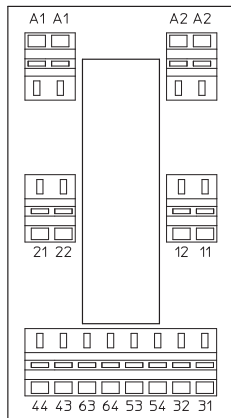
S0422-BE

AC/DC module, 5 NO+1 NC version

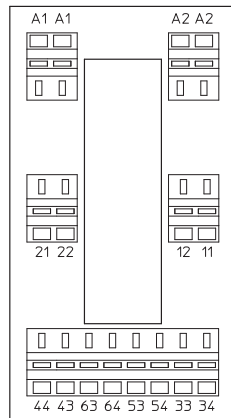


S0422-BF

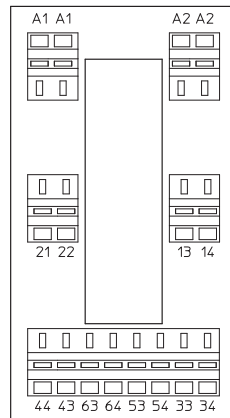
SR6ZA...



SR6ZB...



SR6ZC...



S6Z8004

Product code structure

Typical product code **SR6Z B 024**

Type
SR6Z Relay with force guided contacts on DIN-rail SR6 Z

- Contact configuration**
- A** 3 form A (NO) + 3 form B (NC) contacts
 - B** 4 form A (NO) + 2 form B (NC) contacts
 - C** 5 form A (NO) + 1 form B (NC) contacts

Coil
DC Coil code = rated coil voltage (e.g. 024=24 VDC)
AC/DC coil code: 524=24 VAC/VDC, 615=115 VAC/VDC
AC coil code: 730=230 VAC

Other types on request

| Product code | Type | Contact configuration | Contact material | Coil | Part number |
|--------------|---------------------------|-----------------------|--------------------|------------|-------------|
| SR6ZA024 | 6-pole | 3 form A + 3 form B | AgSnO ₂ | 24VDC | 7-1415033-1 |
| SR6ZA524 | force guided relay module | 3 NO + 3 NC contacts | | 24VAC/VDC | 9-1415059-1 |
| SR6ZA615 | | | | 115VAC/VDC | 1415060-1 |
| SR6ZA730 | | | | 230VAC | 1-1415060-1 |
| SR6ZB024 | | 4 form A + 2 form B | | 24VDC | 5-1415033-1 |
| SR6ZB524 | | | | 24VAC/VDC | 2-1415060-1 |
| SR6ZB615 | | | | 115VAC/VDC | 6-1415046-1 |
| SR6ZB730 | | | | 230VAC | 3-1415060-1 |
| SR6ZC024 | | 5 form A + 1 form B | | 24VDC | 3-1415042-1 |
| SR6ZC524 | | | | 24VAC/VDC | 4-1415060-1 |
| SR6ZC615 | | | | 115VAC/VDC | 5-1415060-1 |
| SR6ZC730 | | | | 230VAC | 6-1415060-1 |

X-ON Electronics

Largest Supplier of Electrical and Electronic Components

Click to view similar products for [Safety Relays](#) category:

Click to view products by [TE Connectivity](#) manufacturer:

Other Similar products are found below :

[7-1618103-5](#) [1351-1X](#) [1618082-4](#) [1618111-1](#) [C200HDA003](#) [C200HMR432](#) [C200HMR832](#) [C200HMR833](#) [C28PEDRA](#) [20-050-36X](#)
[C500ETL01](#) [C500OD415CN](#) [2-1618068-0](#) [9-1618103-2](#) [SP10-ETL01](#) [22-060X](#) [C200HNC112](#) [C200HOD214](#) [C500CN812N](#) [4NK0AQY](#)
[1100X](#) [1100-42X](#) [V23050A1012A551](#) [6-1618082-4](#) [7-1618103-6](#) [WTD-101X](#) [SP16DRD](#) [SP16DRA](#) [C500-CE243](#) [C500-IDS02-V1](#)
[607.5111.020](#) [DOLD 48173](#) [CS AR-02V024](#) [CS AR-20V024](#) [CS AR-22V024](#) [CS AR-22V230](#) [CS AR-46V024](#) [750136](#) [777512](#) [PSR-MS21-](#)
[1NO-1DO-24DC-SC](#) [600PSR-165/300-CU](#) [SR6V6K18](#) [SR4M4005](#) [BPS 36-1](#) [BP34 - 101057553](#) [2TLA010033R3000](#) [2TLA010033R2000](#)
[2TLA010033R0000](#) [2TLA010028R1000](#) [2TLA010017R0100](#)