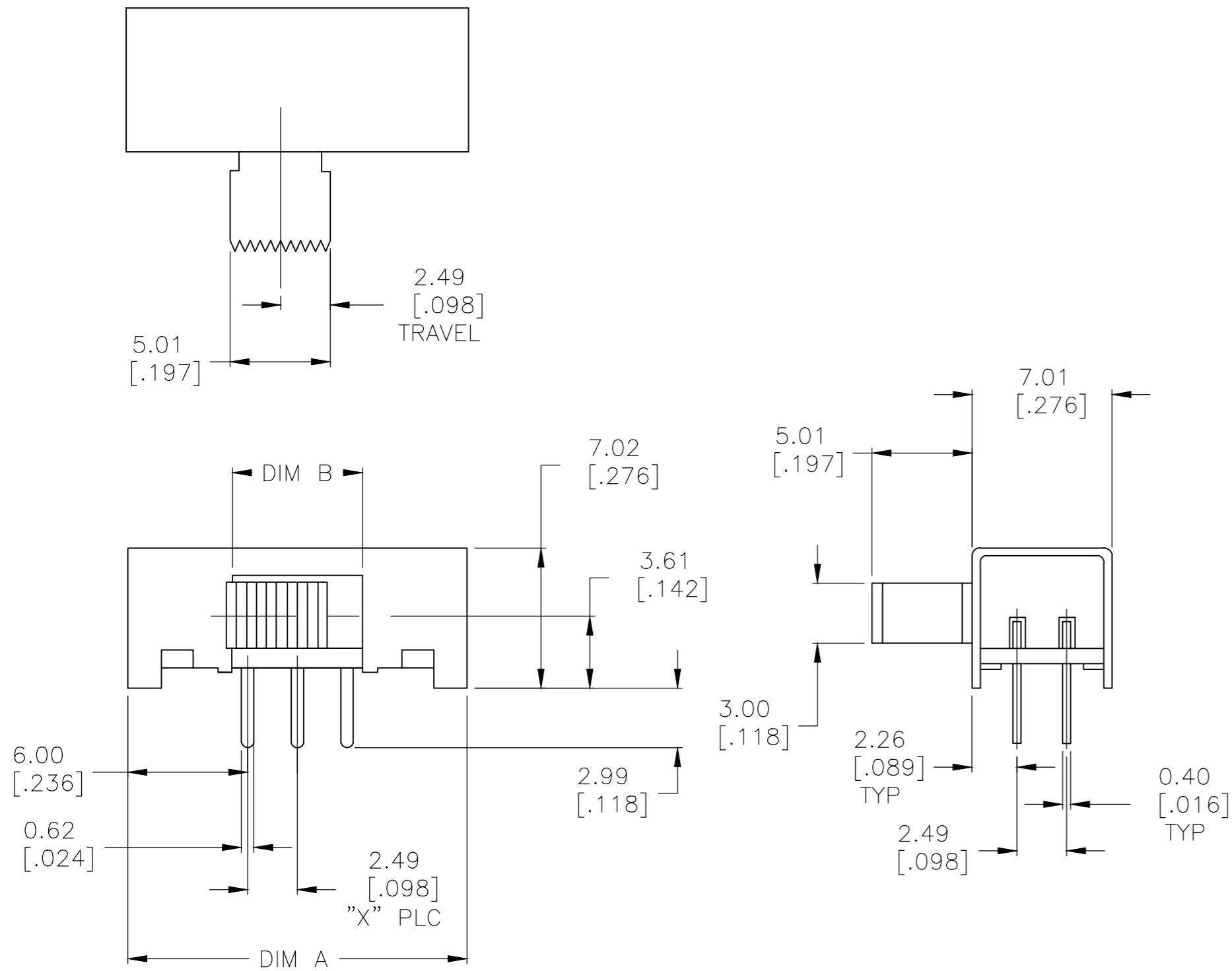


REVISIONS					
P	LTR	DESCRIPTION	DATE	DWN	APVD
A1		ECO-06-029077	06FEB2007	RB	MS
A2		REVISED PER ECO-16-018096	29MAY2017	RK	PO



SPECIFICATIONS:  
 MAKE-BEFORE-BREAK

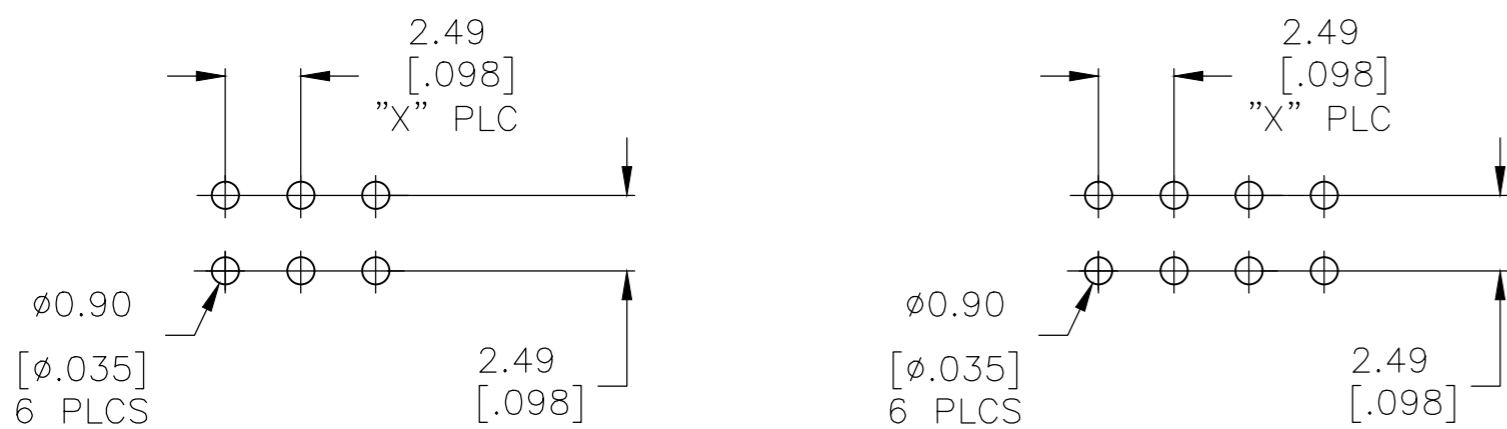
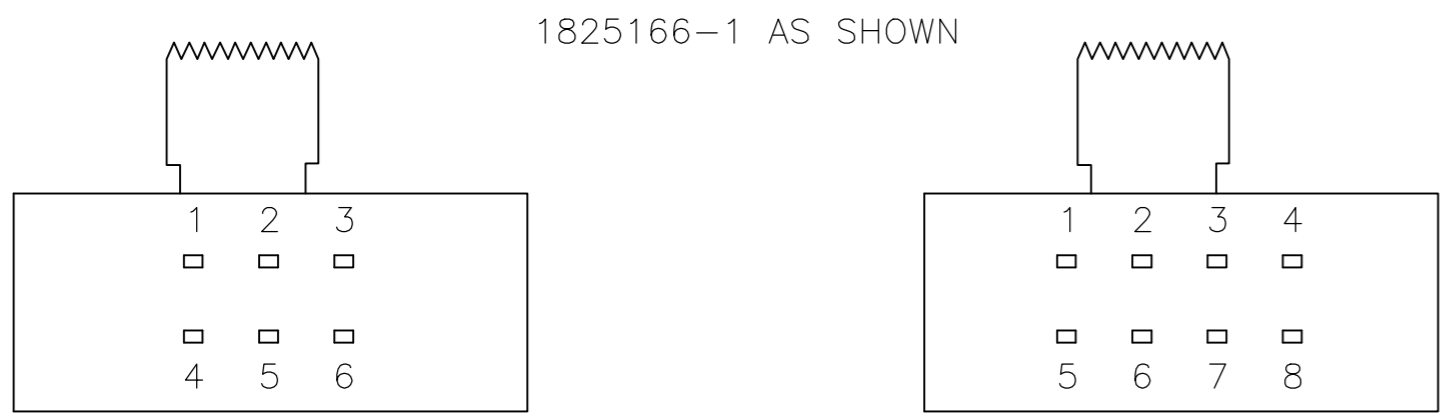
MATERIALS:  
 FRAME: STEEL, ZINC PLATE  
 ACTUATOR: POM UL94HB, BLACK  
 FIXED CONTACT/TERMINAL: COPPER ALLOY, SILVER OVER NICKEL PLATE  
 MOVING CONTACT: COPPER ALLOY, SILVER CLAD  
 COIL SPRING: TEMPERED STEEL WIRE  
 BALL- TEMPERED CARBON STEEL  
 TERMINAL BOARD: PHENOLIC, UL94HB  
 TERMINAL SEAL: EPOXY

ELECTRICAL:  
 CONTACT RATING: 250 MILLIAMPS@125V AC  
 CONTACT RESISTANCE: 30 MILLIOHMS MAX (INITIAL), 60 MILLIOHMS AFTER TEST  
 INSULATION RESISTANCE: 500 MEGOHMS MIN AT 500V DC  
 DIELECTRIC STRENGTH: 500 VAC RMS AT SEA LEVEL  
 LIFE EXPECTANCY: 10,000 CYCLES MIN. NO LOAD

MECHANICAL:  
 ACTUATION FORCE: 250 +150/-100 GRAMS  
 TRAVEL: 2.49 [.098]

ENVIRONMENTAL:  
 OPERATING TEMPERATURE: -10° TO +60°C  
 STORAGE TEMPERATURE: -10° TO +60°C  
 RESISTANCE TO SOLDER HEAT: 260°C FOR 10 SEC PER 109-202, COND. B  
 SOLDERABILITY: PER EIA-364-56A, PROCEDURE 3, COND. B

- NOTES:
- ALL MATERIALS AND FINISHES SHALL COMPLY WITH EU DIRECTIVE 2002/95/EC OF 27JAN2003 (ROHS)
  - ALL PERFORMANCE SPECIFICATIONS WERE TESTED IN ACCORDANCE WITH JIS-C-5441 UNLESS OTHERWISE STATED.



P.C.B. HOLE LAYOUT  
 (HOLE LAYOUT TOL ±.002  
 ON ALL DIMENSIONS)

1825166-1

P.C.B. HOLE LAYOUT  
 (HOLE LAYOUT TOL ±.002  
 ON ALL DIMENSIONS)

1825166-2 OBSOLETE

OBSOLETE	1-2 5-6	2-3 6-7	3-4 7-8	-	-		3	8.99 [.354]	19.51 [.768]	DP3T	STSA230RA04	1825166-2
	-	-	-	1-2 4-5	2-3 5-6		2	6.50 [.256]	16.99 [.669]	DPDT	STSA220RA04	1825166-1
						BOTTOM VIEW	X PLC	DIM B	DIM A	FUNCTION	T&B P/N	TE P/N

THIS DRAWING IS A CONTROLLED DOCUMENT.		DWN B.S.VISWESWARA	TE Connectivity	
DIMENSIONS: mm [INCHES]		CHK M S SARVER	SLIDE SWITCH, STSA220RA & STSA230RA SERIES	
TOLERANCES UNLESS OTHERWISE SPECIFIED:		APVD -	NAME	
0 PLC ± -		PRODUCT SPEC -	SIZE	
1 PLC ± -		APPLICATION SPEC -	CAGE CODE	
2 PLC ± 0.25[.010]		WEIGHT	DRAWING NO	
3 PLC ± -		CUSTOMER DRAWING	RESTRICTED TO	
4 PLC ± -		SCALE 4:1	SHEET 1 OF 1	
ANGLES ± -		REV A2		
FINISH				

## X-ON Electronics

Largest Supplier of Electrical and Electronic Components

*Click to view similar products for [Slide Switches](#) category:*

*Click to view products by [TE Connectivity](#) manufacturer:*

Other Similar products are found below :

[6-1437581-1](#) [M43R](#) [MHSS1104A](#) [MMD](#) [GH36W010001](#) [GH49S010001](#) [1437576-8](#) [EPS1PC1](#) [1825074-1](#) [1825160-3](#) [1825167-2](#)  
[25139NLDB](#) [25449NAH](#) [L101011ML04B](#) [SLB1240R45](#) [SLSA12004](#) [1825078-1](#) [1825080-4](#) [1825081-1](#) [1825269-1](#) [1825270-2](#)  
[STS141RA04](#) [T2215BEN506](#) [GF-124-0204](#) [GH46P000001](#) [GH46W000001](#) [GH49P010001](#) [25339NA](#) [25436NLDH](#) [CST91246FK](#)  
[TG36P000000](#) [TG36P000050](#) [47227LFE](#) [49331L](#) [MHSS1105A](#) [50208L](#) [L202091MS02Q](#) [4-1437581-7](#) [X2225CR-437W](#) [48BFSP3M2QT](#)  
[49329L](#) [1101M1S3ZB8E2](#) [1-1437581-1](#) [EG1218REDACTUATOR](#) [TG39W000000](#) [1825075-1](#) [TG36WS80065](#) [T105S1CWZBE](#)  
[SLB1280R5](#) [25136NLDB](#)