

4

3

2

1

THIS DRAWING IS UNPUBLISHED.

RELEASED FOR PUBLICATION

20

© COPYRIGHT 20

BY -

ALL RIGHTS RESERVED.

REVISIONS

P	LTR	DESCRIPTION	DATE	DWN	APVD
	A	INITIAL	23JUN2015	DW	CW
	A1	ECR-15-012067	10AUG2015	DW	CW
	A2	ECR-18-017123	09NOV2018	KW	CW
	B	ECR-20-007968	23JUN2020	WQR	CW

NOTES:

1. TECHNICAL CHARACTERISTICS:
 HOUSING MATERIAL: DIE CAST ALUMINIUM ALLOY
 SURFACE: POWDER COATED, GREY
 DEGREE OF PROTECTION: IP65 (MATED)

注释:

1. 技术参数:
 下壳材料: 铝合金
 表面处理: 粉末涂层, 灰色
 防护等级: IP65(配合)

PG/M THREAD
PG/M 螺纹孔

60
(73)

45
74.5
(93)
(58)

SCALE 3:5

4X M3 THREAD
4X M3 螺纹孔

(45)
27
44

THIS DRAWING IS A CONTROLLED DOCUMENT.

DIMENSIONS:	TOLERANCES UNLESS OTHERWISE SPECIFIED:
mm	
	0 PLC ±-
	1 PLC ±-
	2 PLC ±-
	3 PLC ±-
	4 PLC ±-
	ANGLES ±-
MATERIAL	FINISH
-	-
-	-

DWN	23JUN2015
David Wang	
CHK	23JUN2015
Chris Wang	
APVD	23JUN2015
Xiang Xu	
PRODUCT SPEC	108-137013
APPLICATION SPEC	114-137013
WEIGHT	-
Customer Drawing	

TE Connectivity		NAME		RESTRICTED TO
		H6B-TBFH-M/PG		
SIZE	CAGE CODE	DRAWING NO		
A3	00779	C-T17700631XX000		
SCALE		SHEET	OF	REV
1:1		1	2	B

1470-19 (3/13)

THIS DRAWING IS UNPUBLISHED.

RELEASED FOR PUBLICATION

20

© COPYRIGHT 20 BY -

ALL RIGHTS RESERVED.

REVISIONS

P	LTR	DESCRIPTION	DATE	DWN	APVD
	-	SEE SHEET 1	-	-	-

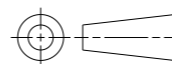
NOTES:
SEE SHEET 1.
注释:
见第1页.

T1770063116-000	H6B-TBFH-PG16	H6B HOUSING,CABLE-TO-CABLE,METAL SINGLE LOCKING, HIGH CONSTRUCTION,PG16,POWDER COATED,GREY H6B下壳,电缆对接,彩锌单扣,高结构,PG16,灰色粉末喷涂	PG16
T1770063120-000	H6B-TBFH-M20	H6B HOUSING,CABLE-TO-CABLE,METAL SINGLE LOCKING, HIGH CONSTRUCTION,M20,POWDER COATED,GREY H6B下壳,电缆对接,彩锌单扣,高结构,M20,灰色粉末喷涂	M20
T1770063121-000	H6B-TBFH-PG21	H6B HOUSING,CABLE-TO-CABLE,METAL SINGLE LOCKING, HIGH CONSTRUCTION,PG21,POWDER COATED,GREY H6B下壳,电缆对接,彩锌单扣,高结构,PG21,灰色粉末喷涂	PG21
T1770063125-000	H6B-TBFH-M25	H6B HOUSING,CABLE-TO-CABLE,METAL SINGLE LOCKING, HIGH CONSTRUCTION,M25,POWDER COATED,GREY H6B下壳,电缆对接,彩锌单扣,高结构,M25,灰色粉末喷涂	M25
T1770063129-000	H6B-TBFH-PG29	H6B HOUSING,CABLE-TO-CABLE,METAL SINGLE LOCKING, HIGH CONSTRUCTION,PG29,POWDER COATED,GREY H6B下壳,电缆对接,彩锌单扣,高结构,PG29,灰色粉末喷涂	PG29
T1770063132-000	H6B-TBFH-M32	H6B HOUSING,CABLE-TO-CABLE,METAL SINGLE LOCKING, HIGH CONSTRUCTION,M32,POWDER COATED,GREY H6B下壳,电缆对接,彩锌单扣,高结构,M32,灰色粉末喷涂	M32
PART NUMBER 料号	PART DESCRIPTION 描述		PG/M THREAD PG/M 螺纹孔

THIS DRAWING IS A CONTROLLED DOCUMENT.

DIMENSIONS:

mm



TOLERANCES UNLESS OTHERWISE SPECIFIED:

- 0 PLC ±-
- 1 PLC ±-
- 2 PLC ±-
- 3 PLC ±-
- 4 PLC ±-
- ANGLES ±-

MATERIAL

-

FINISH

-

DWN 23JUN2015

David Wang

CHK 23JUN2015

Chris Wang

APVD 23JUN2015

Xiang Xu

PRODUCT SPEC

108-137013

APPLICATION SPEC

114-137013

WEIGHT

-

Customer Drawing

NAME

H6B-TBFH-M/PG

SIZE

A3

CAGE CODE

DRAWING NO

00779 © T17700631XX000

RESTRICTED TO

-

SCALE

1:1

SHEET

2 OF 2

REV

B



TE Connectivity

X-ON Electronics

Largest Supplier of Electrical and Electronic Components

Click to view similar products for [Heavy Duty Power Connectors](#) category:

Click to view products by [TE Connectivity](#) manufacturer:

Other Similar products are found below :

[647757-1](#) [6643411-1](#) [6646058-2](#) [6646137-1](#) [6646138-1](#) [6646479-1](#) [6646608-1](#) [6646786-1](#) [6646940-1](#) [6651091-1](#) [6651525-1](#) [6651529-1](#)
[6651788-1](#) [696475-1](#) [702-32-01109](#) [703-25-02205](#) [73000005059](#) [73000005642](#) [73080255059](#) [73080965046](#) [765-15-0080A](#) [765-16-0080B](#)
[765-18-0080D](#) [829992-1](#) [902-77-02113](#) [PS00/A0620/6300](#) [PS25/A0420/63](#) [129-1J](#) [1409400](#) [AN0024023](#) [E6374G1](#) [e6389g2](#) [157-43GW8](#)
[MS3117-14AC](#) [1643543-1](#) [1650540-1](#) [1651811-2](#) [1766260-1](#) [1766282-1](#) [1766966-1](#) [1791340000](#) [NLDFT-3-BL-L-S120-M40A](#) [NLDFT-N-](#)
[W-L-C240-M40B](#) [NLS-2-R-C240-M40B](#) [NLS-N-W-C240-M40B](#) [NPS-3-BL-T6](#) [1986615-1](#) [2-1589900-8](#) [2199314-1](#) [KA8102](#)