



T3224 PRINTER

THERMAL TRANSFER PRINTER (600dpi)

TECHNICAL DATASHEET

TTDS-274 issue 3, September 2019

The T3224 printer is a robust industrial 600dpi thermal transfer printer. Specially designed to print on a wide range of TE Connectivity labels, cable markers, and identification marker sleeves.

Recommended when a high resolution of print is essential.

The T3224 printer is now also available bundled, with the latest version of TE Connectivity printing software, WinTotal. Please see page 3, for Printer order details.

The T3224 printer supersedes the TE3124 printer.

Features

- High accuracy printing
- Easy to use
- Light weight
- Small footprint
- Easy to fit accessories
- High definition for 3D barcodes & graphics
- WI-FI dongle supplied
- Full color touch screen
- Help video's Loaded on printer

Applications

- Industrial environments

Approvals / Declarations

- CE
- FCC Class A
- CB
- UL
- EAC
- CCC
- KC
- S-MARK
- RCM

For the latest issue of the printer, Cutter and Perforator EU Declaration of conformity please download:

"CE_CERT_RV3_00001_C1" for the T3224-PRINTER

These documents can be found at the TE document centre:

<http://www.te.com/commerce/DocumentDelivery/DDEController>

Environmental

A downloadable declaration and further information covering RoHS and REACH compliance can be found at the 'TE Product Compliance Support Centre':

<http://www.te.com/en/resources/product-compliance.html>

Specifications

The printer's 600dpi resolution, combined with recommended labels, cable markers, and identification marker sleeves, thermal transfer ribbons, meet all relevant TE performance specifications.

Print quality and print performance can only be guaranteed when specific TE printer and ribbons are used.

The current list of recommended printers and ribbons combinations can be found in TE document 411-121005 'Identification Printer Product Ribbon Matrix'.

This document can be found at the TE document centre:

<http://www.te.com/commerce/DocumentDelivery/DDEController>

HELP

For help and assistance please contact your local TE Connectivity representative. Alternatively, please contact your local Identification specialist by consulting TE document "411-121057" This document can be found at the TE document centre:

<http://www.te.com/commerce/DocumentDelivery/DDEController>

PRINTER ORDERING INFORMATION

| DESCRIPTION | PART NUMBER |
|-------------------------------------|--------------------|
| T3224-PRINTER | 1-2186502-1 |
| T3224-SWARE-PRINTER (Note 1) | 1-2186503-1 |

PRINTER PROPERTIES

PERFORMANCE

| | |
|---------------------------------------|--|
| PRINT SPEED: | 30, 40, 50, 75, 100, 125, 150mm/s. (1, 1.5, 2, 3, 4, 5 and 6in/s) |
| PRINT WIDTH MAX: | 105.7mm (4.16 in). |
| PRINT DEFINITION: | 600 dpi Thermal Transfer |
| LABEL WIDTH: CARRIER & TUBE WIDTH: | 4 - 110mm (0.16 - 4.33 in). 9 - 114mm (0.25 - 4.5 in). |
| LABEL HEIGHT: LABEL THICKNESS: | 3mm (0.12 in) minimum with Label backfeed. 4mm (0.16 in) minimum without label backfeed to 2,000mm (78.72 in) maximum. Label thickness 0.03 - 0.60mm (0.001- 0.024 in). Tube thickness up to 1.1mm (0.043 in). |
| INTERNAL ROLL CAPACITY: | 205mm (8 in) Outside Diameter, inside core diameter 38.1 – 100mm (1.5 – 4 in). |
| INK RIBBONS | 25mm (1 inch) core, ink inside or outside, variable length up to 450m (1476 ft) Width 25 - 114mm (0.98 - 4.49 in) |
| OPERATING TEMPERATURE, HUMIDITY: | 5°C to +40°C (+41°F to +104°F). +10 - 85% non condensing. |
| SENSOR | Variable position Gap & Reflective (automatic calibration). |
| ELECTRICAL REQUIREMENTS: | 100 to 240V - 50/60Hz, PFC. |
| POWER CONSUMPTION: | Standby<10W / Typical 150W / Maximum 300W. |
| PHYSICAL CHARACTERISTICS: | Depth: 460mm (18.1 in). Height: 288mm (11.3 in). Width: 252mm (9.92 in). Weight: 10kg (22 lb). |
| ELECTRONICS: | RAM 256MB, Processor speed 800MHz, Memory IFFS flash 50MB, Slot for SD memory card up to 512GB. |
| INTERFACES: | RS232C 1,200 to 230,400 baud/8 bit. USB 2.0 Hi-speed device to connect a PC. Ethernet 10/100 BASE-T. LPD, IPv4, IPv 6, RawIP printing, DHCP, HTTP, FTP, SMTP, SNMP, TIME, NTP, Zeroconf, SOAP web service. 1 x USB host at the operation panel for Service Key or USB memory stick. 1 x USB host at the operation panel for USB WLAN stick 2.4 GHz 802.11b/g/n. 2 x USB host at printer rear for Keyboard, barcode scanner, USB memory stick, USB Bluetooth adapter, USB WLAN stick 2.4 GHz 802.11b/g/n + 5 GHz a/n/ac with rod antenna. WLAN 802.11b/g/n, hotspot or infrastructure mode GHz. |

Note 1, T3224-SWARE-PRINTER comprises the latest full version of WinTotal with the basic printer.

PRINTER SPARE PARTS ORDERING INFORMATION

| | |
|--------------------------|--------------------------------|
| 600 dpi Printhead | |
| Description: | T3224-PRINTER-PRINTHEAD-600DPI |
| Part number: | 1-2186506-1 |
| Drive roller | |
| Part number: | T3200-DRIVE-ROLLER |
| Description: | 1-2186505-1 |
| Media Sensor | |
| Description: | T3200-PRINTER-LABEL-SENSOR |
| Part number: | 1-2186515-1 |

For full details of replacement parts please consult TE document 404-121026, T3212/T3224 PRINTER ILLUSTRATED PARTS LIST

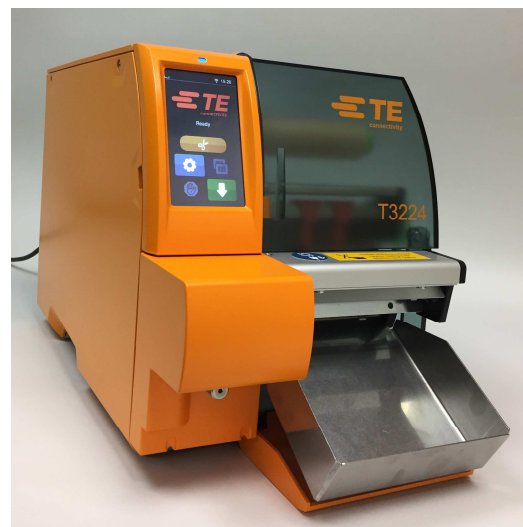
PRINTER ACCESSORY ORDERING INFORMATION

| | |
|-------------------------------|-------------------------------|
| Cutter: | |
| Description: | T3200-PRINTER-CUTTER |
| Part number: | 1-2186510-1 |
| Perforator: | |
| Description: | T3200-PRINTER-PERFORATOR |
| Part number: | 1-2186509-1 |
| Universal reel holder: | |
| Description: | PRINTER-UNIVERSAL-REEL-HOLDER |
| Part number: | EC9926-000 |

For more details regarding printer accessories please consult TTDS-260, and for more details concerning the Universal payoff please consult TTDS-259.

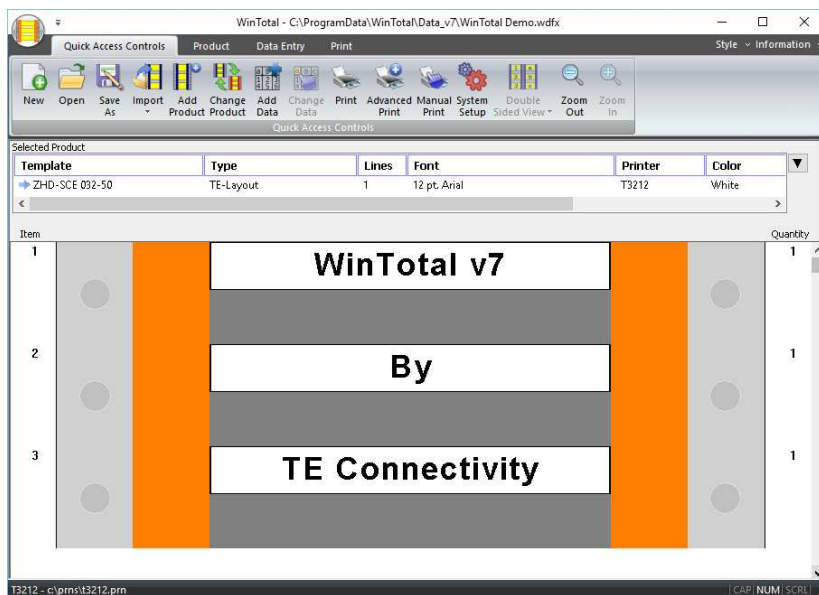


T3224 printing labels



T3224 fitted with a Cutter & catch tray

SOFTWARE



SOFTWARE ORDERING INFORMATION

| | |
|----------------------|-----------------------------|
| WINTOTAL 7 (Dongle) | |
| Description | WINTOTAL-7-DONGLE |
| Part number | 1-2186545-1 |
| WINTOTAL 7 (Licence) | |
| Description | WINTOTAL-7-END-USER-LICENCE |
| Part number | 1-2186546-1 |
| WINTOTAL 6 (Dongle) | |
| Description | WINTOTAL-6-DONGLE |
| Part number | EC9816-000 |
| WINTOTAL 6 (Licence) | |
| Description | WINTOTAL-6-END-USER-LICENCE |
| Part number | EC9817-000 |

For full compatibility with T3224 printers please use WinTotal Version 6.1.07 or later.

Cable Markers and Labels are fully supported by WINTOTAL printing software, available from the TE product store:

www.te.com/wintotal

te.com

TE Connectivity, TE Connectivity (logo) and Every Connection Counts and WinTotal are trademarks. All other logos, products and/or company names referred to herein might be trademarks of their respective owners.

The information given herein, including drawings, illustrations and schematics which are intended for illustration purposes only, is believed to be reliable. However, TE Connectivity makes no warranties as to its accuracy or completeness and disclaims any liability in connection with its use. TE Connectivity's obligations shall only be as set forth in TE Connectivity's Standard Terms and Conditions of Sale for this product and in no case will TE Connectivity be liable for any incidental, indirect or consequential damages arising out of the sale, resale, use or misuse of the product. Users of TE Connectivity products should make their own evaluation to determine the suitability of each such product for the specific application.

© 2019 TE Connectivity Ltd. family of companies All Rights Reserved.

PAGE 5

X-ON Electronics

Largest Supplier of Electrical and Electronic Components

Click to view similar products for [Printers category](#):

Click to view products by [TE Connectivity manufacturer](#):

Other Similar products are found below :

[897252-000](#) [CU0620-000](#) [F39639-000](#) [FTP-648MCL570](#) [PTMBL1912A](#) [PWC-L07A1-W1-E](#) [DPU-V445-10B-E](#) [D-SCE-12-50-S1-4](#) [D-SCE-3.2-50-S1-4](#) [IF2302-01UK-E](#) [IF9001-01P-E](#) [IFC-001K](#) [2000P-RIBBON-4AG-MED](#) [206868-000](#) [OP-LH200A-E](#) [LB1256-E](#) [LM-1/4-TUBE-WE](#) [308-LE](#) [SMS-V-19-9](#) [ACUH205A-E](#) [1813390001](#) [FTP-040P001](#) [FTP-628CU601R](#) [PW-C0725-W2-U](#) [HANDHELD-TMS-3.9-9](#) [3045950001](#) [351013-000](#) [RH-48-00-E](#) [4775630001](#) [TSK-508406-2.5CS8982](#) [TTC-PRINTER-PRINthead-300](#) [HW-762254-5-9](#) [IF2301-01B](#) [IFC-001K-E](#) [IFH001-01B](#) [LM-1/2-TUBE-WE](#) [DPU-D3-01A-E](#) [D-SCE-12-50-9](#) [D-SCE-4.8-50-4](#) [E64127-000](#) [ED4839-000](#) [T200-IDENT-DR4-DRIVEROLLER](#) [CP3963-000](#) [2000P-RIBBON-4AG-NAR](#) [2000P-RIBBON-WH-MED](#) [U001023895X1](#) [FTP-624Y002](#) [ED4098-000](#) [NC-LSC05](#) [TE3124-PRINthead](#)