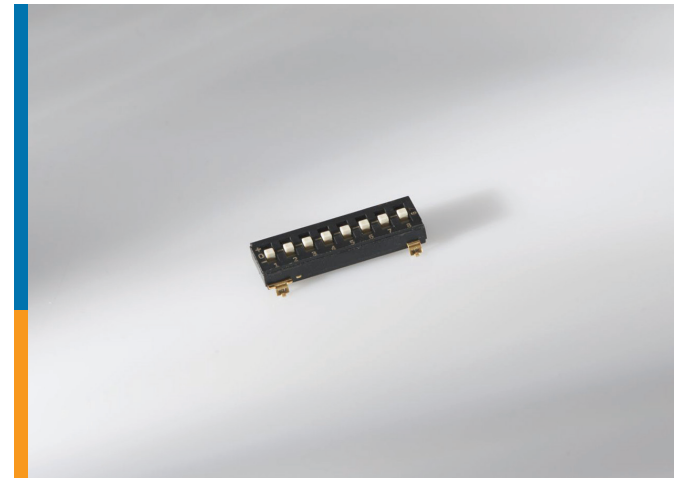


ALCOSWITCH

DIP Switch TDS Series

TE Connectivity's (TE) ALCOSWITCH DIP switch TDS series is designed for unique coding and streamlined manufacturing with full surface mount products. The tri-state configuration of each position allows for more advanced address setting on the DIP switch, thus providing more security in the application. The TDS series is available in both raised and recessed actuator versions. Parts are also available in both tube and tape & reel packaging, and are available with a top tape seal.



Applications

- Industrial and Automated Control Boards
- Fire and Security Systems
- Thermostats
- Home Automation
- Telecommunication Devices

Electrical

- Current Voltage Rating
Non switching 100 mA @ 50 VDC
Switching 25 mA @ 24 VDC
- Contact resistance 100 mΩ max
- Dielectric strength 500 VAC for 1 minute
- Capacitance 5 pF max @ 1 MHz

Mechanical

- Actuator force 1,000 gf max
- Actuator travel 0.8mm
- Life cycle 2,000 cycles
- Operating temperature -20° C to +85° C
- Storage temperature -40° C to +85° C

Materials

- Base/Cover: High temperature Nylon (UL94-VO)
- Contact: Cu alloy, Au over nickel plated
- Terminal: Brass, Au plated
- Actuator: LCP (UL94 V-O)

Benefits

- Tri-state positioning for unique coding configurations that provide added security
- Raised or recessed actuators for design flexibility
- Gold contact plating for high reliability and corrosion resistance
- Tape and reel packaging with top tape seal available for quick pick-and-place assembly

ALCOSWITCH DIP SWITCH TDS SERIES

Product Key



Product Selection Information

Part Number	Description	Position	Actuator Type	Sealing	Packaging
2319747-1	TDS04SGNNTU04	4	Raised	No Tape Seal	Tube
1-2319747-6	TDS04SGNNTRO4	4	Raised	No Tape Seal	Tape & Reel
1-2319747-8	TDS08SGNNTRO4	8	Raised	No Tape Seal	Tape & Reel
2319747-4	TDS09SGNNTU04	9	Raised	No Tape Seal	Tube
2319747-7	TDS05SGRSTRO4	5	Recessed	Top Tape Seal	Tape & Reel
2-2319747-7	TDS07SGRSTRO4	5	Recessed	Top Tape Seal	Tape & Reel
2-2319747-8	TDS08SGRSTU04	8	Recessed	Top Tape Seal	Tape & Reel
2-2319747-9	TDS09SGRSTRO4	9	Recessed	Top Tape Seal	Tape & Reel
1-2319747-5	TDS10SGRSTU04	10	Recessed	Top Tape Seal	Tube
3-2319747-0	TDS10SGRSTRO4	10	Recessed	Top Tape Seal	Tape & Reel

Dimensions

Part Number 2319747



te.com

©2017 TE Connectivity. All Rights Reserved. TE, ALCOSWITCH, TE Connectivity, and the TE connectivity (logo) are trademarks of the TE Connectivity Ltd. family of companies. Other logos, product and Company names mentioned herein may be trademarks of their respective owners.

While TE has made every reasonable effort to ensure the accuracy of the information in this brochure, TE does not guarantee that it is error-free, nor does TE make any other representation, warranty or guarantee that the information is accurate, correct, reliable or current. TE reserves the right to make any adjustments to the information contained herein at any time without notice. TE expressly disclaims all implied warranties regarding the information contained herein, including, but not limited to, any implied warranties of merchantability or fitness for a particular purpose. The dimensions in this catalog are for reference purposes only and are subject to change without notice. Specifications are subject to change without notice. Consult TE for the latest dimensions and design specifications.

1-1773931-8 BH 08/2017

USA: +1 (800) 522-6752
 Canada: +1 (905) 475-6222
 Mexico: +52 (0) 55-1106-0800
 Latin/S. America: +54 (0) 11-4733-2200
 Germany: +49 (0) 6251-133-1999
 UK: +44 (0) 800-267666
 France: +33 (0) 1-3420-8686
 The Netherlands: +31 (0) 73-6246-999
 China: +86 (0) 400-820-6015



X-ON Electronics

Largest Supplier of Electrical and Electronic Components

Click to view similar products for [DIP Switches/SIP Switches](#) category:

Click to view products by [TE Connectivity](#) manufacturer:

Other Similar products are found below :

[78M03S](#) [79B10T](#) [8136-475G4T](#) [G7G-1A2-CB-DC12](#) [A7SS-M](#) [DBP 2110](#) [DBP 2112](#) [DBS1008](#) [DHN02FTVTR](#) [DHN10T](#) [DHS108](#)
[DPL08TN](#) [DRD16CSE04](#) [DRR4010](#) [DRR60016](#) [DRS4016](#) [BD06E](#) [1825008-1](#) [1825444-1](#) [25.350.0653.0](#) [LA2-DC12](#) [SBS 5004 TG](#)
[SDA10H1BDA](#) [97R06ST](#) [A2C-2A5](#) [1825444-7](#) [ADE08SA04](#) [ADE12S04](#) [2161391-1](#) [2-1825058-8](#) [CCVA 2.5/ 4-G-5.08](#) [P26THRR32](#)
[25.330.0653.1](#) [25.352.0353.0](#) [MDG305ST](#) [IKN0600000](#) [IKN0800000](#) [LA2-002-DC24](#) [DBP2008](#) [DBS1003](#) [DBS2008](#) [438872000](#)
[DRD10CRAE04](#) [DRS1604](#) [DSR02T](#) [DSS 208 N](#) [5-1825033-1](#) [106-SDN06-EV](#) [1-1437507-6](#) [E2FMX2D1M1TGJ03M](#)
[E3ZMCT81M1TJ03M](#)