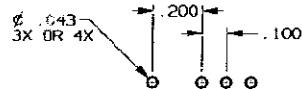
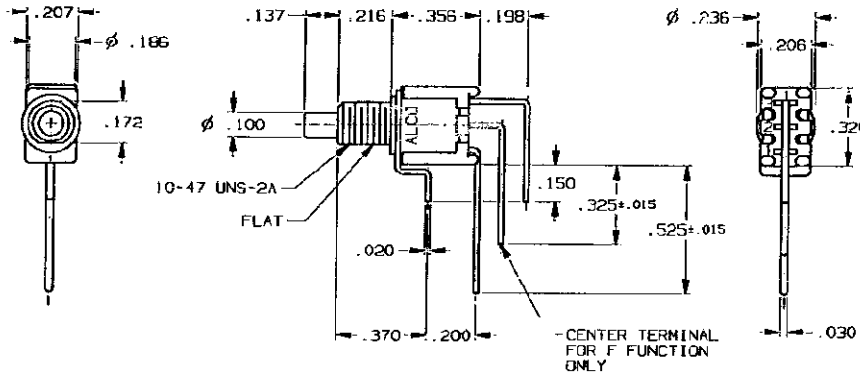


CONVERSION CHART	
MM	INCH
.002	0.05
.010	0.25
.015	0.38
.020	0.51
.030	0.76
.043	1.09
.100	2.54
.137	3.48
.150	3.61
.172	4.37
.186	4.72
.198	5.03
.200	5.08
.206	5.23
.207	5.26
.216	5.49
.236	5.99
.320	8.13
.325	8.26
.370	9.40
.525	13.34



RECOMMENDED HOLE LAYOUT

TOLERANCE ±.002 UNLESS OTHERWISE NOTED

SPECIFICATIONS:

MATERIALS:

CASE: HIGH TEMPERATURE POLYESTER.
 ACTUATOR BUTTON: POLYAMIDE, COLOR: SEE CHART BELOW.
 MOVING CONTACT: COPPER ALLOY, GOLD PLATE.
 FIXED CONTACT/TERMINAL: COPPER ALLOY, TIN/LEAD PLATE.
 TERMINAL SEAL: EPOXY.

ELECTRICAL:

CONTACT RATING: 0.4 VA MAX. @ 20 VDC OR PEAK AC.
 INITIAL CONTACT RESISTANCE: 20 MILLIOHMS MAX.
 INSULATION RESISTANCE: 1,000 MEGOHMS @ 500 VDC MIN.
 DIELECTRIC STRENGTH: 1,000 VOLTS RMS @ SEA LEVEL.
 LIFE EXPECTANCY: 100,000 CYCLES.

MECHANICAL:

ACTUATION FORCE: 50 TO 400 GRAMS.
 ACTUATION TRAVEL: .030".

ENVIRONMENTAL:

OPERATING TEMPERATURE: -22°F TO +149°F (-30°C TO +65°C).
 STORAGE TEMPERATURE: -22°F TO +149°F (-30°C TO +65°C).

NOTES:

1. INTERPRET DRAWING PER ANSI Y14.5M-1982.

TERMINALS CONNECTED WHEN BUTTON IS IN POSITIONS SHOWN.		
FUNCTION CODE		
C	(1-3)	OFF
F	(2-3)	2-1
() - INDICATES A MOMENTARY CIRCUIT		
NOTE:		
TERMINAL DESIGNATION NUMBERS ARE FOR REFERENCE ONLY AND DO NOT APPEAR ON SWITCHES.		

(*)	ACTUATOR BUTTON COLORS
(0)	BLACK
(2)	RED
(6)	BLUE

OUTLINE DRAWING			
SPECIFICATIONS ARE SUBJECT TO CHANGES WITHOUT NOTICE			
 THIRD ANGLE PROJECTION	UNLESS OTHERWISE SPECIFIED DIMENSIONS ARE IN INCHES DO NOT SCALE PRINT	ORIGINAL DATE OF DRAWING: 10-2-96	TYCO ELECTRONICS TITLE: OUTLINE DRAWING PUSHBUTTON SWITCH TPC11*GVRA(*) Dwg. NO. 1-1437572-9 REV. A
TOLERANCES (EXCEPT AS NOTED) ANGULAR ±.1° DECIMAL .XX ±.0 DECIMAL .XXX ±.010 DECIMAL .XXXX ±.0	FILE NAME: DIRECTORY: PROJECT: 403040UT TINSWTC?	DRAWN: S. KIRCORIAN DATE: 10-2-96 CHECKED: DATE: APPROVED: DATE:	
AUGAT CONFIDENTIAL This document contains information which is the exclusive property of Augat, Inc. Distribution, reproduction or use by others is not permitted without the expressed written consent of Augat.	MATERIAL: SEE SPECIFICATIONS FINISH: SEE SPECIFICATIONS	CODE IDENT. NO. 91506 DWG. SIZE C	
PROPERTY CODE: BSI			

REV	DESCRIPTION
A	PER OGS-0173-02 APD-MZ 03OCT02

X-ON Electronics

Largest Supplier of Electrical and Electronic Components

Click to view similar products for [Pushbutton Switches](#) category:

Click to view products by [TE Connectivity](#) manufacturer:

Other Similar products are found below :

[8940K2012](#) [LW1L-M1C10V-A](#) [LW1L-M1C70-A](#) [LW2L-A1C20M-GD](#) [LW2L-M1C20M-A](#) [60324L](#) [M22-D-R-GB0/K11](#) [M7E-HRN2](#)
[67021K512](#) [67081K512X](#) [701PB580](#) [7199K101](#) [810K12910](#) [810KSV30B](#) [MML21EA2ADK](#) [MML21KA3ABK](#) [MML23KA3AC05K-001](#)
[MML23KW3AA01W](#) [8418K2](#) [8442K2](#) [8442K3](#) [8450K1](#) [860K11911T01A](#) [861901](#) [861K11911T01A07](#) [861K13810T00A14](#) [861K13911](#)
[8646AB6X718UL](#) [8646ABUL](#) [9001KXRK](#) [907AYY100](#) [PMHD155A1](#) [9533CD4+U574+U4922](#) [95-414.000](#) [99-450.837](#) [99-453.837](#)
[PV3H2B0NN-341](#) [1203MRA](#) [A22NZBGANGA](#) [A22NZBNANGA](#) [A22NZMPATRA](#) [A2PMA1X03EC56](#) [A3A-5123-02](#) [A3A-7140](#) [A3A-7310](#) [A3A-7340](#) [A3U-TMW-A2C-5M](#) [A595](#) [12037A2ULCSA](#) [ABD122N-B](#)