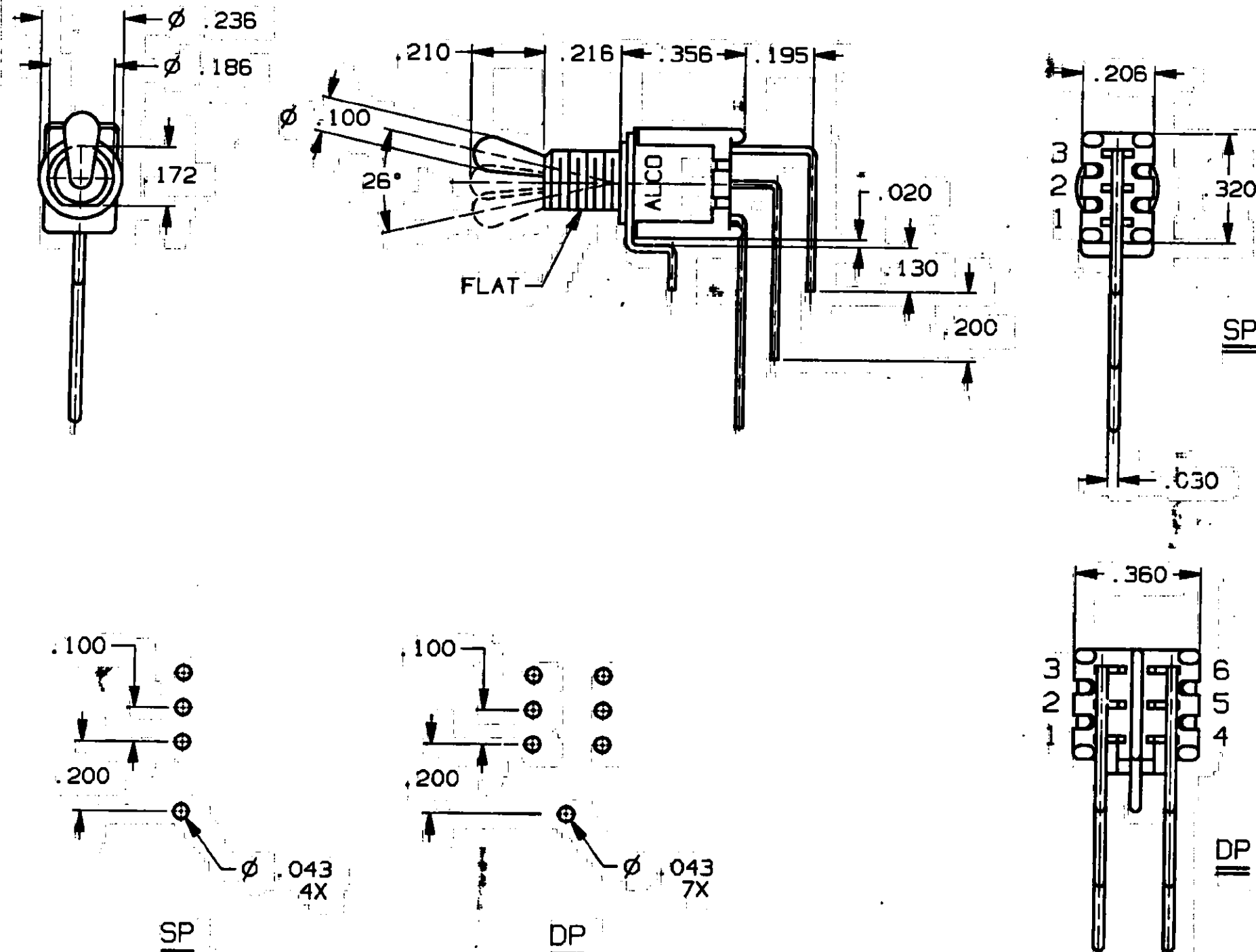


CONVERSION CHART	
INCH	MM
.002	0.05
.010	0.25
.015	0.38
.020	0.51
.030	0.76
.043	1.09
.100	2.54
.130	3.48
.150	3.81
.172	4.37
.186	4.72
.195	4.95
.200	5.08
.206	5.23
.210	5.33
.216	5.49
.236	5.99
.320	8.13
.356	9.04
.360	9.14



RECOMMENDED HOLE LAYOUT
TOLERANCE ± .002 UNLESS OTHERWISE NOTED

3 SPECIFICATIONS:

MATERIALS:
CASE: HIGH TEMPERATURE POLYESTER.
FRAME: STEEL, TIN PLATED.
ACTUATOR: COPPER ALLOY, NICKEL PLATED.
MOVABLE CONTACT: COPPER ALLOY, GOLD OVER NICKEL PLATE.
STATIONARY CONTACT: COPPER ALLOY, GOLD OVER NICKEL PLATE.
TERMINALS: COPPER ALLOY, TIN LEAD PLATED.
TERMINAL SEAL: EPOXY

ELECTRICAL:
CONTACT RATING: 0.4 VA @ 20 VDC OR PEAK AC
INITIAL CONTACT RESISTANCE: 20 MILLIOHMS MAX.
INSULATION RESISTANCE: 1,000 MEGOHMS AT 500 VDC MIN.
DIELECTRIC STRENGTH: 1,000 VOLTS RMS AT SEA LEVEL
LIFE EXPECTANCY: 80,000 CYCLES (2 POSITION)
60,000 CYCLES (3 POSITION)

ENVIRONMENTAL:
OPERATING TEMPERATURE: -22°F TO +185°F (-30°C TO +85°C)
STORAGE TEMPERATURE: -67°F TO +185°F (-55°C TO +85°C)

3 NOTES:

1. INTERPRET DRAWING PER ASME Y14.5M-1994.

TERMINALS CONNECTED WHEN TOGGLE IS IN POSITIONS SHOWN.			
FUNCTION CODE			
	123 456	123 456	123 456
TT21PG-VRA-1	2 TO 1 5 TO 4	OFF	2 TO 3 5 TO 6
TT21NG-VRA-1	2 TO 1 5 TO 4	NONE	2 TO 3 5 TO 6
TT11EG-VRA-1	2 TO 1	OFF	2 TO 3
TT11DG-VRA-1	2 TO 1	NONE	2 TO 3

NOTE:
TERMINAL DESIGNATION NUMBERS ARE FOR REFERENCE ONLY AND DO NOT APPEAR ON SWITCHES.

3 CUSTOMER DRAWING
SPECIFICATIONS ARE SUBJECT TO CHANGES WITHOUT NOTICE

AUGAT D/N 40158

<p>THIRD ANGLE PROJECTION</p>	UNLESS OTHERWISE SPECIFIED DIMENSIONS ARE IN INCHES DO NOT SCALE PRINT		ORIGINAL DATE OF DRAWING: 8-6-83	TYCO ELECTRONICS TITLE: CUSTOMER DRAWING TOGGLE SWITCH VRA SP, DP DMG. NO. 4-1437561-8 REV. B
	TOLERANCES (EXCEPT AS NOTED) ANGULAR = ±1° DECIMAL .XX = ±.010 DECIMAL .XXX = ±.010 DECIMAL .XXXX = ±.010	FILE NAME: 401580.T	DIRECTORY: TINSWCH	
	MATERIAL: SEE SPECIFICATIONS		CHECKED: B. BUCKHEIT DATE: 8-9-83	
	FINISH: SEE SPECIFICATIONS		APPROVED: RMM DATE: 8-9-83	
			CODE IDCNT. NO. 91506	
			DMG. SIZE C	

REV	B
REVISIONS	0G3C-0194-05 MZ 27MAR07

X-ON Electronics

Largest Supplier of Electrical and Electronic Components

Click to view similar products for [Toggle Switches](#) category:

Click to view products by [TE Connectivity](#) manufacturer:

Other Similar products are found below :

[8A1-C-222](#) [60012L](#) [6006L](#) [6663](#) [7101MD9V30GE](#) [7101SPDV30BE](#) [7103SDV30BE](#) [7105D](#) [7108P3YAV2BE](#) [71YY50282](#)
[7201MD9AVBE](#) [7301K38](#) [7306K36](#) [7310K36](#) [7314K36](#) [7506K4](#) [7660K12](#) [7691K14](#) [7700K1](#) [FA75A-CBL](#) [8396K108](#) [8824K14](#) [8828K13](#)
[G2VX](#) [G3VX](#) [PS83-121G](#) [A101MD9AB04](#) [A101SD9AB04](#) [A101SDCQ04](#) [A103SD9AQ04](#) [A107TZB04](#) [A123P32YZQ](#) [A123S1YZG](#)
[A127S1YCQ](#) [1-1825192-0](#) [A131S1YZQ](#) [A201SCWZB04](#) [A207SYCB04](#) [A208J61ZQ0004](#) [A221K12KAG](#) [A221S1YZQ](#) [A221T1TCQ](#)
[A232K12KZQ](#) [A232M1YCQ](#) [A323S1CWZQ](#) [A423S1CWZG-M8](#) [A423S1YZQ](#) [12149A-3V](#) [12156AX408](#) [12147AGKX679](#)