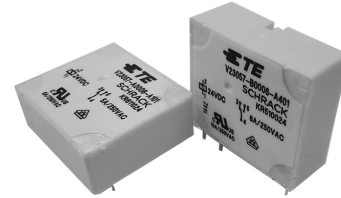


**Power PCB Relay Card E**

- 1 pole 8A, 1 form C (CO) or 1 form A (NO) contact
- 4kV coil-contact
- Vertical and horizontal version
- Wash tight
- RoHS compliant (Directive 2011/65/EC)



Typical applications  
I/O modules, heating control, timers



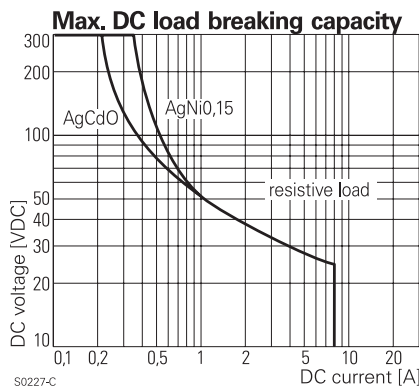
**Approvals**

VDE Cert. No. 5146, UL E214025  
Technical data of approved types on request

Contact Data	8A	5A	bifurcated
Contact arrangement	1 form C (CO) or 1 form A (NO)		
Rated voltage	250VAC		
Max. switching voltage	400VAC		
Rated current	8A	5A	5A
Limiting making current, max 4 s, duty factor 10%	15A	-	-
Breaking capacity max.	2000VA	1250VA	1250VA
Contact material	AgCdO, AgNi20	AgNi0.15	AgNi0.15
Contact style	single contact	single contact	bifurcated contact
Frequency of operation, with/without load	360/72000h <sup>-1</sup>		
Operate/release time typ.	7/3ms		
Bounce time typ., form A/form B	0.5/3ms		

**Contact ratings**

Type	Contact	Load	Cycles
<b>IEC61810</b>			
AgCdO	C (CO)	8A, 250VAC, resistive, 70°C	20x10 <sup>3</sup>
AgNi20	C (CO)	8A, 250VAC, resistive 70°C	20x10 <sup>3</sup>
AgCdO	A (NO)	8A, 250VAC, resistive, 70°C	20x10 <sup>3</sup>
AgNi20	A (NO)	8A, 250VAC, resistive, 70°C	30x10 <sup>3</sup>
AgNi0.15	A (NO)	5A, 250VAC, resistive, 70°C	20x10 <sup>3</sup>
Mechanical endurance	>20x10 <sup>6</sup> operations		



**Coil Data**

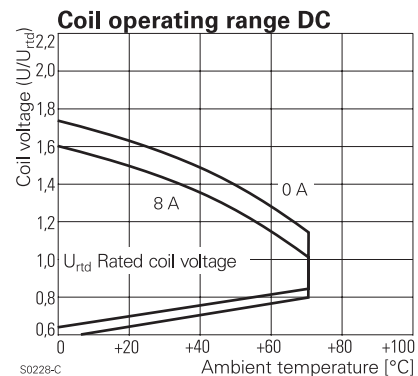
Coil voltage range 6 to 110VDC

**Coil versions, DC coil**

Coil code	Rated voltage VDC	Operate voltage VDC	Release voltage VDC	Coil resistance $\Omega \pm 15\%^{1)}$	Rated coil power mW
001	6	4.2	0.6	80 <sup>1)</sup>	450
002	12	8.3	1.2	330 <sup>1)</sup>	436
006	24	16.8	2.4	1200	480
013	48	33.6	4.8	4700	490
023	60	42.0	6.0	7200	500
028	110	77.0	11.0	23400	517

1) Coil resistance  $\pm 10\%$ .

All figures are given for coil without pre-energization, at ambient temperature +23°C.



Other coil voltages on request.

**Insulation Data**

Initial dielectric strength	
between open contacts	1000V <sub>rms</sub>
between contact and coil	4000V <sub>rms</sub>
Clearance/creepage	
between contact and coil	$\geq 4/4\text{mm}$
Material group of insulation parts	IIIa
Tracking index of relay base	PTI225V

**Power PCB Relay Card E (Continued)**

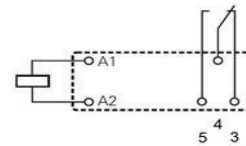
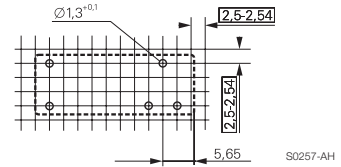
**Other Data**

Material compliance: EU RoHS/ELV, China RoHS, REACH, Halogen content refer to the Product Compliance Support Center at <a href="http://www.te.com/customersupport/rohssupportcenter">www.te.com/customersupport/rohssupportcenter</a>	
Ambient temperature	-40 to +70°C
Category of environmental protection	RTIII - wash tight
IEC 61810	
Terminal type	PCB-THT
Mounting distance	5mm
Weight	14g
Resistance to soldering heat THT	
IEC 60068-2-20	260°C/5s
Packaging/unit	tube/20 pcs., box/400 pcs.

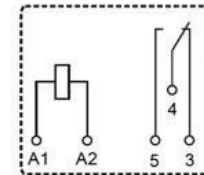
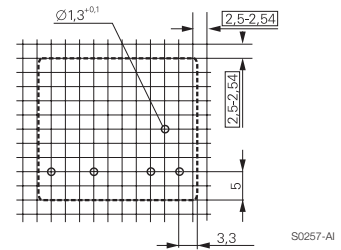
**PCB layout / terminal assignment**

Bottom view on solder pins

Vertical version

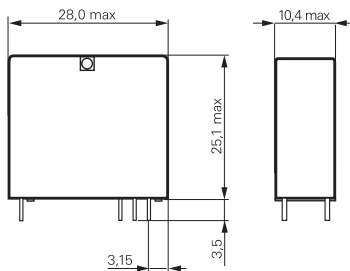


Horizontal version



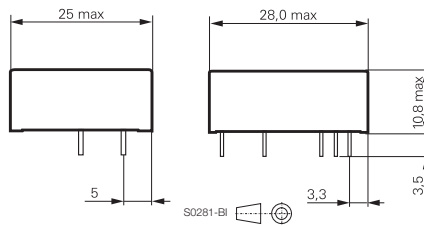
**Dimensions**

Vertical version



S0280-AH

Horizontal version



S0281-BI

**Power PCB Relay Card E** (Continued)

<b>Product code structure</b>	Typical product code	<b>V23057</b>	<b>-A</b>	<b>0</b>	<b>006</b>	<b>-A</b>	<b>1</b>	<b>01</b>
<b>Type</b>		<b>V23057</b> Power PCB Relay Card E						
<b>Version</b>		<b>A</b> Horizontal <b>B</b> Vertical						
<b>Version</b>		<b>0</b> Standard (nature white)						
<b>Coil</b>		Coil code: please refer to coil versions table						
<b>Contact set</b>		<b>A</b> Single contact						
<b>Contact material</b>		<b>1</b> AgNi 0.15 <b>2</b> AgNi 20 <b>4</b> AgCdO						
<b>Contact configuration</b>		<b>01</b> 1 form C contact (1 CO) <b>02</b> 1 form A contact (1 NO)						

Product code	Version	Contact arrangement	Contact material	Coil	Part Number	
V23057-A0002-A101	Horizontal	1 form C (CO) contact	AgNi 0.15	12VDC	1393215-4	
V23057-A0002-A401			AgCdO		1393215-9	
V23057-A0006-A101			AgNi 0.15	24VDC	2-1393215-1	
V23057-A0006-A201			AgNi 20		2-1393215-3	
V23057-A0006-A401			AgCdO		2-1393215-5	
V23057-B0001-A101	Vertical	1 form C (CO) contact	AgNi 0.15	6VDC	6-1393215-6	
V23057-B0002-A101			AgNi 20	12VDC	6-1393215-7	
V23057-B0002-A201				6-1393215-9		
V23057-B0002-A401			AgCdO	7-1393215-1		
V23057-B0006-A101			AgNi 0.15	1 form A (NO) contact	24VDC	7-1393215-5
V23057-B0006-A102						7-1393215-9
V23057-B0006-A201						8-1393215-1
V23057-B0006-A401						8-1393215-5
V23057-B0006-A402			AgNi 20	1 form A (NO) contact	60VDC	8-1393215-6
V23057-B0023-A201				1 form C (CO) contact		2-1415543-8

This list represents the most common types and does not show all variants covered by this data sheet.  
Other types on request

## X-ON Electronics

Largest Supplier of Electrical and Electronic Components

*Click to view similar products for [TE Connectivity](#) manufacturer:*

Other Similar products are found below :

[D38999/24FJ4AN](#) [570416-000](#) [CLTEQ-M81CE-SSRELAY-4-20V](#) [4-1195131-0](#) [650069-000](#) [SMD100-2](#) [2029299-1](#) [358838-000](#) [CB-1022B-78](#) [RM707012](#) [RP410012](#) [MMS42](#) [1-640426-8](#) [2EDL4CM](#) [DTS20W19-11PD-3028-LC](#) [RM202615](#) [NC6-P104-06](#) [MSPS103B](#)  
[DTS26F21-41HE-LC](#) [DTS26F21-41AE](#) [DTS26F21-41PE-LC](#) [DTS26F21-11SE-3028-LC](#) [30DCB6](#) [1932144-1](#) [293545-4](#) [LVR125S](#)  
[MS27466T25F4PB](#) [CKB-38-78010](#) [TR04AI-TINELLOCKRING](#) [1206SFF150F/63-2](#) [D38999/20JB35HA](#) [TE1500A2R2J](#) [DTS24F25-29PC-3028-LC](#) [D38999/20WC8BB](#) [DTS24F19-11SC-3028-LC](#) [D38999/24WG11HA](#) [D38999/24WG11HN](#) [MS27467T21F11H](#) [DJT16E21-11HA](#)  
[MS27467T21F35J](#) [MS27467T21F11J](#) [MS27467T21F16H-LC](#) [MS27467T21F35H](#) [MS27467T21F41H-LC](#) [1206SFH150F/24-2](#) [RP330024](#)  
[DJT16E21-11PA-LC](#) [DJT16E21-11HA-LC](#) [DJT16E21-11AA](#) [MS27467T21B11JA](#)