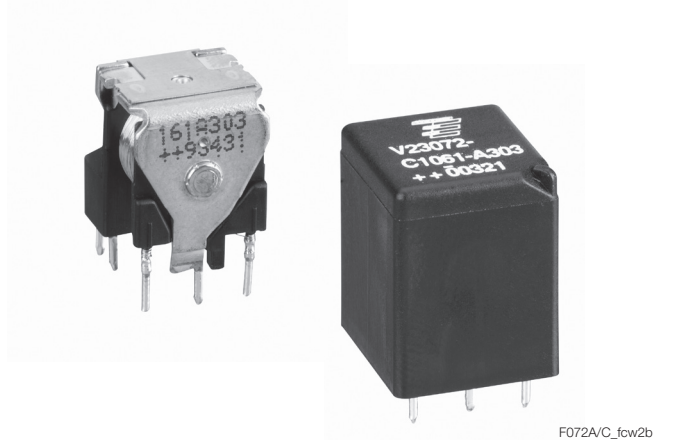


Mini Relay K (Open – Sealed)

- Limiting continuous current 20A
- 24VDC coil versions available

Typical applications

Car alarm, hazard warning signal, heated rear screen, immobilizer, lamps front/rear, fog light, interior lights, sun roof, turn signal, wiper control.

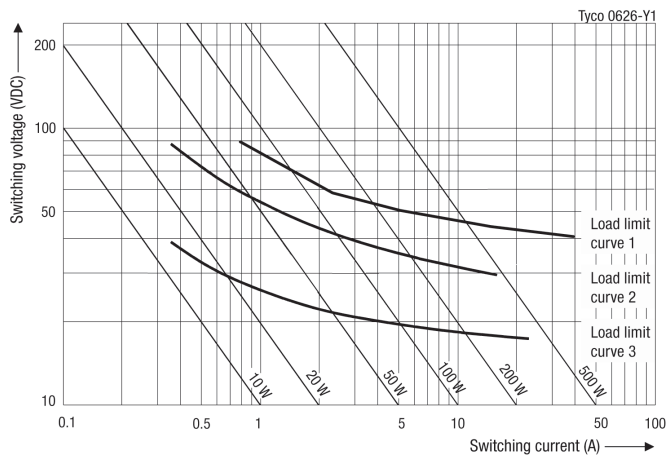


Contact Data

| Load | resistive/inductive load V23072-C10**-A302 | resistive/inductive load V23072-C10**-A303 | resistive/inductive load V23072-C10**-A308 | head/indicator lamp V23072-C1061-A402 | head/indicator lamp V23072-C1061 A408 |
|---|---|---|---|---|--|
| Contact arrangement | 1 form A, 1 NO | 1 form C, 1 CO | 1 form U/X, 2 NO | 1 form A, 1 NO | 1 form U/X, 2 NO |
| Rated voltage | 12VDC | 12VDC | 12VDC | 12VDC | 12VDC |
| Rated current | 15A | 10/15A | 2x10A | 12A | 2x6A |
| Limiting continuous current | | | | | |
| 23°C | 15A | 10/15A | 2x10A | 12A | 2x6A |
| 85°C | 10A | 5/10A | 2x6A | 10A | 2x5A |
| Limiting making current ¹⁾²⁾ | 60A | NC/NO 12/60A | 2x40A | 60A ³⁾ | 120A ³⁾ |
| Limiting breaking current | 20A | 10/20A | 2x20A | 6A | 12A |
| Contact material | AgNi0.15 | AgNi0.15 | AgNi0.15 | AgSnO.2 | AgSnO.2 |
| Min. recommended contact load ⁴⁾ | 1A at 5VDC | 1A at 5VDC | 1A at 5VDC | 1A at 5VDC | 1A at 5VDC |
| Initial voltage drop at 10A, typ./max. 150/300mV | | 50/300mV | 50/300mV | 2x50/300mV | 150/300mV |
| Operate/release time max. | | | typ. 3/1.5ms ⁵⁾ | | |
| Electrical endurance | >2x10 ⁵ ops. at 13.5VDC, 10A | >2x10 ⁵ ops. at 13.5VDC, 10A | >2x10 ⁵ ops. at 13.5VDC, 10A | >1x10 ⁶ ops. up to 6x21W >1.5x10 ⁵ ops. 100A (on), 10 A (off) high beam | >1.5 x 10 ⁶ ops. up to 6x21W >7.5x10 ⁵ ops. 100A (on), 10A (off) high beam |

- 1) The values apply to a resistive load or inductive load with suitable spark suppression and at maximum 13.5VDC for 12VDC and 27VDC for 24VDC load voltages.
- 2) For a load current duration of maximum 3s for a make/break ratio of 1:10.
- 3) Corresponds to the peak inrush current on initial actuation (cold filament).
- 4) See chapter Diagnostics of Relays in our Application Notes or consult the internet at <http://relays.te.com/appnotes>
- 5) For unsuppressed relay coil. A low resistive suppression device in parallel to the relay coil increases the release time and reduces the lifetime caused by increased erosion and/or higher risk of contact tack welding (monostable version only).

Max. DC load breaking capacity



Load limit curve 1: safe shutdown, connected as form X, load on pin 5 and 7.
 Load limit curve 2: safe shutdown, no stationary arc (NO contact).
 Load limit curve 3: arc extinguishes during transit time (CO contact).
 Load limit curves measured with low inductive resistors verified for 1000 switching events.

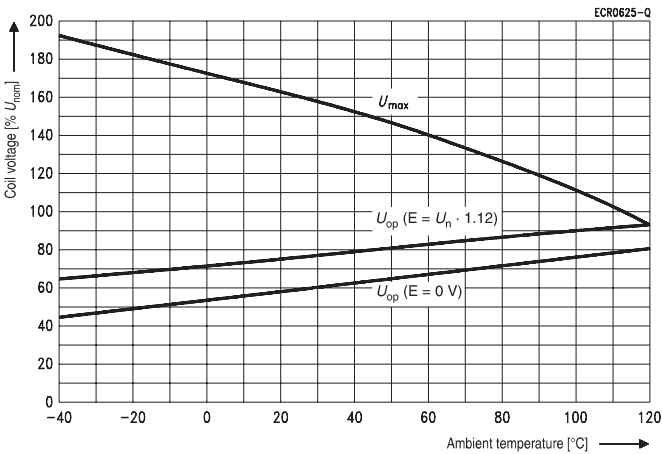
Mini Relay K (Open – Sealed) (Continued)

| Coil Data | |
|--------------------|--------------|
| Rated coil voltage | 12VDC, 24VDC |

| Coil versions, DC coil | | | | | |
|------------------------|-------------------|---------------------|---------------------|-----------------------------------|--------------------|
| Coil code | Rated voltage VDC | Operate voltage VDC | Release voltage VDC | Coil resistance $\Omega \pm 10\%$ | Rated coil power W |
| 061 | 12 | 6.9 | 1.2 | 130 | 1.1 |
| 062 | 24 | 14.1 | 2.4 | 520 | 1.1 |

All figures are given for coil without pre-energization, at ambient temperature +23°C.

Coil operating range

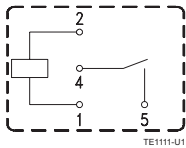


Does not take into account the temperature rise due to the contact current
E = pre-energization.

Terminal Assignment (Open and Sealed version)

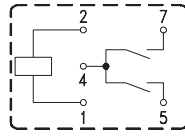
Bottom view on solder pins

1 form A, NO



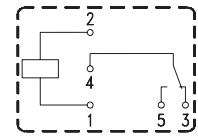
TE1111-U1

1 form U/X, 2 NO



TE1116-11

1 form C, CO



TE1077-B1

| Other Data | |
|------------------------------------|--|
| EU RoHS/ELV compliance | compliant |
| Degree of protection | IEC 61810 |
| | RT II – open (V23072-A), RT III – imm. cleanable (V23072-C) |
| Climatic cycling with condensation | EN ISO 6988 |
| | 20 cycles, storage 8/16h |
| Temperature cycling (shock) | IEC 60068-2-14, Na |
| | 720 cycles, -40/+85°C (dwell time 1h) |
| Damp heat constant | IEC 60068-2-3, Ca |
| | 56 days, upper air temperature 55°C |
| Corrosive gas | IEC 60068-2-42 |
| | 10 days |
| | IEC 60068-2-43 |
| | 10 days |
| Vibration resistance (functional) | IEC 60068-2-6 (sine sweep), 10 to 200Hz, |
| | 23 to 35g ⁶⁾ |
| Shock resistance (functional) | IEC 60068-2-27 (half sine), 4 to 6ms |
| | 23 to 280g ⁶⁾ |
| Terminal type | PCB |
| Weight, open/sealed | approx. 8/9g (0.28/0.32oz) |
| Solderability (aging 3: 4h/155°C) | IEC 60068-2-20 |
| | Ta, method 1, hot dip 5s, 215°C |
| Sealing, IEC 60068-2-17 | Qc, method 2, 1min/70°C |
| Storage conditions | according IEC 600688 ⁷⁾ |
| Packaging unit | open |
| | 600 pcs. |
| | sealed |
| | 504 pcs. |

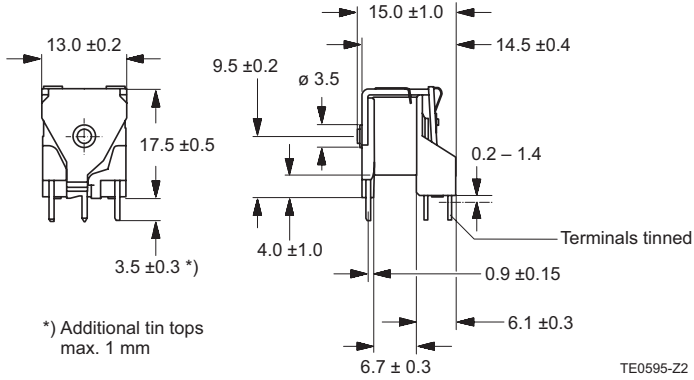
6) Values weakest direction. Depending on mounting position: no change in the switching state >10µs.

7) For general storage and processing recommendations please refer to our Application Notes and especially to Storage in the Definitions or at <http://relays.te.com/appnotes/>

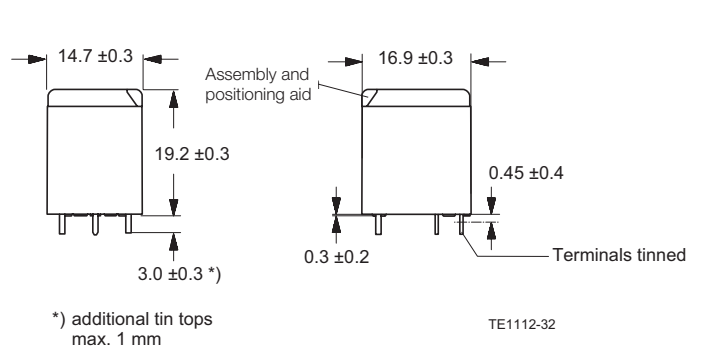
Mini Relay K (Open – Sealed) (Continued)

Dimensions

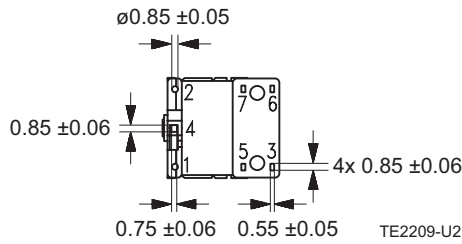
Mini Relay K Open Version



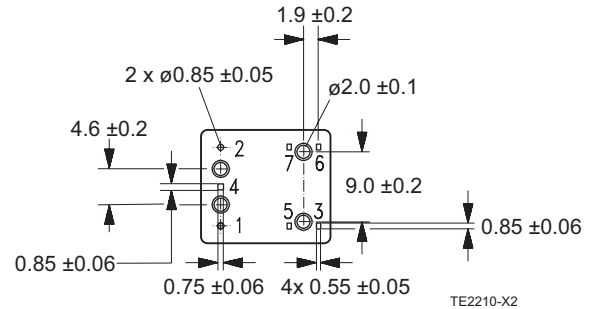
Mini Relay K Sealed Version



View of the terminals (bottom view)

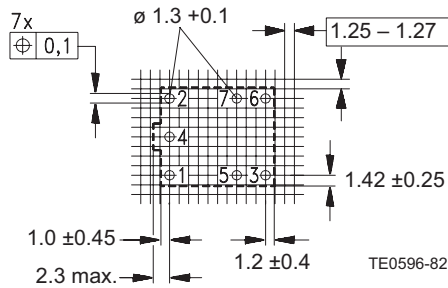


View of the terminals (bottom view)



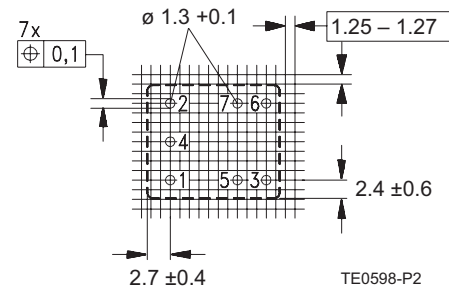
PCB Layout

Bottom view on solder pins, grid 1.25 to 1.27mm



PCB Layout

Bottom view on solder pins, grid 1.25 to 1.27mm



X-ON Electronics

Largest Supplier of Electrical and Electronic Components

Click to view similar products for [Automotive Relays](#) category:

Click to view products by [TE Connectivity](#) manufacturer:

Other Similar products are found below :

[7-1414968-8](#) [7-1617345-6](#) [9-1617516-5](#) [G5CE1ASIDC12](#) [1393204-2](#) [1393302-3](#) [13Z99A115-0074](#) [1432872-1](#) [AR4-15F11-S01](#) [AR4-15H11](#)
[1617057-2](#) [1617058-6](#) [1617518-5](#) [2-1617057-2](#) [2-1617057-6](#) [2-1617058-3](#) [CB1F-M-12V-H15](#) [898H-1AH-D-001-12VDC](#) [AR4-11F11](#)
[AR4-15F11](#) [AR4-41F11](#) [24198-1](#) [4-1617057-0](#) [41FZ-200ACG-BSL](#) [5-1616920-2](#) [5-1617052-9](#) [5407-0011-HS](#) [CB1AF-M-12V-H59](#) [5-](#)
[1617346-8](#) [103-1AH-C-12VDC](#) [V23134A1052X299](#) [6-1393302-1](#) [897H-1AH-D-R1-U01-12VDC](#) [FTR-P3CP024W1-06](#) [1-1617057-8](#) [3-](#)
[1393305-1](#) [5436-0001-HS](#) [V23086-R1851-A502](#) [V23136-A0004-X075](#) [898H-1AH-D1SW-R1-12VDC](#) [RH4C1P2607](#) [RE031005](#)
[V23134M0052G242](#) [1393204-1](#) [23234B0001X001-EV-144](#) [AZ979-1A-24D](#) [2-1904020-1](#) [V23134B0052C642](#) [V23134B0053C642](#) [V23234-](#)
[A1001-X036](#)