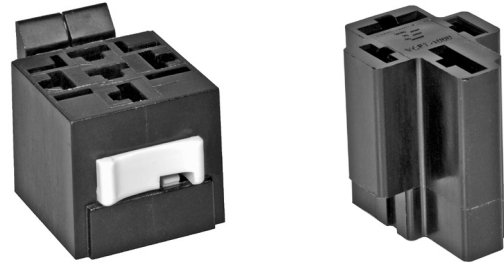


**Connectors for Mini (Shrouded) / Maxi ISO Relays**

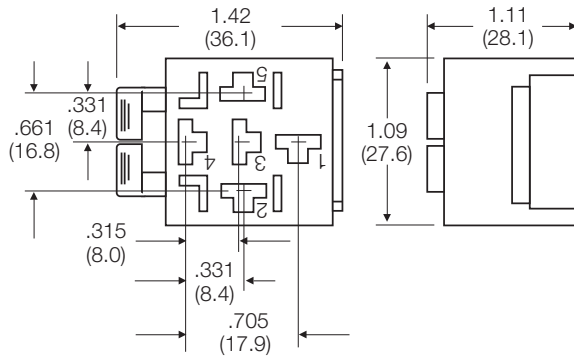
- **Connector VCF4-1003 for Mini (Shrouded) ISO Relays**  
Five position connector with snap-in terminal position assurance lock (ships unassembled).  
Integral tab interlocks connector and relay.
- **Connector VCF7-1000 for Maxi ISO Relays**  
Four position connector has built-in features to lock in terminals.



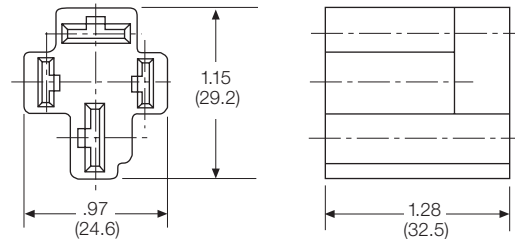
Technical Data	
Connector body material	
Connector VCF4-1003	Nylon
Connector VCF7-1000	Nylon
Weight	
Connector VCF4-1003	approx. 10.6g (0.37oz)
Connector VCF7-1000	approx. 6.6g (0.23oz)
Packaging/unit	
Connector VCF4-1003	50/box; 500/carton
Connector VCF7-1000	700/carton

**Dimensions**

**Connector VCF4-1003**  
Terminals to be ordered separately.



**Connector VCF7-1000**  
Terminals to be ordered separately.



Selection of fitting crimp terminals <sup>1) 2)</sup>							
Part numbers for connectors		Terminal size	Wire mm <sup>2</sup> (AWG)	Use for	Quantity required		Part number for crimp terminals
Product code	Part number				Form A	Form C	
VCF4-1003	1-1393305-3	6.3 x .8 (.25 x .032)	0.5 - 0.8 (20-18)	Coil	2	2	1-1393310-8 (26A1348A) <sup>3)</sup>
			1.3 - 2.1 (16-14)	Load	2	3	1-1393310-9 (26A1348B) <sup>3)</sup>
			3.3 - 5.3 (12-10)	Load	2	3	2-1393310-0 (26A1348C) <sup>3)</sup>
VCF7-1000	1393310-4	6.3 x .8 (.25 x .032)	0.8 - 2.1 (18-14)	Coil	2	—	42281-1 <sup>4)</sup>
			9.5 x 1.2 (.375 x .047)	Load	2	—	280756-4 <sup>5)</sup>
			9.5 x 1.2 (.375 x .047)	Load	2	—	280755-4 <sup>5)</sup>

1) Crimp terminals are to be ordered separately.  
 2) Mentioned crimp terminals are delivered in strip form. Loose pieces and hand tool available on request.  
 3) Brass, tin plated.  
 4) Brass.  
 5) Phosphor bronze, tin plated.

## X-ON Electronics

Largest Supplier of Electrical and Electronic Components

*Click to view similar products for [Relay Sockets & Fixings](#) category:*

*Click to view products by [TE Connectivity](#) manufacturer:*

Other Similar products are found below :

[00008258500](#) [00111976502](#) [0000-825-81-00](#) [60SY4S05](#) [M41G](#) [670-0125](#) [670-0127](#) [6700152](#) [670-0153](#) [6700156](#) [D258-2TS00](#) [70-309](#) [7-1393143-3](#) [7-1616360-5](#) [8000-DG2-5](#) [911361](#) [9-1616339-5](#) [PJF11N](#) [GDA12HA](#) [GDA12HD](#) [GDA12SA](#) [GDA12SD](#) [GDA16HD](#) [GDA22HA](#) [GDA95A](#) [GDA95D](#) [GFX20](#) [PT08QN](#) [PT 1/8 D = 3.2](#) [GUA1](#) [GUA2-11](#) [GUA4-04](#) [GUA4-31](#) [GUM5R](#) [GUR-120](#) [GUR-24](#) [GUR-240](#) [GUR-277](#) [GURX-277](#) [GUW12](#) [GUW95](#) [GUZ63L](#) [R99-11 FOR MY\(NAMEPLATE\)](#) [D52PR2T](#) [RES100K](#) [1310H-HDC](#) [1390H-1ST](#) [1393824-3](#) [1390H-2PC](#) [1410-2SM](#)