

THIS DRAWING IS UNPUBLISHED.

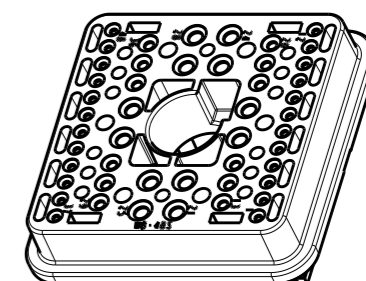
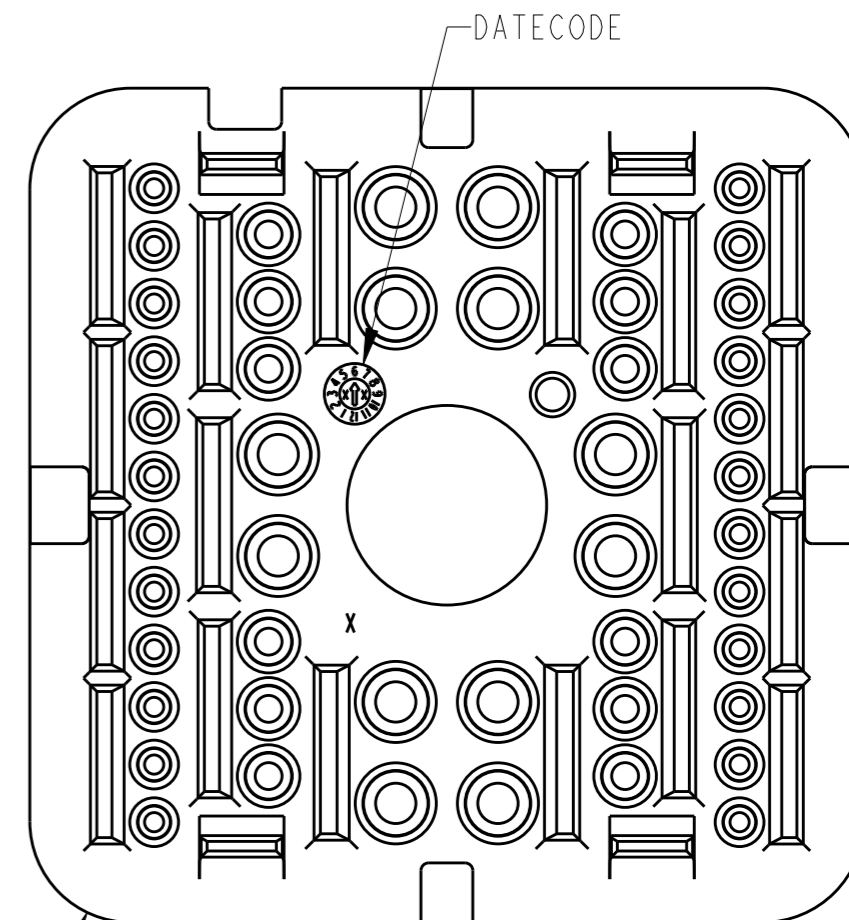
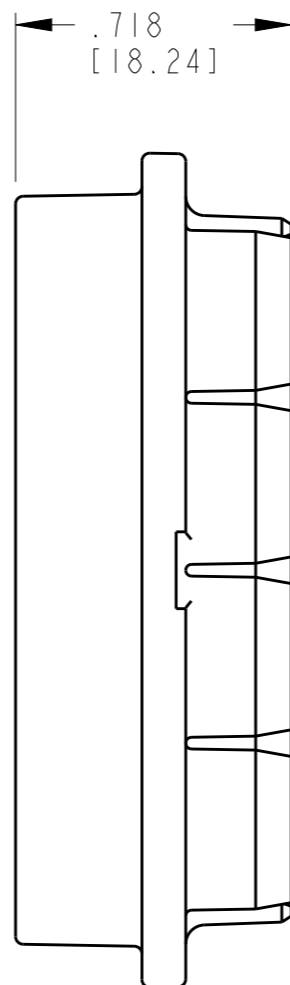
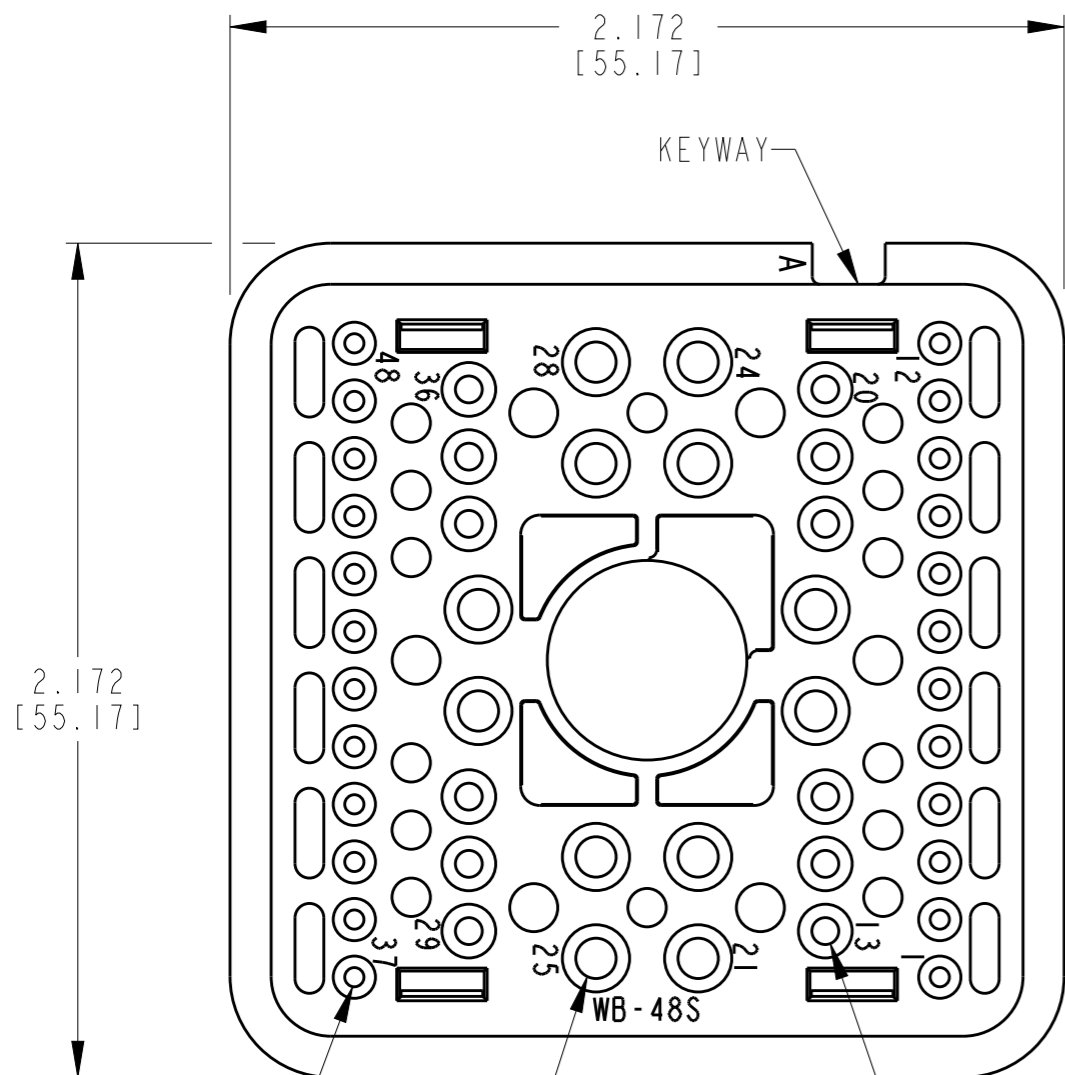
RELEASED FOR PUBLICATION

2001

© COPYRIGHT 2019 TE Connectivity. All Rights Reserved. ALL RIGHTS RESERVED.

REVISIONS

| P | LTR | DESCRIPTION | DATE | DWN | APVD |
|---|-----|-----------------------------|-----------|-----|------|
| | A | REVISED PER PCN-E-18-014449 | 09OCT2018 | AJ | DM |
| | | | | | |
| | | | | | |



SIZE 20 24PL
 SIZE 12 12PL
 SIZE 16 12PL

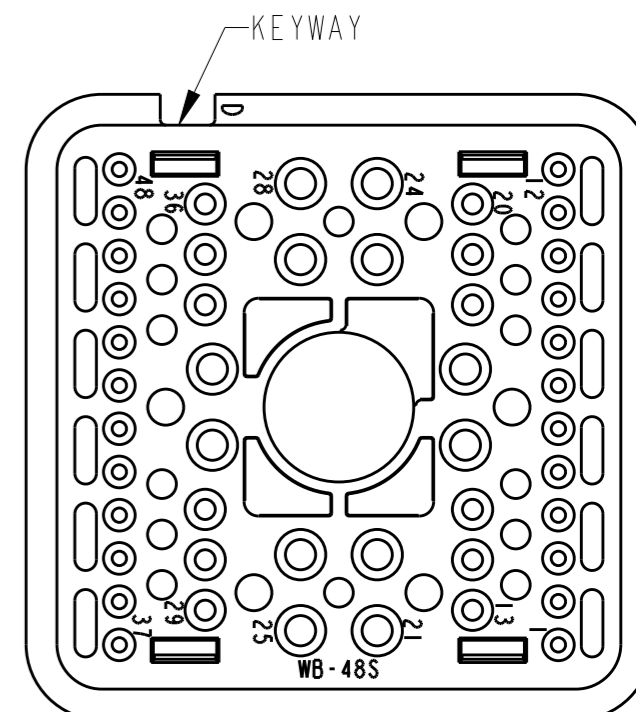
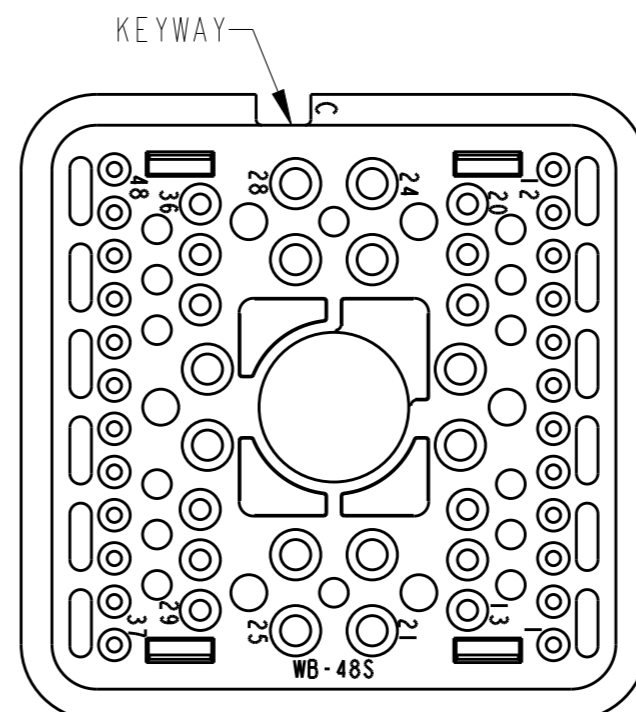
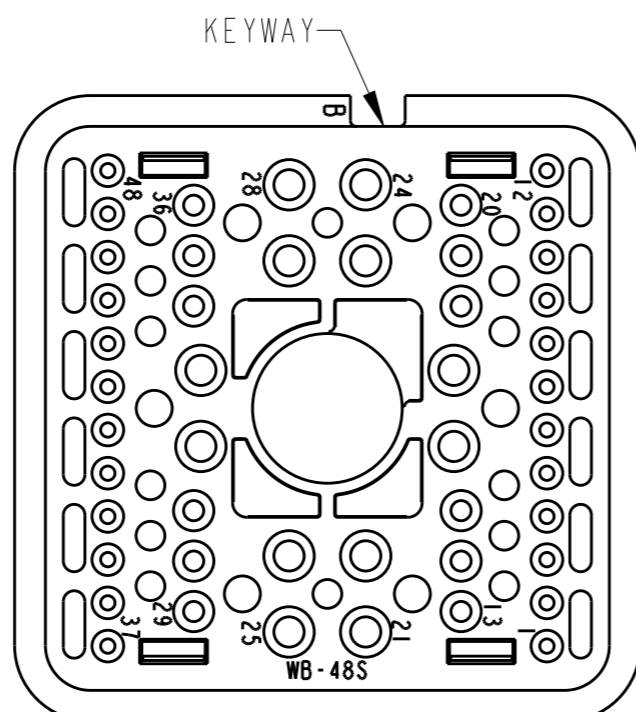
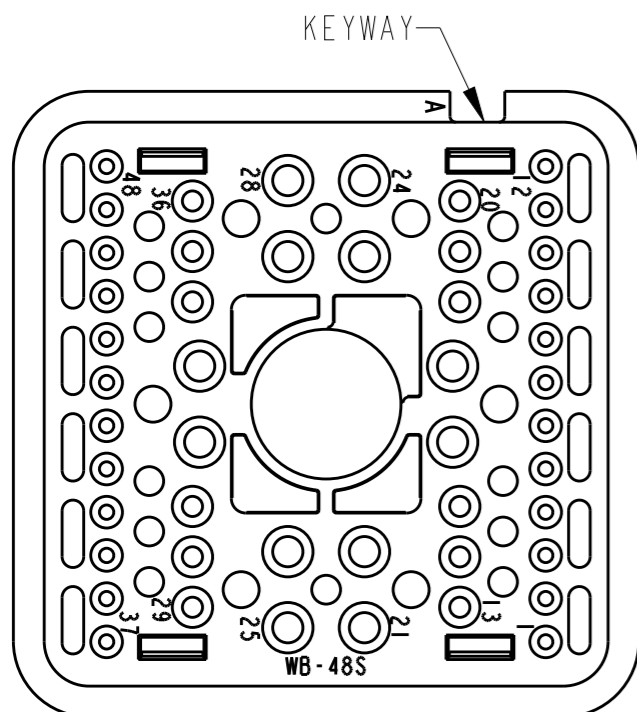
- 3. SEE SHEET 2 FOR OTHER KEY ARRANGEMENTS.
- 2. MATERIAL: PBT GF30
- 1. THIS WEDGE LOCK MATES WITH DRB16-48SX(N)E-XXXX PLUG (X = A,B,C,D KEYS; XXXX = ALL MODIFICATIONS). CONSULT FACTORY FOR MODS.

NOTES:

| | | | | | | | | | | | | | | | | |
|---|--------------|-------------------------------|---|-----------------------|---|-------|---|-------|--------------|-------|---|--------|---|-------------------|------------|--|
| THIS DRAWING IS A CONTROLLED DOCUMENT. | | DWN S. PALLUTH 02/28/01 | TE Connectivity | | | | | | | | | | | | | |
| DIMENSIONS: in [mm] | | CHK A. ROLINKS 03/07/01 | | | | | | | | | | | | | | |
| TOLERANCES UNLESS OTHERWISE SPECIFIED: | | APVD D. MEYER 03/07/01 | NAME WEDGE LOCK, PLUG 48 CONTACTS KEY ARRANGEMENTS A, B, C, & D DRB SERIES | | | | | | | | | | | | | |
| <table border="0"> <tr> <td>0 PLC</td> <td>±</td> </tr> <tr> <td>1 PLC</td> <td>±</td> </tr> <tr> <td>2 PLC</td> <td>±</td> </tr> <tr> <td>3 PLC</td> <td>±.025 [0.64]</td> </tr> <tr> <td>4 PLC</td> <td>±</td> </tr> <tr> <td>ANGLES</td> <td>±</td> </tr> </table> | | 0 PLC | ± | 1 PLC | ± | 2 PLC | ± | 3 PLC | ±.025 [0.64] | 4 PLC | ± | ANGLES | ± | PRODUCT SPEC - | SIZE A3 | |
| 0 PLC | ± | | | | | | | | | | | | | | | |
| 1 PLC | ± | | | | | | | | | | | | | | | |
| 2 PLC | ± | | | | | | | | | | | | | | | |
| 3 PLC | ±.025 [0.64] | | | | | | | | | | | | | | | |
| 4 PLC | ± | | | | | | | | | | | | | | | |
| ANGLES | ± | | | | | | | | | | | | | | | |
| MATERIAL | | APPLICATION SPEC - | CAGE CODE 00779 | DRAWING NO WB-48SX | | | | | | | | | | | | |
| FINISH | | WEIGHT 33.12 gr | RESTRICTED TO - | | | | | | | | | | | | | |
| CUSTOMER DRAWING | | | SCALE 2:1 | SHEET 1 OF 2 | | | | | | | | | | | | |
| | | | REV A | | | | | | | | | | | | | |

REVISIONS

| P | LTR | DESCRIPTION | DATE | DWN | APVD |
|---|-----|-------------|------|-----|------|
| - | - | SEE SHEET 1 | - | - | - |
| | | | | | |
| | | | | | |


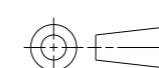


WB-48SA
KEY ARRANGEMENT -A-
COLOR: GREY

WB-48SB
KEY ARRANGEMENT -B-
COLOR: BLACK

WB-48SC
KEY ARRANGEMENT -C-
COLOR: GREEN

WB-48SD
KEY ARRANGEMENT -D-
COLOR: BROWN

| | | | | |
|---|--|--------------------------------|---|--------------------|
| THIS DRAWING IS A CONTROLLED DOCUMENT. | | DWN S. PALLUTH 02/28/01 |  TE Connectivity | |
| DIMENSIONS: in [mm] | | CHK A. ROLINKSI 03/07/01 | | |
|  | | APVD D. MEYER 03/07/01 | NAME WEDGE LOCK, PLUG 48 CONTACTS KEY ARRANGEMENTS A, B, C, & D DRB SERIES | |
| TOLERANCES UNLESS OTHERWISE SPECIFIED: | | PRODUCT SPEC | RESTRICTED TO | |
| 0 PLC ± | | APPLICATION SPEC | SIZE A3 | CAGE CODE 00779 |
| 1 PLC ± | | WEIGHT 33.12 gr | DRAWING NO WB-48SX | |
| 2 PLC ± | | CUSTOMER DRAWING | SCALE 2:1 | SHEET 2 OF 2 |
| 3 PLC ±.025 [0.64] | | | | REV A |
| 4 PLC ± | | | | |
| ANGLES ± | | | | |
| MATERIAL | | | | |
| FINISH | | | | |

X-ON Electronics

Largest Supplier of Electrical and Electronic Components

Click to view similar products for [Automotive Connectors](#) category:

Click to view products by [TE Connectivity](#) manufacturer:

Other Similar products are found below :

[003-018-000](#) [60403001](#) [60993906-B](#) [M902-2131](#) [M902-2161](#) [M902-2344](#) [72.330.1035.1](#) [73.353.4028.0](#) [F119300-B](#) [F166900](#) [F258300-B](#)
[F358300-B](#) [F407400](#) [F444110](#) [F487000](#) [F509500B-B](#) [827153-1](#) [8N1515-32-24P](#) [9-1326729-8](#) [925474-1](#) [928905-1](#) [964562-4](#) [968782-1](#)
[GT17SA-8DS-HU](#) [98891-1012](#) [98947-1016](#) [12004147](#) [12004475-L](#) [12010290](#) [12010309-B](#) [12015454](#) [12020219-B](#) [12041318-B](#) [12052225-](#)
[L](#) [12052466](#) [12064869](#) [12004327-B](#) [12015308](#) [12015384](#) [12015909](#) [1-21030-1](#) [12041254](#) [12041318](#) [12047946-B](#) [12047957](#) [12047957-L](#)
[12059473](#) [12066261](#) [12110546](#) [12110546-B](#)