



WP Gloss White Polyester Labels

Technical Datasheet

TTDS-073 Revision 6 - January 2019

WP is a thermal transfer printable white polyester label, which has been designed for general purpose applications that require a high durability white label.

WP is supplied with a permanent acrylic adhesive and a glassine liner, and is ideal for bar coding, PCB and component labelling. WP is resistant to a variety of industrial solvents while maintaining excellent print quality. This product is UL listed. Print performance and durability can only be guaranteed when printed using TE Connectivity printers ribbons and software, as shown in TE Connectivity Printer Ribbon Matrix 411-121005.

WP labels are available as part of a complete identification system. The system comprises specific printers, thermal transfer ribbons and WINTOTAL and Print Easy software.

WP GLOSS WHITE POLYESTER LABELS

Features

- Thermal Transfer Printable
- Specially designed ink receptive top coat to improve mark permanence
- Excellent chemical resistance
- Permanent Acrylic adhesive
- Suitable for a variety of surfaces
- Colours available

Temperature Rating

- Operating Temperature Range
–40°C to 150°C (-40°F to 302°F)
- Minimum Application Temperature 10°C (50°F)

Specifications / Approvals

Industry

UL MH17292 Group PGJ12 (WP1)
UL MH17292 Group PGJ18 (WP1)

Applications

- Bar coding
- PCB component labelling
- Industrial and Commercial applications
- General Purpose Labelling Applications

Design for Environment

- Does not contain any declarable or prohibited substances from the UNIFE Railway Industry Substances List
- Further information and a downloadable declaration covering RoHS and REACH compliance can be found at the TE Product Compliance Support Centre:

<http://www.te.com/usa-en/utilities/product-compliance.html>

Shelf Life

2 years when following good commercial storage practice detailed below

Storage

Product should be stored in the original packaging, with any plastic covers which were included during shipping. Store out of direct sunlight in a clean, dry, dust free, environment. Product should not be stored outside of the designed storage temperature, which is -10°C (14°F) to +40°C (104°F).



PAGE 2

Technical Performance

	Requirement / Method	Result	
Print Permanence			
Marking of Electrical Insulating Materials	SAE AS 5942, 1Kg, 50 rubs	Pass	
Resistance to Solvents	MIL STD 202 Method 215	Pass	
TE industrial fluids			
• Isopropyl alcohol	TE doc 109-121012, 24 hours immersion 23°C followed by 20 rubs, minimum print contrast 3*, legible.	Pass	
• IRM 902		Pass	
• MIL PRF 23699		Pass	
• Skydrol LD4		Pass	
• MIL-H-83282		Pass	
• Diesel Fuel		Pass	
• Kilfrost DF plus		*Print contrast as defined in	Pass
• Tap water		TE doc.411-121002	Pass
• 5% Salt solution			Pass
• Detergent (1% Teepol)			Pass
Adhesion			
	FTM 1 (180°), 72 hour dwell	Adhesion	
• Stainless steel		19 N/25 mm (69 oz/in)	
• Glass		19 N/25 mm (69 oz/in)	
• Aluminium		13 N/25 mm (46 oz/in)	
• Polypropylene		12 N/25 mm (45 oz/in)	
• Epoxy Painted Surface		21 N/25 mm (75 oz/in)	

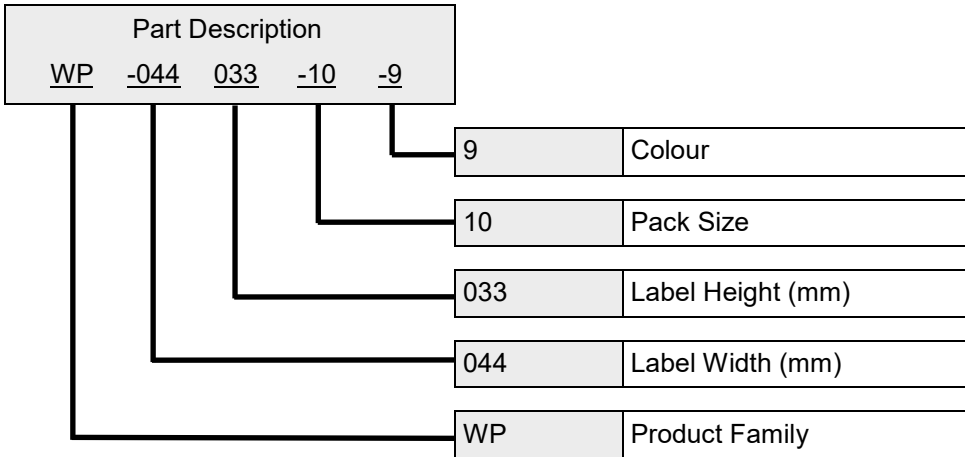
Typical Label Thickness Details

- Facestock: 0.05 mm / 0.0020 inch
- Adhesive: 0.022 mm / 0.0087 inch
- Liner: 0.056 mm / 0.0022 inch

Solder Immersion

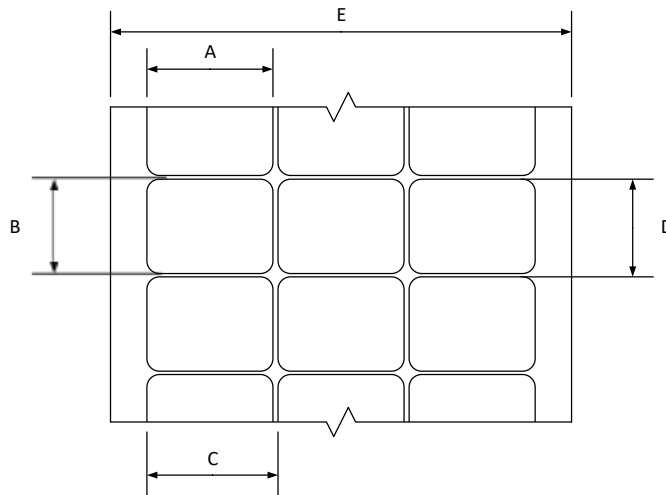
After 10-second immersion at 250°C (480°F) in molten (lead free) solder: slight yellowing and print remains legible

Where possible, TE have tested product as a finished item, including the print. Operational tests are followed by an assessment of mark adherence to validate fit form and function.

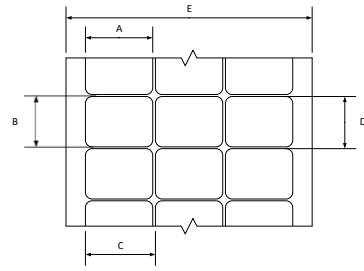


Specify product name, Label width (mm), Label Height (mm), Pack Size (in thousands), Colour (e.g. -9 = White)

Ordering Information

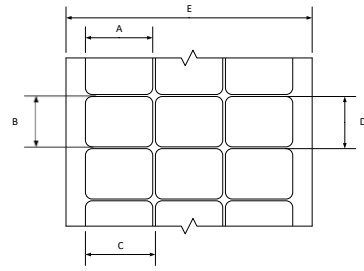


Ordering Description	Pack Size	Labels Across	Label Width A (mm) (inches)	Label Height B (mm) (inches)	Horizontal Repeat C (mm) (inches)	Vertical repeat D (mm) (inches)	Web Width E (mm) (inches)
WP-040040-25-9	25.000	20	4.0 0.157	4.0 0.157	4.0 0.157	7.2 0.281	86.0 3.380
WP-064064-25-9	25.000	12	6.4 0.250	6.4 0.250	6.4 0.250	9.5 0.375	82.2 3.240
WP-080080-10-9	10.000	8	8.0 0.315	8.0 0.315	9.9 0.390	13.3 0.525	83.3 3.280
WP-089047-10-9	10.000	5	8.9 0.350	4.7 0.185	11.4 0.450	7.9 0.313	60.6 2.386
WP-095080-25-9	25.000	5	9.5 0.375	8.0 0.315	12.2 0.480	12.7 0.500	64.3 2.531
WP-095095-10-9	10.000	7	9.5 0.375	9.5 0.375	11.1 0.437	12.7 0.500	82.1 3.230
WP-127111-10-9	10.000	5	12.7 0.500	11.1 0.437	16.8 0.662	14.3 0.563	86.0 3.380
WP-127127-10-9	10.000	5	12.7 0.500	12.7 0.500	15.9 0.625	15.9 0.625	82.6 3.250
WP-165051-25-9	25.000	4	16.5 0.650	5.1 0.200	17.8 0.700	8.3 0.325	75.8 2.990



Ordering Information

Ordering Description	Pack Size	Labels Across	Label Width A (mm) (inches)	Label Height B (mm) (inches)	Horizontal Repeat C (mm) (inches)	Vertical repeat D (mm) (inches)	Web Width E (mm) (inches)
WP-165102-10-9	10.000	5	16.5 0.650	10.2 0.400	19.1 0.750	13.8 0.545	99.1 3.900
WP-171171-10-9	10.000	5	17.1 0.674	17.1 0.674	19.7 0.774	20.3 0.800	101.8 4.006
WP-178095-10-9	10.000	4	17.8 0.700	9.5 0.375	19.1 0.750	12.7 0.500	80.9 3.190
WP-191064-10-9	10.000	4	19.1 0.750	6.4 0.250	21.6 0.850	9.5 0.375	89.9 3.540
WP-191114-15-9	15.000	3	19.1 0.750	11.4 0.450	22.2 0.875	14.7 0.579	69.5 2.736
WP-203127-10-9	10.000	4	20.3 0.800	12.7 0.500	22.9 0.900	15.9 0.625	94.6 3.730
WP-229064-10-9	10.000	3	22.9 0.900	6.4 0.250	28.6 1.125	9.5 0.375	86.0 3.390
WP-254045-10-9	10.000	3	25.4 1.000	4.6 0.180	31.8 1.250	8.5 0.333	95.3 3.750
WP-254064-10-9	10.000	3	25.4 1.000	6.4 0.250	27.9 1.100	9.5 0.375	87.3 3.436
WP-254097-10-9	10.000	3	25.4 1.000	9.7 0.380	27.9 1.100	12.7 0.500	87.4 3.440
WP-254127-10-9	10.000	3	25.4 1.000	12.7 0.500	27.9 1.100	16.9 0.666	87.4 3.440
WP-254254-10-9	10.000	3	25.4 1.000	25.4 1.000	27.9 1.100	28.6 1.125	87.4 3.440
WP-305047-10-9	10.000	2	30.5 1.200	4.7 0.185	33.0 1.300	7.8 0.306	69.5 2.736
WP-318064-10-9	10.000	1	31.8 1.250	6.4 0.250	N/A N/A	9.5 0.375	37.9 1.490
WP-318097-10-9	10.000	1	31.8 1.250	9.7 0.380	N/A N/A	12.7 0.500	37.8 1.488
WP-381064-10-9	10.000	1	38.1 1.500	6.4 0.250	N/A N/A	9.5 0.375	44.5 1.750
WP-381127-5-9	5.000	2	38.1 1.500	12.7 0.500	44.2 1.740	15.9 0.630	88.2 3.470
WP-381191-5-9	5.000	2	38.1 1.500	19.1 0.750	43.2 1.700	22.2 0.875	87.6 3.450
WP-381381-2.5-9	2.500	2	38.1 1.500	38.1 1.500	44.5 1.750	40.8 1.610	88.9 3.500
WP-381635-5-9	5.000	2	38.1 1.500	63.5 2.500	40.6 1.600	66.7 2.630	84.7 3.340
WP-406254-1.5-9	1.500	2	40.6 1.600	25.4 1.000	55.9 2.200	38.1 1.500	102.9 4.050
WP-445064-10-9	10.000	1	44.5 1.750	6.4 0.250	N/A N/A	9.5 0.375	50.4 1.986
WP-445102-5-9	5.000	1	44.5 1.750	10.2 0.400	N/A N/A	12.7 0.500	50.4 1.986
WP-445445-2-9	2.000	1	44.5 1.750	44.5 1.750	N/A N/A	47.6 1.875	50.4 1.986
WP-478175-5-9	5.000	1	47.8 1.880	17.5 0.690	N/A N/A	24.4 0.962	66.0 2.600
WP-508064-10-9	10.000	1	50.8 2.000	6.4 0.250	N/A N/A	9.5 0.375	56.9 2.240
WP-508095-5-9	5.000	1	50.8 2.000	9.5 0.375	N/A N/A	12.7 0.500	57.2 2.250
WP-508127-5-9	5.000	1	50.8 2.000	12.7 0.500	N/A N/A	15.9 0.625	56.9 2.240
WP-508254-5-9	5.000	1	50.8 2.000	25.4 1.000	N/A N/A	28.6 1.125	57.2 2.250
WP-508318-2.5-9	2.500	1	50.8 2.000	31.8 1.250	N/A N/A	34.9 1.375	56.9 2.240
WP-508508-3-9	3.000	1	50.8 2.000	50.8 2.000	N/A N/A	54.6 2.150	54.0 2.130
WP-523841-1.5-9	1.500	1	52.3 2.060	84.1 3.310	N/A N/A	88.9 3.500	58.2 2.290
WP-610419-2.5-9	2.500	1	61.0 2.400	41.9 1.650	N/A N/A	45.5 1.792	67.3 2.650



Ordering Information

Ordering Description	Pack Size	Labels Across	Label Width A (mm) (inches)	Label Height B (mm) (inches)	Horizontal Repeat C (mm) (inches)	Vertical repeat D (mm) (inches)	Web Width E (mm) (inches)
WP-699191-5-9	5.000	1	69.9 2.750	19.1 0.750	N/A N/A	23.3 0.917	76.2 3.000
WP-699254-5-9	5.000	1	69.9 2.750	25.4 1.000	N/A N/A	28.6 1.125	76.2 3.000
WP-762254-5-9	5.000	1	76.2 3.000	25.4 1.000	N/A N/A	28.6 1.125	82.3 3.240
WP-762381-2.5-9	2.500	1	76.2 3.000	38.1 1.500	N/A N/A	41.3 1.625	82.3 3.240
WP-762508-2.5-9	2.500	1	76.2 3.000	50.8 2.000	N/A N/A	54.0 2.125	82.6 3.240
WP-762127-1-9	1.000	1	76.2 3.000	127.0 5.000	N/A N/A	129.5 5.100	79.4 3.130
WP-101508-2.5-9	2.500	1	101.6 4.000	50.8 2.000	N/A N/A	54.6 2.150	104.1 4.100
WP-101635-2.5-9	2.500	1	101.6 4.000	63.5 2.500	N/A N/A	66.7 2.625	107.7 4.240
WP-101762-1.8-9	1.800	1	101.6 4.000	76.2 3.000	N/A N/A	79.4 3.125	104.1 4.100
WP-101101-1.3-9	1.300	1	101.6 4.000	101.6 4.000	N/A N/A	104.8 4.125	104.1 4.100
WP-101165-0.85-9	850	1	101.6 4.000	165.1 6.500	N/A N/A	168.3 6.680	104.9 4.130

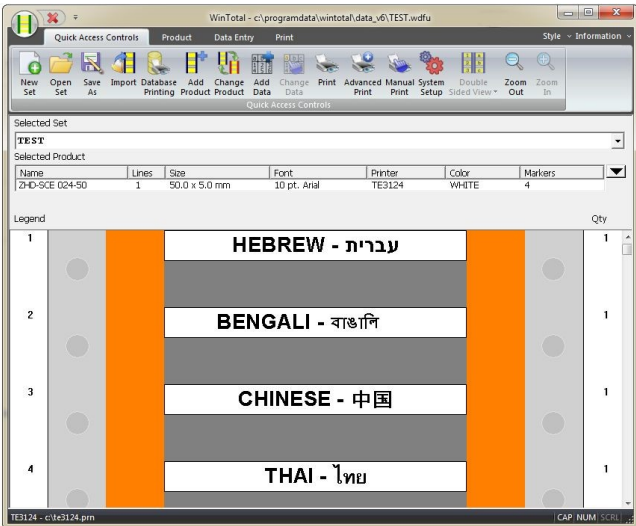


Printer Information

Print quality and print performance can only be guaranteed when specific TE printer and ribbons are used.

The current list of printers and ribbons can be found in TE document 411-121005 'Identification Printer Product Ribbon Matrix'. This document can be found in 'Access Our Tools':

<http://www.te.com/usa-en/utilities/access-product-tools>



Software

WINTOTAL software, available to download for a 14 day evaluation period from the Identification Printer Software page:

<http://www.te.com/usa-en/products/identification-labeling/printers-software/printing-software.html?tab=pgp-story>

Print Easy software also available

Contact a TE representative for further information



www.te.com/rail

TE Connectivity, TE Connectivity (logo) and Every Connection Counts are trademarks. All other logos, products and/or company names referred to herein might be trademarks of their respective owners.

The information given herein, including drawings, illustrations and schematics which are intended for illustration purposes only, is believed to be reliable. However, TE Connectivity makes no warranties as to its accuracy or completeness and disclaims any liability in connection with its use. TE Connectivity's obligations shall only be as set forth in TE Connectivity's Standard Terms and Conditions of Sale for this product and in no case will TE Connectivity be liable for any incidental, indirect or consequential damages arising out of the sale, resale, use or misuse of the product. Users of TE Connectivity products should make their own evaluation to determine the suitability of each such product for the specific application.

© 2015 TE Connectivity Ltd. family of companies All Rights Reserved.

X-ON Electronics

Largest Supplier of Electrical and Electronic Components

Click to view similar products for [Printers category](#):

Click to view products by [TE Connectivity manufacturer](#):

Other Similar products are found below :

[897252-000](#) [CU0620-000](#) [F39639-000](#) [FTP-648MCL570](#) [PTMBL1912A](#) [PWC-L07A1-W1-E](#) [DPU-V445-10B-E](#) [D-SCE-12-50-S1-4](#) [D-SCE-3.2-50-S1-4](#) [IF2302-01UK-E](#) [IF9001-01P-E](#) [IFC-001K](#) [2000P-RIBBON-4AG-MED](#) [206868-000](#) [OP-LH200A-E](#) [LB1256-E](#) [LM-1/4-TUBE-WE](#) [308-LE](#) [SMS-V-19-9](#) [ACUH205A-E](#) [1813390001](#) [FTP-040P001](#) [FTP-628CU601R](#) [PW-C0725-W2-U](#) [HANDHELD-TMS-3.9-9](#) [3045950001](#) [351013-000](#) [RH-48-00-E](#) [4775630001](#) [TSK-508406-2.5CS8982](#) [TTC-PRINTER-PRINthead-300](#) [HW-762254-5-9](#) [IF2301-01B](#) [IFC-001K-E](#) [IFH001-01B](#) [LM-1/2-TUBE-WE](#) [DPU-D3-01A-E](#) [D-SCE-12-50-9](#) [D-SCE-4.8-50-4](#) [094514-000](#) [E64127-000](#) [ED4839-000](#) [T200-IDENT-DR4-DRIVEROLLER](#) [CP3963-000](#) [2000P-RIBBON-4AG-NAR](#) [2000P-RIBBON-WH-MED](#) [U001023895X1](#) [FTP-624Y002](#) [ED4098-000](#) [NC-LSC05](#)