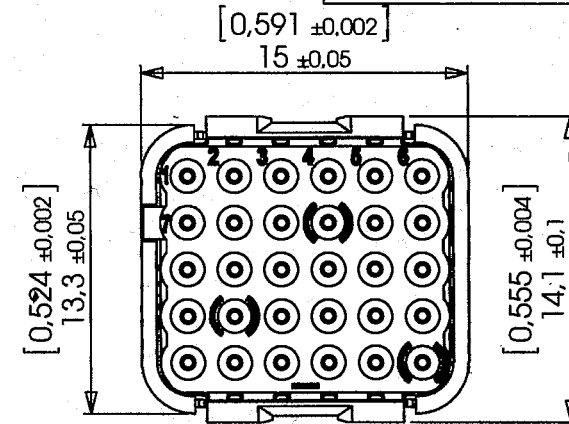
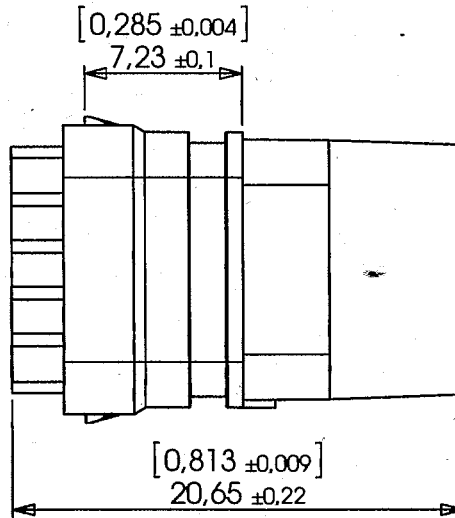
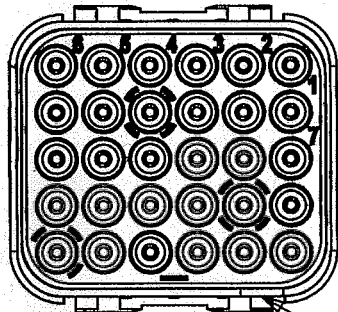


DMC-MR 30-23 PX

Dimensions externes suivant EN4165-003
External dimensions according to EN4165-003

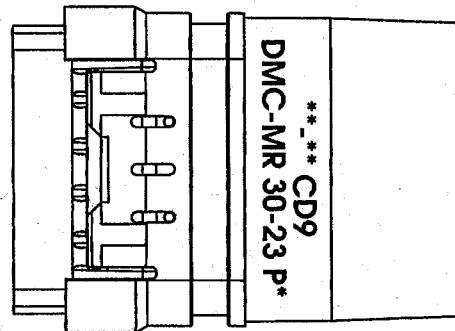
EX



X: Codage A,B,C,D,E,F,G,H ou N
X: Keying A,B,C,D,E,F,G,H,or N
(1)

CARACTERISTIQUES:

Température d'utilisation: -55°C à +175°C
Matériaux: Thermoplastique, silicone fluoré violet
Masse: 3,4g Maxi (Sans contact)
Dimensions: Millimètres (pouces)
Contacts:
- Mâle #23 câble cuivre - 182-4043-23
Outil insertion/extraction contacts:
-M81969/14-01



CHARACTERISTICS:

Operating temperature range: -55°C to +175°C
Materials: Thermoplastic and purple fluorosilicone
Weight: 3,4g Maxi (Without contact)
Dimensions: Millimeters [inches]
Contacts:
- Pin #23 for copper cable - 182-4043-23
Contacts insertion/extraction tool:
-M81969/14-01

Module livré avec contact mâle / Module delivered with pin contact

a		27/04/15	CREATION	SERIE DMC-M	DATE 27/04/2015	VISA Creation Created	VISA Approbation Approval	
Revision	Date	Observations	DESIGNATION	REF : P/N:	DMC-MR 30-23 PX (1)	-	-	
ORIGINE : ORIGIN :	DE156/13		Module femelle pour contact mâle #23 Socket module for #23 pin contact			VERSION	REVISION	
Connecteurs Electriques Deutsch 17, rue LAVOISIER - BP 117 - 27091 EVREUX CEDEX 09 - FRANCE				FICHE TECHNIQUE TECHNICAL DATA SHEET			204-19-C/01	

X-ON Electronics

Largest Supplier of Electrical and Electronic Components

Click to view similar products for [Rectangular MIL Spec Connectors](#) category:

Click to view products by [TE Connectivity](#) manufacturer:

Other Similar products are found below :

[006-1169-16](#) [CSR31343-0001-00000](#) [CSR31899-0001-00000](#) [CSR31900-0001-A0001](#) [CTJ-3D-05](#) [CTS-S16/16](#) [M55302/57A36X](#)
[M55302/58-A70Y](#) [65002-062](#) [65008-D08](#) [CY4602-000](#) [732-8020-01](#) [732-8021-02 B](#) [77058-22-55PN](#) [81542-20](#) [86.030.0053.0](#) [1241346-1](#)
[RM252-020-311-2900](#) [DMC-M 08-16 SNE](#) [1589051-4](#) [BACC65CAMA](#) [BACC65CAMN](#) [BACC65CP1PN](#) [BACI10BC1220PN](#) [EN4165A99-](#)
[011NB](#) [18023-9](#) [HSB-D4S03DM222X](#) [2217548-1](#) [891-009-15SA2-BRT1T](#) [SIM2S100A](#) [1604996-2](#) [SMD25PN90L-4055](#) [220A012-25225-0](#)
[22628-10-6P-791](#) [CSR31343-0001-A0001](#) [CSR31899-0001-A0001](#) [CSR31900-0001-00000](#) [33526M11-08PD](#) [RE04-212S](#) [CTD160E01F-](#)
[6148](#) [CTJ112E03B](#) [CTJ122E02D-8000](#) [CTJ-3D-12](#) [CTJ920E06N-513](#) [CTJ920E12N-513](#) [CTL-16-090](#) [CTR06-5100SY](#) [M55302/63A20H](#)
[M55302/66-30H](#) [M81714/63-22S W/PLUGS INS](#)