

# Cables

Cables

Model	Description	Type	TERMINATIONS		LENGTH		USE WITH:
			From	To	m	ft	
236-ILC-3	Safety Interlock	Shielded twisted pair	3-pin round	3-pin round	3	10	4200-SCS, 8007, 8008
237-ALG-2	Low Noise Input	Triax	3-slot male triax	Alligator clips (3)	2	6.6	Series 2200, Series 2600B, 4200-PA, 6220, 6221, 6482, 6487, 6514, 6517A, 6517B
237-ALG-15	Low Noise Input	Triax	3-slot male triax	Alligator clips (3)	15	50	Series 2200, Series 2600B, 4200-PA, 6220, 6221, 6482, 6487, 6514, 6517A, 6517B
248-MHV	High Voltage	Coax	SHV female	MHV male	3	10	248
248-SHV	High Voltage	Coax	SHV female	SHV female	3	10	248, CS-970
2000-MTC-2	Cable Assembly	Shielded twisted pair	DB44 female	Unterminated	2	6.6	2000-20
2000-MTCD-2	Cable Assembly	Shielded multiple conductors	DB44 female	DB50 male	2	6.6	2000-SCAN-20
2600-ALG-2	Low Noise Input	Triax	3-slot male triax	Alligator clips (3)	2	6.6	2635B, 2636B, 4200-PA
2651A-KIT-1	Cable Assembly	Coax	2-pin plug	2-pin plug	1	3.3	2651A, 8011
2651A-KIT-2	Cable Assembly	Coax	2-pin plug	2-pin plug	2	6.6	2651A, 8011
2651A-KIT-3	Cable Assembly	Coax	2-pin plug	2-pin plug	3	10	2651A, 8011
2107-4	Input Cable	Shielded twisted pair	LEMO	Copper spade lugs (4)	1.2	4	2182A
2107-30	Input Cable	Shielded twisted pair	LEMO	Copper spade lugs (4)	9.1	30	2182A, Series 2200
2107-50	Input Cable	Shielded twisted pair	LEMO	Copper spade lugs (4)	15	50	2182A, Series 2200
3720-MTC-1.5	Mass Terminated Assembly	Twisted pair	D-sub female	78-pin D-sub male	1.5	5	3720, 3723, 3724
3720-MTC-3	Mass Terminated Assembly	Twisted pair	D-sub female	78-pin D-sub male	3	10	3720, 3723, 3724
3721-MTC-1.5	Mass Terminated Assembly	Twisted pair	D-sub female	50-pin D-sub male	1.5	5	3721, 3730, 3731, 3740, 3750
3721-MTC-3	Mass Terminated Assembly	Twisted pair	D-sub female	50-pin D-sub male	3	10	3721, 3730, 3731, 3740, 3750
3722-MTC-1.5	Mass Terminated Assembly	Twisted pair	D-sub male	104-pin D-sub female	1.5	5	3722
3722-MTC-1.5/MM	Mass Terminated Assembly	Twisted pair	D-sub male	104-pin D-sub male	1.5	5	3722
3722-MTC-3	Mass Terminated Assembly	Twisted pair	D-sub male	104-pin D-sub female	3	10	3722
3722-MTC-3/MM	Mass Terminated Assembly	Twisted pair	D-sub male	104-pin D-sub male	3	10	3722
3732-MTC-1.5	Mass Terminated Assembly	Twisted pair	D-sub female	78-pin D-sub male	1.5	5	3732
3732-MTC-3	Mass Terminated Assembly	Twisted pair	D-sub female	78-pin D-sub male	3	10	3732
4200-MTRX-1	Ultra Low Noise	SMU triax	Miniature male	3-slot male	1	3.2	4200-SCS
4200-MTRX-2	Ultra Low Noise	SMU triax	Miniature male	3-slot male	2	6.5	4200-SCS
4200-MTRX-3	Ultra Low Noise	SMU triax	Miniature male	3-slot male	3	9.8	4200-SCS
4200-PRB-C	Cable Assembly	Y adapter cable	Female SMA	2 female SSMC			4200-PIV, 4210-CVU
4200-RPC-0.3	Cable Assembly	Remote PreAmp	DB15	DB15	0.3	1	4200-PA
4200-RPC-2	Cable Assembly	Remote PreAmp	DB15	DB15	2	6.5	4200-PA
4200-RPC-3	Cable Assembly	Remote PreAmp	DB15	DB15	3	9.8	4200-PA
4200-RPC-6	Cable Assembly	Remote PreAmp	DB15	DB15	6	19.6	4200-PA
4200-TRX-0.3	Ultra Low Noise	PreAmp triax	3-slot male	3-slot male	0.3	1ft	4200-PA
4200-TRX-1	Ultra Low Noise	PreAmp triax	3-slot male	3-slot male	1	3.2	4200-PA
4200-TRX-2	Ultra Low Noise	PreAmp triax	3-slot male	3-slot male	2	6.5	4200-PA
4200-TRX-3	Ultra Low Noise	PreAmp triax	3-slot male	3-slot male	3	9.8	4200-PA
4801	Low Noise Input	Coax	Male BNC	Male BNC	1.2	4	6482, 6485, 7158
4802-10	Low Noise Input	Coax	Male BNC	Unterminated	3	10	6482, 6485, 7158
4803	Low Noise Cable Kit	Coax	Male BNC (10)	Female BNC (5)	15.2	50	6482, 6485, 7158
6011	Input Leads	Triax	2-slot male triax	Alligator clips (3)	1.5	5	Instruments with 2-slot triax connectors
6011-10	Input Leads	Triax	2-slot male triax	Alligator clips (3)	3	10	Instruments with 2-slot triax connectors
6517-ILC-3	4-pin Interlock Cable	Shielded	4-pin female DIN	4-pin female DIN	1	3.3	6517A, 8009
6517B-ILC-3	Interlock Cable	Shielded	4-pin Phoenix	4-pin DIN	1	3.3	6517B, 8009
7009-5	Shielded RS-232	Shielded	Male DB-9	Female DB-9	1.5	5	All RS-232 capable instruments
7011-MTC-1	Mass Terminated Assembly	Twisted pair (45)	96-pin female	96-pin female	1	3.3	7011-C, 7012-C, 7013-C, 7015-C, 7018-C
7011-MTC-2	Mass Terminated Assembly	Twisted pair (45)	96-pin female	96-pin female	2	6.6	7011-C, 7012-C, 7013-C, 7015-C, 7018-C
7019C-MTCI-2	Kelvin Instrument Cable	Shielded twisted pair	Card connector	Shielded banana plug cables (6)	2	6.6	Series 2400
7020-MTC-2	Mass Terminated Assembly	Twisted pair (45)	96-pin female	96-pin female	2	6.6	7020
7024-3	Low Noise	Triax	2-slot male triax	2-slot male triax	0.9	3	Instruments with 2-slot triax connectors
7024-10	Low Noise	Triax	2-slot male triax	2-slot male triax	3	10	Instruments with 2-slot triax connectors
7025-10	Low Noise Input	Triax	2-slot male triax	Unterminated	3	10	Instruments with 2-slot triax connectors
7035-MTC-2	Mass Terminated Assembly	Twisted pair (45)	96-pin female	96-pin female	2	6.6	7035
7036-MTC-2	Mass Terminated Assembly	Twisted pair (45)	96-pin female	96-pin female	2	6.6	7036
7051-*	BNC Interconnect	Coax	BNC	BNC			2015, 2016, 3390

ACCESSORIES

1.888.KEITHLEY (U.S. only)

[www.keithley.com](http://www.keithley.com)

**KEITHLEY**

A Greater Measure of Confidence

A Tektronix Company

# Cables

Model	Description	Type	TERMINATIONS		LENGTH		USE WITH:
			From	To	m	ft	
7078-DIN	707A Master/Slave	Twisted pair (9)	8-pin DIN	8-pin DIN	1.8	6	707A
7078-MTC-5	Mass Terminated Assembly	Twisted pair (12)	38-pin connector	38-pin connector	1.5	5	7071, 7071-4, 7074-D
7078-MTC-20	Mass Terminated Assembly	Twisted pair (12)	38-pin connector	38-pin connector	6.1	20	7071, 7071-4, 7074-D
7078-TRX-1	Low Noise	Triax	3-slot male triax	3-slot male triax	0.3	1	2635B, 2636B, 6482, 6487, 6514, 6517A, 6517B, 7072, 7174A
7078-TRX-3	Low Noise	Triax	3-slot male triax	3-slot male triax	0.9	3	2635B, 2636B, 6482, 6487, 6514, 6517A, 6517B, 7072, 7174A
7078-TRX-5	Low Noise	Triax	3-slot male triax	3-slot male triax	1.5	5	2635B, 2636B, 6482, 6487, 6514, 6517A, 6517B, 7072, 7174A
7078-TRX-10	Low Noise	Triax	3-slot male triax	3-slot male triax	3	10	2635B, 2636B, 6482, 6487, 6514, 6517A, 6517B, 7072, 7174A
7078-TRX-12	Low Noise	Triax	3-slot male triax	3-slot male triax	4	12	2635B, 2636B, 6482, 6487, 6514, 6517A, 6517B, 7072, 7174A
7078-TRX-20	Low Noise	Triax	3-slot male triax	3-slot male triax	6.1	20	2635B, 2636B, 6482, 6487, 6514, 6517A, 6517B, 7072, 7174A
7078-TRX-6IN	Low Noise	Triax	3-slot male triax	3-slot triax	0.15	0.5	6430
7152-MTC-2	Low Noise Matrix Expansion	Triax (5)	6-pin M-series coax	6-pin M-series coax	0.6	2	7152
7152-MTC-10	Low Noise Matrix Expansion	Triax (5)	6-pin M-series coax	6-pin M-series coax	3	10	7152
7152-TRX-10	Low Noise M-Series to Triax	Triax (5)	M-series connector	3-slot triax (5)	3	10	7152, 8006
7153-TRX	Low Noise M-Series to Triax	Triax (5)	M-series connector	3-slot triax (5)	2	6	7153
7173-50-CSEP	4-cable Set	Coax	SMB female	BNC male	0.6	2	7173-50
7705-MTC-2	Mass Terminated Assembly	Twisted pair (25)	D-sub male	D-sub female	2	6.6	7703, 7705, 7707, 7709
7711-BNC-SMA	5 SMA to BNC Cables	Coax	SMA Male	BNC Female	0.15	0.5	7711
7712-SMA-1	SMA Cables	Coax	SMA Male	SMA Male	1	3.3	7711, 7712, System 46, System 46T
7754-3	BNC	Coax	BNC Male	Alligator clips	0.9	3	Instruments with 2-slot BNC connectors
8007-GND-3	Safety Ground Wire	Single wire	Crimp lug	Crimp lug	3	10	8007
8542-301	LIV Cable	Multiple conductor	DB9 female	Multiple terminations: Triax (2500), 2 dual bananas (24XX) GND wire	1.8	6	2500, Series 2400, System 25, 8544, 8544-TEC
8607	1kV Test Cables	Single wire (2)	Safety banana	Safety banana	1	3.3	2410, 6487, 6517A, 6517B
CA-18-1	Shielded	Coax	Dual banana plug	Dual banana plug	1.2	4	Binding post inputs
CA-19-2	RG58	RG58	BNC male	BNC male	1.5	5	4200-SCS
CA-126-1A	Digital I/O	Shielded	DB25 male	DB25 female	1.5	5	Series 2600B, Series 3700A
CA-180-3A	Crossover Cable	Twisted pair	RJ45	RJ45	3	10	Series 2600B, 2701, 3390, Series 3700A, 6221, all TSP-enabled instruments
CA-321-1	Temperature Control Cable	Multiple conductor	DB15 female	8-position Phoenix (CS-846 equivalent)	1.8	6	2510, 8544
CA-322-1	Dual Temperature Control Cable	Multiple conductor	DB15 female	Y cable to two 8-position Phoenix (CS-846)	1.8	6	2510, 8544, 8544-TEC
CA-404B	RG188	Coax	SMA male	SMA male	2	6.5	4200-SCS
CA-405B	RG188	Coax	SMA male	SMA male	0.15	0.5	4200-SCS
CA-406B	RG188	Coax	SMA male	SMA male	0.33	1.08	4200-SCS
CA-446A	Cable Assembly	Coax	SMA male	SMA male	3	9.8	4210-CVU
CA-447A	Cable Assembly	Coax	SMA male	SMA male	1.5	5	4210-CVU
CA-451A	RG188	Coax	SMA male	SMA male	0.108	0.35	4200-SCS
CA-452A	RG188	Coax	SMA male	SMA male	0.203	8 in.	4200-SCS
CA-557-1A	Cable Assembly	Multiple conductor	8-pin receptacle	8-pin receptacle	1	3.3	2651A, 8011
CA-557-2A	Cable Assembly	Multiple conductor	8-pin receptacle	8-pin receptacle	2	6.6	2651A, 8011
CA-557-3	Cable Assembly	Multiple conductor	8-pin receptacle	8-pin receptacle	3	10	2651A, 8011
CA-558-x	Interlock Cable	Twisted pair (2)	25-pin D-sub	3-pin	1, 2, 3	3.3, 6.6, 10	Series 2600B, 2657A
CA-559-0A	Black Banana Jumper	Jumper	Banana	Banana	0.102	4 in.	8010
CA-559-2A	Red Banana Jumper	Jumper	Banana	Banana	0.102	4 in.	8010
CA-560-0A	Banana Plug Jumper Cable	Jumper	Banana	Banana	0.203	8 in.	8010
CA-560-2A	Banana Plug Jumper Cable	Jumper	Banana	Banana	0.203	8 in.	8010
CA-561-0A	Black Banana Jumper	Jumper	Banana	Banana	0.203	8 in.	8010
CA-561-2A	Red Banana Jumper	Jumper	Banana	Banana	0.203	8 in.	8010
CA-562-0B	Black Safety Banana Plug Jumper Cable	Jumper	Banana	Banana	0.254	10 in.	8010
CA-562-2B	Red Safety Banana Plug Jumper Cable	Jumper	Banana	Banana	0.254	10 in.	8010
CA-563C	BNC to Banana Jumper	Jumper	Bnc	Banana	0.241	9.5 in.	8010
CA-567-0A	Black Banana Jumper	Jumper	Banana	Banana	0.203	8 in.	8010
CA-567-2A	Red Banana Jumper	Jumper	Banana	Banana	0.203	8 in.	8010
CA-568-XA	Protective Earth Ground	Safety	Eye lug	Eye lug	0.3, 0.45, 3	1, 1.5, 10	8010

1.888.KEITHLEY (U.S. only)

[www.keithley.com](http://www.keithley.com)

**KEITHLEY**

A Greater Measure of Confidence

A Tektronix Company

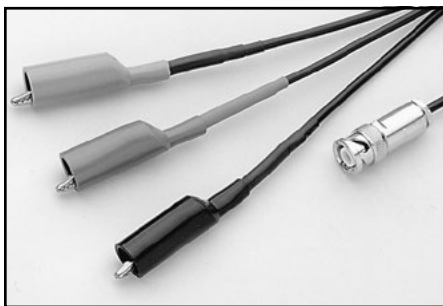
# Cables

Model	Description	Type	TERMINATIONS		LENGTH		USE WITH:
			From	To	m	ft	
HV-CA-554-x	3kV Rated	High voltage	Triax	Triax	0.5, 1, 2, 3	1.6, 3.2, 6.6, 10	8010, 2657A
HV-CA-571-3	High Voltage	Triax	Triax	Unterminated			2657A
S46-SMA-0.5	SMA Cable	Coax	SMA Male	SMA Male	0.15	0.5	7711, 7712, System 46, System 46T
S46-SMA-1	SMA Cable	Coax	SMA Male	SMA Male	0.30	1.0	7711, 7712, System 46, System 46T
SC-9	Low Noise	Coax	Unterminated	Unterminated	Sold by the foot		
SC-22	Low Noise	Triax	Unterminated	Unterminated	Sold by the foot		CS-631
SC-93	Low Thermal	Shielded	Unterminated	Unterminated	Sold by the foot		2182-KIT
SC-182	Low Inductance	Coax	Unterminated	Unterminated	Sold by the foot		2302, 2303, 2303-PJ, 2304A, 2306, 2306-PJ
SC-200A	General Purpose	Shielded twisted pair	Unterminated	Unterminated	Sold by the inch		Series 2600B
SC-206	High Current Coax Cable	Coax	Unterminated	Unterminated	Sold by the inch		2651A
SHV-CA-553-x	3kV Rated	High voltage	Triax	SHV	1, 2, 3	3.2, 6.6, 10	2657A



**Model 236-ILC-3 Safety Interlock Cable:** Designed to connect the lid interlock circuit of the Models 8007 and 8008 test fixtures to the interlock circuit of the Model 237 SMU and 486 and 487 Picoammeters.

**For use with: 4200-SCS, 8007, 8008**



**Model 237-ALG-\***: Low noise triax cable (SC-22) terminated with a 3-slot male triax connector on one end and 3 alligator clips on the other.  
**237-ALG-2** 2m (6.6 ft) length  
**237-ALG-15** 15m (50 ft) length

**For use with: Series 2200, Series 2600B, 4200-PA, 6220, 6221, 6487, 6514, 6482, 6517A, 6517B**



**Model 248-MHV:** 3m (10 ft) of RG-8A/U coax cable terminated with a SHV female connector on one end and a MHV male connector on the other. Maximum operating voltage (rms) is 5,000V.

**For use with: 248**



**Model 248-SHV:** 3m (10 ft) of RG-8A/U coax cable terminated with a SHV female connector on both ends. Maximum operating voltage (rms) is 5,000V.

**For use with: 248 and CS-970**



**Model 2000-MTC-2 Cable Assembly:** 2-meter cable with a 44-pin connector on one end that is designed to mate with the 2000-20 scanner card. The other end is unterminated for direct connection to measurement fixtures or devices.

**For use with: 2000-20**



**Model 2000-MTCD-2 Cable Assembly:** 2-meter cable with a 44-pin connector on one end that is designed to mate with the 2000-SCAN-20 scanner card. The other end is equipped with a 50-pin D-sub male connector.

**For use with: 2000-SCAN-20**

1.888.KEITHLEY (U.S. only)

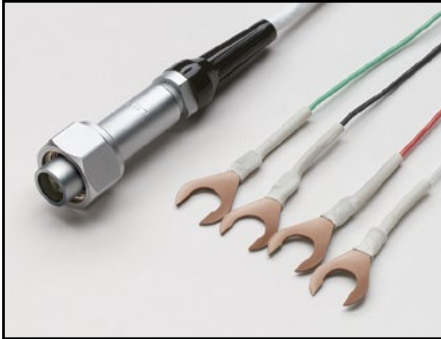
[www.keithley.com](http://www.keithley.com)

**KEITHLEY**

A Greater Measure of Confidence

A Tektronix Company

# Cables



**Model 2107-\* Low-Thermal Input Cables with Spade Lugs:** An input cable terminated with a LEMO connector on one end and four copper spade lugs on the other.  
 2107-4 1.2m (4 ft) length  
 2107-30 9.1m (30 ft) length  
 2107-50 15m (50 ft) length

**For use with: 2182A, Series 2200**



**Model 2600-ALG-2:** 2m (6.6 ft) cable terminated with a 3-slot male triax connector on one end and 3 alligator clips on the other.

**For use with: 2635B, 2636B, 4200-PA**



**Model 2651A-KIT-\*:** High current, low impedance, coaxial cable assembly.

**2651A-KIT-1:** 1m (3.3 ft).

**2651A-KIT-2:** 2m (6.6 ft).

**2651A-KIT-3:** 3m (10 ft).

**For use with: 2651A, 8011**



**Model 3720-MTC-\*:** 78-pin D-sub female to 78-pin D-sub male cable.

**3720-MTC-1.5:** 1.5m (5 ft) length

**3720-MTC-3:** 3m (10 ft) length

**For use with: 3720, 3723, 3724**



**Model 3721-MTC-\*:** 50-pin D-sub female to 50-pin D-sub male cable.

**3721-MTC-1.5:** 1.5m (5 ft) length

**3721-MTC-3:** 3m (10 ft) length

**For use with: 3721, 3730, 3731, 3740, 3750**



**Model 3722-MTC-\*:** 104-pin D-sub male to 104-pin D-sub female cable.

**3722-MTC-1.5:** 1.5m (5 ft) length

**3722-MTC-3:** 3m (10 ft) length

**For use with: 3722**



**Model 3722-MTC-\*/MM:** 104-pin D-sub male to 104-pin D-sub male cable.

**3722-MTC-1.5/MM:** 1.5m (5 ft) length

**3722-MTC-3/MM:** 3m (10 ft) length

**For use with: 3722**



**Model 3732-MTC-\*:** 78-pin D-sub female to 78-pin D-sub male cable.

**3732-MTC-1.5:** 1.5m (5 ft) length

**3732-MTC-3:** 3m (10 ft) length

**For use with: 3732**

1.888.KEITHLEY (U.S. only)

[www.keithley.com](http://www.keithley.com)

A Greater Measure of Confidence

**KEITHLEY**

A Tektronix Company

# Cables



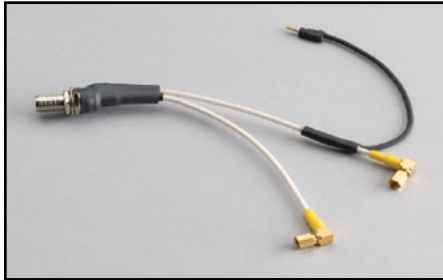
**Model 4200-MTRX-\***: Ultra low noise SMU triax cable is terminated with a miniature male triax connector on one end and a standard 3-slot male triax connector on the other end. This cable connects a Model 4200-SMU or 4210-SMU source measurement unit installed in a Model 4200-SCS to a test fixture. (4200-MTRX-\* cables are intended only for connection to an SMU that does not have a 4200-PA PreAmp installed.)

**4200-MTRX-1**: 1m (3.2 ft)

**4200-MTRX-2**: 2m (6.5 ft) (two included with each 4200-SCS SMU not configured with a 4200-PA Remote PreAmp)

**4200-MTRX-3**: 3m (9.8 ft)

**For use with: 4200-SCS**



**Model 4200-PRB-C**: SMA to SSMC Y adapter cable with local ground that connects the 4200-PIV package to DC probe manipulators. The cable is terminated at one end with a single female SMA. The other end splits into two gold SSMC plugs (female connectors) and a black wire with integrated connector, which is used to connect to the shield of another Model 4200-PRB-C cable.

**For use with: 4200-PIV, 4210-CVU**



**Model 4200-RPC-\***: Remote PreAmp cable terminated at each end with a high density DB15 connector. This cable connects a Model 4200-SMU or 4210-SMU source measurement unit installed in a Model 4200-SCS to a remotely mounted Model 4200-PA PreAmp.

**4200-RPC-0.3**: 0.3m (1 ft) (for use inside prober shield)

**4200-RPC-2**: 2m (6.5 ft) (one included with each 4200-PA)

**4200-RPC-3**: 3m (9.8 ft)

**4200-RPC-6**: 6m (19.6 ft)

**For use with: 4200-PA**



**Model 4200-TRX-\***: Ultra low noise PreAmp triax cable terminated with a standard 3-slot male triax connector on each end. This cable connects a Model 4200-PA PreAmp option installed in the Model 4200-SCS to the test fixture.

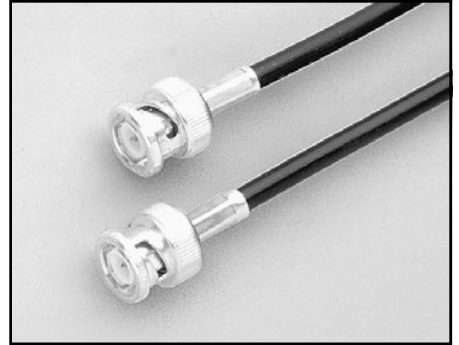
**4200-TRX-0.3**: 0.3m (1 ft) (recommended for remote location of the 4200-PA)

**4200-TRX-1**: 1m (3.2 ft)

**4200-TRX-2**: 2m (6.5 ft) (two included with each Model 4200-PA)

**4200-TRX-3**: 3m (9.8 ft)

**For use with: 4200-PA**



**Model 4801 Input Cable**: Low noise coax cable, 1.2m (48 in) in length, with male BNC connectors on each end.

**For use with: 6482, 6485, 7158**



**Model 4802-10**: 3m (10 ft) of low noise coax cable with male BNC connector at one end and unterminated at the other.

**For use with: 6482, 6485, 7158**



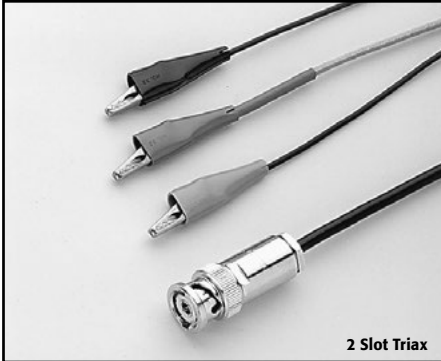
**Model 4803 Low Noise Cable Kit**: Includes 15m (50 ft) of low noise coax cable, 10 male BNC connectors, and 5 female BNC chassis-mount connectors.

**For use with: 6482, 6485, 7158**

1.888.KEITHLEY (U.S. only)

[www.keithley.com](http://www.keithley.com)

# Cables



2 Slot Triax

**Model 6011 2-slot Triax Cable:** 1.5m (5 ft) of triax cable (SC-22) terminated with a 2-slot triax plug on one end and three alligator clips on the other. Also available in 3m (10 ft) length (**Model 6011-10**).

**For use with instruments with 2-slot triax connectors**



**Model 6517-ILC-3 Interlock Cable:** Designed to connect the Interlock of the 6517A with the 8009 test fixture. Configuring the 6517A with the 8009 test fixture results in all the electrode constants already being programmed into the unit.

**For use with: 6517A Electrometer, 8009**



**Model 6517B-ILC-3 Interlock Cable:** Designed to connect the interlock of the 6517B with the 8009 test fixture. Configuring the 6517B with the 8009 test fixture results in all the electrode constants already being programmed into the unit.

**For use with: 6517B Electrometer, 8009**



**Model 7009-5 Shielded RS-232 Cable:** 1.5m (5 ft) RS-232 cable with a male DB-9 connector at one end and a female DB-9 connector on the other end. Wired as a straight through, not as a null modem cable.

**For use with: All RS-232 capable instruments**



**Model 7011-MTC-x:** Mass terminated cable assembly for connection to 7011-C and other switching cards. The cable has 45 pairs with outer shield. The cable is terminated at each end with 96-pin female DIN connectors with strain relief.

**7011-MTC-1** 1m (3.3 ft)

**7011-MTC-2** 2m (6.6 ft)

**For use with: 7011-C, 7012-C, 7013-C, 7015-C, 7018-C, 7022**



**Model 7019C-MTCI-2 6-wire Kelvin Extender and Instrument Cable:** Used with Model 7019-C 6-Wire Ohms Matrix Card and a SourceMeter SMU instrument. The SourceMeter cables are 0.6m (2 ft) long and the DUT cables are 2m (6.6 ft) long. The cable set is used in a basic system to test a resistor network.

**For use with: Series 2400 SourceMeter SMU Instruments**



**Model 7020-MTC-2:** 2m (6.6 ft) mass terminated cable assembly for connection to 7020. The cable has 45 pairs with outer shield. The cable is terminated at each end with 96-pin female DIN connectors with strain relief.

**For use with: 7020**

1.888.KEITHLEY (U.S. only)

[www.keithley.com](http://www.keithley.com)

A Greater Measure of Confidence

**KEITHLEY**

A Tektronix Company

# Cables



2 Slot Triax

**Model 7024-\* 2-slot Triax Cable:** Low noise triax cable (SC-22) with 2-slot male triax connectors on each end.

- 7024-3 0.9m (3 ft)
- 7024-10 3m (10 ft)

**For use with instruments with 2-slot triax connectors**



2 Slot Triax

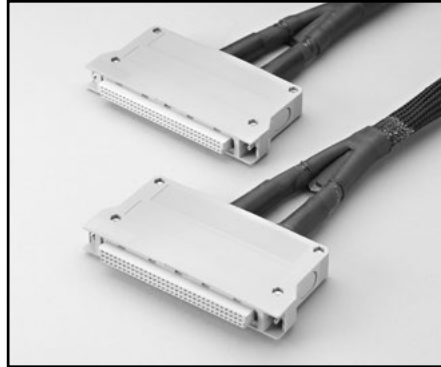
**Model 7025-10 2-slot Triax Cable:** 3m (10 ft) low noise triax input cable (SC-22) terminated on one end with 2-slot male triax connector.

**For use with instruments with 2-slot triax connectors**



**Model 7035-MTC-2:** 2m (6.6 ft) mass terminated cable assembly for connection to 7035. The cable has 45 pairs with outer shield. The cable is terminated at each end with 96-pin female DIN connectors with strain relief.

**For use with: 7035**



**Model 7036-MTC-2:** 2m (6.6 ft) mass terminated cable assembly for connection to 7036. The cable has 45 pairs with outer shield. The cable is terminated at each end with 96-pin female DIN connectors with strain relief.

**For use with: 7036**



**Model 7051-\*:** General purpose BNC to BNC cable (G-58C).

- 7051-2 0.6m (2 ft)
- 7051-5 1.5m (5 ft)
- 7051-10 3m (10 ft)

**For use with: 2015, 2016, 3390, 7711, some instrument external trigger I/O lines**



**Model 7078-DIN:** This 1.8m (6 ft) cable accessory connects between Model 707A mainframes when operated as one unit in Master/Slave mode. One cable is required for each mainframe.

**For use with: 707A**



**Model 7078-MTC-5:** 1.5m (5 ft) mass terminated cable for connection to column inputs (7071 and 7071-4). Also used for matrix expansion (7071, 7071-4, or 7074). The cable has 12 sets of shielded twisted pair wires for isolation of critical circuits and noise rejection in the system. The cable is terminated at each end in a 38-pin connector block with strain relief. **Model 7078-MTC-20** can be used as is or cut in half to make two 10 ft cables.

**For use with: 7071, 7071-4, 7074-D**



3 Slot Triax

**Model 7078-TRX-\* 3-slot Triax Cables:** Low noise triax cables terminated at both ends in 3-slot male triax connectors.

- 7078-TRX-1 0.3m (1 ft)
- 7078-TRX-3 0.9m (3 ft)
- 7078-TRX-5 1.5m (5 ft)
- 7078-TRX-10 3.0m (10 ft)
- 7078-TRX-12 3.5m (12 ft)
- 7078-TRX-20 6.0m (20 ft)

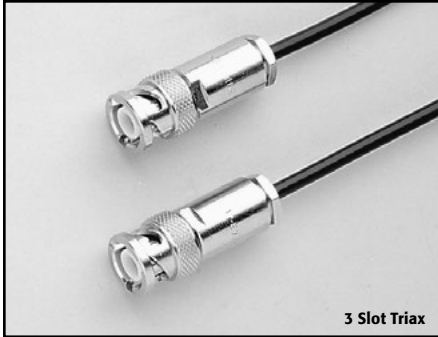
**For use with: 2635B, 2636B, 6220, 6221, 6482, 6487, 6514, 6517A, 6517B, 7072, 7174A**

1.888.KEITHLEY (U.S. only)

[www.keithley.com](http://www.keithley.com)

**KEITHLEY**

# Cables



3 Slot Triax

**Model 7078-TRX-6IN 3-slot Triax Cable:** 0.15m (6 inch), 3-slot, low-noise, guarded triax cable that minimizes leakage current and input capacitance when used with the Model 6430 Remote PreAmp (lower noise than 1 foot or longer versions).

**For use with: 6430**



**Model 7152-MTC-\***: Five low noise triax cables terminated in 6-position M-series coax connector blocks. Provides quick connection between 7152 matrix cards and is compatible with Model 7152-MTR connector. Also available in 3m (10 ft) length for connection between the matrix and the device under test.

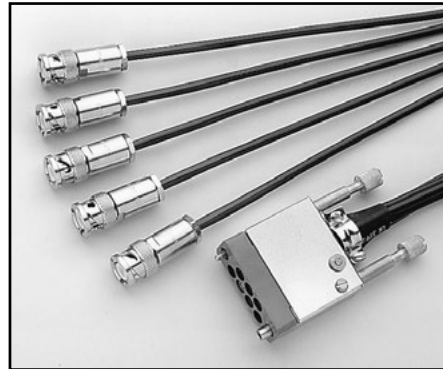
7152-MTC-2 0.6m (2 ft)  
7152-MTC-10 3.0m (10 ft)

**For use with: 7152**



**Model 7152-TRX-10:** Set of five 3m (10 ft) low noise triax cables terminated at one end in a single M-series connector block and at the other end in 3-slot triax connectors. This cable is most useful for direct connection to electrometers and Source/Measure Units.

**For use with: 7152, 8006**



**Model 7153-TRX:** 2m (6.6 ft) low noise cable assembly with M-series connector at one end for row or column connections to the 7153, and five 3-slot male triax connectors at the other end. Two 7153-TRX cable assemblies are required to make all connections to the 7153 card.

**For use with: 7153**



**Model 7173-50-CSEP:** The 7173-50-CSEP cable set provides the capability to expand a switching configuration to include more than one 7173-50. Each set contains four 0.6m (25 in) cables. One cable is required to expand each row or column connection between adjacent cards. For example, using two 7173-50 cards to create a 4x24 matrix would require connecting the rows of two adjacent cards together. One 7173-50-CSEP set has enough cables to do this. Connecting the 12 columns together on two adjacent cards creates an 8x12 matrix. This would require three 7173-50-CSEP sets, 12 cables.

**For use with: 7173-50**



**Model 7705-MTC-2:** 2m (6.6 ft) 50-conductor male to female D-sub cable assembly.

**For use with: 7703, 7705, 7707, 7709, 7701**

1.888.KEITHLEY (U.S. only)

[www.keithley.com](http://www.keithley.com)

A Greater Measure of Confidence

**KEITHLEY**

A Tektronix Company



# Cables

Cables



**Model 7707-MTC-2:** 2m (6.6 ft) 25-conductor male to female D-sub cable assembly.

**For use with:** 7701, 7707, 7709



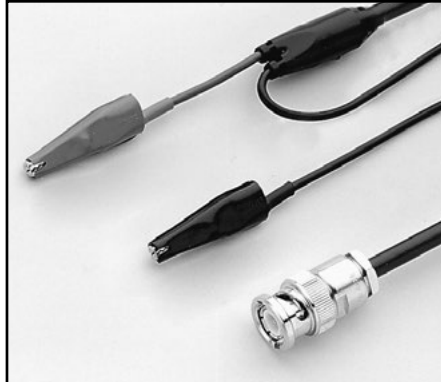
**Model 7711-BNC-SMA:** Male SMA to female BNC cables (5 each), 0.15m (0.5 ft) in length.

**For use with:** 7711



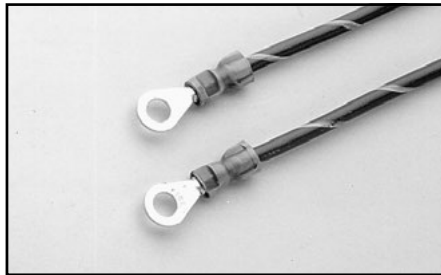
**Model 7712-SMA-1:** SMA cable, male to male, 1m (3.3 ft).

**For use with:** 7711, 7712, System 46, System 46T



**Model 7754-3 BNC to Alligator Cable:** 0.9m (3 ft) terminated on one end with a BNC plug and on the other with two alligator clips.

**For use with instruments with 2-slot BNC connections**



**Model 8007-GND-3:** Safety ground wire, 3m (10 ft).

**For use with instruments with a safety ground connector**



**Model 8542-301:** 1.8m (6 ft) LIV test system cable.

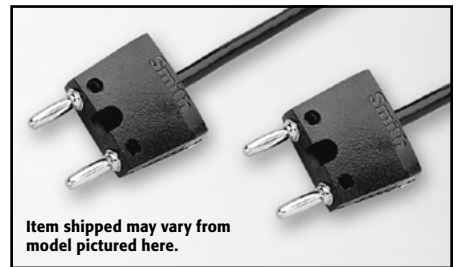
**For use with:** Series 2400, 2500, System 25, 8544, 8544-TEC



Item shipped may vary from model pictured here.

**Model 8607 1kV Source Banana Cable Set:** The 8607 cable set is made up of one red and one black high voltage test lead with fixed safety banana plug ends. The leads are 1 meter (3.3 ft) long and have a voltage rating of 1500V DC.

**For use with:** 2410, 6487, 6517A, 6517B



Item shipped may vary from model pictured here.

**CA-18-1:** 1.2m (4 ft) shielded cable terminated with a dual banana plug on each end. For use with binding post inputs or dual banana jacks.

**For use with:** Binding post inputs



**Model CA-19-2:** 1.5m (5 ft) RG58 cable terminated with a BNC male plug on each end.

**For use with:** 4200-SCS

ACCESSORIES

1.888.KEITHLEY (U.S. only)

[www.keithley.com](http://www.keithley.com)

A Greater Measure of Confidence

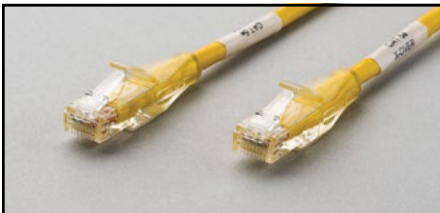
**KEITHLEY**  
A Tektronix Company

# Cables



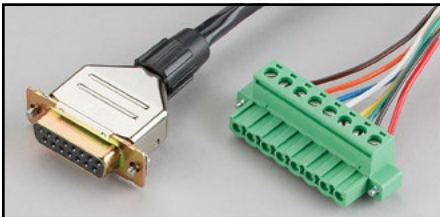
**CA-126-1A Digital I/O Cable:** 1.5m (5 ft) of cable, from DB25 male to DB25 female.

**For use with:** Series 2600B, Series 3700A



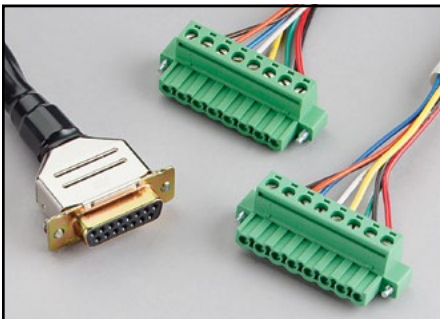
**CA-180-3A:** 3m (10 ft), CAT5 crossover cable for Ethernet or TSP-Link.

**For use with:** Series 2600B, 2701, 3390, Series 3700A, 6221, all TSP-Link enabled instruments



**CA-321-1:** Temperature control cable.

**For use with:** 2510, 8544



**CA-322-1:** Dual temperature control cable.

**For use with:** 2510, 8544, 8544-TEC



**CA-404B:** 2m (6.5 ft) RG188 coax cable terminated with an SMA male plug on each end, 50Ω impedance.

**For use with:** 4200-SCS, System 46, System 46T



**CA-405B:** 15cm (6 in) RG188 coax cable terminated with an SMA male plug on each end, 50Ω impedance.

**For use with:** 4200-SCS



**CA-406B:** 33cm (13 in) RG188 coax cable terminated with an SMA male plug on each end, 50Ω impedance.

**For use with:** 4200-SCS



**CA-446A:** 3m (9.8 ft) coax cable terminated with an SMA male plug on each end, 100Ω impedance.

**For use with:** 4210-CVU



**CA-447A:** 1.5m (4.9 ft) coax cable terminated with an SMA male plug on each end, 100Ω impedance.

**For use with:** 4210-CVU



**CA-451A:** 10.8cm (4.25 in) RG188 coax cable terminated with an SMA male plug on each, 50Ω impedance.

**For use with:** 4200-SCS

1.888.KEITHLEY (U.S. only)

[www.keithley.com](http://www.keithley.com)

A Greater Measure of Confidence

**KEITHLEY**

A Tektronix Company

# Cables



**CA-452A:** 20.4cm (8 in) RG188 coax cable terminated with an SMA male plug on each end, 50Ω impedance.

**For use with:** 4200-SCS



**CA-559-0A and CA-559-2A:** Banana to banana jumper (102mm).

**For use with:** 2600-PCT-x, 4200-PCT-x, 8010



**CA-568-xA:** Protective earth safety ground cable with eye lugs (x = 12, 18, or 120 inches).

**For use with:** 2657A, 2657-LIM-3, 2657-PIM-200, 8010



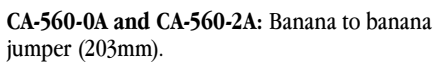
**CA-557-\*:** 8-pin male to 8-pin male cable assembly with straight through pin configuration.

**CA-557-1:** 1m (3.3 ft)

**CA-557-2:** 2m (6.6 ft)

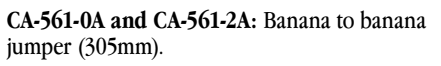
**CA-557-3:** 3m (10 ft)

**For use with:** 2601B, 2602B, 2611B, 2612B, 2651A SourceMeter® SMU Instruments, 2600-PCT-x, 4200-PCT-x, 8010



**CA-560-0A and CA-560-2A:** Banana to banana jumper (203mm).

**For use with:** 2600-PCT-x, 4200-PCT-x, 8010



**CA-561-0A and CA-561-2A:** Banana to banana jumper (305mm).

**For use with:** 2600-PCT-x, 4200-PCT-x, 8010



**HV-CA-554-x:** High voltage triax to triax cable (3kV rated) (x = 0.5, 1, 2, or 3m).

**For use with:** 2657A, 2657-LIM-3, 2657-PIM-200, 8010



**CA-562-0B and CA-562-2B:** Safety banana to banana jumper (254mm).

**For use with:** 2600-PCT-x, 4200-PCT-x, 8010



**CA-558-2:** 25-pin D-sub to 3-pin interlock cable assembly.

**For use with:** Series 2600B, 2600-PCT-x, 2651A, 2657A, 4200-SCS, 4200-PCT-x, 8010



**CA-563C:** BNC to banana jumper (240mm).

**For use with:** 2600-PCT-x, 4200-PCT-x, 8010



**HV-CA-571-3:** High voltage triax to unterminated cable.

**For use with:** 2657A, 2600-PCT-x, 4200-PCT-x

1.888.KEITHLEY (U.S. only)

[www.keithley.com](http://www.keithley.com)

# Cables



**SHV-CA-533-x:** High voltage triax to SHV cable (x = 1, 2, or 3m) (3kV rated).

**For use with:** 2657A



**S46-SMA-0.5:** SMA cable, male to male, 0.15m (0.5 ft).

**For use with:** 7711, 7712, System 46, System 46T

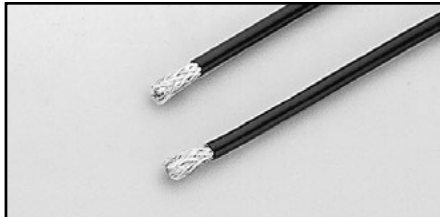


**S46-SMA-1:** SMA cable, male to male, 0.3m (1 ft).

**For use with:** 7711, 7712, System 46, System 46T



**SC-9:** Low noise coax cable without connectors (sold by the foot).



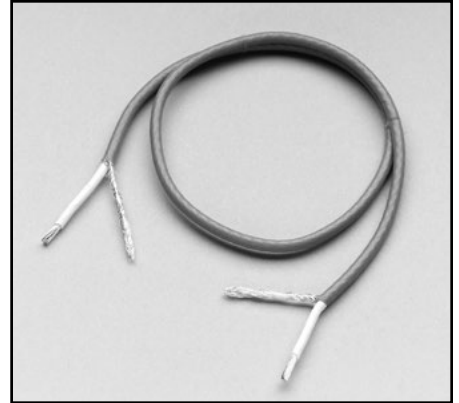
**SC-22:** Low noise triax cable without connectors (sold by the foot).

**For use with:** CS-631



**SC-93:** Low thermal, 2-conductor shielded cable, #22AWG solid copper (sold by the foot).

**For use with:** 2182-KIT



**SC-182:** Low inductance (42nH/ft) coaxial cable for minimizing test lead impedance in circuits using fast transient response power supplies. The cable is sold by the foot and comes without connectors.

**For use with:** 2302, 2303, 2303-PJ, 2304A, 2306, 2306-PJ, 2306-VS



**SC-200A:** Shielded twisted pair cable (sold by the inch). Recommended for general-purpose use with Series 2600B System SourceMeter SMU instruments.

**For use with:** Series 2600B

1.888.KEITHLEY (U.S. only)

[www.keithley.com](http://www.keithley.com)

A Greater Measure of Confidence

**KEITHLEY**

A Tektronix Company

## X-ON Electronics

Largest Supplier of Electrical and Electronic Components

*Click to view similar products for [Test Clips](#) category:*

*Click to view products by [Tektronix](#) manufacturer:*

Other Similar products are found below :

[010000](#) [923743-16](#) [923850-C](#) [BU-656-0](#) [923738-28](#) [4140A](#) [4324A](#) [TL820](#) [TL822](#) [5116](#) [5450](#) [5216](#) [5252](#) [5454](#) [5694](#) [923700](#) [923698](#)  
[CR0060](#) [3038](#) [927739-20](#) [923743-14](#) [923743-40](#) [932146101](#) [930318100](#) [930126101](#) [Z-SB3FA3250AAAB04001](#) [Z-S11F0107G1000](#) [Z-](#)  
[S11F0207B1520](#) [Z-S11F0207B2030](#) [Z-S11F0207B15000](#) [Z-SB3FA3226AAAB11001](#) [Z-S11F0207B1010](#) [Z-S11F0207B3000](#) [923706](#)  
[930317800](#) [930317801](#) [973889100](#) [972405100](#) [972405101](#) [923714](#) [R999720600](#) [949-1](#) [458-3](#) [SK 201200278 020](#) [BU-65-B](#) [BU-21CPN-](#)  
[GZZZ](#) [PK-HVA-02](#) [BU-25C-DZZZ](#) [BU-142-2](#) [SAK 6675 NI / GNGE](#)