

Rack Mount Kits

SELECTOR GUIDE: RACK MOUNT KITS

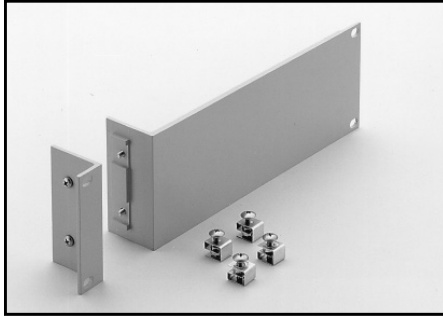
Instrument	Fixed Single	Fixed Dual	Shelf	Rear or Rail Support			
Series 2000 2182A Series 2300	Series 2500 2700 2701	6220 6221 6485	6487 6514 6517B	4288-1	4288-2	4288-9 ³ 4299-7	
Series 2100, Series 2400, 3390, 6430				4299-3	4299-4	4299-7	
Series 2260B						2260B-RMK-EIA 2260B-RMK-JIS	
Series 2268				2268-RMK-1	2268-RMK-1		
2290-5				2290-5-RMK-1	2290-5-RMK-2		
2290-10				2290-10-RMK-1	2290-10-RMK-2	4299-7	
2450, 2460, 2461, DMM7510				4299-8	4299-9 4299-10 ¹ 4299-11 ²		
Series 2600B				4299-1	4299-2		
2651A, 2657A, 708B				4299-6			
2750, System 46, System 46T							4288-7
707B				Included on 707B chassis			
Series 3700A							4288-10
4200-SCS/C or 4200-SCS/F							4200-RM
7002				7002-RMK-1			

1. Model 4299-10 mounts one Model 2450 and one Series 26XXB.
2. Model 4299-11 mounts one Model 2450 and one Series 2000, 2400, and all other 2U half-rack instruments except the Series 2200 and Series 2290 instruments.
3. Model 4288-9 is the recommended shelf for these models based on color.

Rack Mount Kits

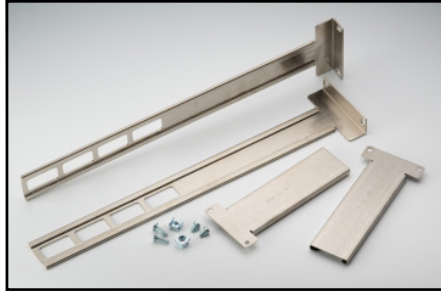
Fixed Single Unit Rack Kit

(For mounting of one half-rack-width instrument or one full-rack-width instrument)



4288-1: For half-rack-width models.
2U (3.5 in.) high.

For use with: Series 2000, 2182A, Series 2300,
2700, 2701, 6220, 6221, 6485, 6487, 6514,
6517B, 7001.

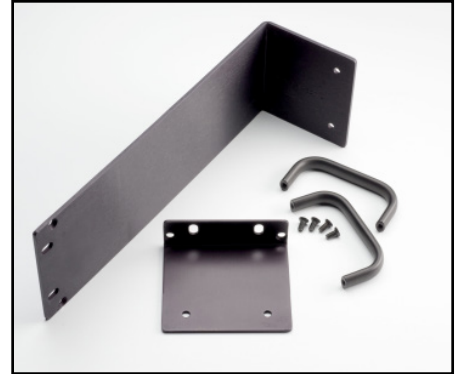


4299-6: For full-rack-width models.
2U (3.5 in.) high.

For use with: 2651A, 2657A, 708A

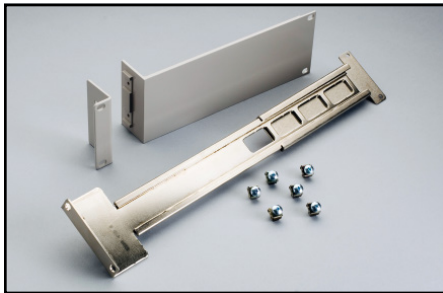
4299-8: For half-rack-width models.
2U (3.5 in.) high.

For use with: 2450, 2460, 2461, DMM7510
(graphical display models only)



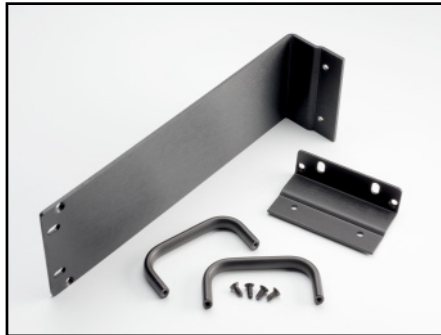
2290-10-RMK-1: For half-rack-width
models. 2U (3.5 in.) high.

For use with: 2290-10



4299-1: For half-rack-width models.
2U (3.5 in.) high.

For use with: Series 2600B



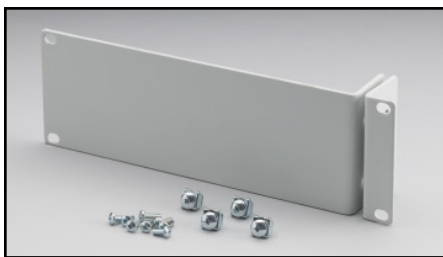
2268-RMK-1: For half-rack-width
models. 1U (1.75 in.) high.

For use with: Series 2268



7002-RMK-1: 4U (7.0 in.) high.
Full-rack model.

For use with: 7002



4299-3: For half-rack-width models.
2U (3.5 in.) high. Allows for mounting of
a 2U Keysight Instrument as well.

For use with: Series 2100, Series 2400,
3390, 6430

2290-5-RMK-1: For half-rack-width
models. 2U (3.5 in.) high.

For use with: 2290-5

Rack Mount Kits

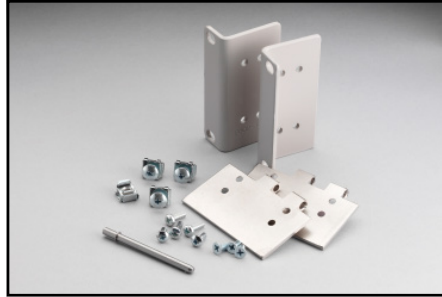
Fixed Dual Unit Rack Kit

(For mounting two or more instruments in the width of a rack)



4288-2: For half-rack-width models. 2U (3.5 in.) high.

For use with: Series 2000, 2182A, Series 2300, 2700, 2701, 6220, 6221, 6485, 6487, 6514, 6517B, 7001



4299-4: For half-rack-width models. 2U (3.5 in.) high. Allows mounting a 2U Keithley instrument with a Keysight instrument.

For use with: Series 2100, Series 2400, 3390, 6430

4299-9: For half-rack-width models. 2U (3.5 in.) high.

For use with: 2450, 2460, 2461, DMM7510 (graphical display models only)

4299-10: For half-rack-width models. 2U (3.5 in.) high.

For use with: 2450, 2460, 2461, DMM7510 (graphical display models only), Series 2260B

4299-11: For half-rack-width models. 2U (3.5 in.) high.

For use with: 2450, 2460, 2461, DMM7510 (graphical display models only), Series 2000, Series 2400 or a 2U Keysight instrument

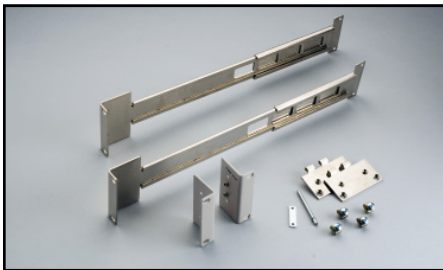
2268-RMK-2: For half-rack-width models. 1U (1.75 in.) high.

For use with: Series 2268



2290-5-RMK-2: For half-rack-width models. 2U (3.5 in.) high.

For use with: 2290-5



4299-2: For half-rack-width models. 2U (3.5 in.) high.

For use with: Series 2600B



2290-10-RMK-2: For half-rack-width models. 2U (3.5 in.) high.

For use with: 2290-10

Rack Mount Kits

Shelf Rack Kit

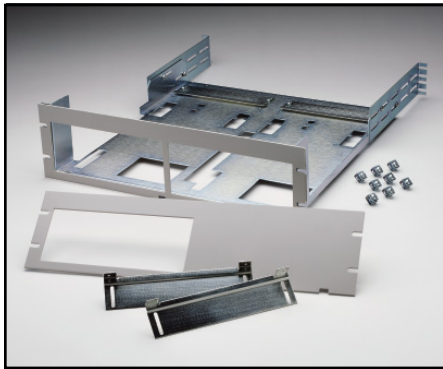
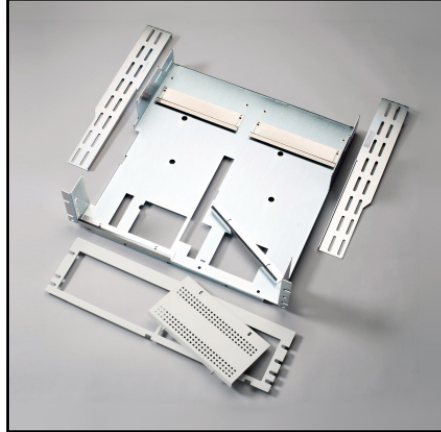
(For mounting of one or two instruments in a rack)

2260B-RMK-EIA: Supports the EIA rack standard. Allows for full-rack-width assembly configuration of sixth-, third-, and half-rack-width models. 3U (5.25 in.) high.

For use with: **Series 2260B**

2260B-RMK-JIS: Supports the JIS rack standard. Allows for full-rack-width assembly configuration of sixth-, third-, and half-rack-width models. 3U (5.25 in.) high.

For use with: **Series 2260B**



4288-9: Mounts 2U-high instruments in 3U-high rack space. 3U (5.25 in.) high.

For use with: **Series 2000, 2182A, Series 2300, 2700, 2701, 6220, 6221, 6485, 6487, 6514, 6517B, 7001**

4299-7 Universal Shelf Rack Kit:

Mounts 2U-high instruments in 3U-high rack space. 3U (5.25 in.) high.

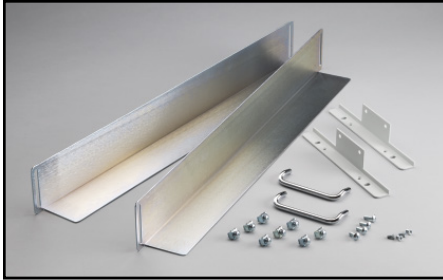
For use with: **Series 2000, Series 2100, 2182A, Series 2200, Series 2300, Series 2400 (Except graphical) 2700, 2701, 6220, 6221, 6430, 6485, 6487, 6514, 6517B, 7001**

RMU 2U: 3U (5.25 in.) high.

For use with: **2290-5 and 2290-10**

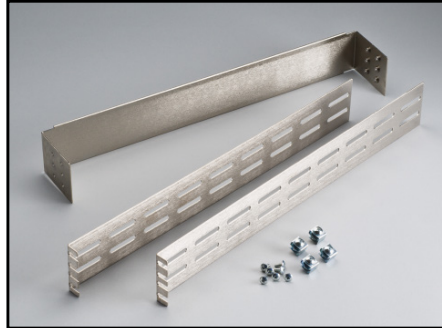
Rack Mount Kits

Rear/Rail Support Kits and Miscellaneous Rack Accessories



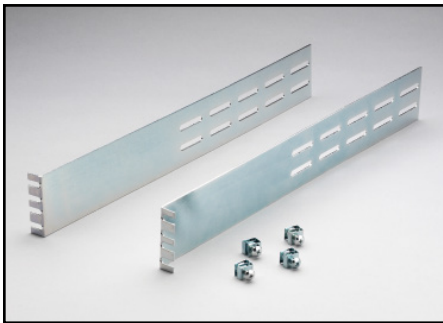
4200-RM

For use with: 4200-SCS



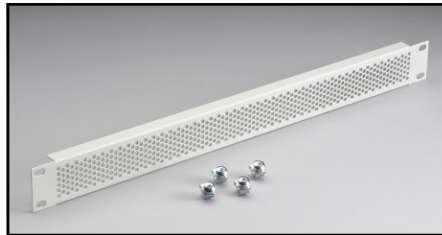
4288-10

For use with: Series 3700A



4288-7

For use with: 2750, System 46, System 46T



4299-5: 1U (1.75") vented panel.

For use with: Series 2600B



376-7589-xx: Cosmetic filler panel

For use with Series 2200

4200-KEY-RM

For use with: 4200-SCS

X-ON Electronics

Largest Supplier of Electrical and Electronic Components

Click to view similar products for [Mounting Fixings](#) category:

Click to view products by [Tektronix](#) manufacturer:

Other Similar products are found below :

[5912235-2](#) [007541](#) [627](#) [M3783-7001](#) [71-074914-006](#) [71-441549-19S](#) [75-69211-3P](#) [75-69214-6P](#) [75-69220-27S](#) [75-69224-5S](#) [7717-8DAP](#)
[85048GBESR](#) [FPK-02-R10](#) [PMS27488-001-01](#) [1-18023-0](#) [H-118-2](#) [D83999/20WC8SN](#) [DB1](#) [1302030464](#) [DC31-14W19PN](#) [DC31-](#)
[14W19PW](#) [DC32-18W32SN](#) [DC36-18-32SW](#) [DC36-18-32SX](#) [DC37-14-19PW](#) [DC37-22-21PX](#) [1302010957](#) [1302263564](#) [1302340393](#)
[1404-0016-78](#) [14540](#) [149331-9811](#) [1561-60](#) [1566](#) [1566](#) [17542](#) [BR16A](#) [HS5659MB98PN](#) [NT20SATT01](#) [201C5058-01-201](#) [REV E](#) [22594-8](#)
[KBB-141](#) [89078GBEPR](#) [89078GBESR](#) [915060](#) [SF4011-60101](#) [97-CS-50](#) [1671](#) [LS10215R14-15PN](#) [LS10215R14-7PN L/C](#)