

# Broadening the Tektronix Signal Source Portfolio

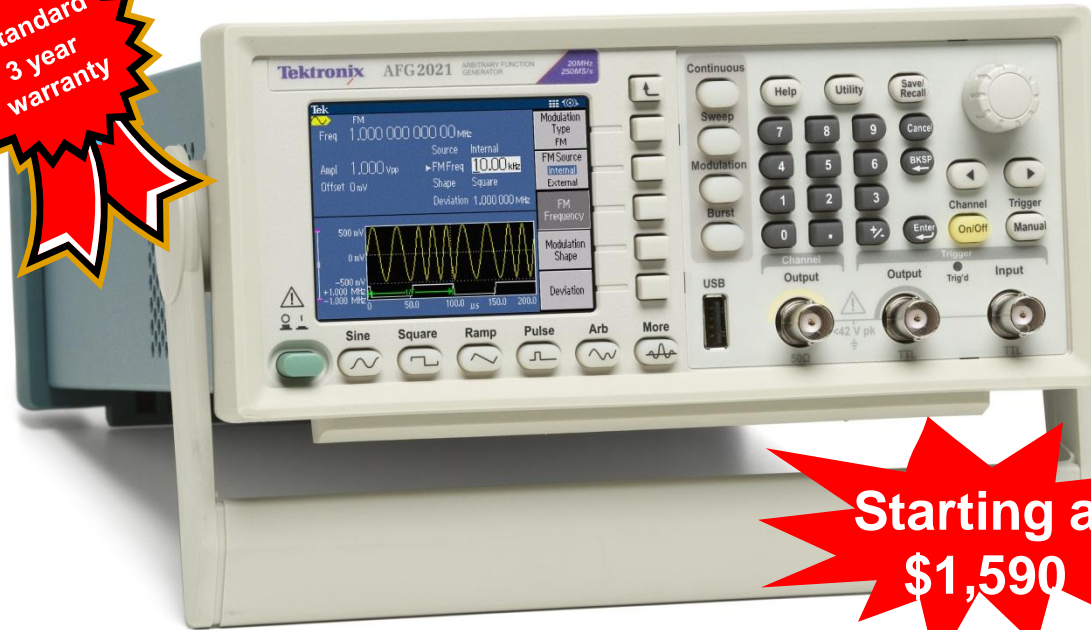
Cost efficient signal generation



**Tektronix**<sup>®</sup>

# Introducing a Full Featured Bench Top Arbitrary Function Generator for the Value Segment

**Standard  
3 year  
warranty**



***Proven AFG  
Technology for price  
sensitive customers!***

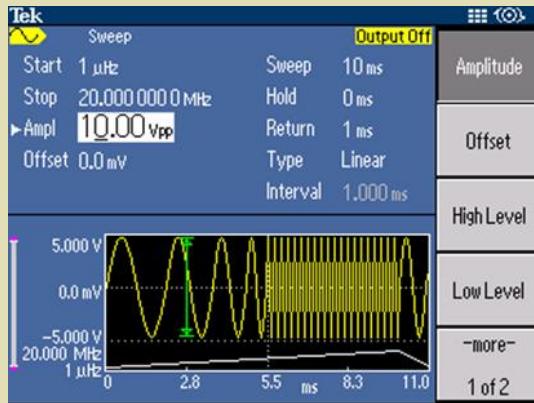
**Starting at  
\$1,590**

Model	Bandwidth	Channel	Sample rate	Resolution	Interface	MSRP in US
AFG2021	20MHz	1	250MS/s	14bit	USB Host & Device	\$1,590
AFG2021 (with GL option)	20MHz	1	250MS/s	14bit	USB Host & Device, GPIB and LAN	\$1,690

# Best-in-class Performance

## AFG2000 Series Overview

### Performance



- Leverages industry leading AFG3000 technology & UI
- 1  $\mu$ Hz~20MHz sine
- 250MS/s sample rate
- 1ppm stability
- 14bit vertical resolution
- 10Vpp into 50ohm load

### Flexibility



- 12 built-in standard waveforms
- 4 distinct run modes
- Built-in noise generator
- Easily share waveform & set-up data with AFG3000 models

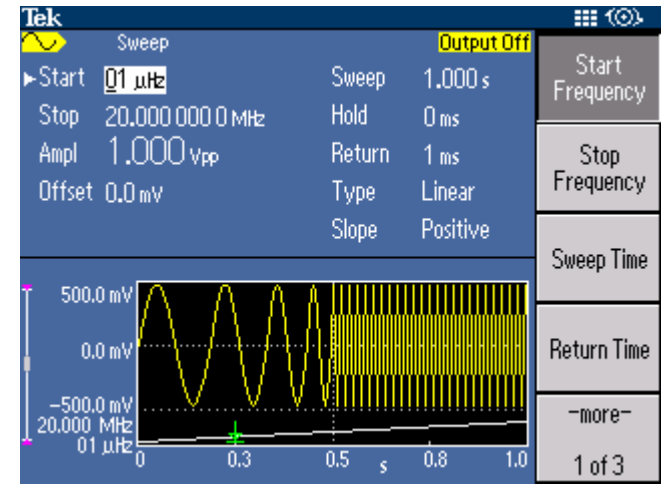
### Versatility



- Compact form factor
- Optional GPIB and LAN
- Free ArbExpress and SignalExpress productivity software

# Superior Features at an Affordable Price

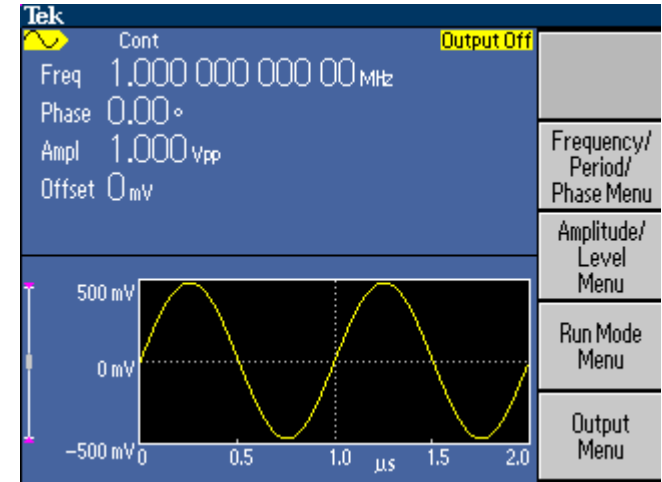
- 20MHz bandwidth
- 14bit vertical resolution
- 250MS/s sample rate
- 12 built-in standard waveforms
- Continues, sweep, modulation and burst modes
- 4 × 128 KS built-in memory and USB memory expansion for user defined waveforms



*Enabling end user to quickly generate simple or complex waveforms to exercise their designs*

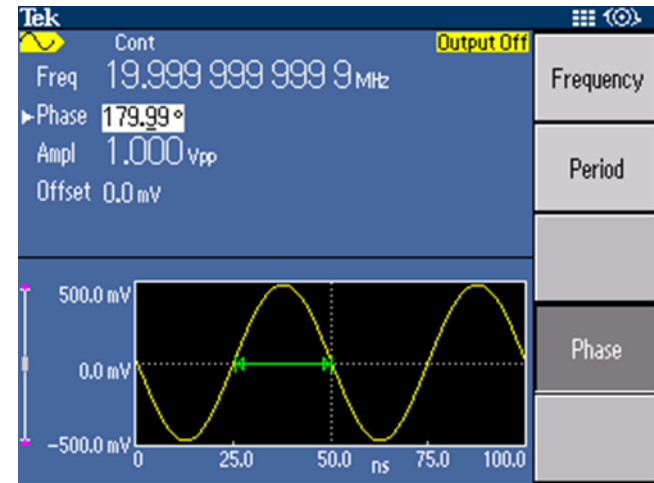
# Leveraging Proven AFG3000 Technology

- The innovative ease-of-use features first seen on AFG3000 are the building blocks for the AFG2021
  - A 3.5 in color TFT LCD shows the relevant settings in both graphic and text formats
  - The shortcut buttons and rotary knob allow easy access to the most frequently used settings and functions
  
- Menu and online help are available in 8 languages
  
- The AFG3000 customers can migrate to AFG2021 quickly without having to learn a new User Interface



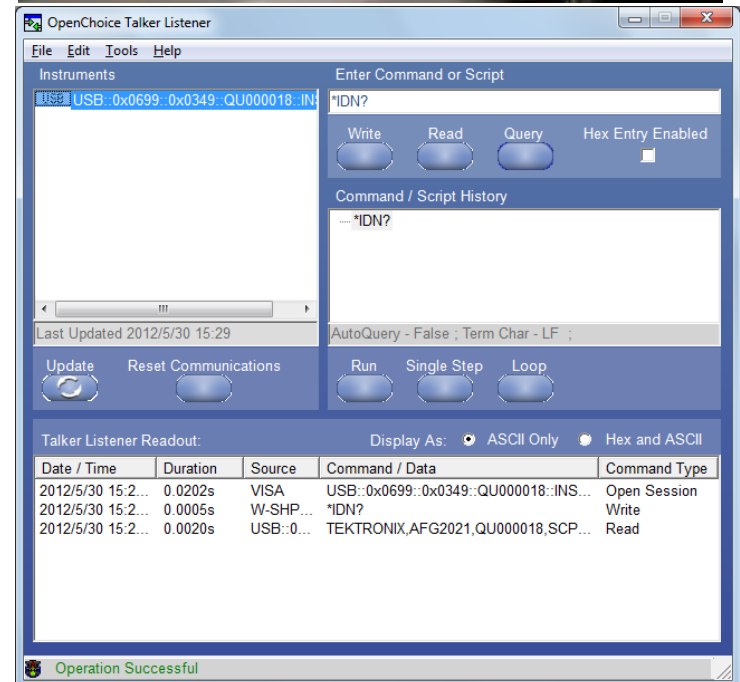
# Efficient Shortcuts to High Frequency

- DDS technology enables accurate, easy and on-the-fly changes to frequency and phase characteristics
  - 1uHz to 20MHz sine wave, 1uHz or 12digits frequency resolution
  - $-180^\circ \sim 180^\circ$  phase range,  $0.01^\circ$  resolution
- High stability time base
  - $\pm 1$ ppm internal frequency reference
  - 1ppm per year aging



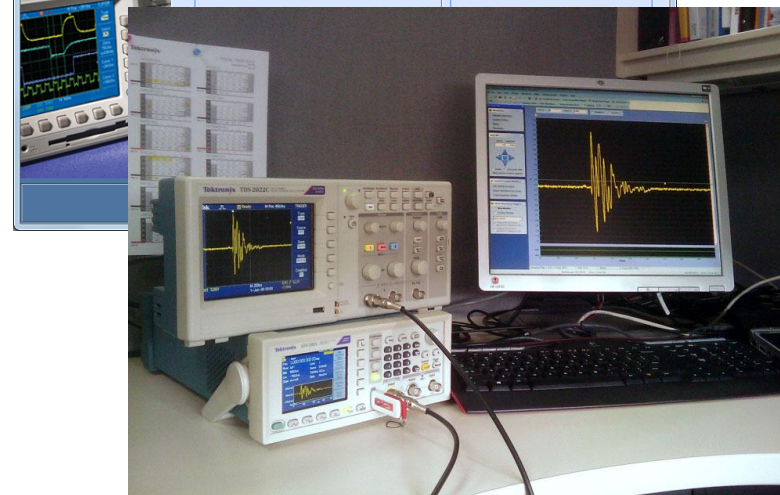
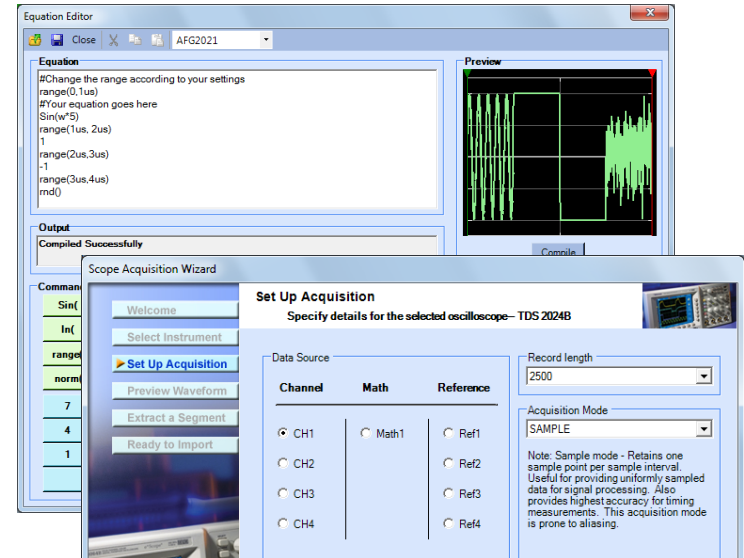
# Connectivity

- Standard USB Host and Device, Optional GPIB and LAN
  - Customized waveforms and settings can be saved in USB memory sticks, and recalled for later use, via the front panel USB host socket
  - USB device, GPIB and LAN fulfills the connectivity requirements to download waveforms to the instrument and remote control from a PC



## ArbExpress® Real-world Waveform Replication Made Easy

- The ArbExpress waveform editing software ships free with every unit
- Convenient way to create and edit customized waveforms
  - Use standard waveforms as templates
  - Use freehand draw, equation editor or point draw modes
- Compatible to Tek oscilloscopes for direct loading of captured signals onto the host PC
- Download created/captured waveforms to AFG for replication via USB, GPIB or LAN connections.
- Facilitates control the AFG2000 remotely





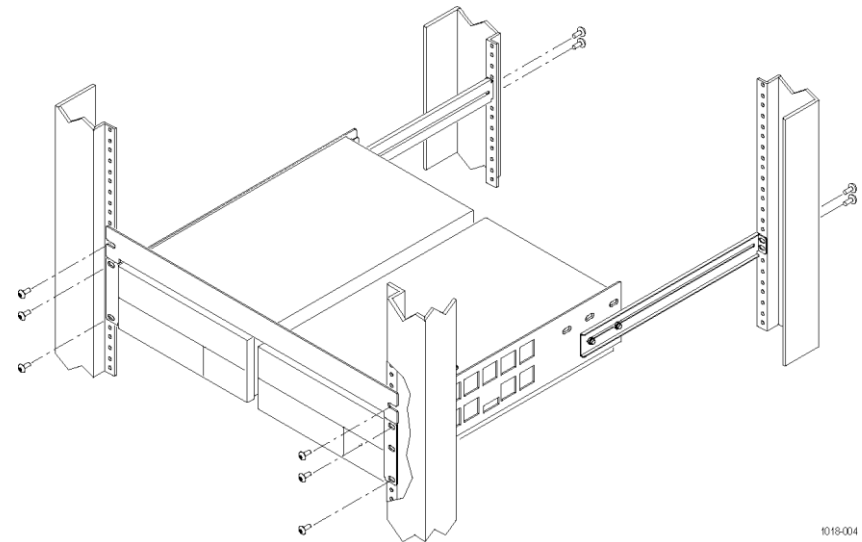
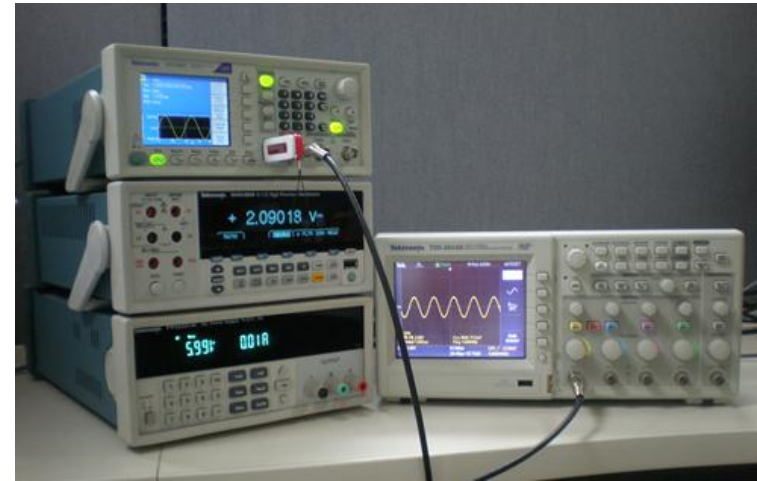
# Increase Productivity with SignalExpress

- National Instruments LabView SignalExpress LE version ships free with every unit
- Integrates AFG2021 to the whole Tektronix Bench portfolio
- Intuitive drag-and-drop interface provides an alternative to writing complex software routines
  - Basic instrument control
  - Data logging
  - Data analysis
  - Measurement trending
  - Documentation



# Compact Form Factor

- The standard 2U height and half-rack width form factor fits both bench top and rack mount applications
- Stackable
  - Easily stack on other Tektronix bench instruments
  - Save valuable bench top space
- Perfect option for ATE and system integration
  - Available RMU2U rack mount kit simplifies rack mount requirements
  - Full support for GPIB & SCPI command environments



1018-004

# Ordering information

## ■ Base Model Pricing

Product	Description	US\$ Master Price
AFG2021	Arbitrary/Function Generator, 1-ch, 20MHz, 250MS/s, 14bit	\$1,590

## ■ Configuration Options

Option	Description	US\$ Master Price
GL	GPIB and LAN interfaces	\$100

## ■ Standard Accessories

Accessory
User Manual
Power Cord
USB Cable
CD-ROM with Programmer manual and service manual
CD-ROM with NI Labview Signal Express and IVI Drivers
CD-ROM with ArbExpress Software
NIST-Traceable Calibration Certificate

## ■ Recommended Accessories

Item	Description	US MSRP
RMU2U	Rackmount kit	\$152
013-0345-00	Fuse adapter, BNC-P to BNC-R	\$312
159-0454-00	Fuse set, 3 pcs, 0.125 A	\$21
012-0482-00	BNC cable shielded, 3 ft	\$206
012-1256-00	BNC cable shielded, 9 ft	\$84
012-0991-00	GPIB cable, double shielded	\$488
011-0049-02	50Ω BNC Terminator	\$135

# Options

## ■ Power Plug Options

Opt	Description	US MSRP
A0	North America	\$0
A1	Universal Euro	\$0
A2	United Kingdom	\$0
A3	Australia	\$0
A5	Switzerland	\$0
A6	Japan	\$0
A10	China	\$0
A11	India	\$0
A12	Brazil	\$0
A99	No power cord or adapter	\$0

## ■ Language Options

Opt	Description	US MSRP
L0	English manual	\$0
L1	French manual	\$0
L2	Italian manual	\$0
L3	German manual	\$0
L4	Spanish manual	\$0
L5	Japanese manual	\$0
L6	Portuguese manual	\$0
L7	Simple Chinese manual	\$0
L8	Traditional Chinese manual	\$0
L9	Korean manual	\$0
L10	Russian manual	\$0
L99	No Manual	\$0

## ■ Service Options

Opt	Description	US MSRP
C3	Calibration service 3 years	\$390
C5	Calibration service 5 years	\$738
D1	Calibration data report	\$65
D3	Calibration data report 3 years (with C3)	\$82
D5	Calibration data report 5 years (with C5)	\$163
R5	Repair service 5 years	\$260
R5DW	Repair Service Coverage 5 Years (starts at time of customer instrument purchase)	\$260

# Key Dates

Activity	Date
Order Queue Opens	▪ June 10, 2012
Shipments Begin	▪ July 03, 2012
Public Announcement *	▪ August 07, 2012

\* Product availability: target is 4 weeks.

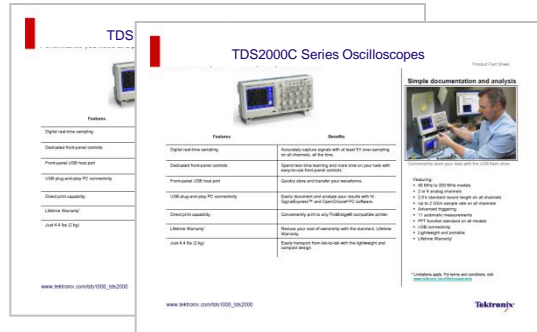
# Demos & Training

- Demo Units
  - Distribution channel partners can opt to utilize the AFG2000 as demo for the entire AFG family
- Training
  - Level 1 CDT training and a demo guide will be developed as part of the product launch and will be made available through the Partner net

# Demand Generation and Marketing Collateral



Customer Presentation



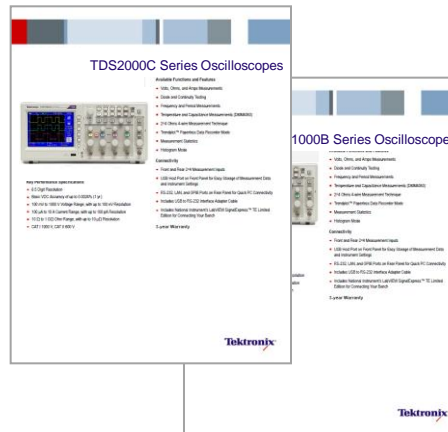
Product Fact Sheets



Product Material Q3



Web Content



Product Datasheets



Application Notes Q3

# Front panel

On-line help in 8 languages

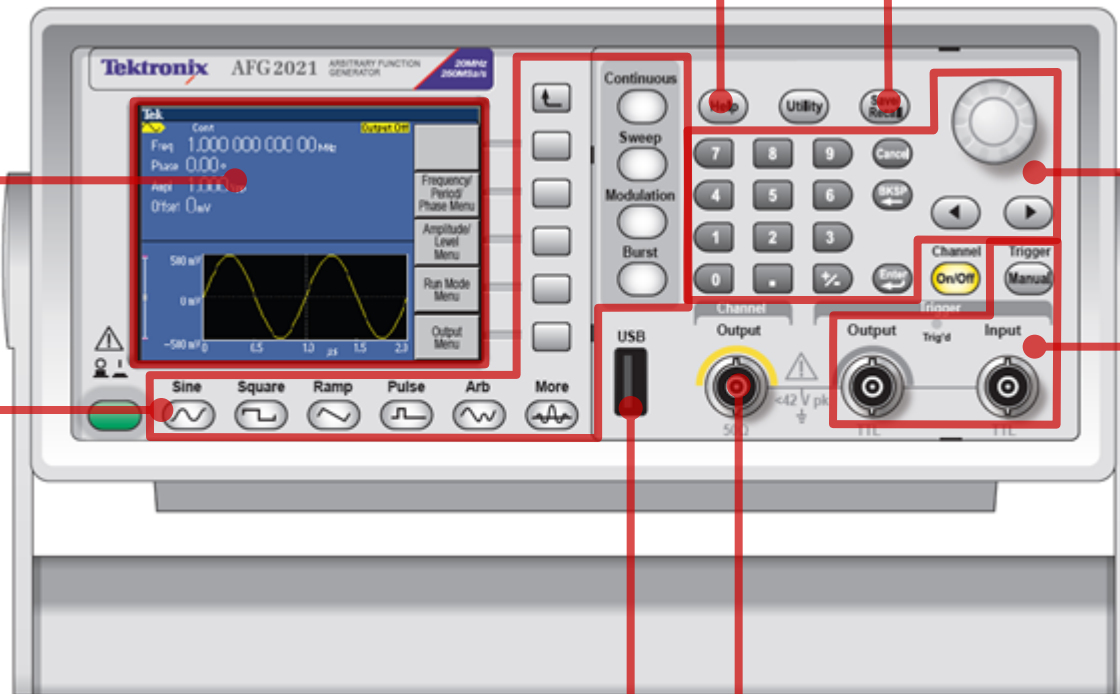
Save/recall settings to/from internal or USB memory

Rotary knob and key pad provide two ways to change numeric settings

Trigger Input / Output and Manual Trigger ease the effort for multi-instrument synchronization

USB Host on Front panel for waveform and setting save/recall

Floating output up to 42Vpk



3.5" Color TFT LCD Displays waveform and settings in text and graphic

Shortcut buttons for easy access to frequently used functions and settings



# Rear panel

- Rear panel of base model



- Rear panel of model with GL option



External Modulating Signal Input External Reference Clock Input

GPIB (optional)

USB Device (optional) Ethernet LAN 10/100 M

## X-ON Electronics

Largest Supplier of Electrical and Electronic Components

*Click to view similar products for [Function Generators & Synthesisers](#) category:*

*Click to view products by [Tektronix](#) manufacturer:*

Other Similar products are found below :

[3001](#) [CT3734](#) [4047B](#) [4010A](#) [SFG-210](#) [SFG-205](#) [33502A/903](#) [4013B](#) [AD9166BBPZ](#) [CT3736](#) [FIT0778](#) [28II](#) [28IIEX/ETL](#) [3446GPBU](#)  
[EDU33211A](#) [EDU33212A](#) [U2010A](#) [MOKU:GO M1 \(STORM\)](#) [MOKU:GO M0 \(STORM\)](#) [MOKU:GO M2 \(STORM\)](#) [MOKU:GO M0](#)  
[\(WHITE\)](#) [MOKU:GO M1 \(WHITE\)](#) [MOKU:GO M2 \(WHITE\)](#) [IZD0024](#) [114991659](#) [T3AFG10](#) [T3AFG120](#) [T3AFG500](#) [T3AFG40](#) [T3AFG5](#)  
[T3AFG30](#) [T3AFG60](#) [T3AFG80](#) [W09-4A-12V](#) [33509B](#) [33519B](#) [33512B](#) [33520B](#) [33522B](#) [AFG31051](#) [AFG31101](#) [AFG31152](#) [AFG31251](#)  
[AFG31252](#) [CT3733](#) [33510B/903](#) [4011A](#) [33509B/903](#) [33511B/903](#) [33612A](#)