



Commercial CCS-47 High Power Transfer DC-12GHz Failsafe

The Type CCS-47 is a long life, high performance transfer or crossover switch designed for use in 50 Ohms coaxial transmission lines. The switch is available with either failsafe or latching type actuation operating from a variety of voltage supplies. The primary advantage of this switch over the miniature versions shown on previous pages, is the higher power handling capability.

Specifications

RF Contacts: Break before make

Actuator	Voltage (VDC) 20°C	12	15	28
	Current (mA)	600	480	250

Switching Time: 30 msec max

Connectors: N-Type (f), TNC (f)(max frequency 11GHz only) or SMA(f)

Weight: 6 oz. max

Temperature Range: -40°C to +65°C (Operating)

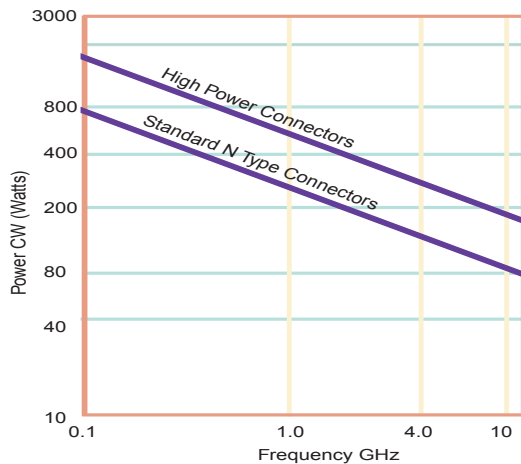
Shock: MIL-STD-202 Method 213, Condition D (500G Non Operating)

Vibration: MIL-STD-202 Method 214, Condition D (10G RMS Non Operating)

Humidity: Moisture Seal Available

MTBF: 6.8 Million Hours (MIL-HDBK-217F Fixed, 25°C, <1 Cycle per hour)

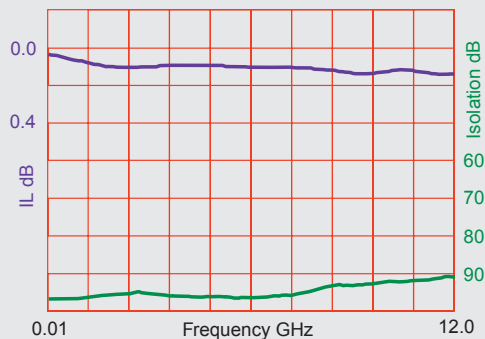
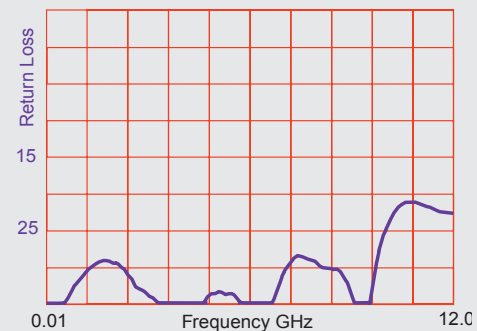
RF Power Handling:



Specifications

	DC-1 GHz	1-4 GHz	4-12 GHz
VSWR (max)	1.25:1	1.40:1	1.80:1
Insertion Loss (min)	0.30 dB	0.40 dB	0.50 dB
Isolation (max)	70.0 dB	60.0 dB	60.0 dB

Typical Performance



Specifications subject to change without notice.

www.teledynecoax.com
email: coax@teledyne.com

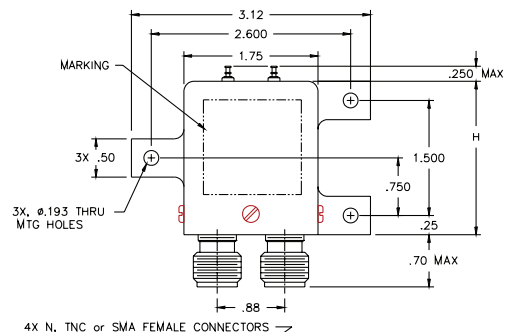
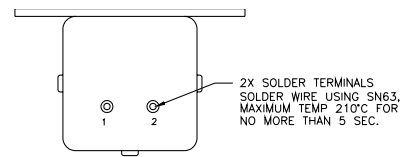
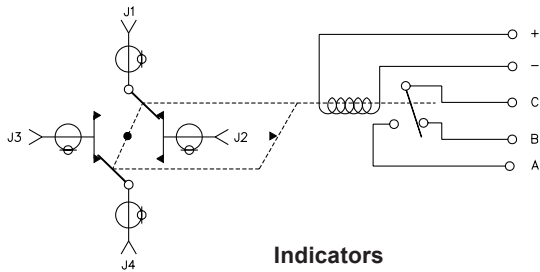
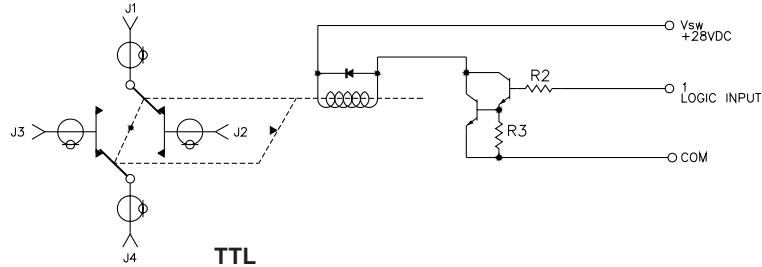
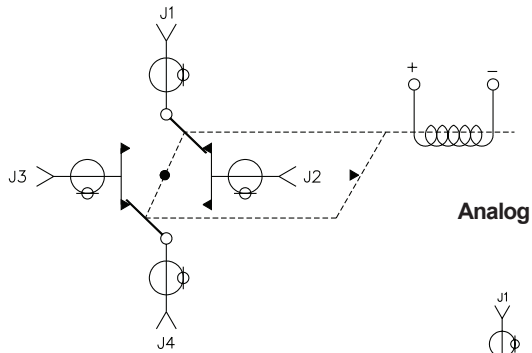
Tel: (800) 351-7368

10/2007

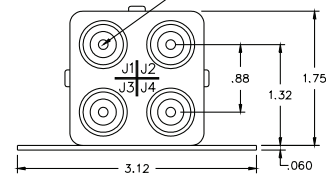
Commercial CCS-47

High Power Transfer DC-12GHz

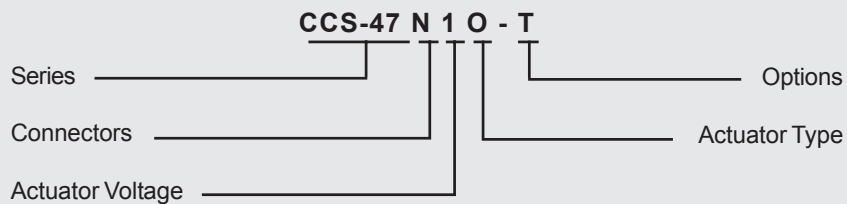
Failsafe



H = 2.10 STD Model
H = 2.60 TTL Model



Part Numbering System for CCS-47 (Failsafe)



Connector

S: SMA Female
N: N Type Female
T: TNC Female(11GHz)

Actuator Voltage

1: 28Vdc Failsafe
2: 15Vdc Failsafe
3: 12Vdc Failsafe

Actuator Type

O: No Indicator Contacts
C: Indicator Contacts

Options

T: TTL Drivers with Diodes
R: Positive + Common

For other options contact Factory



Specifications subject to change without notice.

www.teledynecoax.com
email: coax@teledyne.com

Tel: (800) 351-7368
10/2007

X-ON Electronics

Largest Supplier of Electrical and Electronic Components

Click to view similar products for [Coaxial Switches](#) category:

Click to view products by [Teledyne](#) manufacturer:

Other Similar products are found below :

[CR-53S10](#) [R570012030](#) [R570022105](#) [R570123005](#) [R570262100](#) [R570312100](#) [R570323100](#) [R570363010](#) [R570423000](#) [R570432000](#)
[R570433000](#) [R570442100](#) [R570D33000](#) [R570E52010](#) [R574402410](#) [R585422030](#) [R585423230](#) [R585462200](#) [R599311000](#) [R599906000](#)
[ARD70224](#) [CCT-38S150-T](#) [R570012000](#) [R570063100](#) [R570143005](#) [R570313100](#) [R570333040](#) [R570343000](#) [R570343040](#) [R570362100](#)
[R570423030](#) [R570432010](#) [R570433100](#) [R570443030](#) [R570463100](#) [R570F63010](#) [R573003425](#) [R573302435](#) [R573433600](#) [R577042100](#)
[R577442100](#) [CR-58S160](#) [R570442010](#) [R573482620](#) [R573422420](#) [R574413300](#) [R573413685](#) [R585343230](#) [R573302520](#) [R577F13007](#)