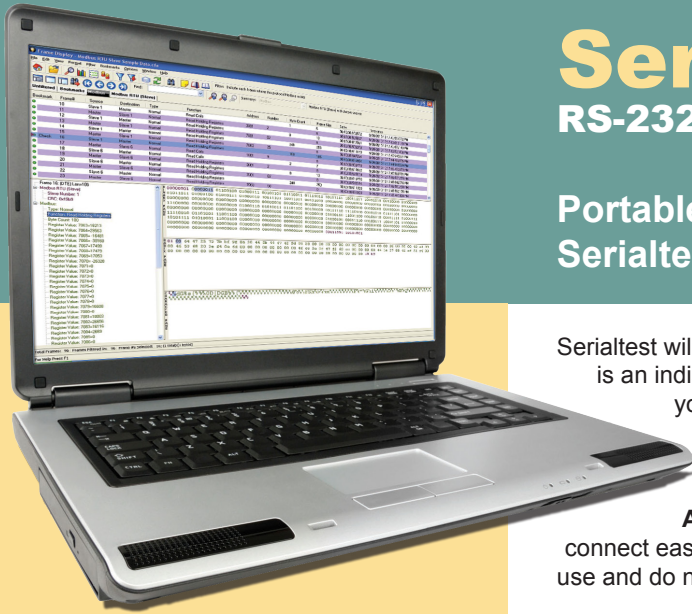


Serialtest®

RS-232/422/485 Serial Analyzer

Portable, flexible, and easy to use, Serialtest helps you isolate problems fast.



Serialtest will help you quickly debug and fix serial communication problems. It is an indispensable troubleshooting tool used across many industries. Once you've used Serialtest, you will never want to work on another serial communication project without it.

Serialtest uses the **Async RS-232 ComProbe® II** and the **Async RS-422/485 ComProbe®** hardware. These ComProbes connect easily to the PC via USB ports. They are portable (finger-sized), easy to use and do not require external power.

Troubleshoot Serial Data Communications Live

- High-speed, real-time data analysis
- Capture & View data and control signals live
- Error conditions are detected live and highlighted in red
- Built-in decoders for Modbus RTU & ASCII, Async PPP, SLIP, and TCP/IP
- Create your own decoders with easy to use DecoderScript™ language
- Display Filters and Detailed decodes for rapid and easy analysis

Portable and Easy-to-Use ComProbes

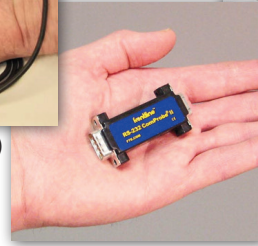
- Async RS-232 ComProbe II and Async RS-422/485 ComProbe
- Easy connectivity via USB – Both ComProbes plug into USB ports
- Eliminates the need for PCMCIA cards
- Three easy ways to tap in to RS-232 communication networks
- Supports 2-wire and 4-wire RS-422/485 networks
- Supports many non-standard baud rates up to 921.6 Kbps

Efficient Data Capture

- Captures all data and control signals
- Time stamp resolution up to 100 nanoseconds
- Automatically calculates delta times (time difference between bytes or frames) and effective data rates



RS-422/485 ComProbe (Async)



RS-232 ComProbe II (Async)



In-line RS-232 ComProbe II (Async)

Decode Pane
comprehensive
layered decodes
of each frame
with concise
descriptions

Summary Pane
one line overview of each data frame/message. Click to reveal detail.

#	Frames	Source	Destination	Type	Function	Address	Number	Byte Count	Value	Exception	Frame Size	Data	Timestamp
15	Slave 1	Master	Normal	Read Input Registers	12802	1	2	15	00.00.00.00		15	00.00.00.00	5/5/2003 4:53:00.887839 PM
16	Master	Slave 1	Normal	Read Input Registers	12802	1	2	17	00.00.00.00		17	00.00.00.00	5/5/2003 4:53:00.888035 PM
17	Slave 1	Master	Normal	Read Input Registers	12803	14	2	15	00.00.00.00		15	00.00.00.00	5/5/2003 4:53:00.888140 PM
18	Master	Slave 1	Normal	Read Input Registers	12803	14	2	17	00.00.00.00		17	00.00.00.00	5/5/2003 4:53:00.887953 PM
19	Slave 1	Master	Normal	Read Input Registers	13056	16	28	67	00.00.00.00		67	00.00.00.00	5/5/2003 4:53:00.838076 PM
20	Master	Slave 1	Normal	Write Multiple Registers	13056	16	51	51	00.00.00.00		51	00.00.00.00	5/5/2003 4:53:01.056002 PM
21	Slave 1	Master	Normal	Write Multiple Registers	13056	16	17	00.00.00.00		17	00.00.00.00	5/5/2003 4:53:01.117953 PM	
22	Master	Slave 1	Normal	Read Input Registers	12802	1	4	17	00.00.00.00		17	00.00.00.00	5/5/2003 4:53:01.223393 PM
23	Slave 1	Master	Normal	Read Input Registers	12802	1	4	15	00.00.00.00		15	00.00.00.00	5/5/2003 4:53:01.223506 PM
24	Master	Slave 1	Normal	Read Input Registers	12803	14	4	17	00.00.00.00		17	00.00.00.00	5/5/2003 4:53:01.223600 PM

Logical Data Panes
data in binary, hex, and character format

Event Display
shows raw hex data

Breakout Box
view control signals

SPECIFICATIONS

Supported Protocols

- Modbus RTU \ ASCII
- PPP
- SLIP
- TCP/IP
- Custom decodes
- Saia-Burgess S-Bus

Data Interfaces

- RS-232/422/485/449/530 (Some require extra hardware)

Communication Modes

- Asynchronous only

Data Rates

Up to 921.6Kbps, including support for many non-standard data rates. The complete range is:

300 - 220000	377748 - 409226
220353 - 238715	440706 - 477430
240385 - 260416	528847 - 527916
264424 - 286458	661058 - 716145
293804 - 318287	881411 - 954861
330529 - 358072	

(all values in bits per second)

Character Sets

- ASCII, 7-bit ASCII, EBCDIC, Baudot

Word Length

- 5, 6, 7, 8 bits

Stop Bits

- 1, 1.5, 2

PARTIAL USER LIST

- **Petroleum**
ExxonMobil, Chevron, Gilbarco
- **Defense and Aerospace**
Lockheed Martin, Boeing, Northrop Grumman
- **OEMs**
Rockwell Automation, GE, Emerson
- **Municipalities**
Washington DC Water/Sewer, City of Los Angeles
- **Utility Industry**
Cooper Power, DTE Energy, American Electric Power
- **Gaming Industry**
Scientific Games, Bally Gaming Systems, MultiMedia Games, Video Gaming Technologies
- **Heavy Industry**
Caterpillar, John Deere
- **Medical/Pharmaceutical**
Merck & Co., Pfizer, Tyco Healthcare, Baxter Healthcare
- **Transportation**
GE Locomotive, Union Pacific Railroad, Canadian Pacific Railway

PC System Requirements

- Pentium 1 GHz or faster
- Windows XP (32-bit), Windows 7 (32-bit, 64-bit)
- RAM: 1 GB minimum, 2 GB recommended
- 50 MB free hard disk space
- One USB 2.0 Port

Serialtest® RS-232/422/485 Serial Analyzer

Unequaled Protocol Analysis only from Frontline

Intuitive Data Displays

- Live Breakout Box shows captured control signal transitions
- Event Display and Frame Display windows provide live data analysis
- View detailed frame/packet information in multiple side by side windows

Quick & Easy Troubleshooting

- Filter on specific packet fields including node addresses and frame types
- Search by timestamp, control signals, packet errors, and data patterns
- Save unlimited configurations

Transmit Capabilities

- Transmit strings or files once, multiple times, or continuously to detect errors
- Insert delays by millisecond, second, or minute increments
- Set control leads on or off

THE FRONTLINE EDGE

Trusted Expertise and Unequaled Protocol Analysis Experience

Frontline® is a proven leader in the protocol analyzer industry. Since 1985, we have developed a host of technology sniffing tools and shipped over 40,000 units around the globe. Serialtest is the foundation of our growing family of ComProbe® Protocol Analysis System protocol analyzers, each of which incorporates a time-tested user interface and the DecoderScript™ decoder scripting language.

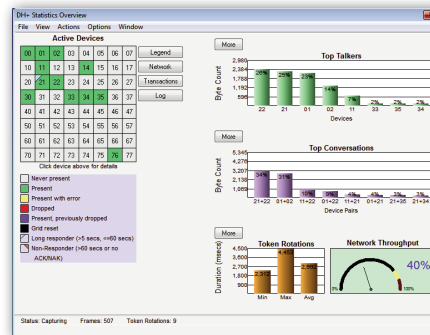
Outstanding Technical Support

Whether you need help using a basic product feature, want an explanation of the protocol stack, or have a question on using DecoderScript to write your custom decodes, you can be assured of a friendly, thorough, and timely response.

Frontline Guarantee and Free Software Updates

Frontline does not charge for software upgrades for Serialtest. Buy once and receive all future updates free of charge.

For more information, please visit www.fte.com/Serialtest



For more information, please visit fte.com/NetDecoder

NetDecoder™ Protocol Analyzer

If you need more than Modbus decodes in your serial analyzer, you need to step up to our NetDecoder industrial communications software product. NetDecoder supports serial, Ethernet, and industrial devices and networks with DF1, PCCC, CSP, EtherNet/IP, DH+, DH-485, DeviceNet, CAN2.0A, Modbus, BSAP, DNP3, PROFINET, CC-Link IE, and ControlNet.

To order or for more information:

www.fte.com
sales@fte.com
800.359.8570 US & Canada
+1.434.984.4500
Fax: 434.984.4505

fte.com
frontline®
Debug Communications FasterSM

X-ON Electronics

Largest Supplier of Electrical and Electronic Components

Click to view similar products for [Protocol Analysers](#) category:

Click to view products by [Teledyne](#) manufacturer:

Other Similar products are found below :

[USB-T0S2-A01-X](#) [USB2-GPIB](#) [USB-TMS2-M02-X](#) [USB-TMS2-M01-X](#) [USB-TMPD-M02-X](#) [USB-TMA2-M01-X](#) [USB-T0S3-A01-X](#) [STA-422/485](#) [ND-422/485](#) [ComProbe BPA Low Energy](#) [ETHERTEST-CP](#)