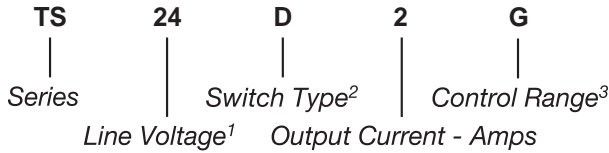


Part Number	Description
TS24D2G	2A, 275 Vac Solid-State Relay



Part Number Explanation



NOTES

- Line Voltage (nominal): 24 = 240 Vac; 3 = 30 Vdc (3–30 Vdc/Vac for TS3R1G)
- Switch Type: D = Zero-cross turn-on; R = Random turn-on
- Control Range: G = 12–30 Vdc/Vac (TS24D2G, TS3R1G) G = 12–30 Vdc (TS3R2G)

MECHANICAL SPECIFICATION

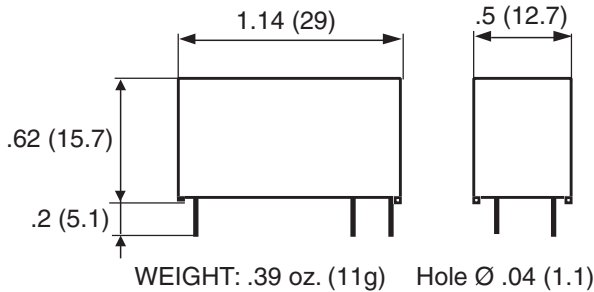


Figure 1 — TS relays; dimensions in inches (mm)

ELECTRICAL SPECIFICATIONS

(+25°C ambient temperature unless otherwise specified)

INPUT (CONTROL) SPECIFICATIONS

	Min	Max	Units
Control Range			
TS242G, TS3R1G	12	30	Vac/Vdc
TS3R2G	12	30	Vdc
Input Current Range	4.1	13	mA
(See Figure 2)			
Must Turn-Off Voltage		2.5	V
Input Resistance (Typical)		2100	Ω

FEATURES/BENEFITS

- Pin-to-pin compatible with electromechanical relays
- AC and DC control
- AC and DC output
- Random and zero-cross turn-on
- Compact size
- High inrush capabilities
- Integrated clamping voltage

DESCRIPTION

The Series TS relays provide AC/DC switching in a compact size. The TS relays also provide an AC/DC control. These relays can withstand high surge currents. The TS relays are pin-to-pin compatible with electromechanical relays and may be used as replacements.

APPLICATIONS

- Interface applications
- Vending machines
- Light/lamp control
- Contactor driver
- Fan speed control

APPROVALS

All models are UL recognized.
UL File Number E128555.

CONTROL CHARACTERISTIC

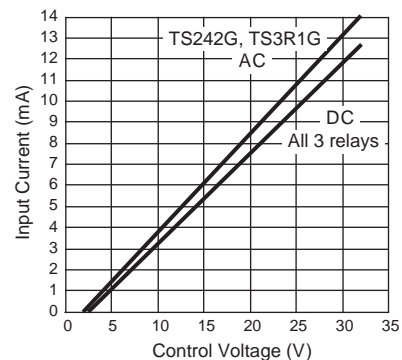


Figure 2

BLOCK DIAGRAM

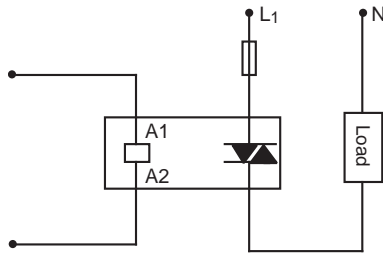


Figure 3a — TS24D2G

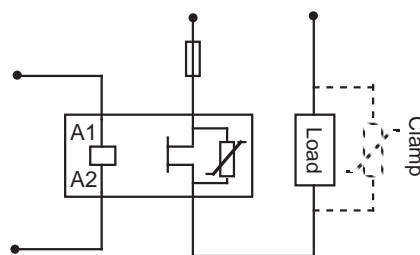


Figure 3b — TS3R1G

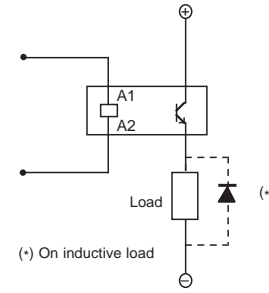


Figure 3c — TS3R2G

GRID DIAGRAM

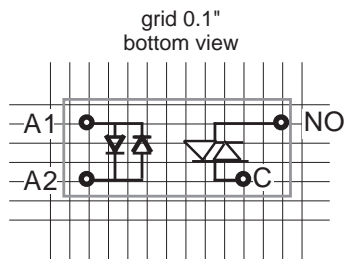


Figure 4a — TS24D2G

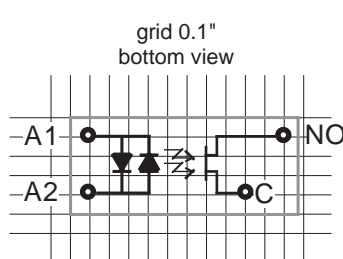


Figure 4b — TS3R1G

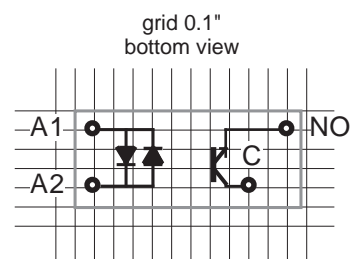


Figure 4c — TS3R2G

ELECTRICAL SPECIFICATIONS
(+25°C ambient temperature unless otherwise specified)

OUTPUT (LOAD) SPECIFICATIONS

	Min	Max	Units
Operating Range			
TS24D2G	12	275	Vrms
TS3R2G	0	30	Vdc
TS3R1G	0	30	Vac/Vdc
Peak Voltage			
TS24D2G		600	V
TS3R2G		60	V
TS3R1G		60	V
Load Current Range			
TS24D2G	.05	2	Arms
TS3R2G	.001	2.5	Arms
TS3R1G	.001	1	Arms
Maximum Surge Current Rating (Non-Repetitive)			
TS24D2G		100	A
TS3R2G		12	A
TS3R1G		2.4	A

OUTPUT (LOAD) SPECIFICATIONS (Continued)

	Min	Max	Units
On-State Voltage Drop			
TS24D2G		1.0	V
TS3R2G		0.5	V
TS3R1G		0.9	V
Zero-Cross Window (Typical)			
TS24D2G		±10	V
TS3R2G		NA	
TS3R1G		NA	
Off-State Leakage Current (60Hz)			
All Relays		1	mA
Operating Frequency Range			
TS24D2G	1	440	Hz
TS3R1G	0	50	KHz
Turn-On Time (60Hz)			
TS24D2G		10	ms
TS3R2G		50	µs
TS3R1G		5	ms

OUTPUT (LOAD) SPECIFICATIONS (Continued)

	Min	Max	Units
Turn-Off Time (60Hz)			
TS24D2G		17	ms
TS3R2G		600	μ s
TS3R1G		10	ms

Off-State dv/dt			
TS24D2G		500	V/ μ s

Switching Frequency			
TS3R2G		100	Hz
TS3R1G		10	ms

I ² t for Match Fusing (<8.3ms)			
TS24D2G		50	A ² s

ENVIRONMENTAL SPECIFICATIONS

	Min	Max	Units
Junction Temperature		125	$^{\circ}$ C

Operating Temperature			
TS24D2G	-40	100	$^{\circ}$ C
TS3R2G	-40	100	$^{\circ}$ C
TS3R1G	-40	90	$^{\circ}$ C

Input-Output Isolation			
TS24D2G	4000		V
TS3R2G	2500		V
TS3R1G	4000		V

Junction-Case Thermal Resistance			
TS24D2G		12	$^{\circ}$ C/W
TS3R2G		12	$^{\circ}$ C/W
TS3R1G		44	$^{\circ}$ C/W

Junction-Ambient Thermal Resistance			
TS24D2G		44	$^{\circ}$ C/W
TS3R2G		44	$^{\circ}$ C/W
TS3R1G		88	$^{\circ}$ C/W

Maximum Soldering Heat (1mm case)		260	$^{\circ}$ C
-----------------------------------	--	-----	--------------

THERMAL CURVE

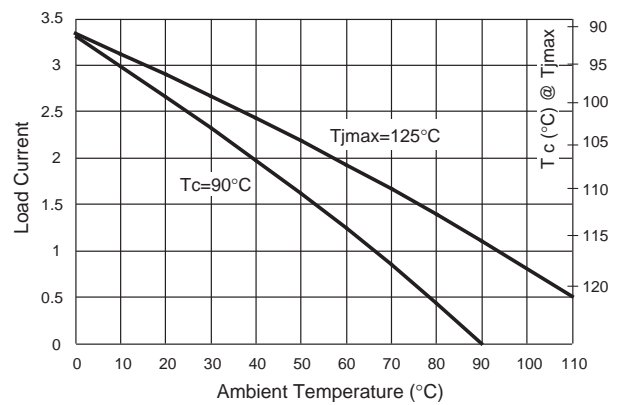


Figure 5a — TS24D2G

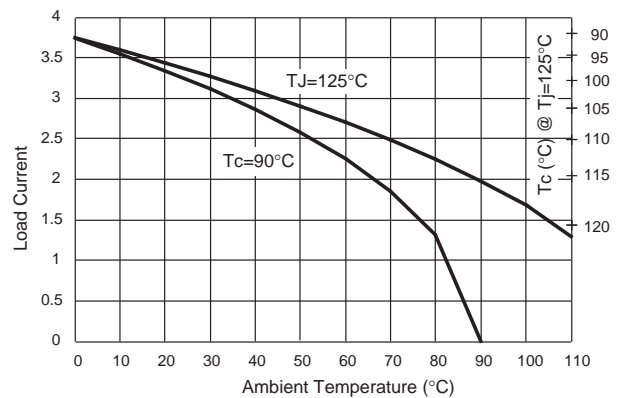


Figure 5b — TS3R2G

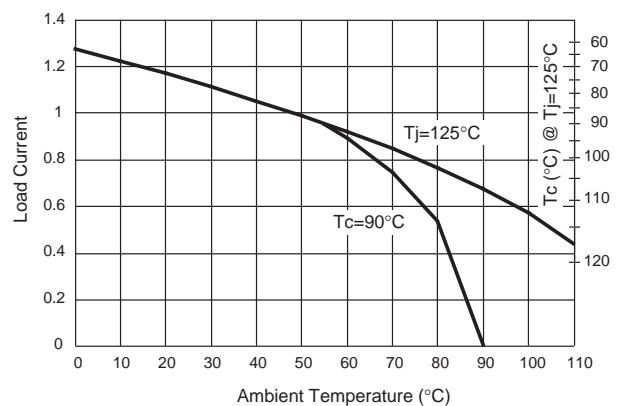


Figure 5c — TS3R1G

NON-REPETITIVE SURGE CURRENT

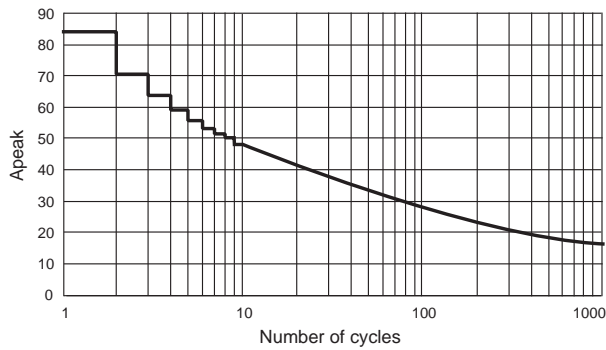


Figure 6a — TS24D2G

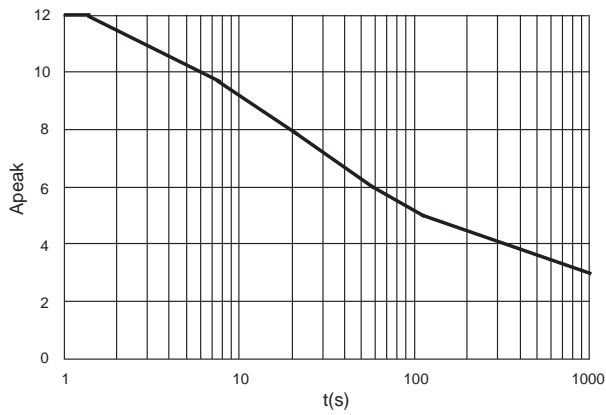


Figure 6b — TS3R2G

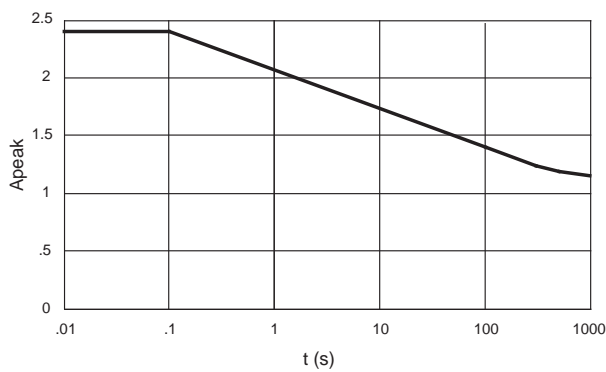


Figure 6c — TS3R1G

NOTES:

1. On inductive loads, a free-wheeling diode (or clamp) is recommended.
2. Electrical specifications at 25°C unless otherwise specified.
3. TS3R2G no polarity on the control pins.
4. For additional/custom options, contact factory.

X-ON Electronics

Largest Supplier of Electrical and Electronic Components

Click to view similar products for [Safety Relays](#) category:

Click to view products by [Teledyne](#) manufacturer:

Other Similar products are found below :

[7-1618103-5](#) [1351-1X](#) [1618082-4](#) [1618111-1](#) [C200HDA003](#) [C200HMR432](#) [C200HMR832](#) [C200HMR833](#) [C28PEDRA](#) [20-050-36X](#)
[C500ETL01](#) [C500OD415CN](#) [2-1618068-0](#) [9-1618103-2](#) [SP10-ETL01](#) [22-060X](#) [C200HNC112](#) [C200HOD214](#) [C500CN812N](#) [1100X](#) [1100-](#)
[42X](#) [V23050A1012A551](#) [6-1618082-4](#) [7-1618103-6](#) [WTD-101X](#) [SP16DRD](#) [SP16DRA](#) [C500-CE243](#) [C500-IDS02-V1](#) [607.5111.020](#)
[DOLD 48173](#) [CS AR-22V230](#) [774316](#) [600PSR-165/300-CU](#) [J73KN-AM-22](#) [G7SA-4A2B DC12](#) [BPS 36-1](#) [BP34 - 101057553](#)
[2TLA010033R3000](#) [2TLA010033R2000](#) [2TLA010033R0000](#) [2TLA010017R0100](#) [2TLA010026R0400](#) [SCR 2-W22-2.5](#) [7S.32.8.230.5110](#)
[7S.34.9.110.4220](#) [3100.0110I](#) [RLY3-OSSD300](#) [RLY3-OSSD400](#) [RLY3-TIME100](#)