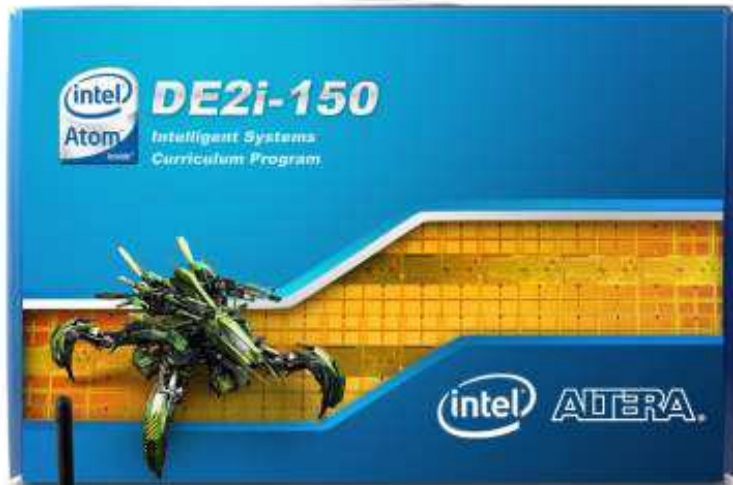


DE2i-150 FPGA Development Kit (P0126)



DE2i-150 Kit Contents



- Development Board
- System CD
- Quartus II CD
- Quick Start Guide
- USB Cable
- Power Cable
- IR Remote
- Loopback Board



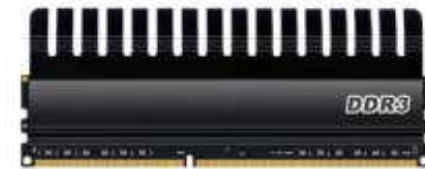
Included Kit Accessories



64GB mSATA
SSD

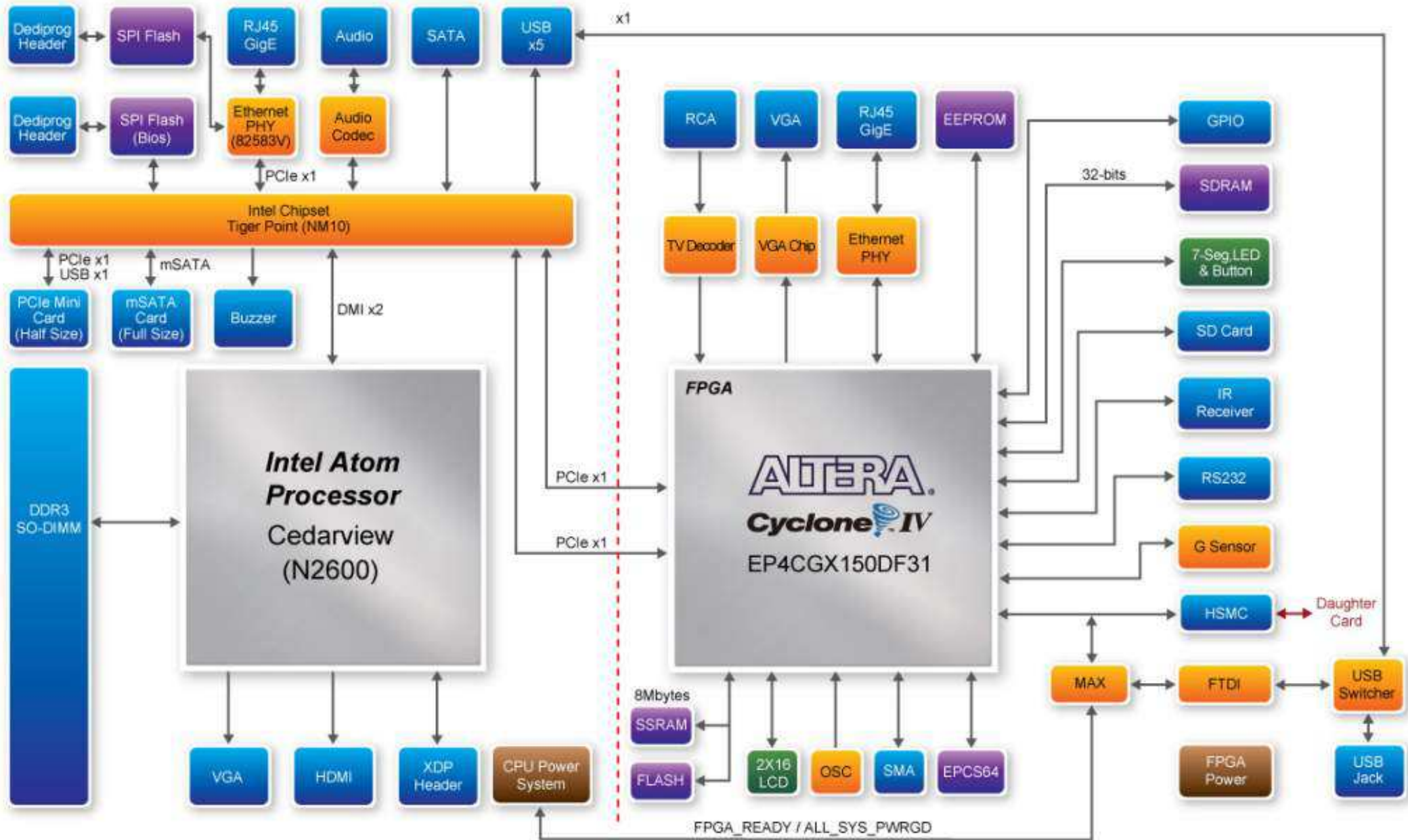


802.11a/g/n
Wi-Fi Module

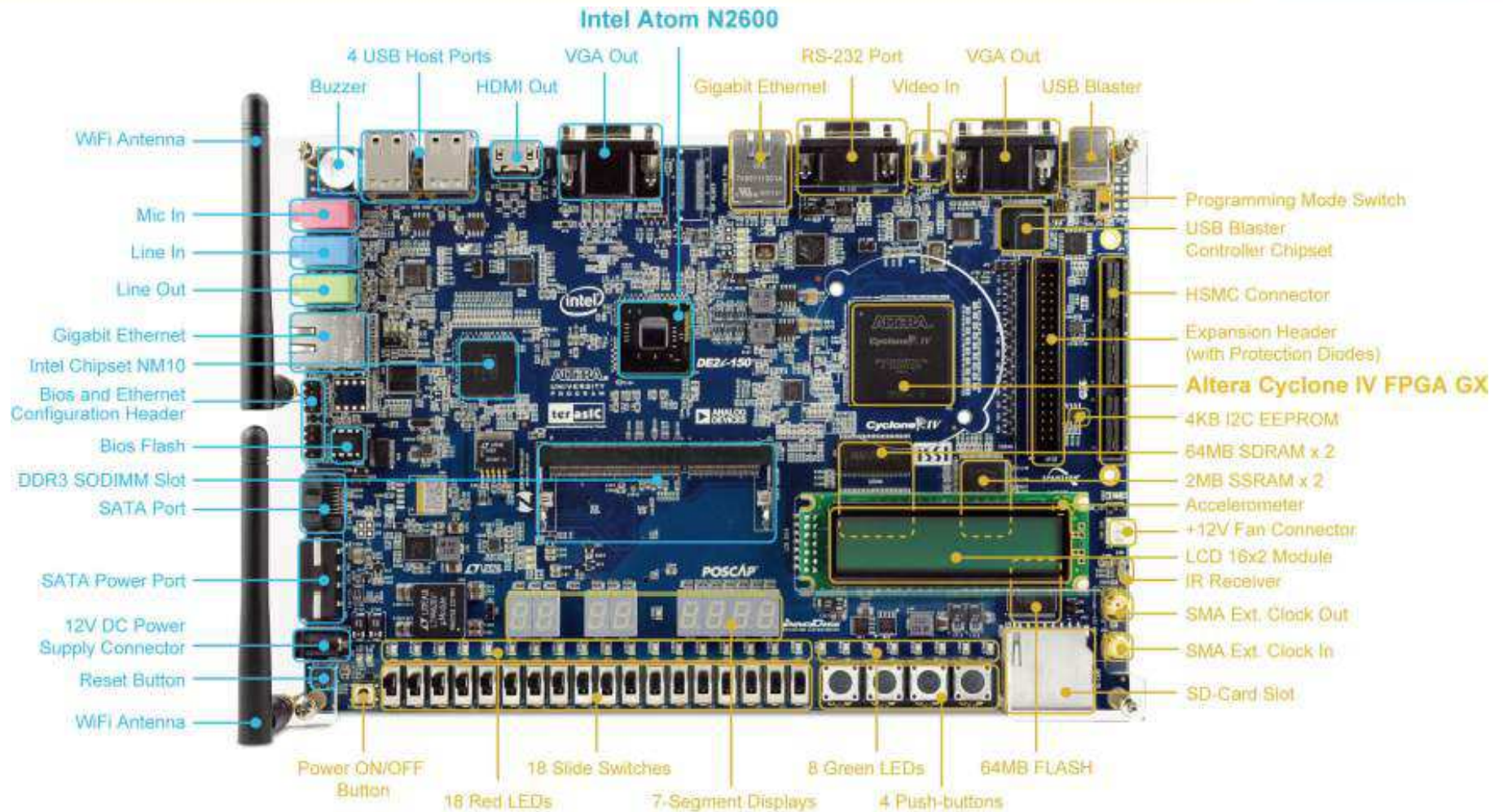


DDR3 Memory

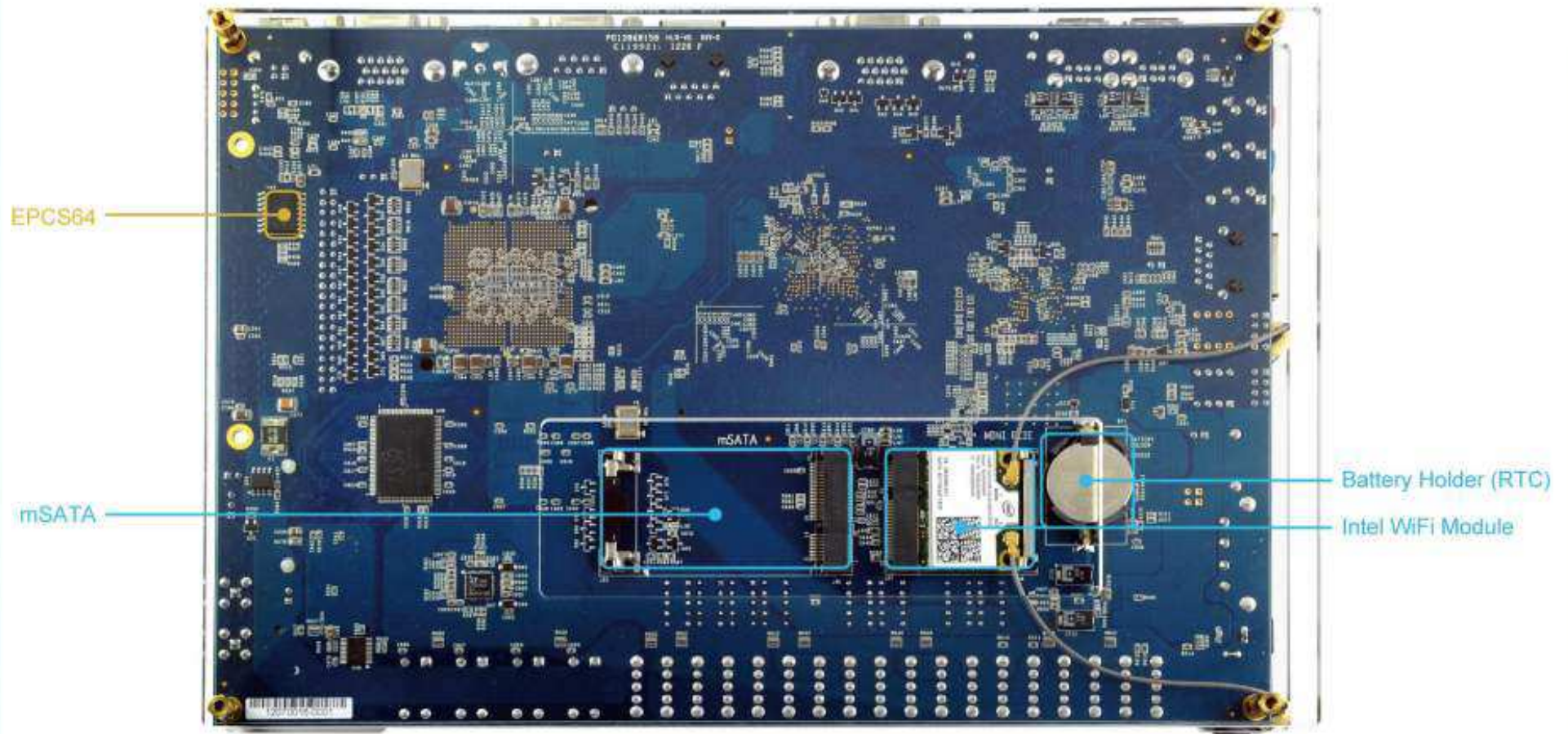
DE2i-150 Block Diagram



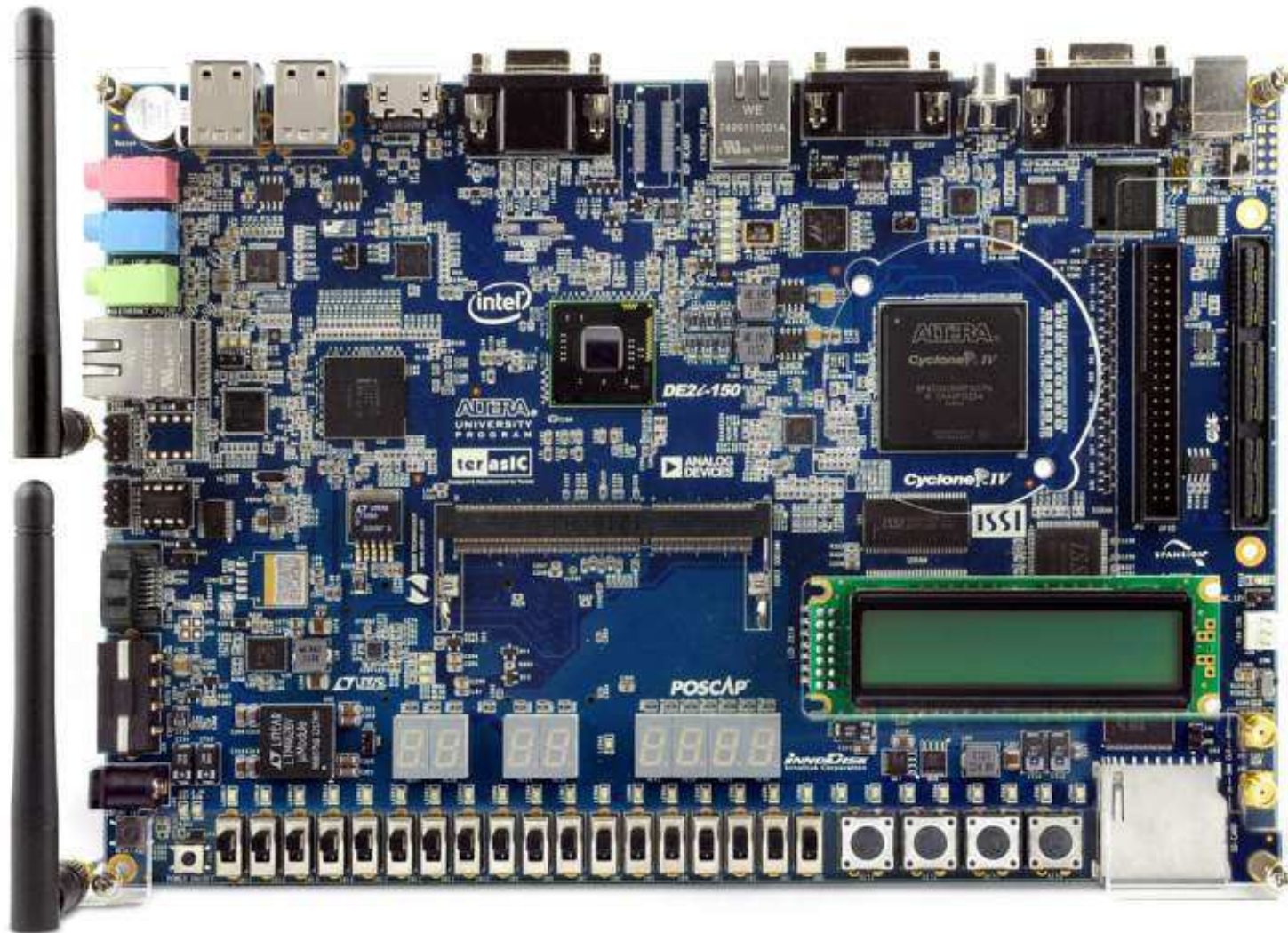
DE2i-150 Floorplan



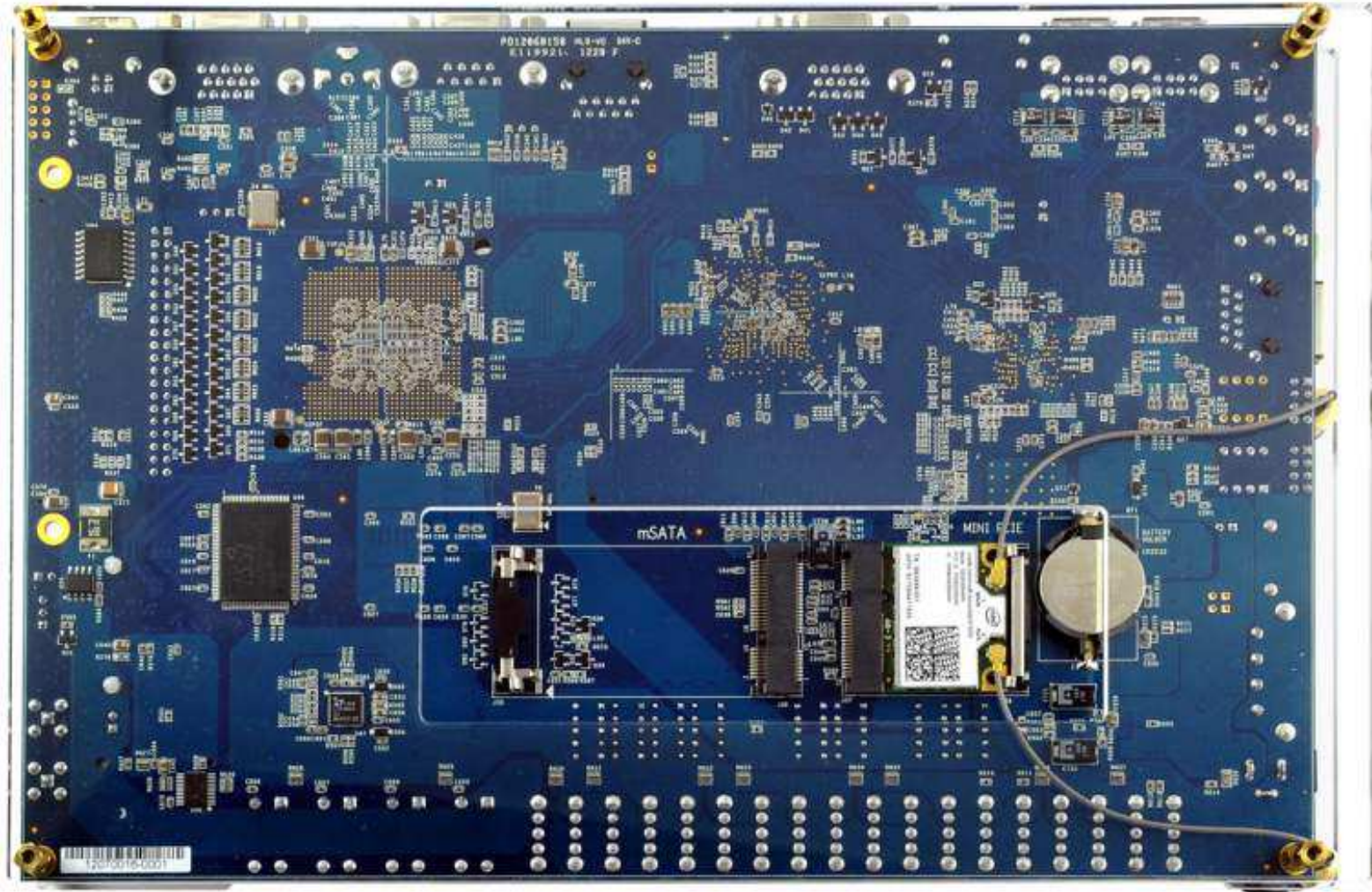
DE2i-150 Floorplan



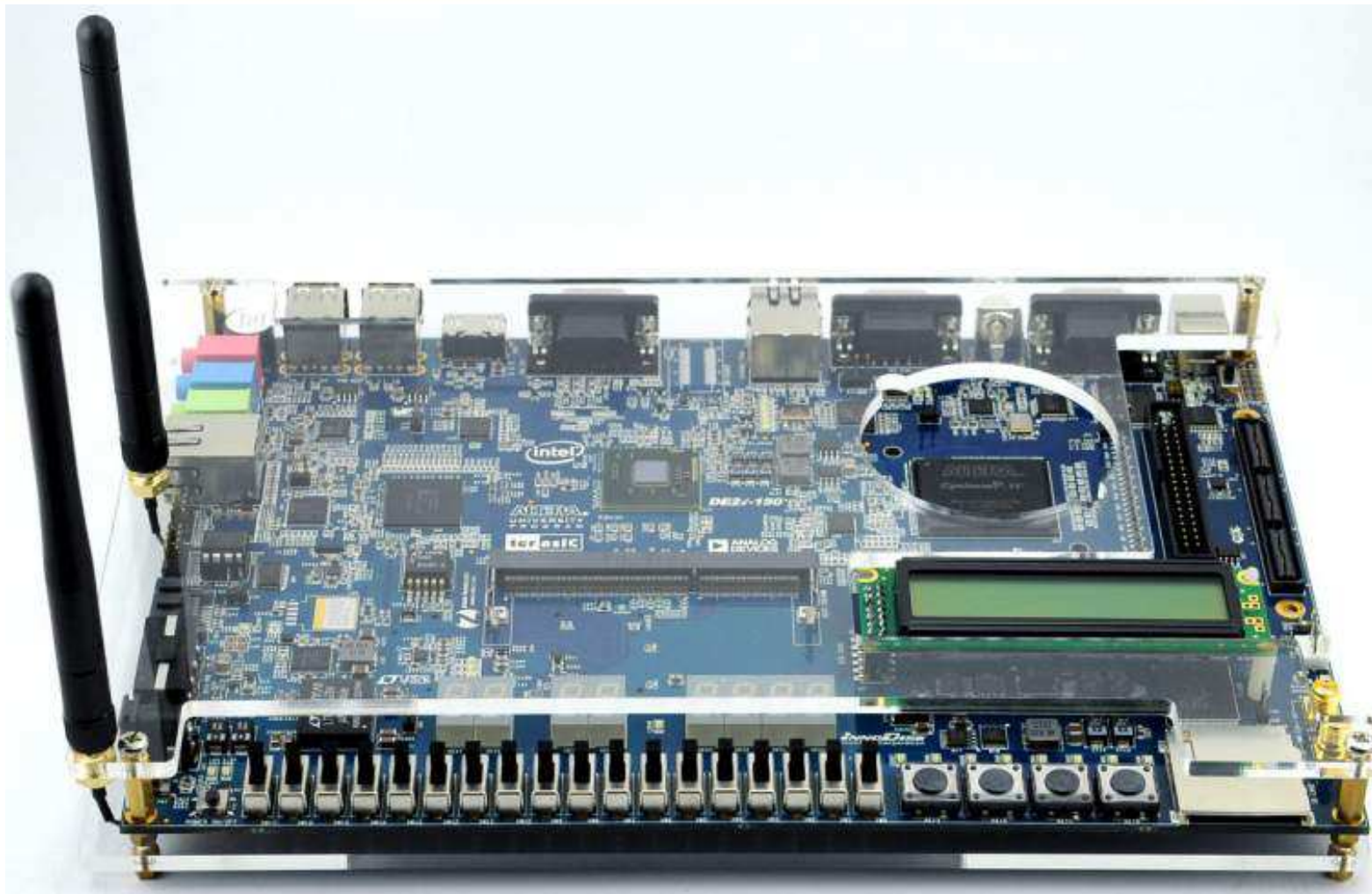
DE2i-150 Front



DE2i-150 Back



DE2i-150 Angle 1



DE2i-150 Angle 2



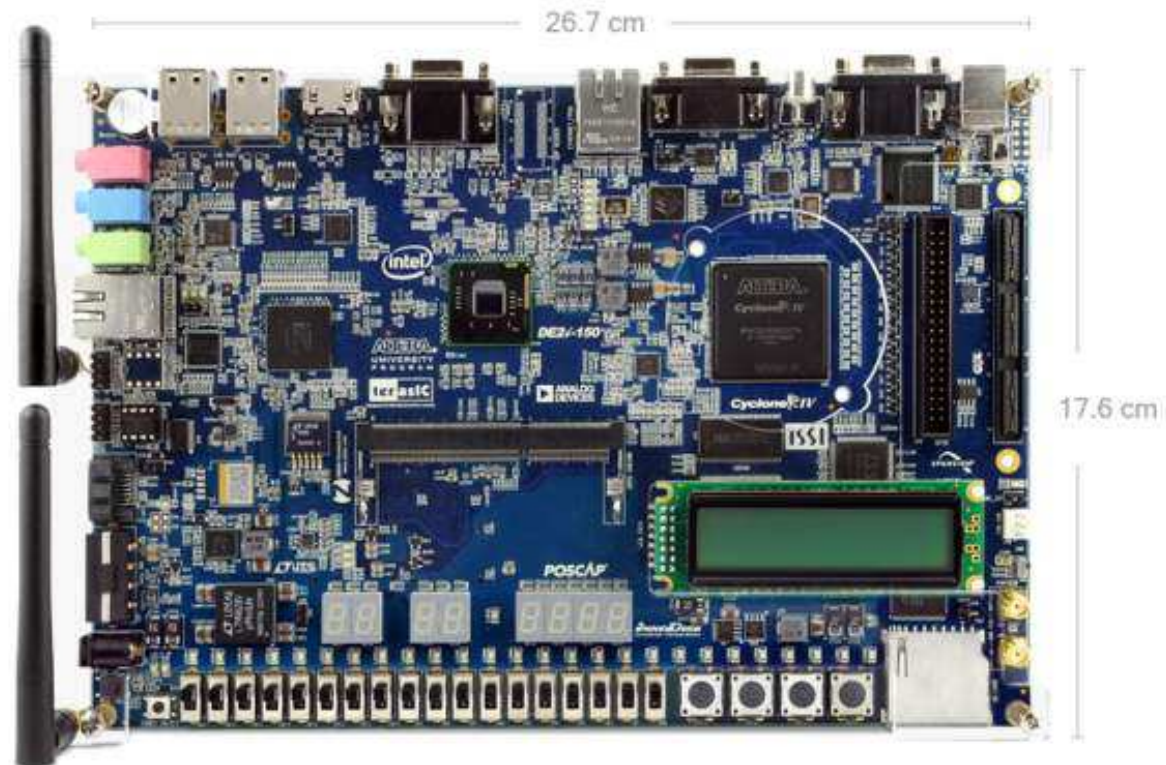
DE2i-150 Side



DE2i-150 Rear

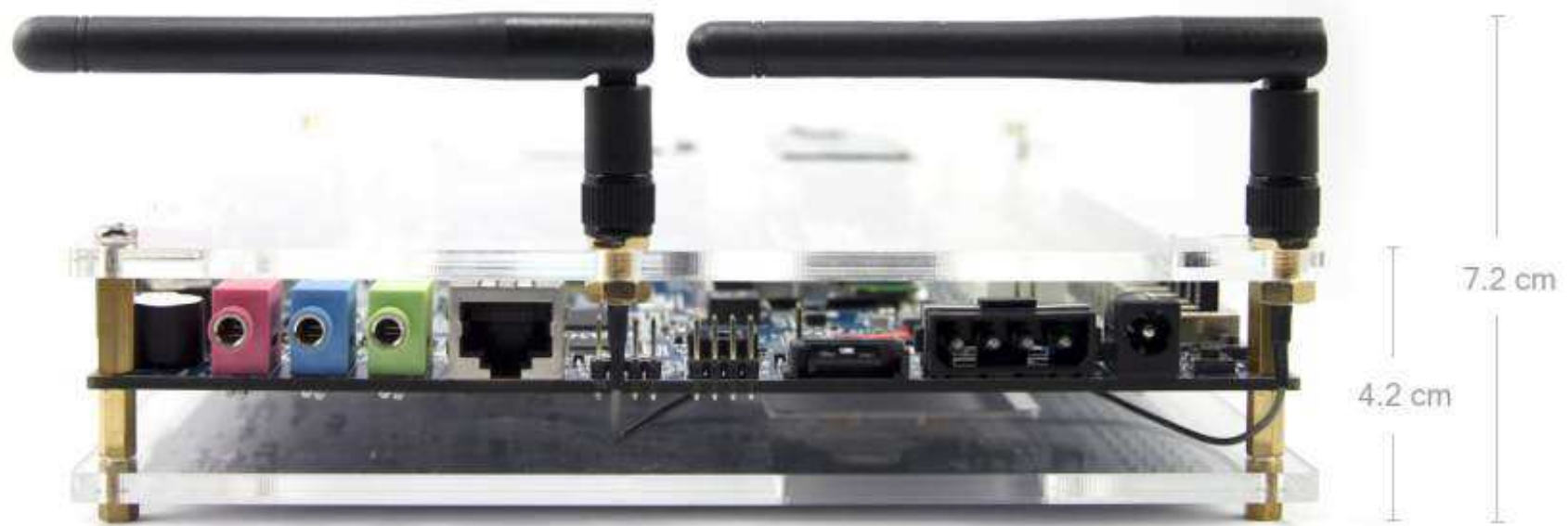


DE2i-150 Measurements



Weight : 470 g
Weight with Acrylic : 820 g

DE2i-150 Measurements (2)



Kit Partners



ZEBOR TECHNOLOGY



Panasonic
ideas for life

innODISK

Cyclone 4 GX-based Features

- VGA Display, TV Decoder (Composite Input)
- Gigabit Ethernet
- SD Card Socket
- IR Receiver, RS232
- Accelerometer
- HSMC & GPIO Expansion Connector
- EEPROM, Flash, SSRAM, SDRAM, and EPCS64(for FPGA Configure)
- Two PCIe x1 (Connected to Intel Atom)
- On board Oscillator and SMAx2 for External Clock Input & Output
- LED, 2x16 LCD, Button, Switch & 7-Segment
- On-board USB Blaster



Intel Atom-based Features

- Audio Input & Output
- HDMI 1.3a
- VGA
- PCIe Mini Card (Half-Size)
- mSATA Card (Full-Size)
- USB 2.0 Host x4
- 10/100/1000 M Ethernet
- SATA Gen2
- DDR3 SO-DIMM Socket



Cyclone IV Links

Cyclone IV Device Handbook:

<http://www.altera.com/literature/hb/cyclone-iv/cyclone4-handbook.pdf>

Cyclone IV Datasheet:

<http://www.altera.com/literature/hb/cyclone-iv/cyiv-51001.pdf>

Teaching Material

Altera University Program FPGA Training:

http://www.altera.com/education/univ/materials/digital_logic/tutorials/unv-tutorials.html

Altera University Program Lab Exercises:

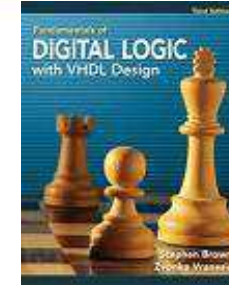
http://www.altera.com/education/univ/materials/digital_logic/labs/unv-labs.html

Teaching Material (2)

Fundamentals of Digital Logic with VHDL/Verilog Design

by Dr. Stephen Brown and Dr. Zvonko Vranesic

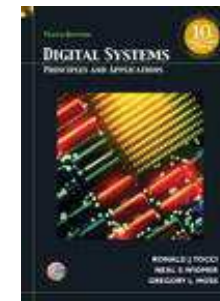
<http://www.amazon.com/dp/0077221435/>



Digital Systems: Principles and Applications, 10/E

by Ronald Tocci, Neal Widmer and Gregory Moss

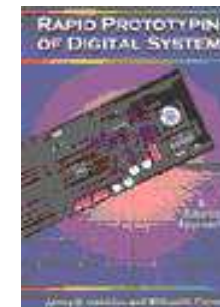
<http://www.amazon.com/dp/0131725793/>



Rapid Prototyping of Digital Systems

by James O. Hamblen and Michael D. Furman

<http://www.amazon.com/dp/0792386043/>



Daughter Card Solutions



Capacitive Touch
Screen



CameraLink Adapter



5 Megapixel Camera



HDMI Input



DVI Input/Output



Ethernet



Serial Digital
Interface



Altera Industrial
Communications



HDMI Output



Aptina Adapter

Daughter Cards are available for purchase at:

<http://cards.terasic.com>

Daughter Card Solutions (2)



[AD/DA](#)



[Mass Storage and Video](#)



[High Speed AD/DA](#)



[Communication](#)



[SATA/SAS](#)

Daughter Cards are available for purchase at:

<http://cards.terasic.com>

X-ON Electronics

Largest Supplier of Electrical and Electronic Components

Click to view similar products for [Programmable Logic IC Development Tools](#) category:

Click to view products by [Terasic Technologies](#) manufacturer:

Other Similar products are found below :

[DK-DEV-5SGXEA7N](#) [88980182](#) [DEV-17526](#) [DEV-17514](#) [LCMXO3L-SMA-EVN](#) [471-014](#) [80-001005](#) [iCE40UP5K-MDP-EVN](#)
[ALTNITROC5GX](#) [471-015](#) [Hinj](#) [SnoMakrR10](#) [DK-DEV-1SDX-P-A](#) [DK-DEV-1SDX-P-0ES](#) [DK-DEV-1SGX-L-A](#) [DK-DEV-1SMC-H-A](#)
[DK-DEV-1SMX-H-0ES](#) [DK-DEV-1SMX-H-A](#) [DK-DEV-4CGX150N](#) [DK-DEV-5CGTD9N](#) [DK-DEV-5CSXC6N](#) [DK-MAXII-1270N](#) [DK-](#)
[SI-1SGX-H-A](#) [DK-SI-1STX-E-0ES](#) [DK-SI-1STX-E-A](#) [DK-SI-5SGXEA7N](#) [EK-10M08E144](#) [ATF15XX-DK3-U](#) [SLG46824V-DIP](#)
[SLG46826V-DIP](#) [240-114-1](#) [6003-410-017](#) [ICE40UP5K-B-EVN](#) [DK-SOC-1SSX-L-D](#) [ICE5LP4K-WDEV-EVN](#) [L-ASC-BRIDGE-EVN](#)
[LC4256ZE-B-EVN](#) [LCMXO2-7000HE-B-EVN](#) [LCMXO3D-9400HC-B-EVN](#) [LCMXO3L-6900C-S-EVN](#) [LF-81AGG-EVN](#) [LFE3-MEZZ-](#)
[EVN](#) [LIF-MD6000-ML-EVN](#) [LPTM-ASC-B-EVN](#) [M2S-HELLO-FPGA-KIT](#) [VIDEO-DC-USXGMII](#) [12GSDIFMCCD](#) [SFP+X4FMCCD](#)
[NAE-CW305-04-7A100-0.10-X](#) [NOVPEK CVLite](#)