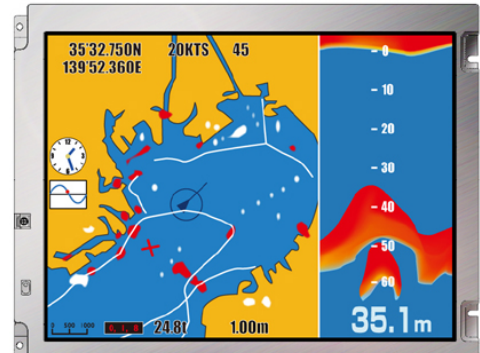


[Features]

- **ColorXcell^{*1}**
- **High luminance(800cd/m²)**
- **High contrast(900:1)**
- **16.77M/262K colors (LVDS RGB 8-bit/6-bit)**
- **Wide temperature(-30°C to +80°C)**
- **Reversible-scan direction**
- **Long-life LED backlight^{*2}**



Pixel	800(H) x 600(V)
Display area	211.2(H) x 158.4(V) mm 10.4 inches (26cm)
Display color	16,777,216 colors/ 262,144 colors
Pixel pitch	0.264(H) x 0.264(V) mm
Luminance	800cd/m ² (typ.)
Contrast ratio	900:1 (typ.)
Viewing angle ^{*3}	Up: 80°,Down: 80°,Left: 80°,Right: 80°
Response time ^{*4}	18ms (typ.)
Signal system	LVDS 1-port RGB 8-bit/6-bit
Power supply voltage	3.3V
Power consumption	6.3W (typ.)
Operating temperature	-30°C to +80°C
Storage temperature	-30°C to +80°C
Polarizer surface	Clear
Module size	243.0 (typ.) x 185.1 (typ.) x 11.0 (max.) mm
Weight	475g (typ.)
Backlight	LED backlight(Replaceable)
LED driver	104PW01F

*1: ColorXcell Technology (Color Enhancement)

*2: 70k hours long life LED

*3: Contrast ratio ≥ 10:1

*4: Ton+Toff (10%←→90%)

*All information is subject to change without notice.

*Screen images are simulated.

<Tianma Japan web site>

Japanese <https://www.tianma.co.jp/jp>

English <https://www.tianma.co.jp/en>

Published date: Jul. 2017
©Tianma Japan, Ltd. 2017

X-ON Electronics

Largest Supplier of Electrical and Electronic Components

Click to view similar products for [TFT Displays & Accessories](#) category:

Click to view products by [Tianma](#) manufacturer:

Other Similar products are found below :

[F3ET2-005-150](#) [HDA430T-3G1H](#) [NL8048AC19-14F](#) [NL6448BC20-21D](#) [NB7W-KBA04](#) [NB-ATT01](#) [NB5Q-ATT01](#) [NB5Q-KBA04](#) [NB-CN001](#) [OAI-80038AA-2008-A](#) [315-U004B15300](#) [UMSH-8596MD-34T \(REV D\)](#) [TX14D23VM5BAA](#) [TCG121WXLRXVNNANX35](#) [EIC-LCD-1080P](#) [T-55619GD065J-LW-ABN](#) [TCG104SVLPEANN-AN30](#) [NL6448BC33-70](#) [NL6448BC20-30D](#) [NL10276BC16-06](#) [NL192108AC10-01D](#) [NL12880BC20-05BD](#) [NL8060BC26-35BA](#) [NL8060BC31-50F](#) [TM070DDHG03-40](#) [PTPW16-070WV1S02](#) [PTPW17-070WV1S02](#) [PTPW16-084SV1S02](#) [MTD0300ECP06DF-1](#) [DEM 640480E](#) [TMH-PW-N \(A-TOUCH\)](#) [RFA6400E-AWH-DNG](#) [RFA6400E-AWH-MNN](#) [RFE430V-AZW-DNS](#) [RFF70VA2-1IW-DHS](#) [RFH1010J-AYH-MNB](#) [RFH700A8-AYH-MNN](#) [RFK101VF-1YH-LHG](#) [RFS390C-AIW-DNN](#) [RFS390C-AIW-DNS](#) [RFS52VA-1ZH-DHN](#) [SM-RVT101HVHFWCA0](#) [SM-RVT101HVHFWN00](#) [SM-RVT101HVHNWC00](#) [SM-RVT101HVHNWC00-B](#) [SM-RVT101HVHNWCA0](#) [SM-RVT101HVHNWN00](#) [SM-RVT101HVLFWCA0](#) [SM-RVT101HVLNWCA0](#) [SM-RVT3.5A320240TFWN00](#) [SM-RVT35HHTFWCA0](#)