



## XO SPECIFICATION

Customer: \_\_\_\_\_  
Customer P/N: \_\_\_\_\_  
TKD P/N: XO32A32K768GDHE002  
Part Name: SMD XO 3225  
Product Description: 32.768kHz  
Issue Date: 2022/5/12

### **CUSTOMER'S APPROVAL**

**(PLEASE RETURN A COPY WITH APPROVAL )**

TKD Science and Technology Co.,Ltd  
泰晶科技股份有限公司

<b>Approved</b>	<b>Checked</b>	<b>Designer</b>
Zhong Yuan Hua	Zhan Chao	Li Yan

地址：湖北省随州市高新区神农大道9号泰晶科技园

Address: TKD Technology Park, No.9, ShenNong Avenue, High-tech Zone, SuiZhou, Hubei

Sales Tel: 0722-7509016, Fax: 0722-7509036, URL: www.sztkd.com



Rev.	Description of Revision History	Date	Designer	Checked By
A	New revision	2022/5/12	Li Yan	Zhan Chao



## XO SPECIFICATION

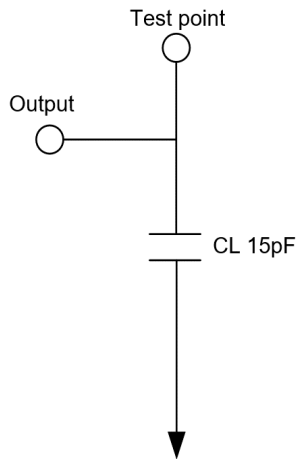
- 1.Description** : SMD Simple Packaged Xtal Oscillator 3225
- 2.Nominal Frequency** : 32.768kHz
- 3.Electrical Specifications** :

Item	Parameters	Condition	Electrical Specifications			
			Min	Typ	Max	Units
1	Nominal Frequency		32.768			kHz
2	Frequency Tolerance	Note1	-30		30	ppm
3	Operating Temperature Range		-40		85	°C
4	Supply Voltage		1.8±10%			V
5	Current Consumption	Operating			80	uA
6	Output Waveform		CMOS			
7	Output Load		15			pF
8	Duty Cycle		45	50	55	%
9	Output Rise/Fall Time				50	ns
10	High Output Voltage		0.9Vdd			V
11	Low Output Voltage				0.1Vdd	V
12	Enable		Vdd×0.7			V
13	Disable				Vdd×0.3	V
14	Aging	Frist year	-3		3	ppm
15	Start-up Time				5	ms
16	Storage Temperature		-55		125	°C

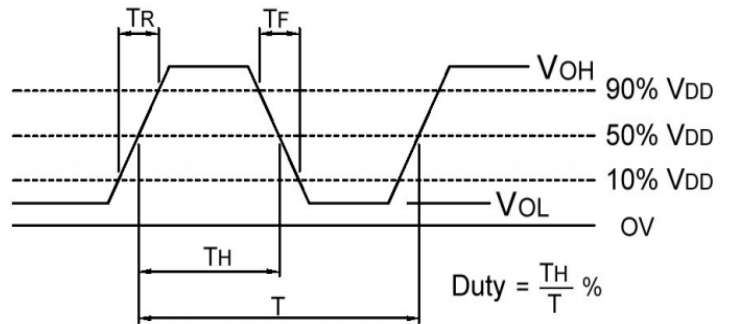
Note1 Frequency stability includes frequency tolerance@25°C and frequency stability vs. operating temperature range and voltage variance and first year aging



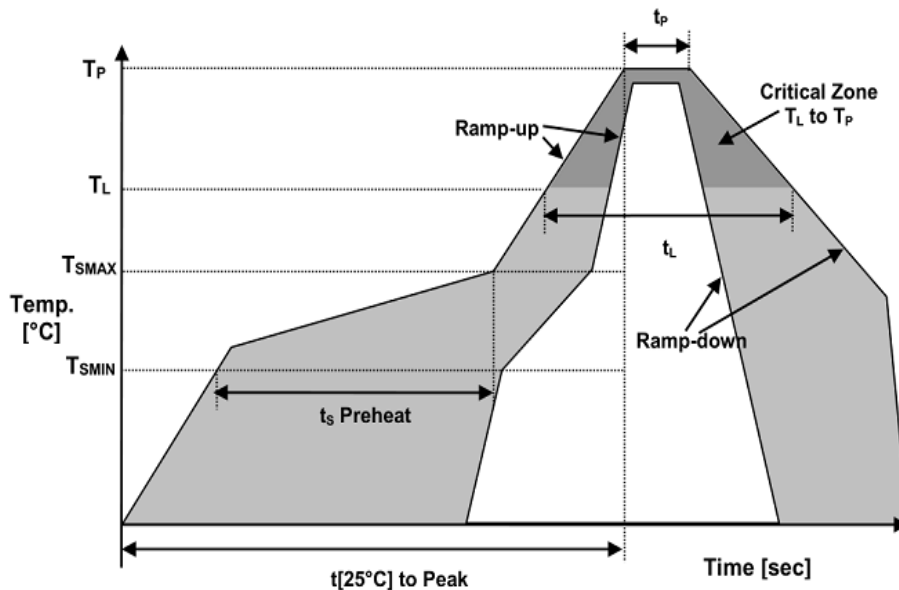
#### 4.Test Circuit (CMOS Load)



#### 5.Output Waveform (CMOS Load)



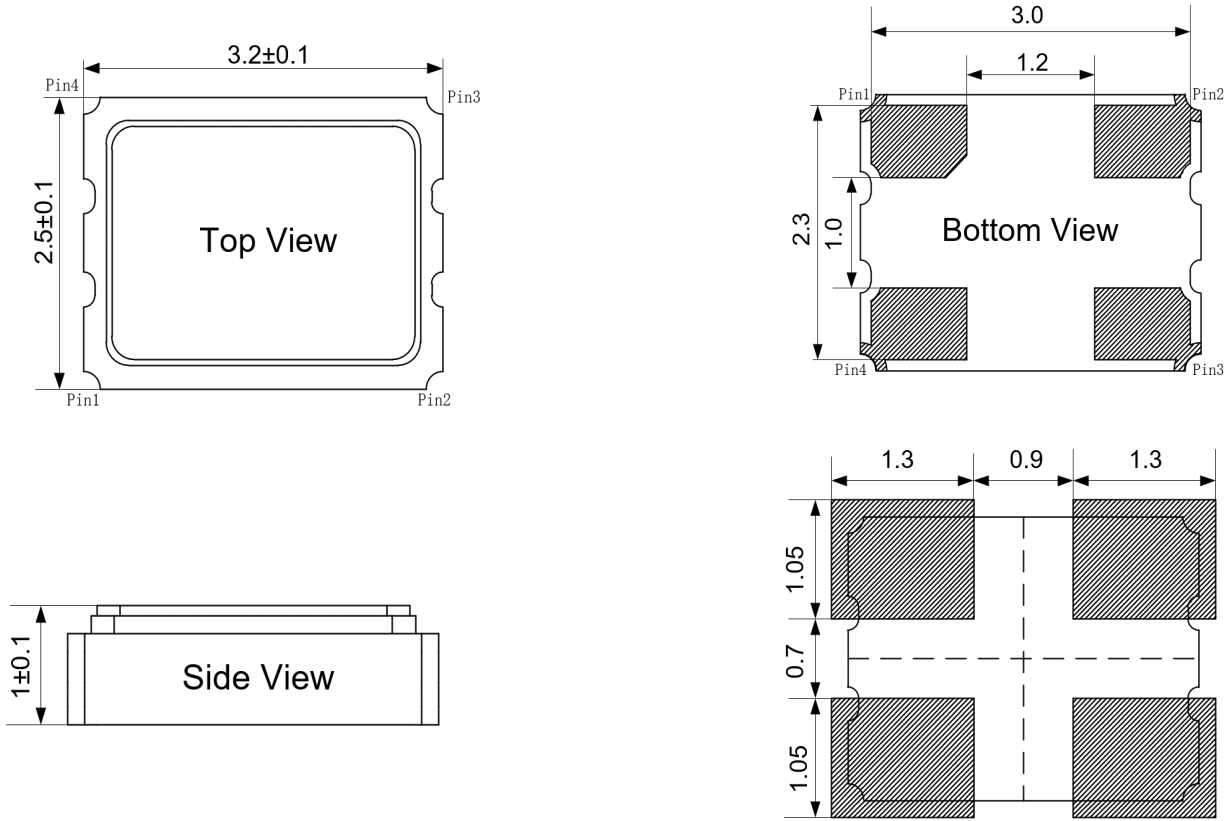
#### 6.Recommended Reflow Profile



Reflow Profile		
Temperature MIN Preheat	$T_{SMIN}$	150°C
Temperature MAX Preheat	$T_{SMAX}$	200°C
Time ( $T_{SMIN}$ - $T_{SMAX}$ )	$t_s$	60-180sec
Temperature	$T_L$	217°C
Peak Temperature	$T_P$	260°C
Ramp-up Rate	$R_{UP}$	3°C/sec max
Ramp-Down Rate	$R_{DOWN}$	6°C/sec max
Time within 5°C of Peak Temperature	$t_p$	10sec
Time $t(25^\circ\text{C})$ to Peak Temperature	$t(25^\circ\text{C})$ to Peak	480sec
Time	$t_L$	60-150sec

## 7.Product Dimensions

Unit: mm



Recommend Soldering Pattern

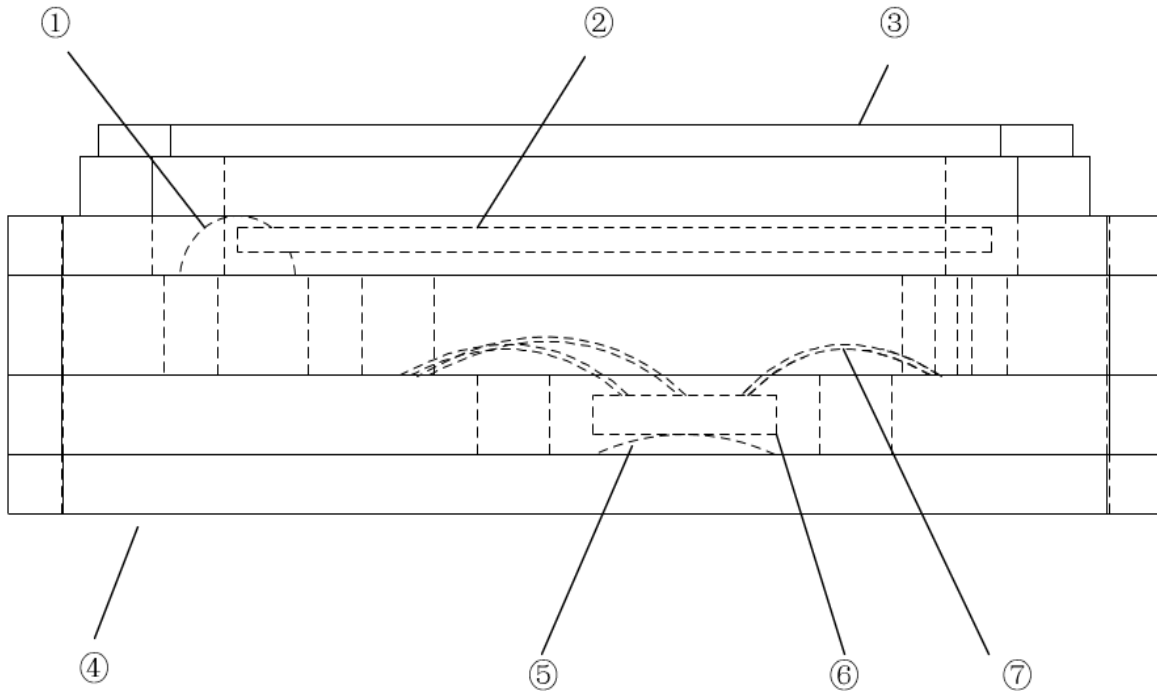
### Pin Connection

Name	Connection
pin 1	Tri-State
pin 2	GND
pin 3	Fout
pin 4	Vdd

### Function

Pin1 Input	Pin3 Output
High level	Oscillation Out
Open	
Low level	High Z

### 8. Structure illustration



No.	Components	Materials
①	Conductive Adhesive	Ag+Silicone resin
②	Crystal Blank	SiO <sub>2</sub>
③	Lid	Fe-Ni-Co Alloy
④	Base	Ceramic+Noble Metal
⑤	Conductive Adhesive of Solid IC	Ag+Silicone resin
⑥	IC	Si
⑦	Gold wire	Au



**9.Product Identification (Marking)**

T: TKD Logo	
O: Oscillator Code	
32k: Frequency Code	
●: Pin1 Index	
D: Date Code	
#####: XO Lot Code	

Date Code

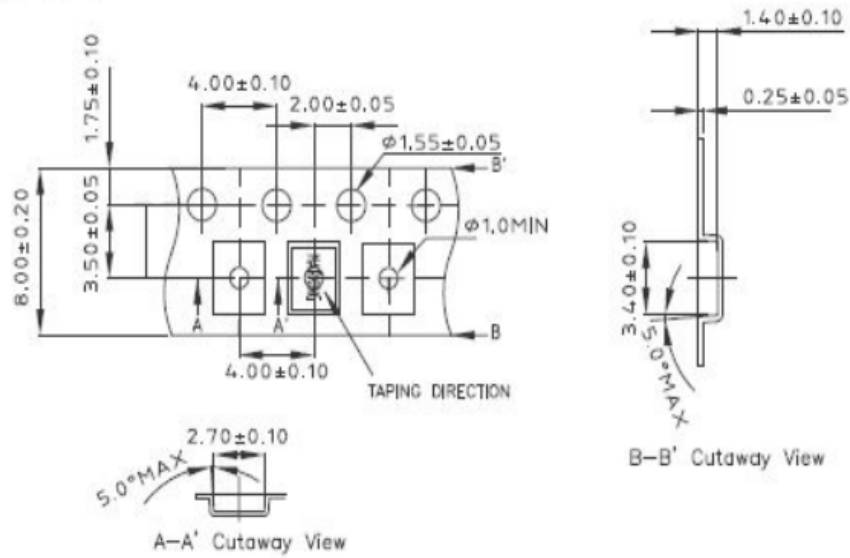
Year		2019	2020	2021	2022		
				2023	2024	2025	2026
				2027	2028	2029	2030
				2031	2032	2033	2034
Month	JAN	a	n	A	N		
	FEB	b	p	B	P		
	MAR	c	q	C	Q		
	APR	d	r	D	R		
	MAY	e	s	E	S		
	JUN	f	t	F	T		
	JUL	g	u	G	U		
	AUG	h	v	H	V		
	SEP	j	w	J	W		
	OCT	k	x	K	X		
	NOV	l	y	L	Y		
	DEC	m	z	M	Z		

This date code will be cycled every four years.

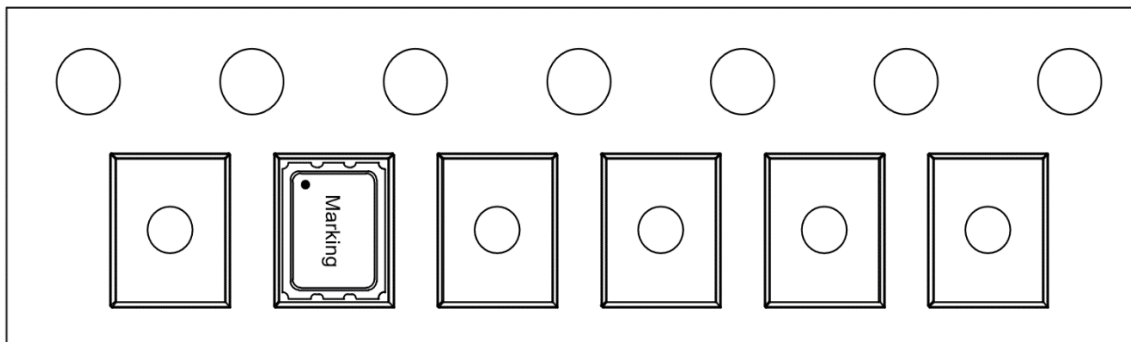
### 10.Package Information

Tape (Carrier) Dimensions

Unit: mm

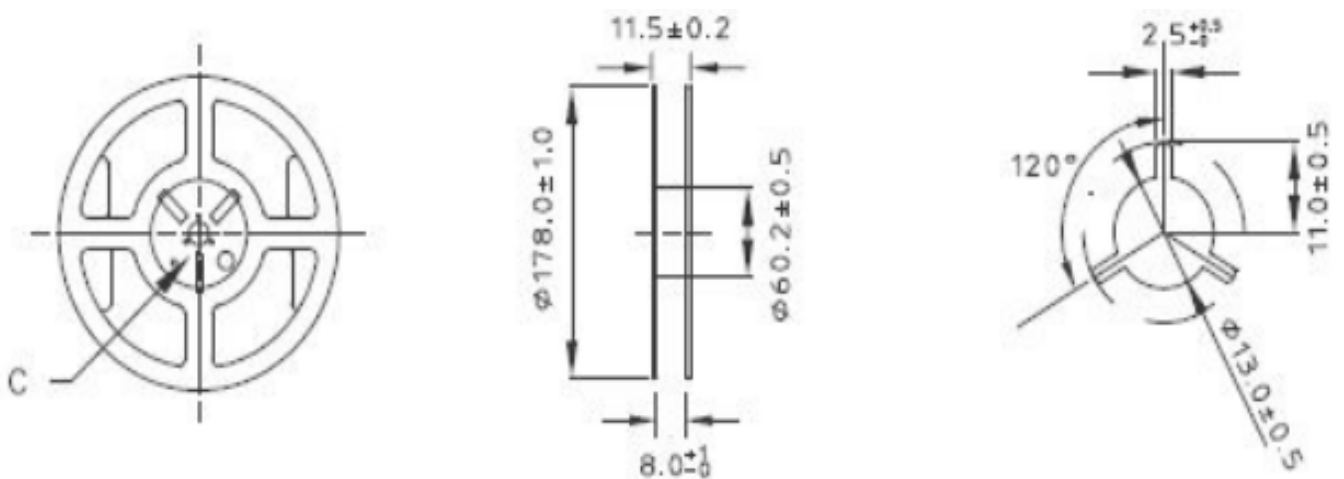


The Direction of Packing



Reel Dimensions

Unit: mm







---

## Handling Instructions

### 1. Cautions for Handling

a) Prevention against electrostatic breakdown

Your full attention to static electricity is still requested.

b) Direction

Before mounting the crystal oscillator on board, Please confirm the direction to make sure the GND terminal and the terminal of power supply are not taken wrongly.

### 2. Prevention against Vibration and Shock

While the product is being transported or mounted onto board, if undue hock and vibration exceeding the specification is put on, there is risk hat the built-in crystal blank is broken.

When undue shock and vibration exceeding the specification is put on the product, please be sure to make confirmation of the product's characteristics.

### 3. Soldering

In order to assure the reliability of the crystal oscillator, please use the product under the recommended conditions.

### 4. Surface mounting

a) This product is surface-mounting device.

So, Please pay attention to the following things.

b) Extreme deformation of board may make pattern off, the electrode of terminals off and solder broken. Full attention is requested especially when splitting the board with the oscillator mounted where the camber of the board occurs.

c) In case that automatic mounter is used, please choose the type with small shock generation and make confirmation of the shock before use.

### 5. Cleaning

Because cleaning will cause change to all characteristics, cleaning is forbidden.

### 6. Store keeping (method and duration)

Long-time storage in the high/low temperature and high humidity leads to deterioration of solderability. So, please keep the product in the temperature of +5~+35 and humidity of 45~70%.

Moreover, please keep the product in the circumstance with measures against static electricity.

Please use it within 168 hours after the pack is opened.

(Please keep it with desiccator etc. when you exceed 168 hours after the bag is opened. Please use it after confirming the product solderability.)

## X-ON Electronics

Largest Supplier of Electrical and Electronic Components

*Click to view similar products for [Standard Clock Oscillators](#) category:*

*Click to view products by [TKD](#) manufacturer:*

Other Similar products are found below :

[601252](#) [F335-25](#) [F535L-33.333](#) [F535L-50](#) [NBXHBA019LN1TAG](#) [SiT1602BI-22-33E-50.000000E](#) [SIT8918AA-11-33S-50.000000G](#)  
[SM4420TEV-40.0M-T1K](#) [F335-24](#) [F335-40](#) [F535L-10](#) [F535L-12](#) [F535L-24](#) [F535L-27](#) [PE7744DW-100.0M](#) [ASF1-3.686MHZ-N-K-S](#) [ASV-](#)  
[4.000MHZ-LCS-T](#) [XO57CTECNA3M6864](#) [601251](#) [SiT8503AI-18-33E-0.200000X](#) [SIT9122AI2C233E300.000000X](#) [9120AC-2D2-](#)  
[33E212.500000](#) [9102AI-243N25E100.000000](#) [8208AC-82-18E-25.000000](#) [8008AI-72-XXE-24.545454E](#) [8004AC-13-33E-133.330000X](#) [AS-](#)  
[4.9152-16-SMD-TR](#) [ASFL1-48.000MHZ-LC-T](#) [632L3I004M000000](#) [SIT8920AM-31-33E-25.000000](#) [DSC1028DI2-019.2000](#) [9121AC-2C3-](#)  
[25E100.000000](#) [9102AI-233N33E100.000000X](#) [9102AI-233N25E200.000000](#) [9102AI-232H25S125.000000](#) [9102AI-133N25E200.000000](#) [9102AC-](#)  
[283N25E200.000000](#) [9001AC-33-33E1-30.000000](#) [8103AC-13-33E-12.000000X](#) [3921AI-2CF-33NZ125.000000](#) [5730-1SF](#) [XUN736000.032768I](#)  
[ASV-25.000MHZ-ECS-50-T](#) [EC3925ETTTS-100.000M TR](#) [SIT1602BC-83-33E-10.000000Y](#) [8003AI-12-33S-40.000000Y](#) [1602BI-13-33S-](#)  
[19.200000E](#) [8208AI-2F-18E-25.000000X](#) [8103AI-83-33E-33.000000X](#) [8208AI-8F-33E-66.666666X](#)