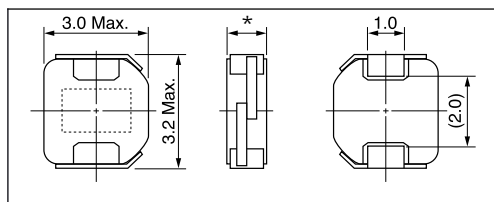
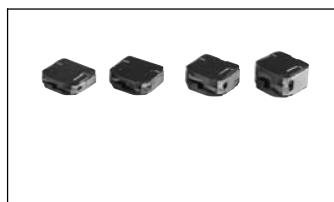


DE2810C/DE2812C/DE2815C/DE2818C

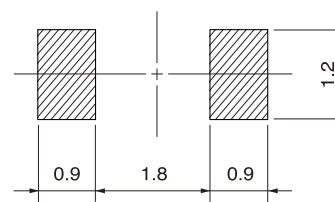
Inductance Range 电感值范围 : 1.2~12μH (DB2810C), 0.56~12μH (DB2812C), 0.47~12μH (DB2815C) 0.47~12μH (DE2818C)

DIMENSIONS / 尺寸



*DE2810C: 1.0mm Max.
 DE2812C: 1.2mm Max.
 DE2815C: 1.5mm Max.
 DE2818C: 1.8mm Max.

Recommended patterns 推荐焊盘尺寸



(Unit: mm)/(单位: 毫米)

FEATURES / 特点

- Low profile (2.8 × 3.0mm square, 1.0/1.2/1.5/1.8mm Max.height).
- Magnetically shielded construction and low DC resistance.
- Ideal for a variety of DC-DC converter inductor applications.(DVC,DSC,Cellular phone,PDA)
- RoHS compliant
- 薄型构造 (最大2.8毫米×3.0毫米的平面, 最大高度1.0/1.2/1.5/1.8毫米)。
- 磁性屏蔽结构和低直流电阻。
- 是适用于多种DC-DC转换器电感器的理想选择。(DVC, DSC, 手机, PDA)
- 符合RoHS指令。

SELECTION GUIDE FOR STANDARD COILS / 标准线圈选择指南

TYPE DE2810C (Magnetically Shielded) / DE2810C型(磁性屏蔽) (每卷数量; 2,000 PCS)

东光零件号码	电感值 ⁽¹⁾	公差	最大直流电阻 ⁽²⁾ (典型)	最大电感减小电流 ⁽³⁾ (典型)	最大温度上升电流 ⁽³⁾ (典型)
TOKO Part Number	Inductance ⁽¹⁾ (μH)	Tolerance (%)	DC Resistance ⁽²⁾ (mΩ) Max. (Typ.)	Inductance Decrease Current ⁽³⁾ (A) Max. (Typ.) $\frac{\Delta L}{L} = 30\%$	Temperature Rise Current ⁽³⁾ ΔT=40°C (A) Max. (Typ.)
1117AS-R56N	0.56	± 30	42 (35)	1.80 (2.40)	2.30 (2.70)
1117AS-1R2N	1.2	± 30	66 (55)	1.25 (1.70)	1.80 (2.10)
1117AS-1R5N	1.5	± 30	72 (60)	1.10 (1.50)	1.70 (2.00)
1117AS-2R2M	2.2	± 20	102 (85)	0.96 (1.30)	1.40 (1.60)
1117AS-2R7M	2.7	± 20	114 (95)	0.87 (1.15)	1.30 (1.50)
1117AS-3R3M	3.3	± 20	156 (130)	0.80 (1.05)	1.10 (1.30)
1117AS-4R7M	4.7	± 20	216 (180)	0.64 (0.86)	0.92 (1.10)
1117AS-6R8M	6.8	± 20	300 (250)	0.54 (0.73)	0.76 (0.90)
1117AS-100M	10.0	± 20	456 (380)	0.45 (0.60)	0.60 (0.71)
1117AS-120M	12.0	± 20	540 (450)	0.40 (0.54)	0.55 (0.65)

TYPE DE2812C (Magnetically Shielded) / DE2812C型(磁性屏蔽) (每卷数量; 2,000 PCS)

东光零件号码	电感值 ⁽¹⁾	公差	最大直流电阻 ⁽²⁾ (典型)	最大电感减小电流 ⁽³⁾ (典型)	最大温度上升电流 ⁽³⁾ (典型)
TOKO Part Number	Inductance ⁽¹⁾ (μH)	Tolerance (%)	DC Resistance ⁽²⁾ (mΩ) Max. (Typ.)	Inductance Decrease Current ⁽³⁾ (A) Max. (Typ.) $\frac{\Delta L}{L} = 30\%$	Temperature Rise Current ⁽³⁾ ΔT=40°C (A) Max. (Typ.)
1098AS-R56N	0.56	± 30	39 (32)	2.30 (3.00)	3.00 (3.70)
1098AS-1R2N	1.2	± 30	53 (44)	1.80 (2.40)	2.40 (2.90)
1098AS-1R5N	1.5	± 30	60 (50)	1.50 (2.10)	2.20 (2.60)
1098AS-2R0M	2.0	± 20	81 (67)	1.40 (1.80)	1.90 (2.30)
1098AS-2R2M	2.2	± 20	81 (67)	1.20 (1.60)	1.90 (2.30)
1098AS-2R7M	2.7	± 20	87 (72)	1.20 (1.60)	1.80 (2.20)
1098AS-3R3M	3.3	± 20	120 (100)	1.00 (1.40)	1.50 (1.70)
1098AS-4R7M	4.7	± 20	155 (130)	0.88 (1.20)	1.30 (1.50)
1098AS-6R8M	6.8	± 20	240 (200)	0.72 (0.96)	0.98 (1.10)
1098AS-100M	10.0	± 20	350 (290)	0.58 (0.77)	0.78 (0.92)
1098AS-120M	12.0	± 20	410 (340)	0.55 (0.73)	0.70 (0.82)

continued on next page
 接下页

continued from previous page
接上页

SELECTION GUIDE FOR STANDARD COILS / 标准线圈选择指南

TYPE DE2815C (Magnetically Shielded) / DE2815C型 (磁性屏蔽) (每卷数量; 2,000 PCS)

東東光零件号码	电感值 ⁽¹⁾	公差	最大直流电阻 ⁽²⁾ (典型)	最大电感减小电流 ⁽³⁾ (典型)	最大温度上升电流 ⁽³⁾ (典型)
TOKO Part Number	Inductance ⁽¹⁾ (μH)	Tolerance (%)	DC Resistance ⁽²⁾ (mΩ) Max. (Typ.)	Inductance Decrease Current ⁽³⁾ (A) Max. (Typ.) $\frac{\Delta L}{L} = 30\%$	Temperature Rise Current ⁽³⁾ ΔT=40°C (A) Max. (Typ.)
1071AS-R47N	0.47	± 30	30 (25)	2.90 (3.80)	3.50 (4.20)
1071AS-1R0N	1.0	± 30	40 (33)	2.10 (2.70)	2.80 (3.30)
1071AS-1R5N	1.5	± 30	44 (37)	1.70 (2.30)	2.50 (3.00)
1071AS-2R2M	2.2	± 20	60 (50)	1.40 (1.80)	2.00 (2.40)
1071AS-2R7M	2.7	± 20	78 (65)	1.20 (1.60)	1.80 (2.10)
1071AS-3R3M	3.3	± 20	84 (70)	1.10 (1.50)	1.70 (2.00)
1071AS-4R7M	4.7	± 20	120 (100)	0.95 (1.30)	1.40 (1.70)
1071AS-6R8M	6.8	± 20	180 (150)	0.80 (1.00)	1.10 (1.30)
1071AS-100M	10.0	± 20	252 (210)	0.65 (0.90)	0.95 (1.10)
1071AS-120M	12.0	± 20	288 (240)	0.60 (0.80)	0.85 (1.00)

TYPE DE2818C (Magnetically Shielded) / DE2818C型 (磁性屏蔽) (每卷数量; 2,000 PCS)

東東光零件号码	电感值 ⁽¹⁾	公差	最大直流电阻 ⁽²⁾ (典型)	最大电感减小电流 ⁽³⁾ (典型)	最大温度上升电流 ⁽³⁾ (典型)
TOKO Part Number	Inductance ⁽¹⁾ (μH)	Tolerance (%)	DC Resistance ⁽²⁾ (mΩ) Max. (Typ.)	Inductance Decrease Current ⁽³⁾ (A) Max. (Typ.) $\frac{\Delta L}{L} = 30\%$	Temperature Rise Current ⁽³⁾ ΔT=40°C (A) Max. (Typ.)
1072AS-R47N	0.47	± 30	22 (18)	2.75 (3.65)	4.40 (5.20)
1072AS-1R0N	1.0	± 30	30 (25)	1.95 (2.60)	3.50 (4.20)
1072AS-1R5N	1.5	± 30	34 (28)	1.65 (2.20)	3.10 (3.70)
1072AS-1R8N	1.8	± 30	42 (35)	1.50 (2.00)	2.80 (3.30)
1072AS-2R2M	2.2	± 20	47 (39)	1.35 (1.80)	2.60 (3.00)
1072AS-2R7M	2.7	± 20	58 (48)	1.20 (1.60)	2.20 (2.60)
1072AS-3R3M	3.3	± 20	64 (53)	1.10 (1.45)	2.10 (2.50)
1072AS-4R7M	4.7	± 20	87 (72)	0.95 (1.25)	1.80 (2.10)
1072AS-6R8M	6.8	± 20	138 (115)	0.78 (1.05)	1.35 (1.60)
1072AS-100M	10.0	± 20	174 (145)	0.65 (0.86)	1.20 (1.40)
1072AS-120M	12.0	± 20	228 (190)	0.60 (0.80)	1.00 (1.20)

(1) Inductance is measured with a LCR meter 4284A* or equivalent.
Test frequency at 100kHz

(2) DC Resistance is measured with a Digital Multimeter TR6871 (ADVANTEST) or equivalent.

(3) Maximum allowable DC current is that which causes a 30% inductance reduction from the initial value, coil temperature to rise by 40°C whichever is smaller.
(Reference ambient temperature 20°C)

(1) LCR仪表4284A *或者功能相同的仪器在100kHz下测试电感值。

(2) 通过数码万用表TR6871 (Advantest) 或者相类似的工具测试直流电阻。

(3) 允许最大直流电的范围是以下两者中比较小的一个：引起电感值从最初值降低30%，或者线圈温度升高40°C。
(参考周围环境温度20°C)。

* Agilent技术

* Agilent Technologies

X-ON Electronics

Largest Supplier of Electrical and Electronic Components

Click to view similar products for [Fixed Inductors](#) category:

Click to view products by [Toko](#) manufacturer:

Other Similar products are found below :

[MLZ1608M6R8WTD25](#) [MLZ1608N6R8LT000](#) [MLZ1608N3R3LTD25](#) [MLZ1608N3R3LT000](#) [MLZ1608N150LT000](#)

[MLZ1608M150WTD25](#) [MLZ1608M3R3WTD25](#) [MLZ1608M3R3WT000](#) [MLZ1608M150WT000](#) [MLZ1608A1R5WT000](#)

[MLZ1608N1R5LT000](#) [B82432C1333K000](#) [PCMB053T-1R0MS](#) [PCMB053T-1R5MS](#) [PCMB104T-1R5MS](#) [CR32NP-100KC](#) [CR32NP-](#)

[151KC](#) [CR32NP-180KC](#) [CR32NP-181KC](#) [CR32NP-1R5MC](#) [CR32NP-390KC](#) [CR32NP-3R9MC](#) [CR32NP-680KC](#) [CR32NP-820KC](#)

[CR32NP-8R2MC](#) [CR43NP-390KC](#) [CR43NP-560KC](#) [CR43NP-680KC](#) [CR54NP-181KC](#) [CR54NP-470LC](#) [CR54NP-820KC](#) [CR54NP-8R5MC](#)

[MGDQ4-00004-P](#) [MGDU1-00016-P](#) [MHL1ECTTP18NJ](#) [MHL1JCTTD12NJ](#) [PE-51506NL](#) [PE-53601NL](#) [PE-53630NL](#) [PE-53824SNLT](#) [PE-](#)

[62892NL](#) [PE-92100NL](#) [PG0434.801NLT](#) [PG0936.113NLT](#) [PM06-2N7](#) [PM06-39NJ](#) [HC2LP-R47-R](#) [HC2-R47-R](#) [HC3-2R2-R](#) [HC8-1R2-R](#)