

REV	CONTENT	CHK	DATE
V0.0	CONTENT	YL	22.11.21

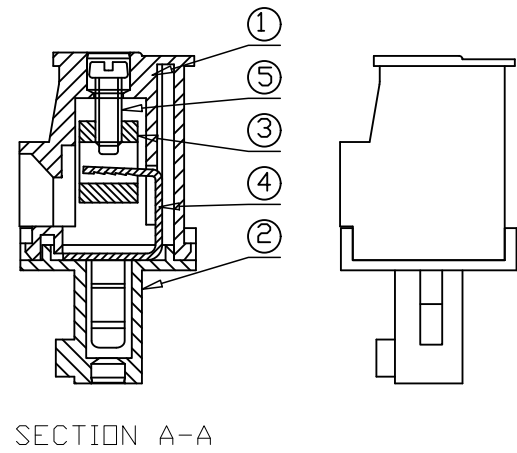
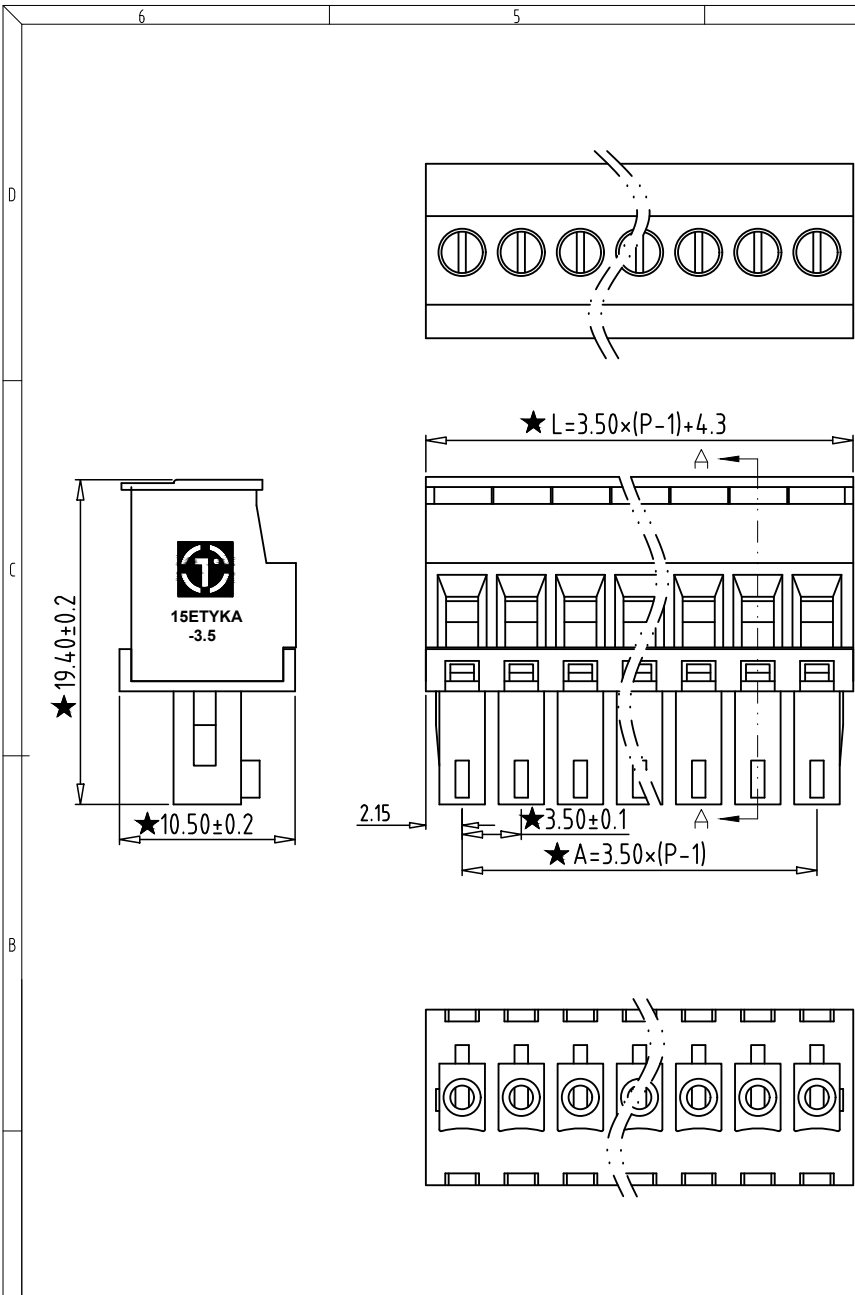
**Electrical :**

- |   |                |                        |
|---|----------------|------------------------|
|   | UL             | IEC                    |
| 1. Rated Voltage :                      | 300V           | 250V                   |
| 2. Rated Current :                      | 8A             | 7A                     |
| 3. Torque Value :                       | M2 , 1.77Lb.in | M2 , 0.2N.m            |
| 4. Wire Range:                          | 28-16AWG       | 0.5-1.5mm <sup>2</sup> |
| 5. Stripping Length :                   | 6-7mm          |                        |
| 6. Withstanding Voltage :               | AC1600V/1Min.  |                        |
| 7. Operating Temperature :              | -40°C~+105°C   |                        |
| 8. RoHS Compliance                      |                |                        |
| 9. "★" is the key quality control point |                |                        |

15ETYKA - 3.5 - XXP - X X - 03

① ② ③ ④ ⑤ ⑥

- ① Series No.
- ② Pitch
- ③ Poles  
02 02Contacts  
03 03Contacts  
...  
24 24Contacts
- ④ 1 Single Pitch  
2 Double Pitch
- ⑤ Color: 1 Grey  
2 Blue  
3 Black  
4 Green  
5 Orange  
6 Red  
7 Transparent  
8 Yellow  
9 White
- ⑥ Customer Request : 03--Stainless steel screws



Total Pitch Tolerances in mm										Nominal dimension range in mm										⊥	=	-	//					
over 0	over 30	over 53	over 70	over 90	over 115	over 150	over 250	over 350	over 500	over 0	over 30	over 53	over 70	over 90	over 115	over 150	over 200	over 250	over 320	over 0	over 100	over 150	10	all	to	to	to	150
to 30	to 53	to 70	to 90	to 115	to 150	to 250	to 350	to 500	to 500	to 30	to 53	to 70	to 90	to 115	to 150	to 200	to 250	to 320	to 10	to 100	to 150	to 150						
±0.18	±0.20	±0.25	±0.3	±0.35	±0.44	±0.60	±0.70	±0.85	±0.20	±0.25	±0.30	±0.35	±0.44	±0.55	±0.70	±0.80	±0.90	0.2	0.3	0.3	0.2	0.3	0.3	0.3	0.2	0.3	0.5	

5	SCREW	XX	P	STEEL	Zn Plated		
4	CLAMP	XX	P	PHOSPHOR BRONZE	Ni Plated		
3	BLOCK	XX	P	BRASS	Ni Plated		
2	COVER	XX	1	PA66(UL94V-0)	SEE NOTE		
1	HOUSING	XX	1	PA66(UL94V-0)	SEE NOTE		
ITEM	NAME OF PART		NO. OF PART	Q'TY	MATERIAL	NOTE	
DWG.	YL	DATE	22.11.21	SIZE	A4	UNITS mm	SHEET/OF 1 / 1
CHK.	DATE			SCALE	1:1		
APP.	DATE						
				NAME	15ETYKA-3.5-XXP-XX-03		
拓宜(上海)工控电器设备有限公司 Topone (Shanghai) Industrial Control Electrical Equipment Co., LTD.				DWGNO.	XXXXX		

## X-ON Electronics

Largest Supplier of Electrical and Electronic Components

*Click to view similar products for [Pluggable Terminal Blocks](#) category:*

*Click to view products by [Toponelec](#) manufacturer:*

Other Similar products are found below :

[57.510.0053](#) [721-104/026-047](#) [721-204/026-045](#) [MC 1.5/ 6-ST-3.5 GY AU](#) [ET02015000J0G](#) [860505](#) [860516](#) [860810](#) [GBPACX-12](#)  
[93.731.4953.0](#) [PVP03-3,50](#) [PVS02-5,00](#) [1-1986160-3](#) [1377680000](#) [1531000000](#) [1546228-5](#) [ELFP03110](#) [ELFP10210](#) [ELFT07250](#)  
[ELVD12100](#) [ELVF09400](#) [ELXH071G0E](#) [1725220000](#) [1760336](#) [1855000000](#) [19346](#) [1946309](#) [1973592](#) [19892](#) [25.320.4053.1](#) [25.320.4553.9](#)  
[25.320.4753.1](#) [25.320.5453.1](#) [25.340.0353.1](#) [25.340.1053.1](#) [25.345.3553.0M001](#) [25.640.3553.1](#) [SH02-5,08](#) [SH06-3,81](#) [SH08-5,08](#) [SH08-](#)  
[5,08-K](#) [SH12-5,08](#) [SHS04-5,00](#) [30.303](#) [30.305](#) [30.306](#) [PHP09-5,08](#) [25.193.0453.0](#) [25.320.4653.1](#) [25.332.2453.1](#)