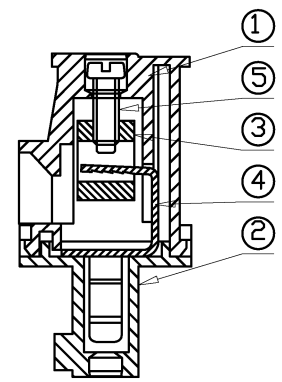
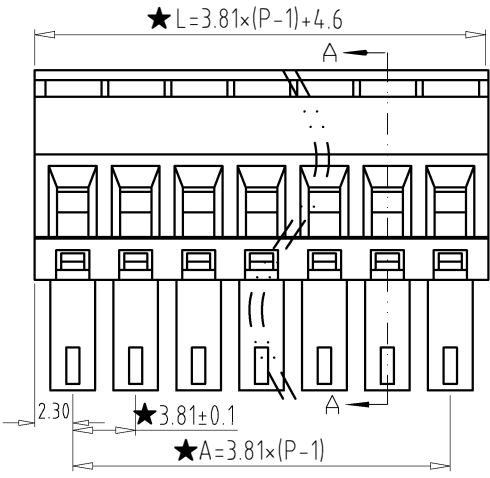
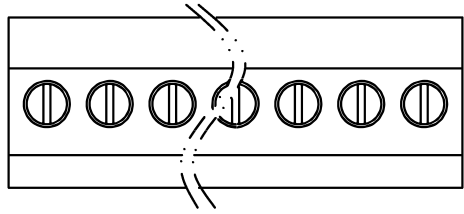


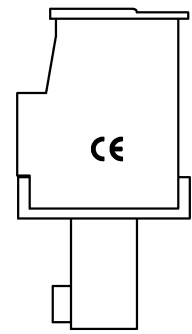
REV	CONTENT	CHK	DATE
V0.0	CONTENT	MYZ	21.07.10

**Electrical :**

- |  |                |                        |
|--|----------------|------------------------|
|  | UL             | IEC                    |
| 1. Rated Voltage :                       | 300V           | 250V                   |
| 2. Rated Current :                       | 8A             | 7A                     |
| 3. Torque Value :                        | M2 , 1.77Lb.in | M2 , 0.2N.m            |
| 4. Wire Range:                           | 28-16AWG       | 0.5-1.5mm <sup>2</sup> |
| 5. Stripping Length :                    | 6-7mm          |                        |
| 6. Withstanding Voltage :                | AC1600V/1Min.  |                        |
| 7. Operating Temperature :               | -40°C~+105°C   |                        |
| 8. RoHS Compliance                       |                |                        |
| 9. Safety Approval :                     |                |                        |
| 10. "★" is the key quality control point |                |                        |

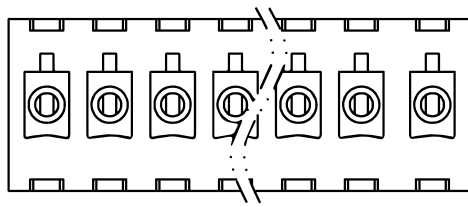
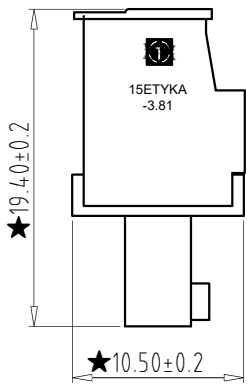


SECTION A-A



15ETYKA - 3.81 - XXP - X X - 00

- |              |         |   |                                    |  |                                   |
|--------------|---------|---|------------------------------------|--|-----------------------------------|
| ①            | ②       | ③   | ④                                  | ⑤  | ⑥                                 |
| ① Series No. | ② Pitch | ③ Poles<br>02 02Contacts<br>03 03Contacts<br>...<br>24 24Contacts | ④ 1 Single Pitch<br>2 Double Pitch | ⑤ Color: 1 Grey<br>2 Blue<br>3 Black<br>4 Green<br>5 Orange<br>6 Red<br>7 Transparent<br>8 Yellow<br>9 White | ⑥ Customer Request : 00--Standard |



Total Pitch Tolerances in mm										Nominal dimension range in mm										⊥	≡	-	//		
over 0	over 30	over 53	over 70	over 90	over 115	over 150	over 250	over 350	over 500	over 0	over 30	over 53	over 70	over 90	over 115	over 150	over 200	over 250	over 320	over 0	over 10	all	over 0	over 100	over 150
±0.18	±0.20	±0.25	±0.3	±0.35	±0.44	±0.60	±0.70	±0.85	±0.20	±0.25	±0.30	±0.35	±0.44	±0.55	±0.70	±0.80	±0.90	0.2	0.3	0.3	0.2	0.3	0.5		

5	SCREW	XX	P	STEEL	Zn Plated
4	CLAMP	XX	P	PHOSPHOR BRONZE	Ni Plated
3	BLOCK	XX	P	BRASS	Ni Plated
2	COVER	XX	1	PA66(UL94V-0)	SEE NOTE
1	HOUSING	XX	1	PA66(UL94V-0)	SEE NOTE
ITEM	NAME OF PART	NO. OF PART	Q'TY	MATERIAL	NOTE
DWG.	MYZ	DATE	21.07.10	SIZE	A4 UNITS mm SHEET/OF 1/1
CHK.		DATE		SCALE	1:1
APP.		DATE			
				NAME	15ETYKA-3.81-XXP-XX-00
				DWGNO.	XXXX

拓宜(上海)工控电器设备有限公司  
Topone(Shanghai) Industrial Control Electrical Equipment Co., LTD.

## X-ON Electronics

Largest Supplier of Electrical and Electronic Components

*Click to view similar products for [Pluggable Terminal Blocks](#) category:*

*Click to view products by [Toponelec](#) manufacturer:*

Other Similar products are found below :

[57.510.0053](#) [721-104/026-047](#) [721-204/026-045](#) [MC 1.5/ 6-ST-3.5 GY AU](#) [ET02015000J0G](#) [860505](#) [860516](#) [860810](#) [GBPACX-12](#)  
[93.731.4953.0](#) [PVP03-3,50](#) [PVS02-5,00](#) [1-1986160-3](#) [1377680000](#) [1531000000](#) [1546228-5](#) [ELFP03110](#) [ELFP10210](#) [ELFT07250](#)  
[ELVD12100](#) [ELVF09400](#) [ELXH071G0E](#) [1725220000](#) [1760336](#) [1855000000](#) [19346](#) [1946309](#) [1973592](#) [19892](#) [25.320.4053.1](#) [25.320.4553.9](#)  
[25.320.4753.1](#) [25.320.5453.1](#) [25.340.0353.1](#) [25.340.1053.1](#) [25.345.3553.0M001](#) [25.640.3553.1](#) [SH02-5,08](#) [SH06-3,81](#) [SH08-5,08](#) [SH08-](#)  
[5,08-K](#) [SH12-5,08](#) [SHS04-5,00](#) [30.303](#) [30.305](#) [30.306](#) [PHP09-5,08](#) [25.193.0453.0](#) [25.320.4653.1](#) [25.332.2453.1](#)